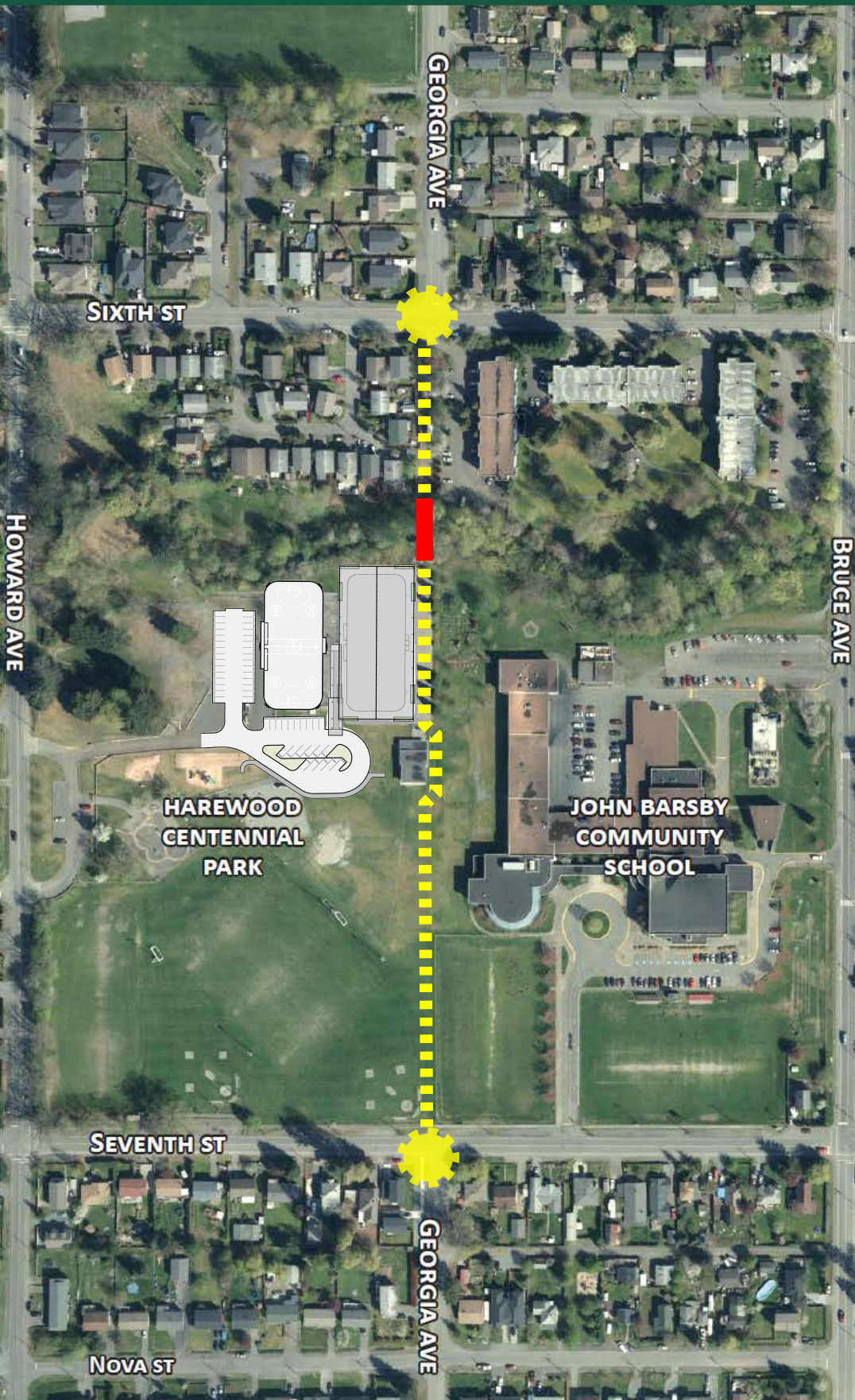


THE GEORGIA GREENWAY



... FOR ALL AGES AND ABILITIES!



Phase 1 of the Georgia Greenway project includes:

- A 4 metre wide multi-use asphalt trail connecting Sixth Street and Seventh Street
- A 4 metre wide pedestrian and cycling bridge over the Chase River
- New LED lighting along multi use trail and bridge
- Safety enhancements at the intersection crossings of both Georgia Avenue and Sixth Street; and Georgia Avenue and Seventh Street

Map Legend:

■■■■■ New multi use path

■■■■■ New Bridge



Intersection Crossing Improvements

