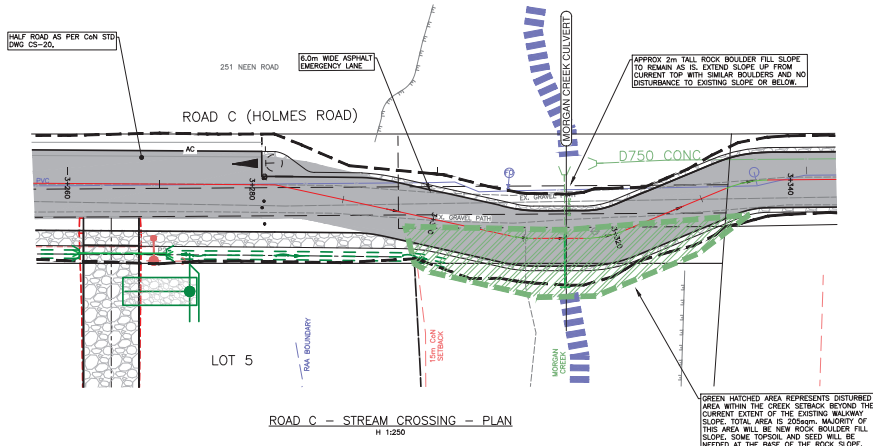
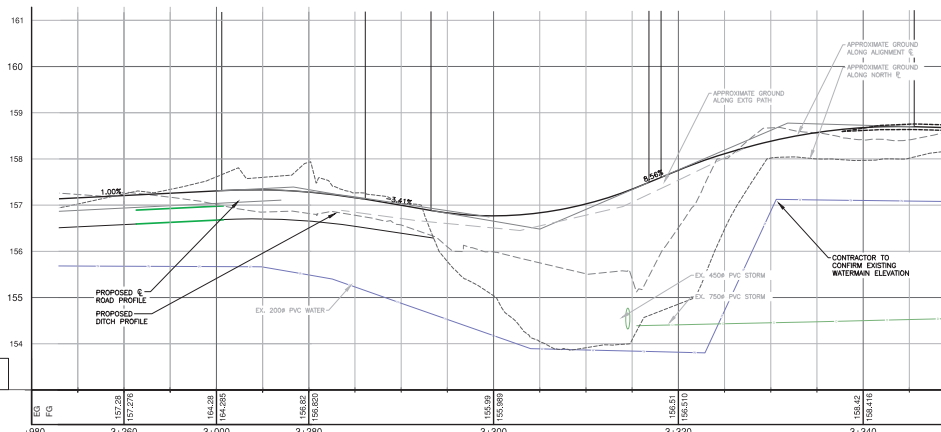


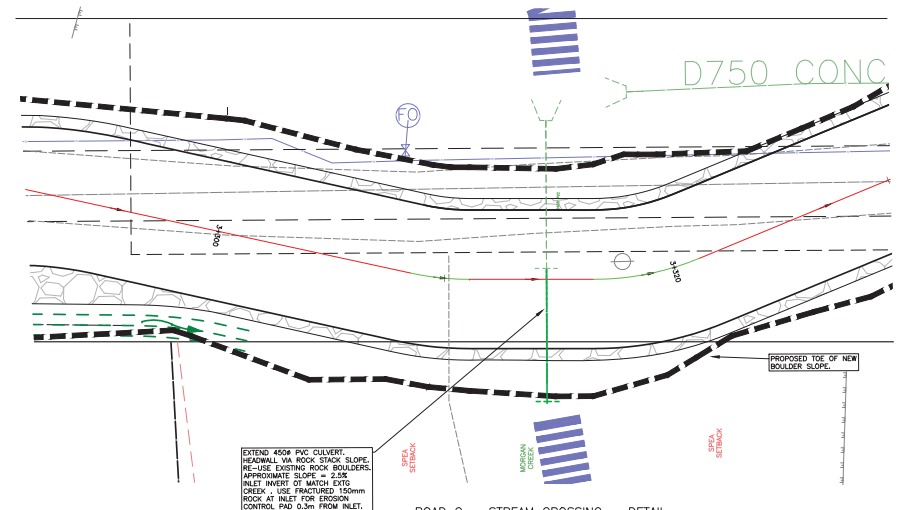
# ATTACHMENT D CREEK CROSSING AND RESTORATION PLAN



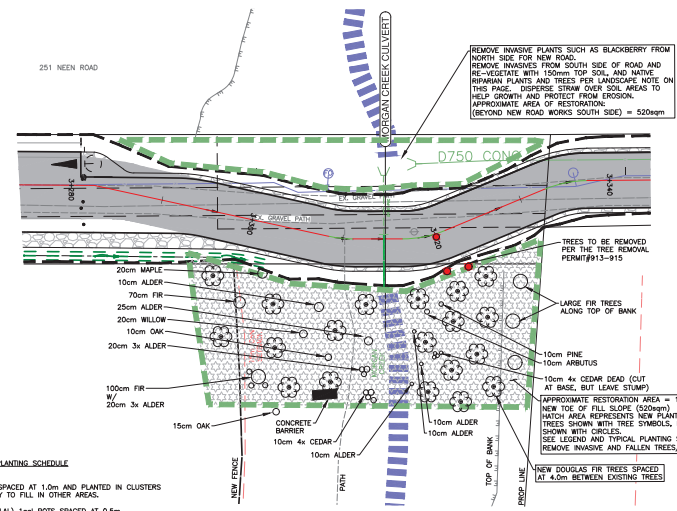
ROAD C - STREAM CROSSING - PLAN  
H 1:250



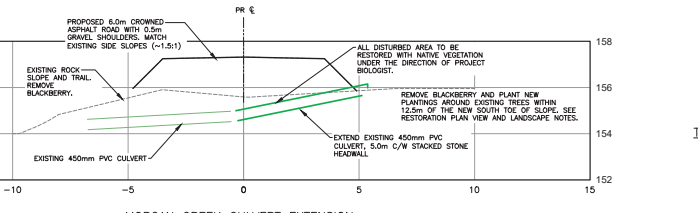
ROAD C - STREAM CROSSING - PROFILE  
H 1:250  
V 1:50



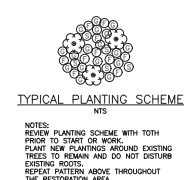
ROAD C - STREAM CROSSING - DETAIL  
H 1:100



ROAD C - STREAM RESTORATION - PLAN  
H 1:250



MORGAN CREEK CULVERT EXTENSION  
1:100



TYPICAL PLANTING SCHEME  
NTS

REPAIR AREA RESTORATION PLANTING SCHEDULE (SOUTH SIDE OF NEW ROAD):  
 ○ 300 SHROB FERN 1pt POT SPACED AT 1.0m AND PLANTED IN CLUSTERS WITH SALAL AND SALMONBERRY TO FALL IN OTHER AREAS.  
 ○ 500 GAULTHERIA SHALLOON (SALAL) 1pt POT SPACED AT 0.5m.  
 ○ 200 SALMONBERRY 1pt POT SPACED AT 1.5m.  
 ○ 30 DOUGLAS FIR TREES 2pt SPACED AT 4.0m.  
 NEW PLANTINGS TO BE PLACED AROUND EXISTING TREES AND UNDER THE DIRECTION OF THE PROJECT BIOLOGIST, TDH AND ASSOC. EXACT FINAL NUMBER OF PLANTINGS TO BE DETERMINED ONSITE BASED ON AVAILABLE SPACE AND BEST PRACTICE, VIA PROJECT BIOLOGIST AND CITY INPUT.  
 ALL PLANTS AND PLANTING TO BE IN ACCORDANCE WITH THE PROVISIONS OF THE CURRENT EDITION OF THE CANADIAN LANDSCAPE SPECIFICATIONS AS WELL AS SECTION 14 OF THE CoM MOES.  
 ALL EXISTING TREES SHOWN ON PLAN TO REMAIN.

NOTES:  
 1. THE LOCATION AND ELEVATION OF SERVICES SHOWN IS APPROXIMATE ONLY. CONTRACTOR TO CONFIRM LOCATION AND ELEVATIONS PRIOR TO START OF WORK.  
 2. ALL ELEVATIONS, WATERCOURSES, AND LEGAL BOUNDARIES SUBJECT TO CONFIRMATION.  
 3. AC DENOTES 100mm ASPHALT CURB.

LEGAL DESCRIPTION	THE EAST 60 ACRES OF SECTION 11, RANGE 5, MOUNTAIN DISTRICT, EXCEPT PART IN PLAN 213 RW
PROJECT DATUM	ELEVATIONS ARE DERIVED FROM CoN LIDAR

ISSUED		NO.		DESCRIPTION		YYYY MM DD		DE		DA		CK	
2	ISSUED FOR DPA1 APPLICATION												
1	ISSUED FOR DPA1 APPLICATION												

LEGEND	
CLEANOUT	□
CATCHBASIN	□
U/G WIRING	—
GAS	—
WATER	—
SEWER	—
DRAIN	—
DITCH	—
METER	○
FLESH VALVE	○
VALVE	○
REDUCER	○
HYDRANT	○
AIR VALVE	○

**J.E. ANDERSON & ASSOCIATES**  
SURVEYORS - ENGINEERS  
VICTORIA NANAIMO PARKSVILLE CAMPBELL RIVER  
#1A-3411 SHENTON ROAD, NANAIMO, BC V9T 2H1  
PHONE: 250-758-4831 EMAIL: rna@jeanderson.com WEB: www.jeanderson.com

JURISDICTION  
CITY OF NANAIMO  
ENGINEERS SEAL

MUN. FILE SUB01468	CLIENT	1299144 B.C. LTD.
	PROJECT	11-Lot SUBDIVISION 270 NEEN ROAD CREEK CROSSING SHEET PLAN AND PROFILE
		90190 01 SK1
	MUN. DWG NUM	---
		SHEET 1 OF 1