

Initial Audits and Follow-Up

Three initial facilities were first audited in 2023. From those audits a list of recommendations were provided and implemented over the next two years. An auditor from the Rick Hansen Foundation then did a second audit in 2025 to gauge how much each facility had improved.

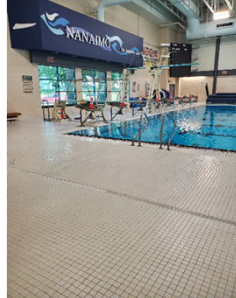
Each of these facilities will receive a plaque from the Rick Hansen Foundation confirming that they are accessibility certified. This will also be recorded on the foundations website as accessible facilities.

Facility	1st Audit	2 nd Audit
Frank Crane Arena	66.5%	74%
Nanaimo Aquatic Center	65.5%	77%
Bowen Park	66%	68%

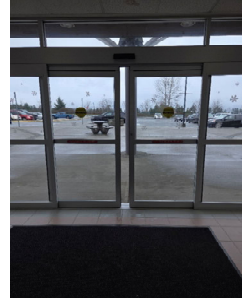
Notable Recent Projects



Automatic door openers at Frank Crane Arena



Anti-slip treatment on all surfaces at Nanaimo Aquatic Center



Sliding front entrance at Beban Pool

Parks, Recreation & Culture

Assessments to Date

Completed

- Oliver Woods Community Center (Indoor and outdoor)
- Beban Pool ★
- Nanaimo Aquatic Center ★
- Bowen Complex ★
- Frank Crane Arena
- Nanaimo Ice Center
- Kin Pool

★ Plaques ordered for public display.

In Progress

- Serauxmen Stadium
- Westwood Lake Beach and Washrooms
- Waterfront Walkway (Maffeo Sutton Park)

Parks, Recreation & Culture

Future Facility Assessments

Cliff McNabb Arena
 Nanaimo Museum
 Military Museum
 Port Theatre
 Rotary Field House
 Kin Hut
 Centennial Building

Beban House
 Art Gallery
 Visitor Center
 Animal Shelter
 City Hall/ Services and
 Resource Center



Recently Audited Facilities

The following two facilities were audited and successfully certified in 2025.

The audits include areas that are done as well as a list of recommendations for consideration.


From that list of recommendations projects will be scheduled for completion. Once the recommendations have been completed the facility will be re-audited for comparison.

As both facilities have reached the certified level a plaque will be ordered for both for display in each facility.




Facility Ratings & Recommendations

Oliver Woods Community Center **69.6%**

- Add cane-detectable features and color-contrasted markings to the underside of the staircase to eliminate overhead hazards
 - Upgrade wayfinding signage
 - Provide a mirror made of safety glass on the rear wall of the elevator cab
 - Provide a power-operated door at the universal washroom
 - Add colour-contrasted strips on the concrete pillars under the canopy to increase visibility
- 

Facility Recommendations (Long Term)

- Install power-operated doors for all interior doors
 - Ensure all sinks and counters in kitchenettes have sufficient knee clearance
 - Install sound-dampening materials throughout the building
 - Provide an adult change table in the changerooms and universal washrooms
 - Install emergency call systems in washrooms
 - Improve lighting in the outdoor seating areas, playground, and along the trail
- 

Nanaimo Ice Center Rating & Recommendations

Nanaimo Ice Center

69.6%

- Add access aisles for the designated accessible parking spaces
- Upgrade wayfinding signage
- Repair or replace all self-closing mechanisms on doors
- Relocate the toilet flush button in the universal washroom to the transfer side
- Provide vertical grab bars for at least one urinal in each men's washroom



Nanaimo Ice Center Recommendations (Long Term)

- Install power-operated doors for all interior doors
- Widen the office door and washroom doors to at least 860 mm to accommodate individuals using wheeled mobility devices
- Provide a height-adjustable reception desk or multiple desks at different heights
- Install an adult change table in the universal washroom and dressing rooms
- Install visual fire alarms throughout the building



Park Assessment Priorities

- Waterfront Walkway (Maffeo Sutton Park)
- Oliver Woods Grounds
- Westwood Lake Trail System (beach)
- Neck Point Park
- Stadium District
- Harewood Centennial Park
- Beaufort Park
- Bowen Park Grounds Adjacent to the Bowen Complex



Parks, Recreation & Culture

Park Audit Progress

Oliver Woods Grounds — completed with facility audit:

- Improve lighting in the outdoor seating areas, playground, and along the trail

Maffeo Sutton Park – (Waterfront Walkway)

- Underway

Ongoing Auditing



Thank You.



Questions?

Parks, Recreation & Culture