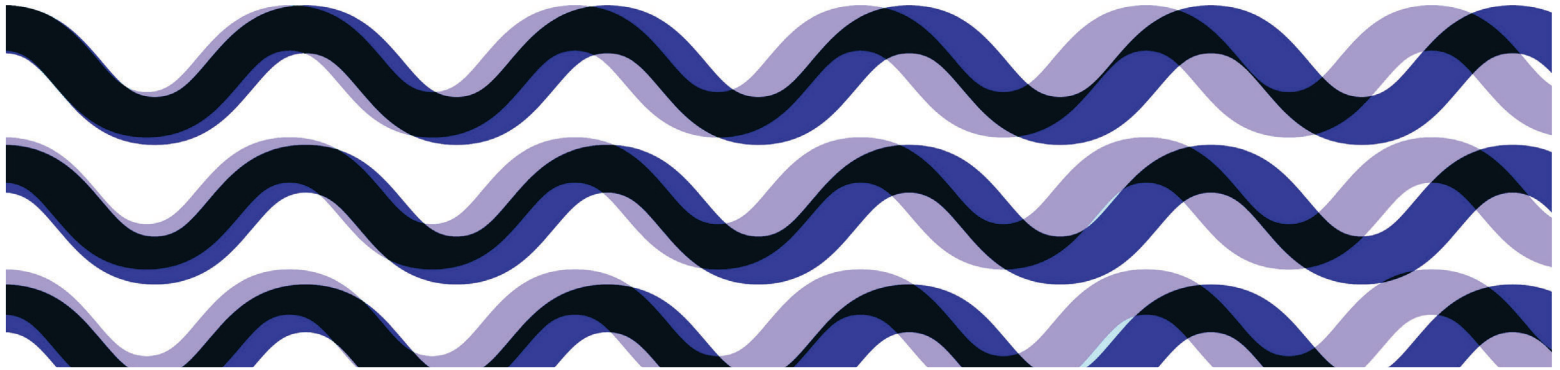




# Vancouver Island University Nanaimo City Council Update



## A moment of structural change in BC

- System-wide sustainability review underway
- Launch November 2025
- Final report due March 2026



# Domestic **Student** trends

## Stable participation, slowing growth

- Students staying closer to home
- Housing and affordability key decisions factors
- Competitive market



# International **Student** trends

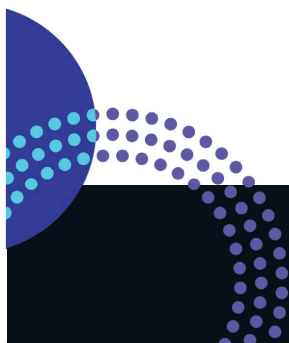
## Federal policy changes reducing volume

- Greater focus on quality and retention



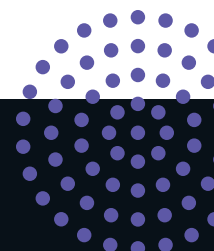
# What this means for Regional Universities

- Stronger Alignment with Work Force Outcomes
- Greater Sensitivity to housing and cost



# What this has meant for Vancouver Island University

- Tough and Painful Decisions
- Program reductions
- Aligning workforce with enrolment reality
- Increased Financial restrictions and oversight



# VIU's strategic Response

- Actively reviewing program viability
- Student accessibility, success, and completion



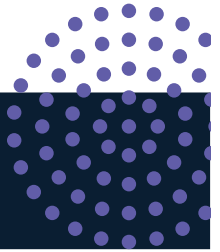
## Student Housing as Enrolment Infrastructure

- New residence expanding capacity to 266+ beds
- Recruitment, retention, and student success
- Critical to Island and rural access



# VIU as an Anchor Institution

- Critical to Nanaimo and Regional workforce Development
- Driver of Economic impact
- Indigenous and community partnership
- Contributor to Nanaimo Accord



## What We are asking of the City

- Support through the difficult transition period
- Alignment on housing for students
- Public confidence in VIU's role



# A Shared Future

- Students are future workforce and citizens
- Partnership is the path forward

