

CITY OF NANAIMO  
THE HARBOUR CITY




**WOODGROVE**  
AREA PLAN

**Phase 2 Engagement Summary  
& Phase 3 Policies, Actions,  
Monitoring Framework &  
Design Guidelines**

1

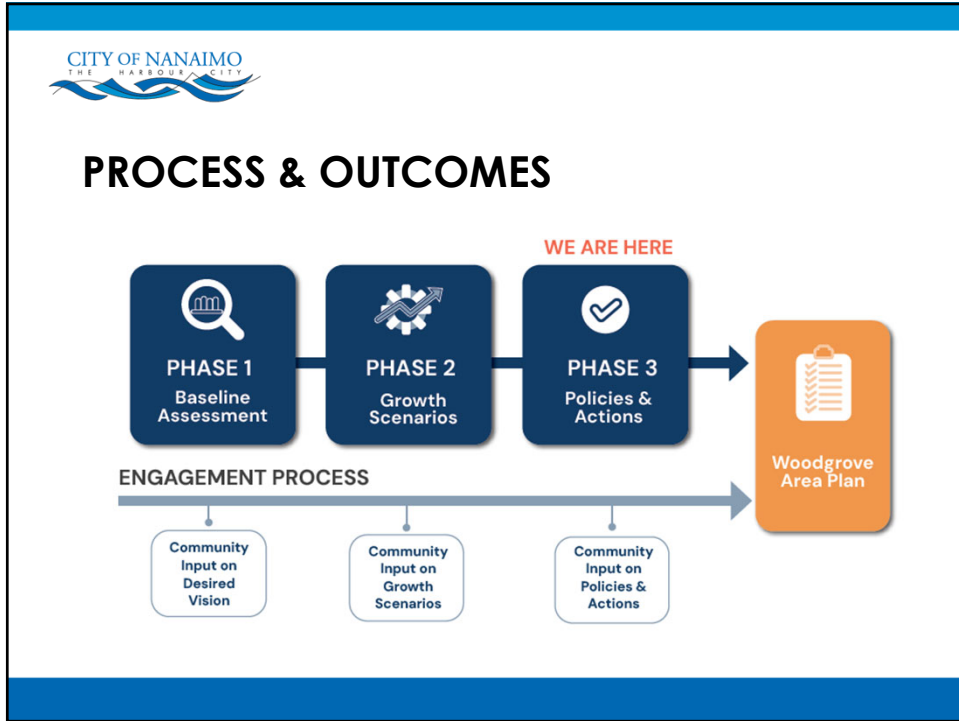
CITY OF NANAIMO  
THE HARBOUR CITY

**STUDY AREA**



Woodgrove Urban Centre  
District of Lantzville

2

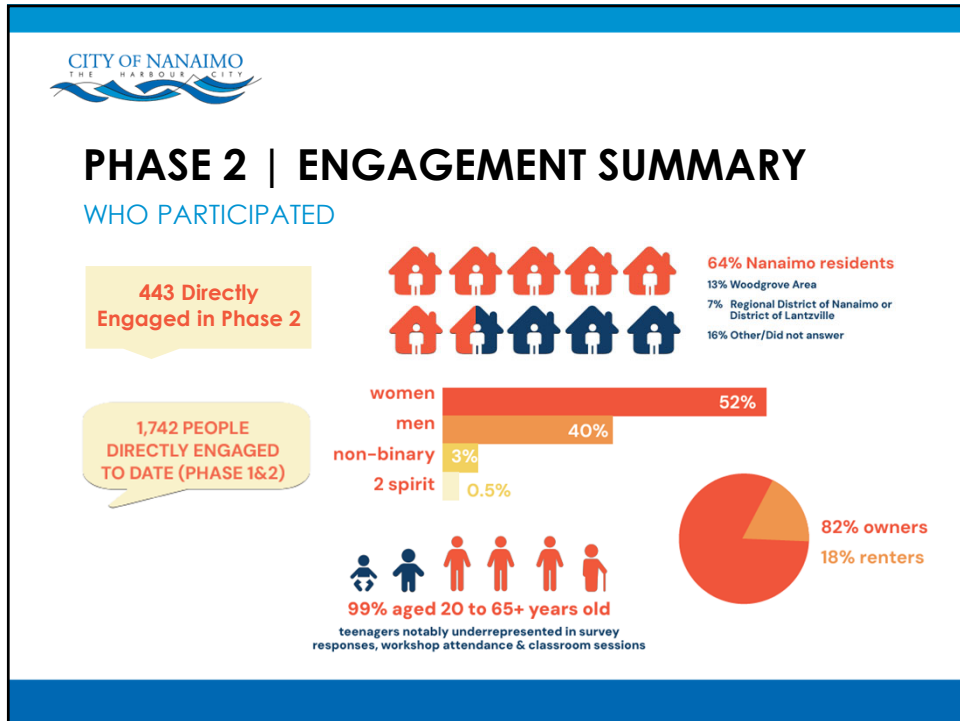


3

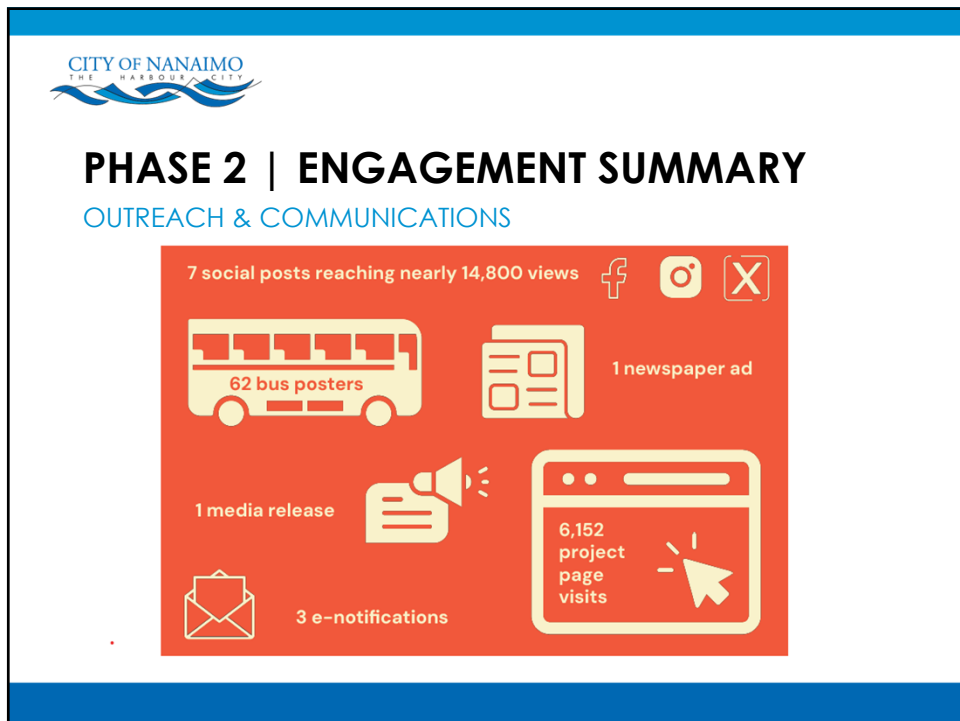
**CITY OF NANAIMO**  
THE HARBOUR CITY

## PHASE 2 ENGAGEMENT SUMMARY

4



5




6

**CITY OF NANAIMO**  
THE HARBOUR CITY

## PHASE 2 | ENGAGEMENT SUMMARY

### WHAT WE LEARNED

SCENARIO 3 |  
+7,500 people



Response	Percentage
Supportive	38%
Indifferent	31%
Unsupportive	30%

- Most support for Scenario 3
- Housing
  - Concerns about density and development impacts
- Transportation
  - Support for new transit exchange, infill of sidewalks and cycling infrastructure, and intersection improvements
- Access to Daily Needs
  - Support for new parks, recreation, culture and wellness facilities

7

**CITY OF NANAIMO**  
THE HARBOUR CITY

## PHASE 3 DRAFT POLICIES, ACTIONS, MONITORING FRAMEWORK & DESIGN GUIDELINES

8

**CITY OF NANAIMO**  
THE HARBOUR CITY

## PHASE 3 | POLICY, ACTION & MONITORING FRAMEWORK

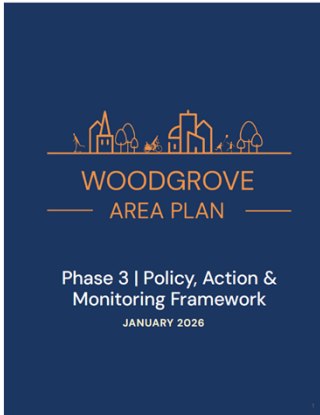


Table of Contents

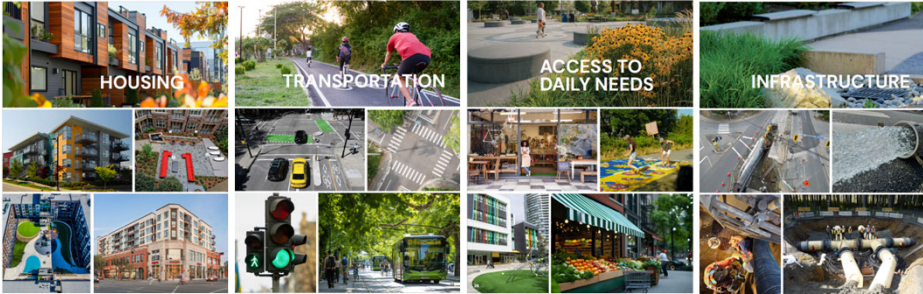
- part 1 Project Overview
- part 2 Policies
- part 3 Financial Mechanisms
- part 4 Actions
- part 5 Monitoring
- part 6 Design Guidelines

9

**CITY OF NANAIMO**  
THE HARBOUR CITY

## PHASE 3 | POLICY, ACTION & MONITORING FRAMEWORK

part 2 Policies



The grid contains images related to four main categories:

- HOUSING:** Modern multi-story residential buildings, townhomes, and interior views of living spaces.
- TRANSPORTATION:** People cycling on a path, a bus, a traffic light, and a street scene with a car.
- ACCESS TO DAILY NEEDS:** A community center or library, a playground, and a public square.
- INFRASTRUCTURE:** A modern building facade, a street with a utility box, and a close-up of a road surface.

10





## NEXT STEPS

- Engage the community on Phase 3 recommendations
- Prepare the Woodgrove Area Plan

