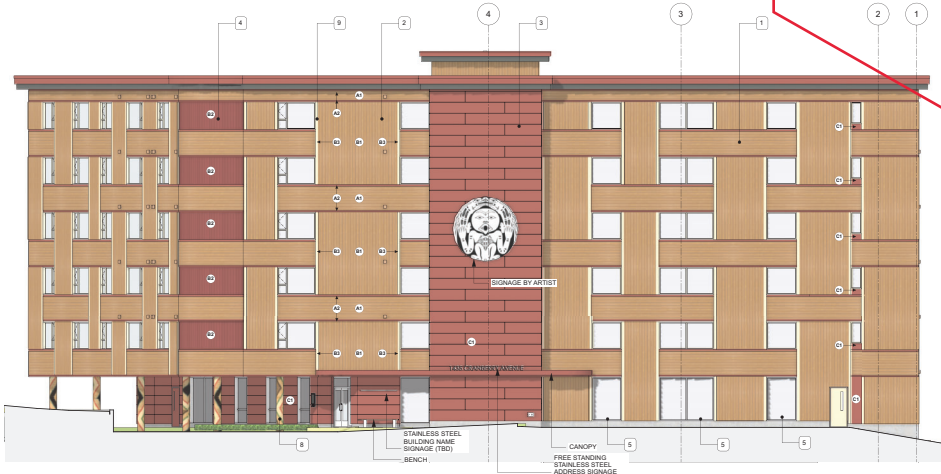


ATTACHMENT D BUILDING ELEVATIONS AND DETAILS

Requested Height Variance



Facing Cranberry Connector



Facing Cranberry Avenue



Facing Thirteenth Street



MacDonald Hargay Architects Ltd.
1822 Unit E, Cranberry Avenue, BC V8B 3B7

1435 CRANBERRY AVENUE
NANAIMO, BC



REVISION
DATE
BY

RECEIVED
DP1359
2025-NOV-12
Curfest Planning

REVISION
DATE
BY

BUILDING ELEVATIONS

ISSUED FOR:

A2.01

MATERIAL PALETTE

1 HORIZONTAL METAL PLANK CLADDING COLOUR: WOOD TONE	3 ACM PANEL (FR CORE) CLADDING COLOUR: RED	5 ANODIZED CURTAIN WALL COLOUR: DARK GREY OR RED	7 SEMITRANSITIOUS PISUM PANEL COLOUR: DARK GREY OR RED
2 VERTICAL METAL PLANK CLADDING COLOUR: WOOD TONE	4 VERTICAL METAL PLANK CLADDING COLOUR: RED	6 VINYL WINDOW COLOUR: BEIGE	8 PAINTED MURAL ON CONCRETE COLUMN COLOUR: GREY

A1 A2 B1 B3 B2 C1 SEE ASSEMBLIES DWG A0 04 FOR CLADDING TYPES