

# ATTACHMENT D PROPOSED FLOOR PLAN



THIS DESIGN IS NOT TO BE REPRODUCED, COPIED OR REUSED WITHOUT THE WRITTEN APPROVAL OF IMMERSIVE DESIGN INC. THIS DESIGN IS TO BE UTILIZED ONLY FOR THE SITE INTENDED AND DESIGNATED ON THE DRAWINGS. IMMERSIVE DESIGN INC. NOR THE DESIGNER/DRAFTSMAN ACCEPT ANY RESPONSIBILITY FOR THE FOLLOWING CONFORMITY OF PLANS TO THE SITE, ERRORS AND OMISSIONS, VARIOUS ENGINEERING REQUIREMENTS. ANY HOUSE BUILT FROM THESE PLANS, INFORMATION PROVIDED ON EXISTING BUILDINGS OR SITE. THESE PLANS ARE NOT TO BE REPRODUCED, COPIED OR REUSED WITHOUT THE WRITTEN APPROVAL OF IMMERSIVE DESIGN INC.

**RECEIVED**  
**DVP488**  
**2025-AUG-26**  
Current Planning

Project Name:  
Existing Carport to  
Proposed Commercial  
Kitchen  
205 - Seventh Street,  
Nanaimo, British Columbia

Spatial Separation, Fire  
Separation, Existing &  
Proposed Floor Plan

Scale: AS NOTED Drawing No.  
Drawn by: cjm  
Date: 06/13/25  
File #: 2025-0067

**A2**

**Assemblies Suffix Designation**

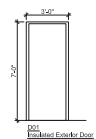
Assembly letter suffix designation indicates the fire resistance rating required for the fire separator. Refer to assembly description for specific rating information.

A	45 minutes fire resistance rating
B	1 hour fire resistance rating
C	1.5 hour fire resistance rating
D	2 hour fire resistance rating
E	3 hour fire resistance rating
F	4 hour fire resistance rating
S	0 hour fire resistance rating

**Wall Assemblies**

Note: Provide a continuous polyethylene foam gasket under exterior stud bottom flange. Bottom track to be 1/8" sealed to the concrete slab. A continuous sealant bead on the exterior side of the track/slab interface...

W0	Typical Exterior Wall • Exterior Plym (Continuous Sliding Match to Existing) • 1/2" Type X GWS • 2x6 Wood Studs (Max. Spacing of 16" Center for Fire Rating) • Self-Draining (SD) • 5/8" Poly Vapor Retarder (Continuous) • 5/8" Type X Gypsum Board
W1A	SIFF SEPARATION WALLS W/ 1/2" TYPE X GWS • 1/2" Type X GWS • 2x6 Wood Studs @ 16" O.C. • 1/2" Fiberglass Distribution • Rigid Foam Insulation (one side only) @ 1/2" O.C. @ 24" O.C. • 5/8" Poly Vapor Retarder (Continuous) • 1/2" Type X Gypsum Board



**Ceiling Assemblies**

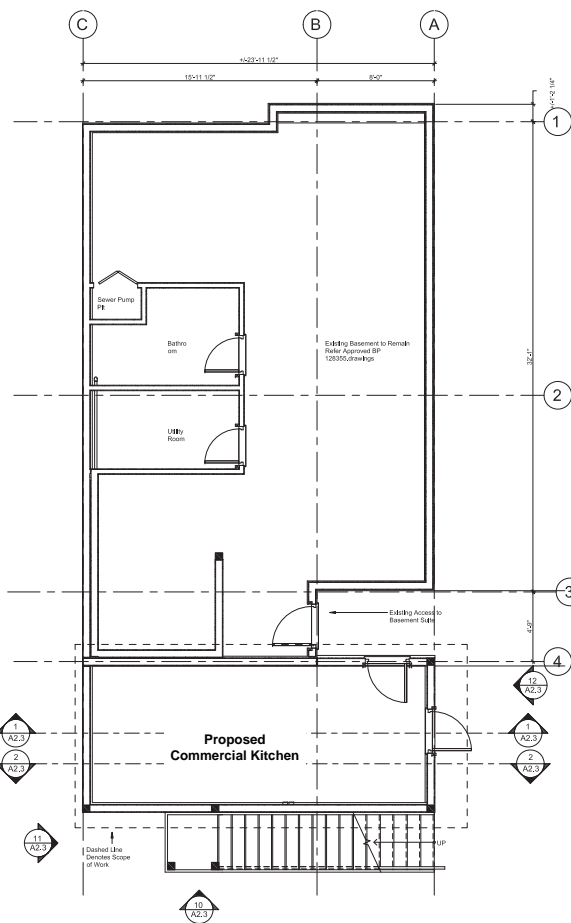
C1	Gypsum Ceiling 45min-F.R.B. • Rigid Channel 1 Bay 25 sq. Rigid Channel Spaced 16" O.C. • Support Panel 1 Bay 25 sq. Rigid Channel Spaced 16" O.C.
----	---

**Kitchen Equipment Details**

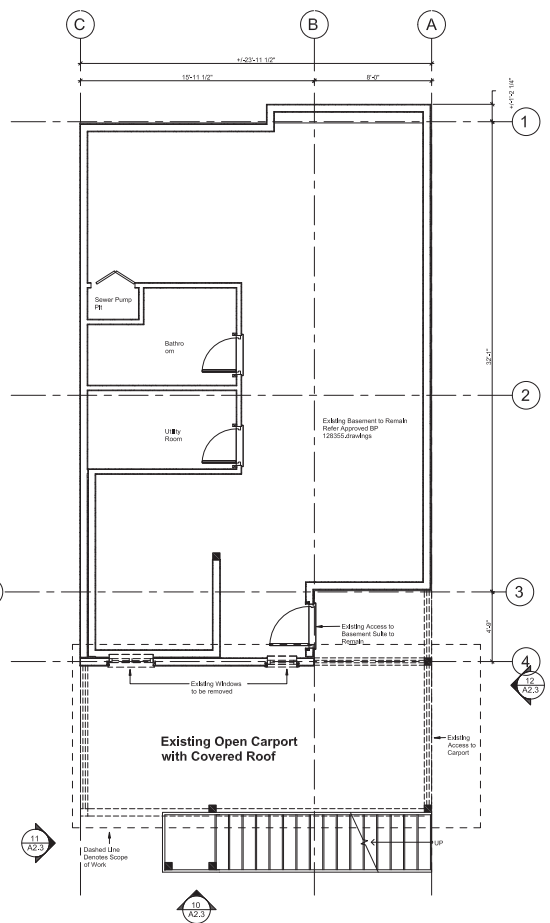
Equipment Dimensions

- Sink: 24" x 18" x 2"
- Faucet: 24" x 6" x 2 1/2"
- Freezer: 24" x 18" x 2 1/2"
- Fridge: 24" x 24" x 7 1/2"
- Stove: 24" x 18" x 6"
- Sinks: 32" x 24" x 2"
- Sinks: 32" x 24" x 2"
- Kitchen Hood 24" x 6" Duct. Refer to Manufacturer Spec Sheet

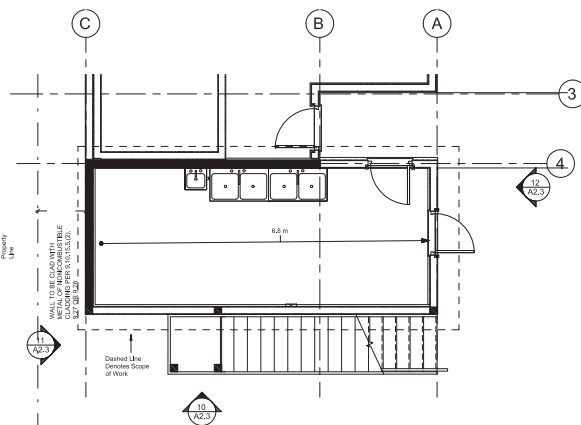
**45 MIN FIRE SEPARATION**  
W/ FRP 45MINSTC 43  
• 1/2" TYPE X GWS  
• 2x4/2x6 STUDS @ 16" O.C.  
• RIGID FOAM INSULATION ONE SIDE  
• 1/2" TYPE X GWS



**Proposed New Kitchen Floor Plan**  
1/4" = 1'-0"  
TRUE NORTH



**Existing Basement Floor Plan**  
1/4" = 1'-0"  
TRUE NORTH



**Spatial Separation Floor Plan**  
1/4" = 1'-0"  
TRUE NORTH