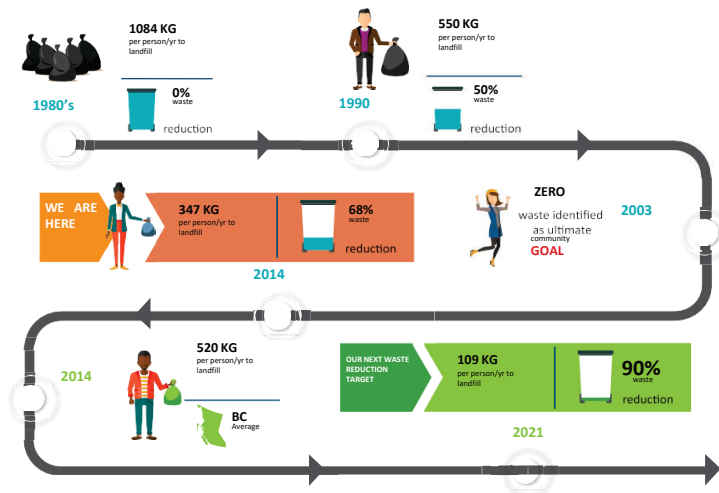


# Waste Diversion in our Region



## Historical Waste Management



# Landfill Disposal Bans

- Gypsum (1991)
- Land clearing waste (1992)
- Corrugated cardboard (1993)
- Recyclable Paper (1997)
- Scrap Metal (1997)
- Tires (1997)
- Commercial organic waste (2005)
- Garden waste (2007)
- Wood Waste (2007)
- Stewardship Materials (2007)
- Household Plastic Containers (2009)
- Metal Food & Beverage Containers (2009)

www.rdn.bc.ca

## Solid Waste Management Plan

New Zero Waste Programs	Status	Estimated Diversion
Expanded Zero Waste Education	Complete	Not Quantifiable
Zero Waste Recycling	Complete	1%
Household Hazardous Waste	Complete	<1%
Expanded Industrial, Commercial and Institutional Waste Management Diversion	In Progress	3%
Expanded Construction and Demolition Waste Diversion	In Progress	3%
Mandatory Waste Source Separation	In Progress- adopted Jan 1, 2025	10%
Waste Hauler Licensing	In Progress – adopted Jan 1, 2025	
New program Diversion Total		17%
Anticipated Diversion through Provincial/Federal programs		5%
Existing Diversion		68%
Total		<u>90%</u>

www.rdn.bc.ca

## KEY PRINCIPALS

- User pay
  - Tipping fees
  - Curbside user fees
  - Curbside limits
- Encourage Private Investment
  - Landfill Disposal bans
    - Regulate, Collaborate w/ waste industry, Educate residents and Enforce bans
  - Waste Stream Management Licensing Program
    - Create Private sector recycling infrastructure by level playing field



[www.rdn.bc.ca](http://www.rdn.bc.ca)

## Construction & Demolition Waste



**58% of materials**  
can be diverted  
from landfill

- Reusing materials both onsite and offsite can significantly reduce waste, tipping fee expenses and operational costs, all while keeping valuable materials in circulation
- Divert 95% of material by volume from landfill. In a typical deconstruction, 70% of materials can be recycled and 25% can be reused

[www.rdn.bc.ca](http://www.rdn.bc.ca)

# Construction and Demolition Waste Management

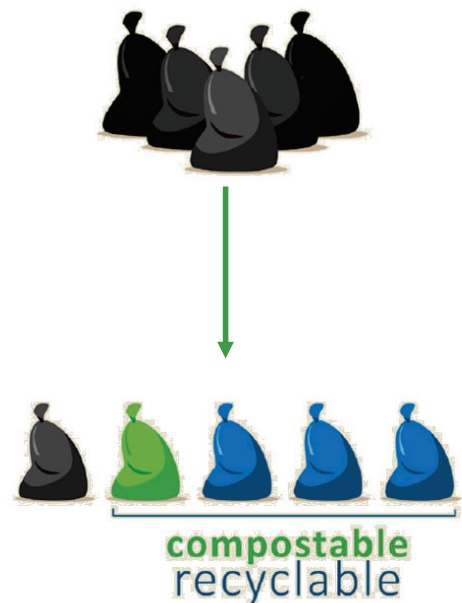


- C&D waste constitutes about 5%\* of landfill waste.
- The Construction Waste Best Practices Guide aids diversion efforts.
- Effective strategies improve recycling and waste recovery.
- The 'What Goes Where' tool helps proper disposal.

[www.rdn.bc.ca](http://www.rdn.bc.ca)

## Mandatory Waste Source Separation & Waste Hauler Licensing Bylaws

- Mandatory Waste Source Separation (MWSS) & Waste Hauler Licensing (WHL)
- 10% increase in total waste diversion



[www.rdn.bc.ca](http://www.rdn.bc.ca)

# Waste Hauler Licensing



Disposal levy

Reduced tip fee



[www.rdn.bc.ca](http://www.rdn.bc.ca)

## STOP DUMPING

**DUMPING HERE IS:**  
**ILLEGAL - OFFENSIVE - EXPENSIVE**  
**Harmful to the Environment**

**OBSERVE, RECORD & REPORT**

**250-390-6560**  
**1-877-607-4111**  
[www.rdn.bc.ca](http://www.rdn.bc.ca)

**(RAPP) Report All Poachers and Polluters**  
**@ 1-877-952-7277**

**ALTERNATIVES: Call or check RDN online recycling directory**



[www.rdn.bc.ca](http://www.rdn.bc.ca)

# Questions?

