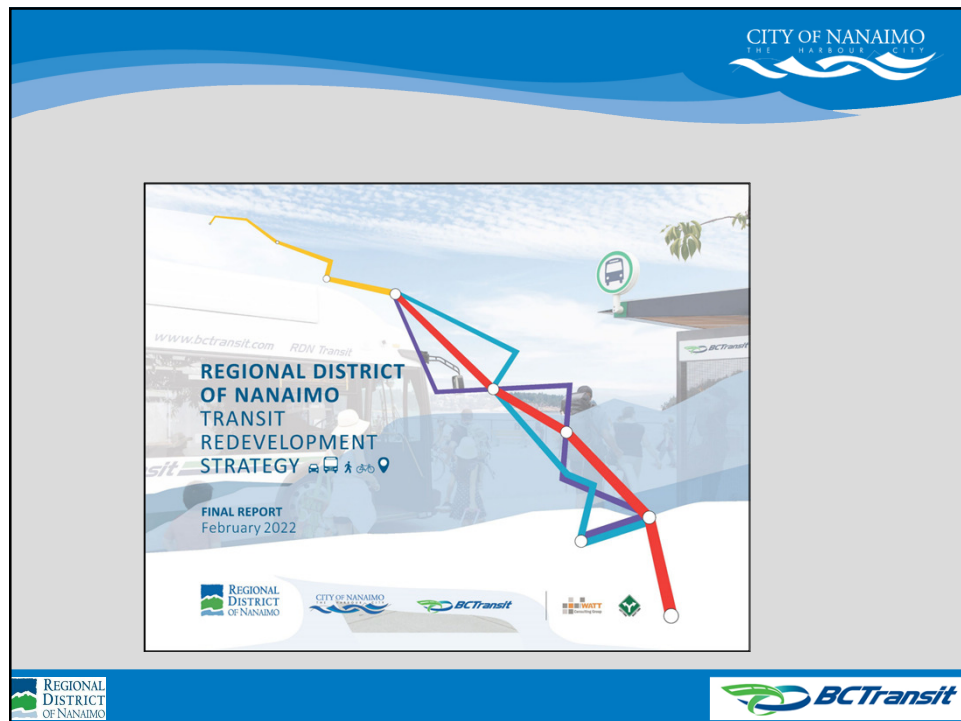






1



2

CITY OF NANAIMO
THE HARBOUR CITY

➤ 960 Surveys Completed
➤ 177 People at the Public Event

TOP DESIRED AMENITIES FOR TRANSIT EXCHANGE

- 1 LIGHTING AND VISIBILITY
- 2 CLEARLY MARKED PEDESTRIAN CROSSINGS
- 3 STREET TREES AND GREENERY
- 4 REAL-TIME BUS ARRIVAL INFORMATION

REGIONAL DISTRICT OF NANAIMO

BCTransit

3

CITY OF NANAIMO
THE HARBOUR CITY



DESIGN COMMERCIAL FUTURE PHASE 3

ONE COMMERCIAL REDEVELOPMENT

FUTURE JEAN BURNS REDEVELOPMENT

LEVEL WALKWAY FROM VICTORIA CRESCENT TO EXCHANGE

REPLACEMENT CHINA STEPS DESIGN TO BE COORDINATED WITH NANAIMO CHINESE CULTURAL SOCIETY

DESIGN COMMERCIAL FUTURE PHASE 1B

TERMINAL PEDESTRIAN CROSSING LIGHT TO BE USED TO STOP TRAFFIC FOR BUS EXIT PRE-EMPTION

TERMINAL AVENUE UPGRADES PHASE 1

PASSENGER PICKUP BAY

NORTHBOUND RAPID BUS DROP OFF / PICK UP

PASSENGER DROP OFF BAY

SOUTHBOUND RAPID BUS DROP OFF / PICK UP

PEDESTRIAN CROSSING

PASSENGER PICKUP BAYS

PRIVATE PARKING FOR SHAW LANE ADDRESSES

PRE-EMPTION SIGNALS FOR BUS EXCHANGE EXIT

2 GENDER NEUTRAL ACCESSIBLE PUBLIC BATHROOM

NEW STAIRS

MOBILITY RAMP TO LOIS LANE

REGIONAL DISTRICT OF NANAIMO

BCTransit

4



5




6

CITY OF NANAIMO
THE HARBOUR CITY

FEBRUARY 2024

On-Street Infrastructure Design Guide





Design Considerations

CHAPTER 3 Bus Stop Planning Principles	14
3.1 INTRODUCTION	14
3.2 SAFETY AND ACCESSIBILITY	14
3.3 STOP INTERVALS	14
3.4 PLACEMENT	14
3.5 CONFIGURATIONS	15
3.6 AMENITIES	15
3.7 MAINTENANCE	16






7


CITY OF NANAIMO
THE HARBOUR CITY

Design Considerations

SAFE DESIGN

Security Achieved through Functional Environmental Design or SAFE Design, is a standardized approach to physical security that reduces the risk and fear of crime by design, policy, and placemaking.

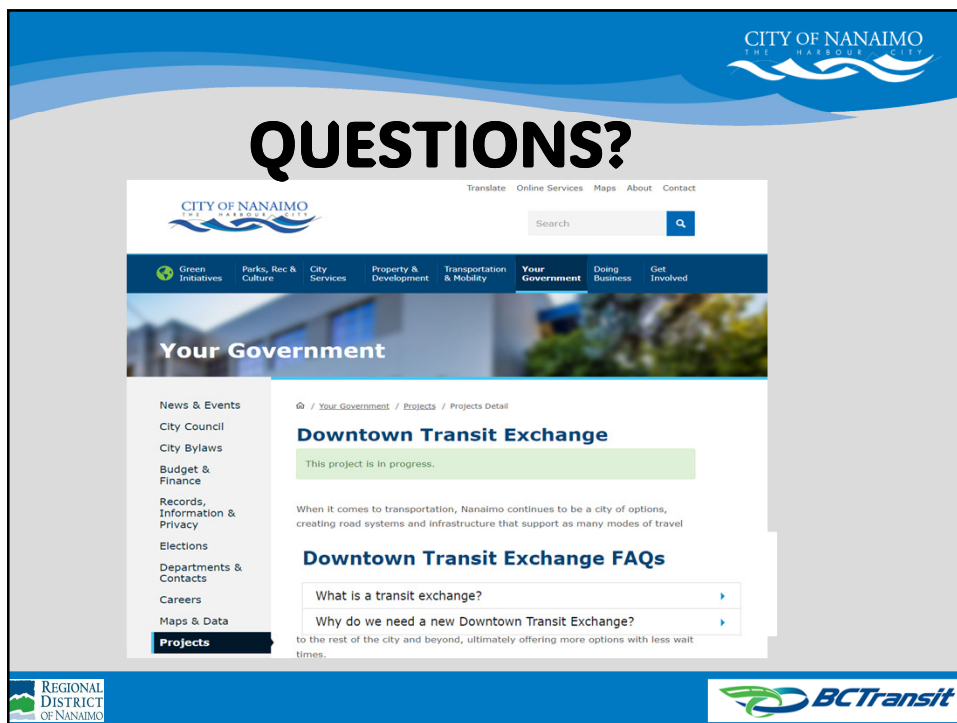




8



9



10