

# ATTACHMENT E WINDOW AND DOOR SCHEDULES

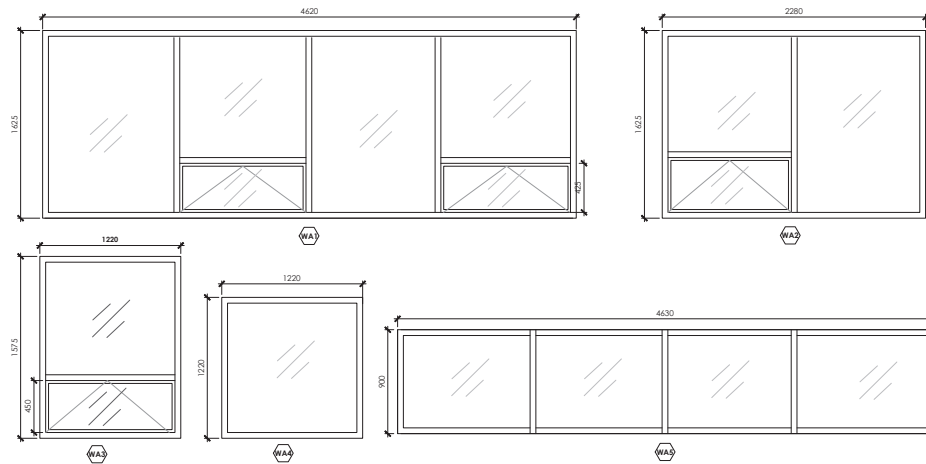
**WINDOW SCHEDULE - ADDITION**

	TYPE	DIMENSIONS		GLASS TYPE	MATERIALS	FINISH	QUANTITY	NOTES
		WIDTH	HEIGHT					
ADDITION	WA1	4630	1625	TG	FG			
	WA2	2280	1625	TG	FG			
	WA3	1220	300	TG	FG			
	WA4	1220	1220	TG	FG			FIXED GLASS
	WA5	4630	900	TG	FG			FIXED GLASS 3RD FLOOR COURT ROOM

**LEGEND:**  
 TG TRIPLE GLAZED  
 DG DOUBLE GLAZED  
 WD WOOD  
 FG FIBREGLASS  
 EXS EXISTING

**GENERAL NOTES:**  
 1. ALL DIMENSIONS IN mm, U.N.O.  
 2. REFER TO SPECIFICATIONS FOR WINDOW PERFORMANCE DETAILS.

**ADDITION WINDOW TYPES**



ARCHITECT  
**THIBODEAU**  
 ARCHITECTURE-DESIGN

consultant team  
**OC3**  
 ENGINEERING

**m3**  
 mechanical  
 CONSULTANTS INC.

**rjc** Creative Thinking  
 Practical Results  
 Read Jones Christoffersen Ltd.

**agile**  
 PROJECT MANAGEMENT

Date	Description	Rev.
14-FEB-24	ISSUED FOR HERITAGE PERMIT	D
14-FEB-24	ISSUED FOR PERMITS	C
14-FEB-24	ISSUED FOR PERMITS	B
14-OCT-23	ISSUED FOR PERMITS	A

We warrant to the property of a client  
 Thibodeau Architecture + Design. A written  
 agreement by THIBODEAU ARCHITECTURE-DESIGN  
 INC. shall constitute the contract. Construction  
 drawings on file and immediately return the  
 architect of all errors and omissions.

**BC-1353/ON-194984**  
**NANAIMO COURTHOUSE REHABILITATION**  
 35 FRONT STREET  
 NANAIMO BC V9R 5J1



project number **BC-1353**

sheet title  
**WINDOW SCHEDULE -  
 ADDITION BUILDING**

**RECEIVED**  
**HAP31**  
**2025-FEB-24**  
 Community &  
 Cultural Planning

Date	Sheet number
24-08-23	A001
AS SHOWN	
897	
PL	101

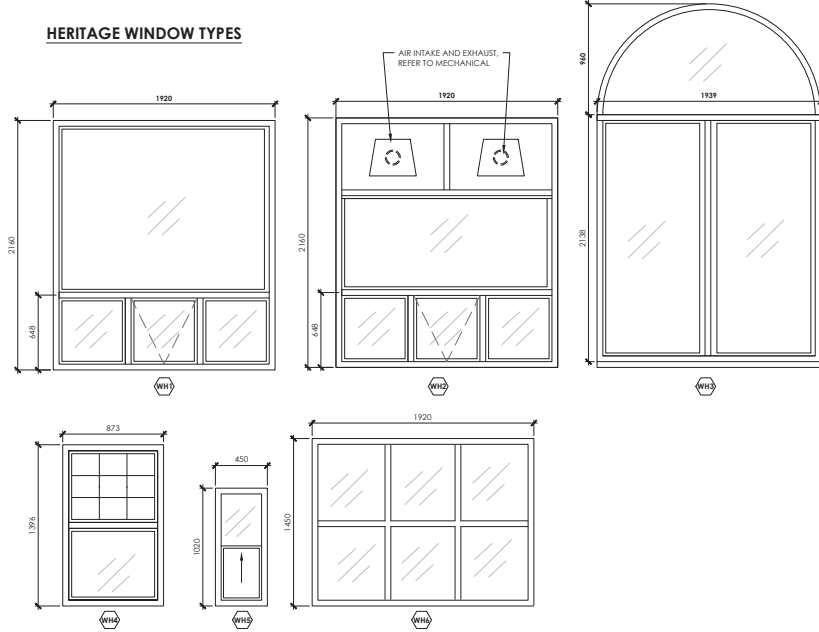
Drawing name: I:\02\_P1\02\_P1\AN\Projects\_Jared\BC-1353\_ON-194984\_Nanaimo-CU\_Refresh\_Currenl\1\_CADD\1353\_Nanaimo-CU\_Sheets\_2025-02-17.dwg  
 Plot date: Feb 19, 2025 - 2:10pm  
 Customized by: jared@thibodeau.com

WINDOWS SCHEDULE - HERITAGE						
TYPE	DIMENSIONS		GLASS TYPE	MATERIALS	QUANTITY	NOTES
	WIDTH	HEIGHT				
HERITAGE	WH1	1920	2140	DG	WD	
	WH2	1920	2160	DG	WD	
	WH3	1920	2140	DG	WD	WINDOWS ON NORTH ELEV
	WH4	1070	1580	DG	WD	WINDOWS WITH SEMI-CIRCULAR ARCH
	WH5	450	1020	DG	WD	
	WH6	1920	1450	DG	WD	
HERITAGE REFURBISH	WX1	EXS	EXS	EXS	EXS	WINDOW TO BE REFURBISHED
	WX2	EXS	EXS	EXS	EXS	WINDOW TO BE REFURBISHED
	WX3	EXS	EXS	EXS	EXS	WINDOW TO BE REFURBISHED

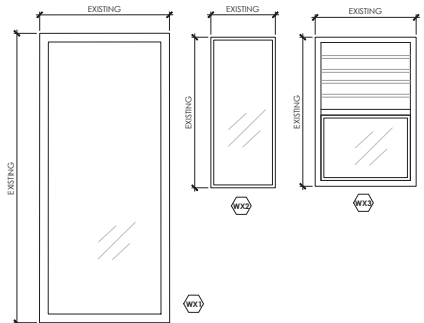
**LEGEND:**  
 TG TRIPLE GLAZED  
 DG DOUBLE GLAZED  
 WD WOOD  
 FG FIBREGLASS  
 EXS EXISTING

**GENERAL NOTES:**  
 1. ALL DIMENSIONS IN mm, U.N.O.  
 2. REFER TO SPECIFICATIONS FOR WINDOW PERFORMANCE DETAILS.

**HERITAGE WINDOW TYPES**



**HERITAGE WINDOWS TO BE REFURBISHED**



Drawing name: I:\02\_P\02\_VAN Project\_Justd\MC-1353\_ON-194984\_Nanaimo-CU\_Refresh\_Corner1\1\_CAD\MC-1353\_Nanaimo-CU\_Sheets\_2025-02-19.dwg  
 For scale: Feb 19, 2025 - 2:11pm  
 Created by: pritchard@pac.ca



Date	Description	Rev
14-FEB-25	ISSUED FOR HERITAGE BY D	1
14-FEB-25	ISSUED FOR WH1 CD	C
14-FEB-25	ISSUED FOR WH2 CD	E
14-FEB-25	ISSUED FOR WH3 CD	A
14-FEB-25	ISSUED FOR WH4 CD	A

We warrant to the property of a Robert Thibodeau Architecture + Design. A written warranty by R.T.A.D. is required prior to any use of the drawings. Contractors shall advise any alterations on the spot and immediately inform the architect of all errors and omissions.

**BC - 1353 / ON - 194984**  
**NANAIMO COURTHOUSE REHABILITATION**  
 35 FRONT STREET,  
 NANAIMO BC - V9R 5J1

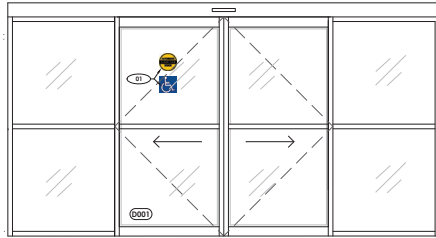


project number: **BC-1353**

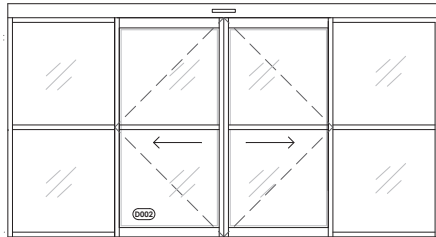
sheet title: **WINDOW SCHEDULE - HERITAGE BUILDING**

**RECEIVED**  
**HAP31**  
**2025-FEB-24**  
 Community & Cultural Planning

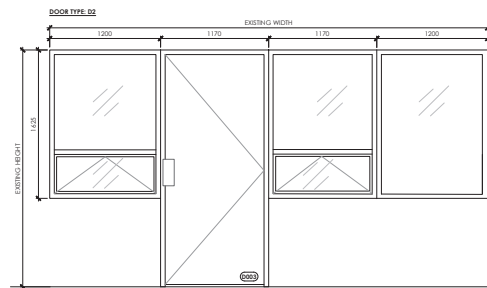
Date	Sheet number
24-08-24	A002
AS SHOWN	
891	
PT	01



1 EXTERIOR VIEW ENTRANCE DOOR #D001 SCALE: 1:25



2 EXTERIOR VIEW ENTRANCE DOOR #D002 SCALE: 1:25



3 EXTERIOR VIEW EMERGENCY EXIT SCALE: 1:25

DOOR AND FRAME SCHEDULE																				
#	FROM	TO	DOORS										FRAMES		HARDWARE					SET #
			NEW	EXISTING	LEAF TYPE	HAND	MATERIAL	THICK	WIDTH	HEIGHT	FINISH	MATERIAL	FINISH	HINGES	DOOR FULL	DOOR PART	THRESHOLD	ELECT	STRIP	
D001	VESTIBULE	EXTERIOR	●	●	SL	RH/LH	AL+GL	50	1830	2134	ANOD	AL	ANOD	●	●	●	●	●	1	
D002	LOBBY	VESTIBULE	●	●	SL	RH/LH	AL+GL	50	1830	2134	ANOD	AL	ANOD	●	●	●	●	●	1	
D003	WAITING	EXTERIOR	●	●	SD	RH	MTL	45	TBC	TBC	PNT	AL	ANOD	●	●	●	●	2		
D004	CORRIDOR	ELECTRICAL	●	●	SD	RHR	MTL	45	915	2034	PNT	MTL	PNT	●	●	●	●	2		

NOTES:  
 1) DOORS TO BE FACTORY-PREPARED FOR HARDWARE AS SPECIFIED BY DOOR SUPPLIER.  
 2) ANODIZED ALUMINIUM FINISH TO MATCH EXISTING DOORS AND FRAME ON SITE.  
 3) CONTRACTOR TO VERIFY EXISTING OPENING DIMENSIONS ON SITE PRIOR TO SUBMITTING SHOP DRAWINGS.  
 4) NEW DOOR TO HAVE TRIPLE GLAZING WITH LAMINATED GLASS REINFORCED WITH LAYERS OF PLASTICIZED FILM MEETING ASTM F1233 - THE STANDARD TEST METHOD FOR SECURITY GLAZING MATERIALS AND SYSTEMS.  
 5) PUSH BAR TO BE MOUNTED ON THE DOOR HORIZONTAL, BETWEEN 900mm AND 1100 mm A.F.F.  
 6) DOORS D001 AND D002 ARE TO BE NOTED AS SLIDING DOORS W/ BREAKAWAY PANELS.  
 7) CONFIRM DOOR THICKNESS, SIZE, AND CONSTRUCTION BEFORE ORDERING HARDWARE. BALANCE OF W/STRIPPING BY DOOR SUPPLIER.  
 8) ELECTRIC HINGES TO BRING POWER TO EXIT DEVICES HAVE BEEN SPECIFIED. IF EXISTING FRAME HAS EPT POWER TRANSFER, THE GC IS TO INSTALL A COVER PLATE ON THE EXISTING FRAME.

LEGEND:  
 RH/LH SINGLE HAND, LEFT HAND  
 SD SINGLE DOOR  
 SL SLIDING DOOR  
 AL ALUMINIUM  
 AL+GL ALUMINIUM AND GLASS  
 ANOD ANODIZED (CLEAR, UNO.)  
 MTL METAL  
 PNT PAINTED  
 EX EXISTING

HARDWARE SCHEDULE (TO BE UPDATED)					SET #1 METHOD OF OPERATION	
SET #1	QTY	TYPE	DESCRIPTION	FINISH		
1	1	CYLINDER				1) ENTRY FROM OUTSIDE
1	1	TWO POINT LOCK				• DOORS TO HAVE MOTION SENSOR BASED SLIDING OPERATION DURING REGULAR OFFICE HOURS.
1	1	KEYSWITCH-6 POSITION ALARM CONTACTS				• DOORS TO BE MANUALLY LOCKED DURING AFTER OFFICE HOURS. STEEL LOCK PINS TO BE ENGAGED TO PREVENT DOORS FROM SLIDING OPEN AND BEING BROKEN OUT.
1	1	THRESHOLD				• SWITCH TO BE PROVIDED TO DISENGAGE THE MOTION SENSOR BASED SLIDING OPERATION.
1	1	POWER SUPPLY	C/W BATTERY BACKUP			2) EXIT FROM SECURE SIDE
1	1	RELAY				• FREE EXIT FROM THE SECURE SIDE DURING REGULAR OFFICE HOURS VIA MOTION SENSOR DOORS.
2	2	WEATHER STRIP GASKETS				• SLIDING DOORS TO HAVE BREAKAWAY PANELS IN CASE OF POWER FAILURE, OR FIRE.
						• NO EXIT THROUGH THIS DOOR AFTER REGULAR OFFICE HOURS.
SET #2	QTY	TYPE	DESCRIPTION	FINISH		SET #2 METHOD OF OPERATION
2	1	HINGE, FULL MORTISE, H/VY WT		US 32D		1) ENTRY FROM OUTSIDE
1	1	HINGE, FULL MORTISE, H/VY WT		US 32D		• NO ACCESS FROM OUTSIDE
1	1	RIM EXIT DEVICE, EXIT ONLY		US 32D		2) EXIT FROM SECURE SIDE
1	1	CONC OVERHEAD STOP		630		• DURING OFFICE HOURS, DOOR TO BE DIS-ARMED BY KEY AT THE EXIT DEVICE ALLOWING FREE EGRESS.
1	1	SURFACE CLOSER		EN		• AFTER HOURS, DOOR CAN BE ARMED BY KEY AT EXIT DEVICE, ALLOWING ALARMED 15 SECOND DELAYED EGRESS.
1	1	SCUFFPLATE	23H60A-H*	C32D		• UPON LOSS OF POWER/FIRE ALARM, DOOR WILL REMAIN CLOSED AND LOCKED.
1	1	ALTRACAL	1575P 84"			
1	1	GASKETING	119CN			
1	1	SWEEP	115CN			
1	1	THRESHOLD	71A			
1	1	ELECTROLYNX HARNESS	DC-C1500			
1	1	ELECTROLYNX HARNESS	DC-C012			
1	1	POWER SUPPLY	AGD101R			



EXISTING DOOR #D003

agile

#	DATE	DESCRIPTION	BY
1	2025-02-24	ISSUED FOR PERMIT	D
2	2025-02-24	ISSUED FOR REVIEW	C
3	2025-02-24	ISSUED FOR ADS	I
4	2025-02-24	ISSUED FOR ADS	A

BC-1353/ON-194984  
 NANAIMO COURTHOUSE REHABILITATION  
 35 FRONT STREET,  
 NANAIMO BC- V9R 5J7



project number: BC-1353  
 sheet title: DOOR SCHEDULE

RECEIVED  
 HAP31  
 2025-FEB-24  
 Community & Cultural Planning

DATE	24-08-24	SHEET NUMBER	A003
SCALE	AS SHOWN		
DESIGNED BY	891		
CHECKED BY	PT	REV. NO.	01

Drawing name: 1\_02\_P1 02\_VAN Project\_Justd BC-1353\_ON-194984\_Nanaimo-CU\_Refresh\_Corridor 1\_CAD (AC-1353\_Nanaimo-CU\_Sheets\_2025-02-24\_194.dwg)  
 File date: Feb 19, 2025 - 2:20pm  
 Created by: p194984