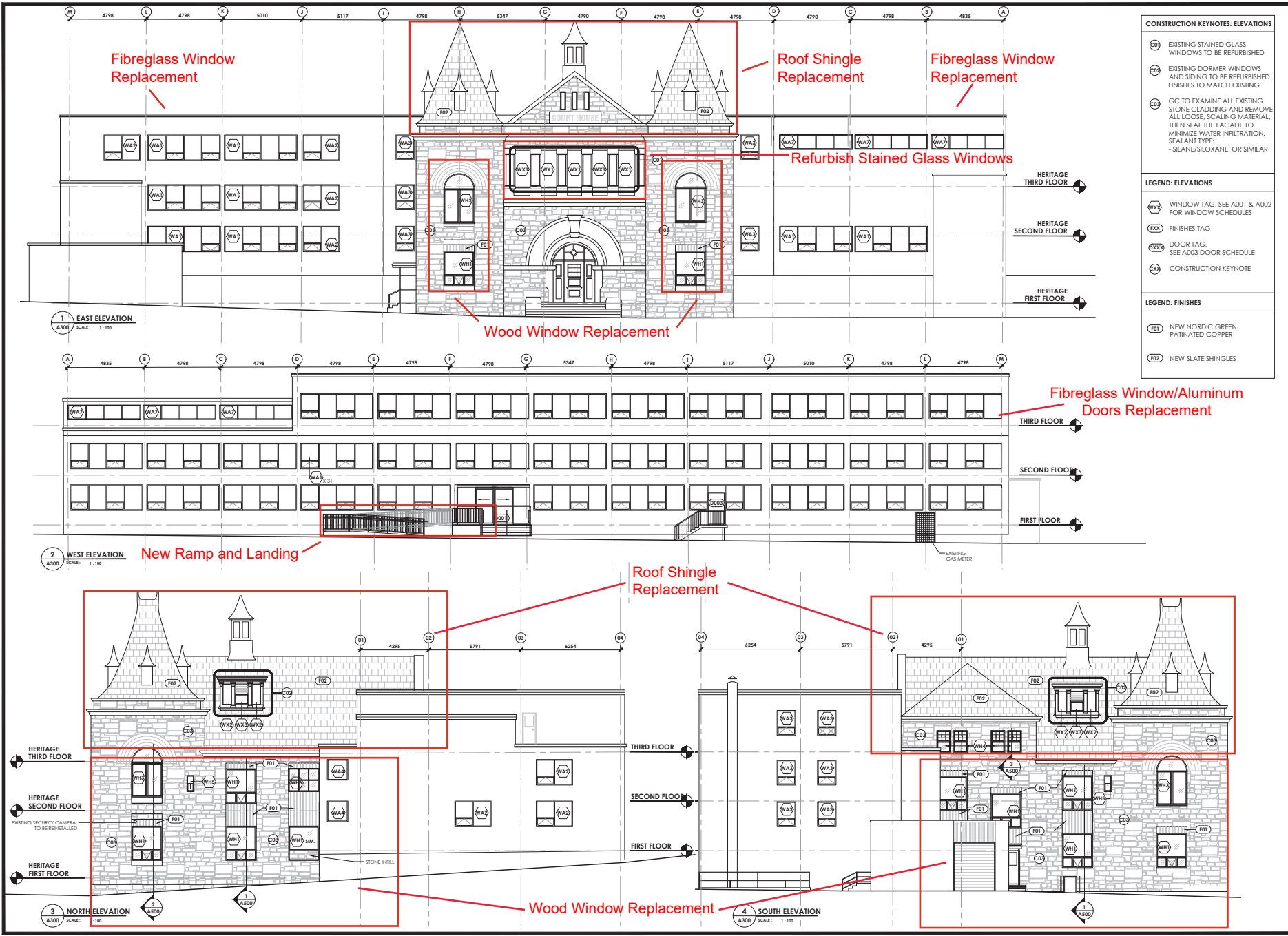


ATTACHMENT D BUILDING ELEVATIONS



CONSTRUCTION KEYNOTES: ELEVATIONS

- (R03) EXISTING STAINED GLASS WINDOWS TO BE REFURBISHED
- (R02) EXISTING DORMER WINDOWS AND SIDING TO BE REFURBISHED. FINISHES TO MATCH EXISTING
- (R01) GC TO EXAMINE ALL EXISTING STONE CLADDING AND REMOVE ALL LOOSE SCALING MATERIAL, THEN SEAL THE FACADE TO MINIMIZE WATER INFILTRATION. SEALANT TYPE: -SILOXANE/SILOXANE, OR SIMILAR

LEGEND: ELEVATIONS

- (WA) WINDOW TAG. SEE A001 & A002 FOR WINDOW SCHEDULES
- (FX) FINISHES TAG
- (DX) DOOR TAG. SEE A003 DOOR SCHEDULE
- (R) CONSTRUCTION KEYNOTE

LEGEND: FINISHES

- (F01) NEW NORDIC GREEN PATINATED COPPER
- (F02) NEW SLATE SHINGLES

architect
THIBODEAU ARCHITECTURE-DESIGN

consultant team
OC3 ENGINEERING
m3
rjc
agile

Date	Description	Rev
4-10-FEB-25	ISSUED FOR HERITAGE BY D	0
3-25-FEB-24	ISSUED FOR NRS CD - C	1
24-NOV-23	ISSUED FOR NRS CD - B	1
14-NOV-23	ISSUED FOR NRS CD - A	1

Issue

This drawing is the property of J. Robert Thibodeau Architecture & Design, an affiliate of the drawing. Contractors must verify all dimensions on site and discrepancies. Report the discrepancy to the architect immediately.

**BC-1353/ON-194984
NANAIMO COURTHOUSE REHABILITATION**
35 FRONT STREET,
NANAIMO BC-V9R 5J1

Issued by Heritage Permit

REGISTERED ARCHITECT
J. ROBERT THIBODEAU
000005-02-24

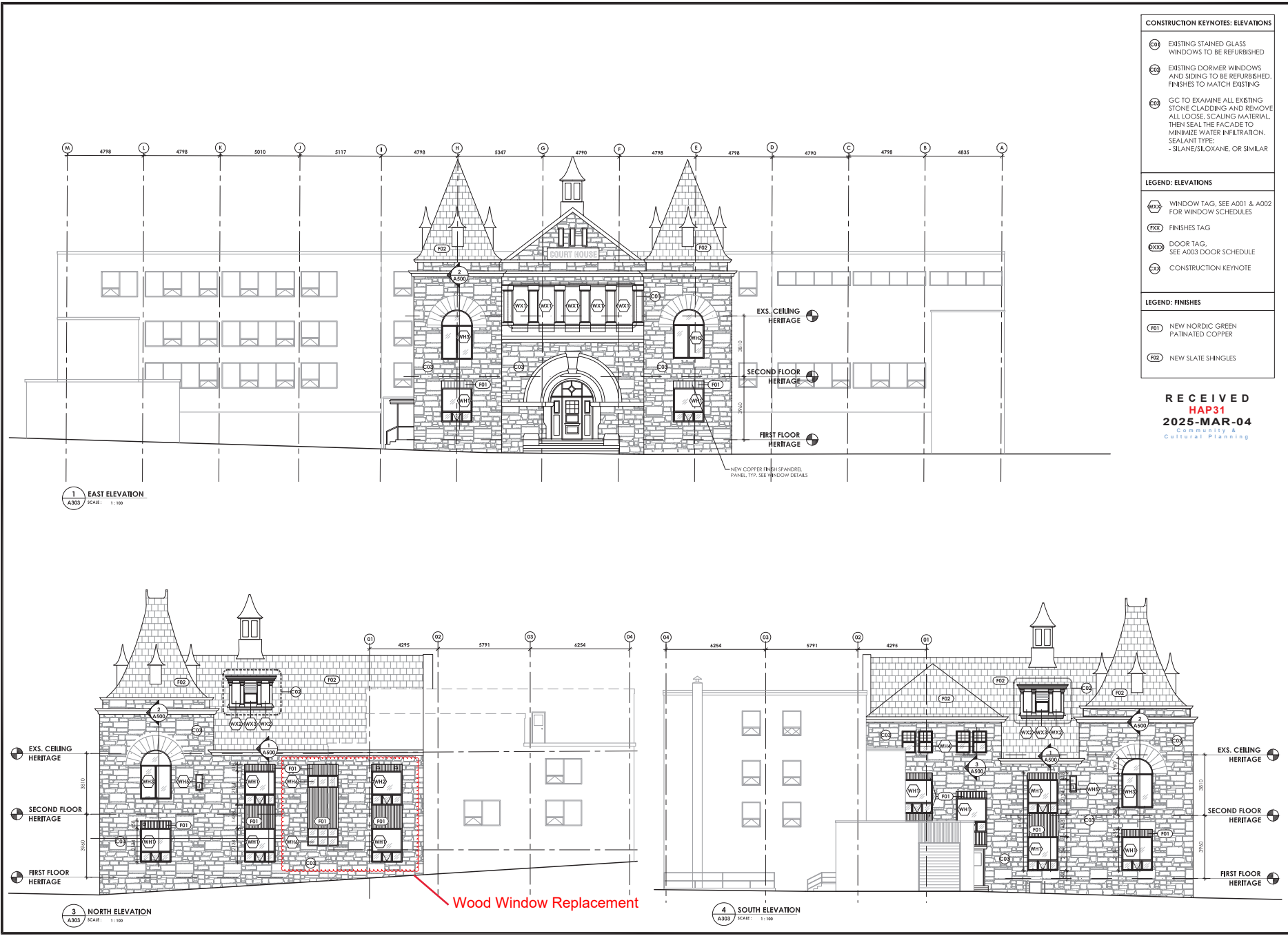
PROJECT NUMBER: BC-1353

PROJECT TITLE: BUILDING ELEVATIONS

DATE	DESCRIPTION
24-NOV-23	AS SHOWN
24-NOV-23	A300
14-NOV-23	REV
14-NOV-23	REV
14-NOV-23	REV

Prepared by: J. R. Thibodeau, J. R. Thibodeau Architectural Services Ltd. (JRTAS) 1141996, Nanaimo, BC, Canada. Current: 1, CAD, 1353, Nanaimo, BC, Canada, 2025-02-24. The drawing was prepared on 2025-02-24 at 2:27 PM. Last saved by: jrt.





CONSTRUCTION KEYNOTES: ELEVATIONS

- CO1 EXISTING STAINED GLASS WINDOWS TO BE REFURBISHED
- CO2 EXISTING DORMER WINDOWS AND SIDING TO BE REFURBISHED. FINISHES TO MATCH EXISTING
- CO3 GC TO EXAMINE ALL EXISTING STONE CLADDING AND REMOVE ALL LOOSE SCALING MATERIAL, THEN SEAL THE FACADE TO MINIMIZE WATER INFILTRATION. SEALANT TYPE: - SILANE/SILOXANE, OR SIMILAR

LEGEND: ELEVATIONS

- WXY WINDOW TAG. SEE A001 & A002 FOR WINDOW SCHEDULES
- FXX FINISHES TAG
- DOOR TAG. SEE A003 DOOR SCHEDULE
- CX CONSTRUCTION KEYNOTE

LEGEND: FINISHES

- F01 NEW NORDIC GREEN PATINATED COPPER
- F02 NEW SLATE SHINGLES

RECEIVED
HAP31
2025-MAR-04
Community & Cultural Planning

THIBODEAU
ARCHITECTURE-DESIGN

OC3
ENGINEERING

m3
MECHANICAL CONSULTANTS

rjc
Creative Thinking
Practical Results
Read, Jones Christoffersen Ltd.

agile
PROPERTY MANAGEMENT

1	25-MAR-24	REV FOR HERITAGE IP	D
2	25-MAR-24	REV FOR HERITAGE IP	D
3	25-MAR-24	REV FOR HERITAGE IP	C
4	25-MAR-24	REV FOR HERITAGE IP	C
5	25-MAR-24	REV FOR HERITAGE IP	C
6	25-MAR-24	REV FOR HERITAGE IP	C
7	25-MAR-24	REV FOR HERITAGE IP	C
8	25-MAR-24	REV FOR HERITAGE IP	C
9	25-MAR-24	REV FOR HERITAGE IP	C
10	25-MAR-24	REV FOR HERITAGE IP	C

IBC-1353/ON-194984
NAINAIMO COURTHOUSE REHABILITATION
35 FRONT STREET,
NAINAIMO BC - V9R 5J1

PROJECT NUMBER: IBC-1353

PROJECT TITLE: HERITAGE BUILDING ELEVATIONS - CONSTRUCTION

DATE: 24-03-25
DRAWN BY: AS SHOWN
CHECKED BY: BJB
PROJECT NO.: PK Rev no. 01

Project: IBC-1353/ON-194984 - Nainaimo Courthouse Rehabilitation
 Drawing: IBC-1353/ON-194984 - Nainaimo Courthouse Rehabilitation - Elevations - Construction
 Date: 24-03-25
 Drawn by: AS SHOWN
 Checked by: BJB
 Project No: PK Rev no. 01