

# ATTACHMENT D BUILDING ELEVATIONS & DETAILS



**Proposed Height Variance**

1 North Elevation  
A301 Scale: 1:100

Facing internally to the site



2 West Elevation  
A301 Scale: 1:100

Facing plaza

MATERIAL PALETTE			
1	VERTICAL BOARD AND BATTEN CEMENT PANEL SIDING LIGHT GREY	14	ALUMINIUM CURTAINWALL SYSTEM, IN BLACK
2	VERTICAL PLANK CEMENT PANEL SIDING LIGHT GREY PERFORATED SOFFIT, IN DARK GREY	15	ALUMINIUM STOREFRONT GLAZING, IN BLACK
3	PERFORATED SOFFIT, IN DARK GREY	16	ALUMINIUM STOREFRONT DOORS, IN BLACK
4	PERFORATED SOFFIT WOOD-LOOK PLANK, IN DOUGLAS FIR	17	VINYL SWING GLASS DOOR, IN BLACK
5	WOOD-LOOK PLANK CLADDING, IN DOUGLAS FIR	18	VINYL WINDOWS, IN BLACK
6	FIBRE CEMENT PLANK LAP SIDING WOOD GRAIN FINISH, IN DARK GREY	19	CONCRETE WALL, SACK FINISHED, PAINT SEALED
7	FIBRE CEMENT PANEL SIDING, SMOOTH FINISH, IN WHITE	20	LOW SLOPED MEMBRANE ROOF, IN DARK GREY TONES, WITH PARAPET AND CAP FLASHING
8	FIBRE CEMENT PANEL SIDING, SMOOTH FINISH, IN LIGHT GRAY	21	FASCIA, FIBRE CEMENT PANEL SIDING, WITH ALUMINIUM CAP FLASHING COLOUR TO MATCH FASCIA.
9	VINYL DECKING, LIGHT GREY TONES	22	SIGNAGE
10	FASCIA MOUNTED ALUMINIUM GUARDRAIL AND RAILING POWDER COATED, BLACK, WITH CLEAR GLASS INFILL VISION PANELS	23	PLANTERS, REFER TO LANDSCAPE ARCHITECT PACKAGE
11	COLUMNS, COLOUR TO MATCH DARK GREY	24	ELEVATOR OVER-RUN
12	LOW SLOPED MEMBRANE DECK, IN DARK GREY TONES.	25	MECHANICAL ROOM
13		26	PARKADE OVERHEAD DOOR, PICKET STYLE, IN BLACK
		27	STEEL DOOR, IN BLACK
		28	STONE
		29	WOOD STRUCTURE

\* NOTE: FLASHING TO COLOUR MATCH MATERIALS  
\* NOTE: ILLUSTRATED BUILDING SIGNAGE IS PLACEHOLDER AND IS TO BE CONFIRMED IN A SEPARATE SIGNAGE APPLICATION TO MEET CITY OF NANAIMO SIGNAGE REQUIREMENTS

RECEIVED  
DP1355  
2025-JAN-08  
Current Planning

Date	Issue	Description	Site Plan/View
24-12-20	ISSUED FOR DP RESUBMISSION		
24-09-04	ISSUED FOR DP		
24-05-23	ISSUED BY		Site Plan/View
1-180	ISSUED BY		GTH
2406			

NOTE: All dimensions are shown in millimeters.

5730 TURNER  
5730 Turner Road  
Nanaimo, BC  
North and West  
Elevations - Residential

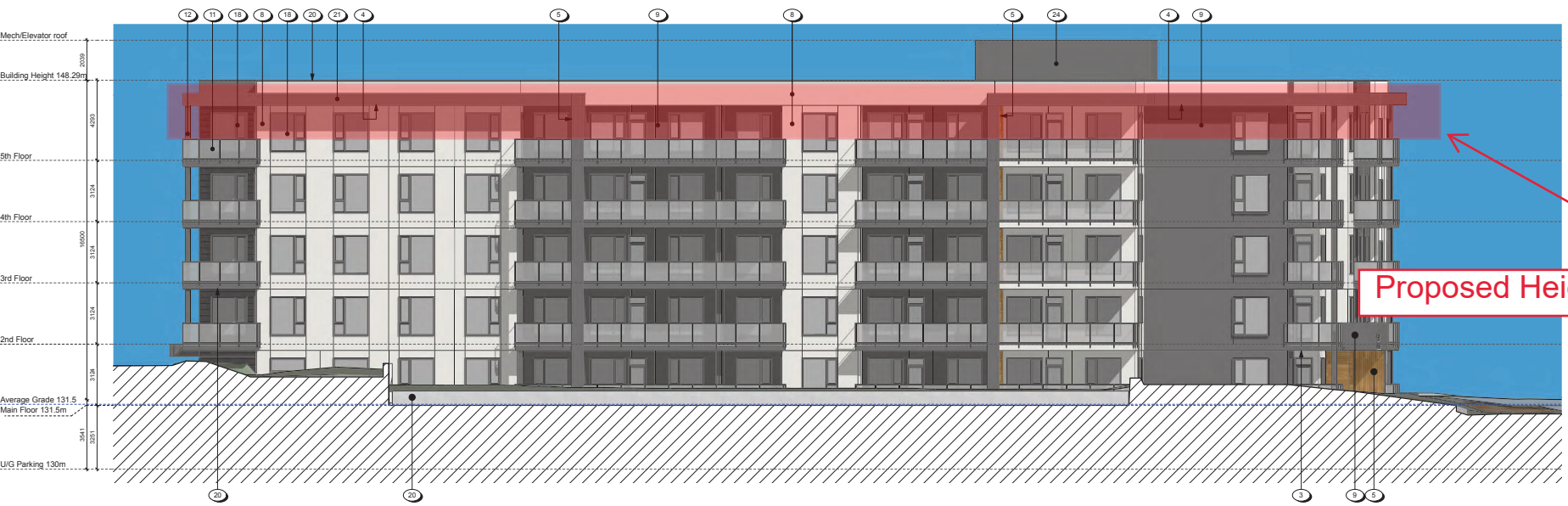
dHka A301

2024-12-20

RECEIVED ARCHITECTURAL DEPARTMENT NANAIMO BC

dHkArchitects  
Victoria  
577 East Street V8V 3K3 T 1-250-658-3367  
Nanaimo  
430-5193 Dublin Way V8T 2K6 T 1-250-585-5810

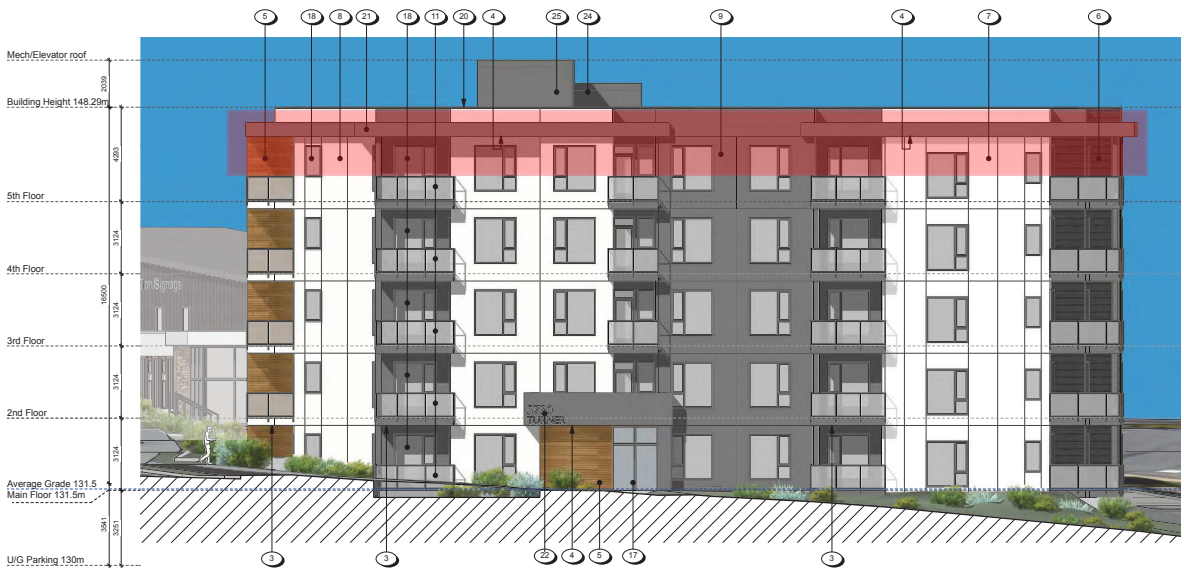
COPYRIGHT RESERVED. THESE PLANS AND DESIGN ARE AND AT ALL TIMES REMAIN THE PROPERTY OF dHkARCHITECTS TO BE USED FOR THE PROJECT SYSTEM AND MAY NOT BE REPRODUCED WITHOUT WRITTEN CONSENT.



Proposed Height Variance

1 South Elevations  
Scale: 1:100

Facing Turner Road (South)



**MATERIAL PALETTE**

1	VERTICAL BOARD AND BATTEN CEMENT PANEL SIDING DARK GREY	14	ALUMINUM CURTAINWALL SYSTEM, IN BLACK
2	VERTICAL PLANK CEMENT PANEL SIDING LIGHT GREY	15	ALUMINUM STOREFRONT GLAZING, IN BLACK
3	PERFORATED SOFFIT, IN DARK GREY	16	ALUMINUM STOREFRONT DOORS, IN BLACK
4	PERFORATED SOFFIT WOOD-LOOK PLANK, IN DOUGLAS FIR	17	VINYL SWING GLASS DOOR, IN BLACK
5	WOOD-LOOK PLANK CLADDING, IN DOUGLAS FIR	18	VINYL WINDOWS, IN BLACK
6	FIBRE CEMENT PLANK LAP SIDING, WOOD GRAIN FINISH, IN DARK GREY	19	CONCRETE WALL, SACK FINISHED, PAINT SEALED
7	FIBRE CEMENT PANEL SIDING, SMOOTH FINISH, IN WHITE	20	LOW SLOPED MEMBRANE ROOF, IN DARK GREY TONES, WITH PARAPET AND CAP FLASHING
8	FIBRE CEMENT PANEL SIDING, SMOOTH FINISH, IN LIGHT GRAY	21	FASCIA: FIBRE CEMENT PANEL SIDING, WITH ALUMINUM CAP FLASHING COLOUR TO MATCH FASCIA.
9	FIBRE CEMENT PANEL SIDING, SMOOTH FINISH, IN DARK GRAY	22	SIGNAGE
10	VINYL DECKING, LIGHT GREY TONES	23	PLANTERS, REFER TO LANDSCAPE ARCHITECT PACKAGE
11	FASCIA-MOUNTED ALUMINUM GUARDRAIL AND RAILING, POWDER COATED, BLACK, WITH CLEAR GLASS INFILL VISION PANELS	24	ELEVATOR OVER-RUN
12	COLUMNS, COLOUR TO MATCH DARK GREY	25	MECHANICAL ROOM
13	LOW SLOPED MEMBRANE DECK, IN DARK GREY TONES.	26	PANORAMA OVERHEAD DOOR, PICKET STYLE, IN BLACK
		27	STEEL DOOR, IN BLACK
		28	STONE
		29	WOOD STRUCTURE

\* NOTE: FLASHING TO COLOUR MATCH MATERIALS  
\* NOTE: ILLUSTRATED BUILDING SIGNAGE IS PLACEHOLDER AND IS TO BE CONFIRMED IN A SEPARATE SIGNAGE APPLICATION TO MEET CITY OF NANAIMO SIGNAGE REQUIREMENTS

2 East Elevations  
Scale: 1:100

Facing Turner Road (East)

RECEIVED  
DP1355  
2025-JAN-08  
Current Planning

2	24-12-20	ISSUED FOR DP RESUBMISSION	
1	24-09-04	ISSUED FOR DP	

5730 TURNER  
5730 Turner Road  
Nanaimo, BC  
South and East  
Elevations - Residential

dHka A302

2024-12-20

REGISTERED ARCHITECT  
REGISTERED ARCHITECT  
REGISTERED ARCHITECT

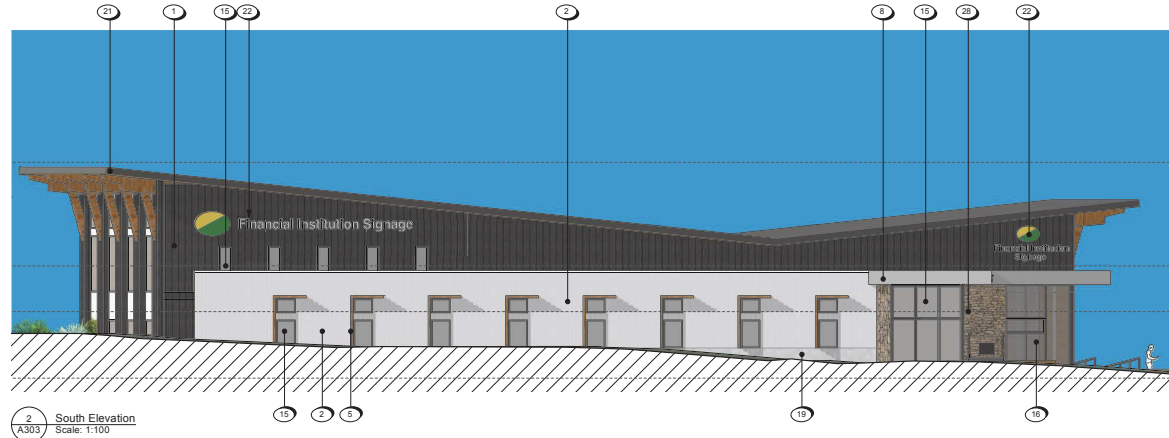
dhkarchitects  
Victoria 577 East Street V8V 3K3 T 1-250-668-3367  
Nanaimo 530-5193 Dublin Way V8T 2K6 T 1-250-685-5810

COPYRIGHT RESERVED. THESE PLANS AND DESIGN ARE AND AT ALL TIMES REMAIN THE PROPERTY OF dhkarchitects TO BE USED FOR THE PROJECT SYSTEM AND NOT TO BE REPRODUCED WITHOUT WRITTEN CONSENT.

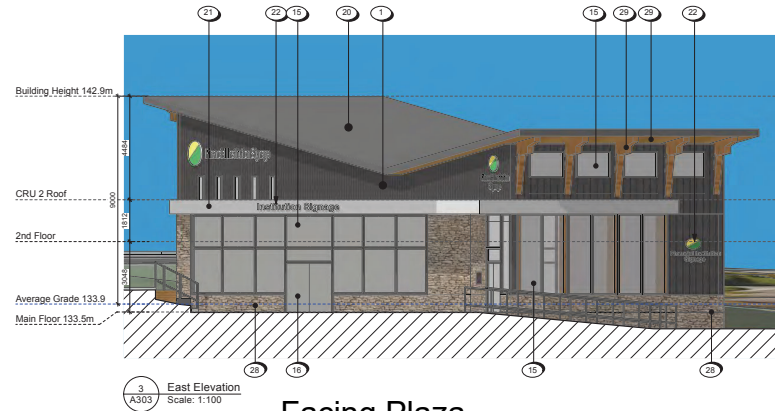




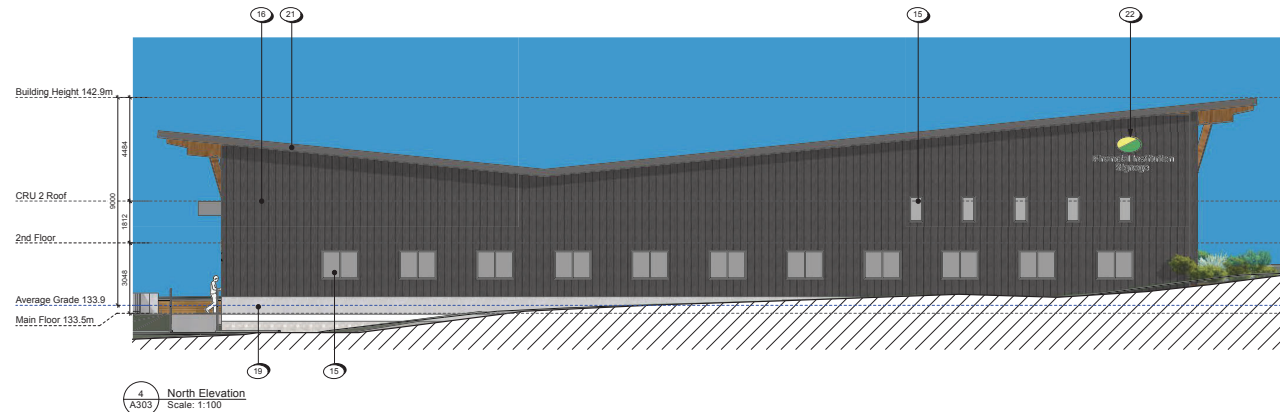
Facing Uplands Drive



Facing Turner Road



Facing Plaza



**MATERIAL PALETTE**

1 VERTICAL BOARD AND BATTEN CEMENT PANEL SIDING DARK GREY	14 ALUMINIUM CURTAINWALL SYSTEM, IN BLACK
2 VERTICAL PLANK CEMENT PANEL SIDING LIGHT GREY	15 ALUMINIUM STOREFRONT GLAZING, IN BLACK
3 PERFORATED SOFFIT, IN DARK GREY	16 ALUMINIUM STOREFRONT DOORS, IN BLACK
4 PERFORATED SOFFIT WOOD-LOCK PLANK, IN DOUGLAS FIR	17 VINYL SWING GLASS DOOR, IN BLACK
5 WOOD-LOCK PLANK CLADDING, IN DOUGLAS FIR	18 VINYL WINDOWS, IN BLACK
6 FIBRE CEMENT FLANK LAP SIDING, WOOD GRAIN FINISH, IN DARK GREY	19 CONCRETE WALL, SACK FINISHED, PAINT SEALED
7 FIBRE CEMENT PANEL SIDING, SMOOTH FINISH, IN WHITE	20 LOW SLOPED MEMBRANE ROOF, IN DARK GREY TONES, WITH PARAPET AND CAP FLASHING
8 FIBRE CEMENT PANEL SIDING, SMOOTH FINISH, IN LIGHT GRAY	21 FASCIA: FIBRE CEMENT PANEL SIDING, WITH ALUMINIUM CAP FLASHING COLOUR TO MATCH FASCIA.
9 VINYL SIDING, LIGHT GREY TONES	22 SIGNAGE
10 FASCIA: MOUNTED ALUMINIUM GUARDRAIL AND RAILING, POWDER COATED, BLACK, WITH CLEAR GLASS INFILL VISION PANELS	23 PLANTERS, REFER TO LANDSCAPE ARCHITECT PACKAGE
11 COLUMNS, COLOUR TO MATCH DARK GREY	24 ELEVATOR OVER-RUN
12 LOW SLOPED MEMBRANE DECK, IN DARK GREY TONES.	25 MECHANICAL ROOM
	26 PARKADE OVERHEAD DOOR, PICKET STYLE, IN BLACK
	27 STEEL DOOR, IN BLACK
	28 STONE
	29 WOOD STRUCTURE

\* NOTE: FLASHING TO COLOUR MATCH MATERIALS  
 \* NOTE: ILLUSTRATED BUILDING SIGNAGE IS PLACEHOLDER AND IS TO BE CONFIRMED IN A SEPARATE SIGNAGE APPLICATION TO MEET CITY OF NANAIMO SIGNAGE REQUIREMENTS

RECEIVED  
 DP1355  
 2025-JAN-08  
 Current Planning

2	24-12-20	ISSUED FOR DP RESUBMISSION
1	24-09-04	ISSUED FOR DP
Rev	Date	Description
Rev 04	24-05-23	Revised by Site Plan v04
Rev 03	DRS	Checked by GTH
Rev 02	1-58	Checked by 2406

NOTE: All dimensions are shown in millimeters.

5730 TURNER  
 5730 Turner Road  
 Nanaimo, BC  
 Elevations - Commercial

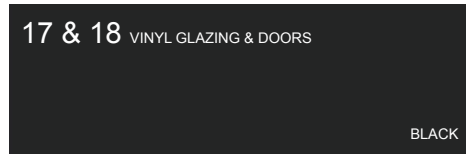
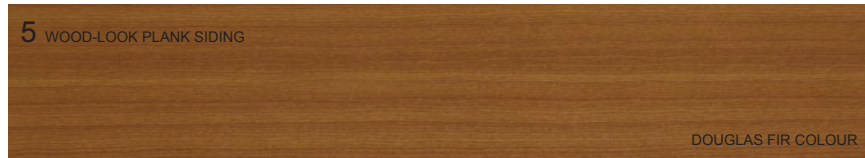
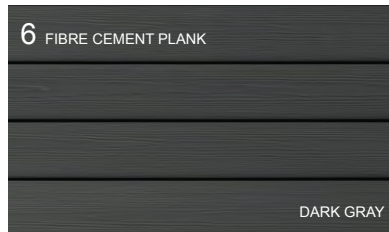
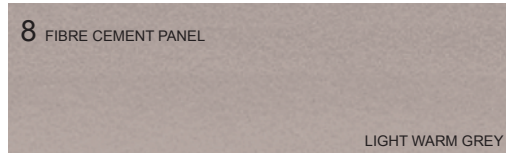
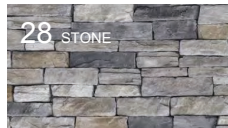
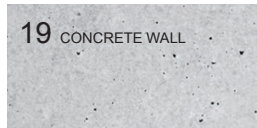
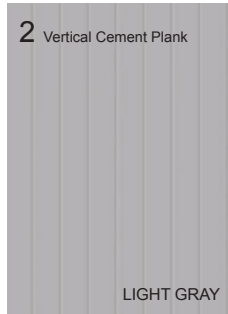
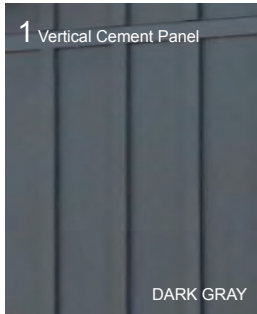
dHka A303

REGISTERED ARCHITECT  
 REGISTERED PLANNING  
 2004-12-20  
 577 East Street V8V 3K3 T 1-250-658-3367  
 Nanaimo BC V8V 3K6 T 1-250-685-5810  
 Copyright Reserved: These Plans and Designs are used at all times under the authority of the Architect to be used for the project herein and may not be reproduced without written consent.

**MATERIAL PALETTE**

- 1 VERTICAL BOARD AND BATTEN CEMENT PANEL SIDING DARK GREY
- 2 VERTICAL PLANK CEMENT PANEL SIDING LIGHT GREY
- 3 PERFORATED SOFFIT, IN DARK GREY
- 4 WOOD-LOOK PLANK, IN DOUGLAS FIR
- 5 WOOD-LOOK PLANK CLADDING, IN DOUGLAS FIR
- 6 FIBRE CEMENT PLANK LAP SIDING, WOOD GRAIN FINISH, IN DARK GREY
- 7 FIBRE CEMENT PANEL SIDING, SMOOTH FINISH, IN WHITE
- 8 FIBRE CEMENT PANEL SIDING, SMOOTH FINISH, IN LIGHT GRAY
- 9 FIBRE CEMENT PANEL SIDING, SMOOTH FINISH, IN DARK GRAY
- 10 VINYL DECKING, LIGHT GREY TONES
- 11 FASCIA MOUNTED ALUMINIUM GUARDRAIL AND RAILING, POWDER COATED, BLACK, WITH CLEAR GLASS INFILL VISION PANELS
- 12 COLUMNS, COLOUR TO MATCH DARK GREY
- 13 LOW SLOPED MEMBRANE DECK, IN DARK GREY TONES
- 14 ALUMINIUM CURTAINWALL SYSTEM, IN BLACK
- 15 ALUMINIUM STOREFRONT GLAZING, IN BLACK
- 16 ALUMINIUM STOREFRONT DOORS, IN BLACK
- 17 VINYL SWING GLASS DOOR, IN BLACK
- 18 VINYL WINDOWS, IN BLACK
- 19 CONCRETE WALL, SACK FINISHED, PAINT SEALED
- 20 LOW SLOPED MEMBRANE ROOF, IN DARK GREY TONES, WITH PARAPET AND CAP FLASHING
- 21 FASCIA, FIBRE CEMENT PANEL SIDING, WITH ALUMINIUM CAP FLASHING COLOUR TO MATCH FASCIA
- 22 SIGNAGE
- 23 PLANTERS, REFER TO LANDSCAPE ARCHITECT PACKAGE
- 24 ELEVATOR OVER-RUN
- 25 MECHANICAL ROOM
- 26 PARKADE OVERHEAD DOOR, PICKET STYLE, IN BLACK
- 27 STEEL DOOR, IN BLACK
- 28 STONE
- 29 WOOD STRUCTURE

\*NOTE: FLASHING TO COLOUR MATCH MATERIALS  
 \*NOTE: ILLUSTRATED BUILDING SIGNAGE IS PLACEHOLDER AND IS TO BE CONFIRMED IN A SEPARATE SIGNAGE APPLICATION TO MEET CITY OF NANAIMO SIGNAGE REQUIREMENTS



**RECEIVED**  
**DP 1355**  
**2025-JAN-08**  
 Current Planning

Date	Description	Issued For
24-12-20	ISSUED FOR DP RESUBMISSION	
24-09-04	ISSUED FOR DP	

Date	Description	Site Plan	Drawn By	Checked By	QTH
24-09-03	ISSUED FOR DP		DHS		
1-18-00	ISSUED FOR DP				2406

**5730 TURNER**  
 5730 Turner Road  
 Nanaimo, BC  
 Material Board

dHka **A402**

2004-12-20  
 REGISTERED ARCHITECTS  
 REGISTERED ARCHITECTS  
 REGISTERED ARCHITECTS

5HK Architects  
 Victoria 377 East Street V8V 3K3 T 1-250-658-3367  
 Nanaimo 430-1193 Dublin Way V8T 2K6 T 1-250-585-5810  
 Copyright Reserved. These Plans and Sections are used at all times under the authority of the architect. No part of these Plans and Sections may be reproduced without written consent.