

ATTACHMENT G SHADOW STUDY

Nanaimo Cancer Centre Shadow Study

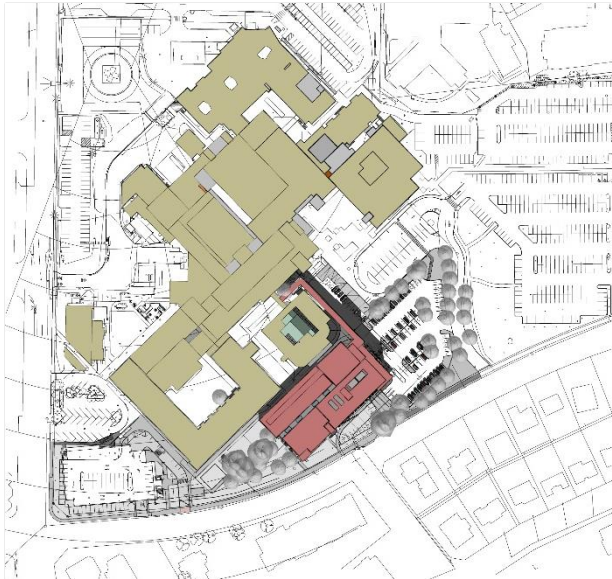
March 21st at 9:00am



September 23rd at 9:00am



March 21st at 12:00pm

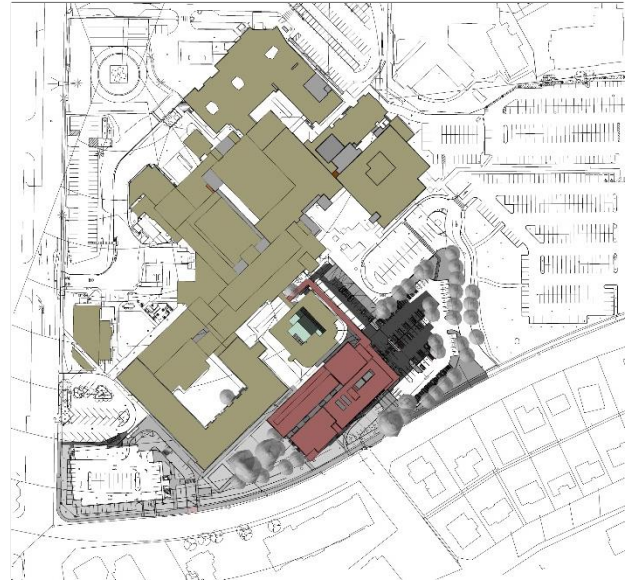
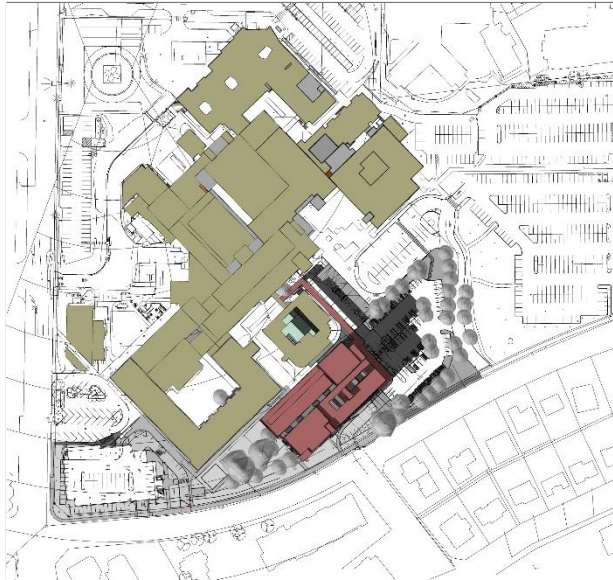




September 23rd at 12:00pm



March 21st at 3:00pm

September 23rd at 3:00pm



-  Existing buildings
-  Proposed building

Shadow Impact

- The shadows cast from this development are largest in the Spring months.
- The shadows throughout the day are cast largest in the morning.
- The shadows are cast less in the afternoon as the sun is higher.
- There appears to be little shadows cast onto the Ambulatory Care building and Palliative Care Unit.
- The entry to the new Cancer Centre gains some early morning sun and throughout the day is shaded, which will help solar heat gain and increase efficiency on mechanical systems for cooling.

RECEIVED
DVP473
2024-NOV-26
Current Planning
2