

ATTACHMENT D BUILDING ELEVATIONS AND DETAILS



1 Chapel Street Elevation
Scale: 3/32" = 1'-0"

Facing Chapel Street

MATERIAL PALETTE

- 1 FIBRE CEMENT PANEL SIDING, IN "ARCTIC WHITE" COLOUR
- 2 FIBRE CEMENT PANEL SIDING, IN "IRON GREY" COLOUR
- 3 FIBRE CEMENT PANEL SIDING, IN "GREY SLATE" COLOUR
- 4 FIBRE CEMENT PANEL SIDING, IN "LIGHT MIST" COLOUR
- 5 WOOD-LOOK SIDING IN "TBD" COLOUR
- 6 WOOD-LOOK FINIS IN "TBD" COLOUR
- 7 LOW SLOPE MEMBRANE ROOF, IN DARK GREY TONES
- 8 FIBRE-CEMENT PANEL FASCIA, SMOOTH TEXTURE, IN "IRON GREY", WITH ALUMINUM CAP FLASHING IN IRON GREY
- 9 SOFFIT: WOOD-LOOKIN "TBD" COLOUR
- 10 CAST-IN-PLACE CONCRETE WALL AND COLUMNS, SACK FINISHED, PAINT SEALED
- 11 CAST-IN-PLACE CONCRETE WALL, HORIZONTAL CEDAR LINER FINISHED, PAINT SEALED
- 12 METAL SIDING IN "ARCTIC WHITE" COLOUR
- 13 ALUMINUM STORE FRONT GLAZING, IN "IRON GREY"
- 14 ALUMINUM STORE FRONT WINDOWS IN "IRON GREY"
- 15 ALUMINUM STORE FRONT DOORS, IN "IRON GREY", WITH CLEAR TEMPERED GLASS INFILL PANELS
- 16 VINYL WINDOWS, IN "IRON GREY"
- 17 VINYL SLIDING GLASS DOORS, IN "IRON GREY"
- 18 VINYL SWING GLASS DOOR, IN "IRON GREY"
- 19 VINYL SWING DOOR, IN "IRON GREY", WITH TRANSOM GLAZING ABOVE (ENTRY @ WALKWAY, TBC)
- 20 STEEL DOOR, IN "GREY SLATE"
- 21 GUARDRAIL HEIGHT PARAPET WALLS, WITH 1 FIBRE CEMENT PANEL SIDING, IN "ARCTIC WHITE" COLOUR
- 22 GUARDRAIL HEIGHT PARAPET WALLS, WITH 2 FIBRE CEMENT PANEL SIDING, IN "IRON GREY" COLOUR
- 23 ALUMINUM RAILING AND GUARDRAILS, IN "IRON GREY" FINISH, WITH FROSTED TEMPERED GLASS PANELS
- 24 PRIVACY SCREEN: WOOD-LOOK METAL FINIS
- 25 BALCONIES WITH VINYL DECKING, IN LIGHT GREY
- 26 GARAGE O/H DOOR, OPEN PICKET STYLE, IN "IRON GREY"
- 27 METAL SIDING IN "LIGHT MIST" COLOUR
- 28 STEEL DOOR, IN "LIGHT MIST" COLOUR
- 29 GUARDRAIL HEIGHT PARAPET WALLS, WITH 3 FIBRE CEMENT PANEL SIDING, IN "GRY SLATE" COLOUR
- 30 GUARDRAIL HEIGHT PARAPET WALLS, WITH 4 FIBRE CEMENT PANEL SIDING, IN "LIGHT MIST" COLOUR
- 31 METAL SIDING IN "GREY SLATE" COLOUR
- 32 SOFFIT: VINYL SOFFIT IN "IRON GREY" COLOUR

RECEIVED
DP1350
2024-NOV-12
Current Planning





1 Skinner Street Elevation
A302
Scale: 3/32" = 1'-0"

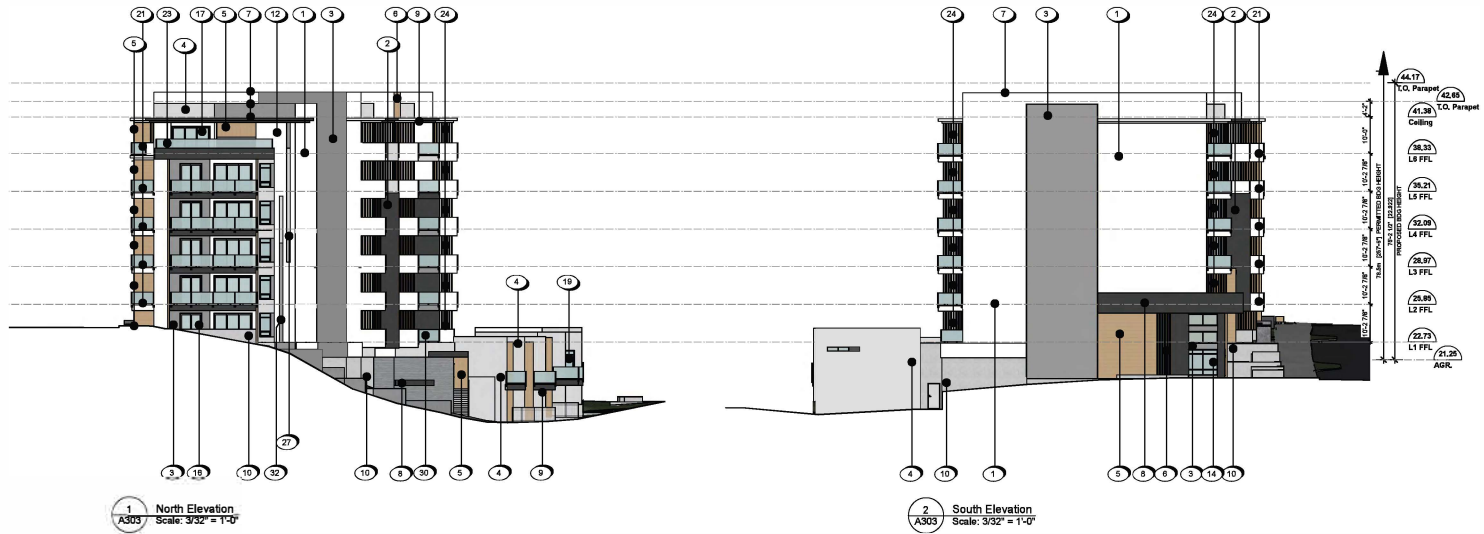
Facing Skinner Street

MATERIAL PALETTE

- 1 FIBRE CEMENT PANEL SIDING, IN "ARCTIC WHITE" COLOUR
- 2 FIBRE CEMENT PANEL SIDING, IN "IRON GREY" COLOUR
- 3 FIBRE CEMENT PANEL SIDING, IN "GREY SLATE" COLOUR
- 4 FIBRE CEMENT PANEL SIDING, IN "LIGHT MIST" COLOUR
- 5 WOOD-LOOK SIDING IN "TBD" COLOUR
- 6 WOOD-LOOK FINIS IN "TBD" COLOUR
- 7 LOW SLOPE MEMBRANE ROOF, IN DARK GREY TONES
- 8 FIBRE-CEMENT PANEL FASCIA, SMOOTH TEXTURE, IN IRON GREY, WITH ALUMINUM CAP FLASHING IN IRON GREY
- 9 SOFFIT, WOOD-LOOK IN "TBD" COLOUR
- 10 CAST-IN-PLACE CONCRETE WALL AND COLUMNS, SACK FINISHED, PAINT SEALED
- 11 CAST-IN-PLACE CONCRETE WALL, HORIZONTAL CEDAR LINER FINISHED, PAINT SEALED
- 12 METAL SIDING IN "ARCTIC WHITE" COLOUR
- 13 ALUMINUM STORE FRONT GLAZING, IN "IRON GREY"
- 14 ALUMINUM STORE FRONT WINDOWS IN "IRON GREY"
- 15 ALUMINUM STORE FRONT DOORS, IN "IRON GREY", WITH CLEAR TEMPERED GLASS INFILL PANELS
- 16 VINYL WINDOWS, IN "IRON GREY"
- 17 VINYL SLIDING GLASS DOORS, IN "IRON GREY"
- 18 VINYL SWING GLASS DOOR, IN "IRON GREY"
- 19 VINYL SWING DOOR, IN "IRON GREY", WITH TRANSOM GLAZING ABOVE (ENTRY @ WALKWAY, TBQ)
- 20 STEEL DOOR, IN "GREY SLATE"
- 21 GUARDRAIL HEIGHT PARAPET WALLS, WITH 1 FIBRE CEMENT PANEL SIDING, IN "ARCTIC WHITE" COLOUR
- 22 GUARDRAIL HEIGHT PARAPET WALLS, WITH 2 FIBRE CEMENT PANEL SIDING, IN "IRON GREY" COLOUR
- 23 ALUMINUM RAILING AND GUARDRAILS, IN "IRON GREY" FINISH, WITH FROSTED TEMPERED GLASS PANELS
- 24 PRIVACY SCREEN, WOOD-LOOK METAL FINIS
- 25 BALCONIES WITH VINYL DECKING, IN LIGHT GREY
- 26 GARAGE OH DOOR, OPEN PICKET STYLE, IN "IRON GREY"
- 27 METAL SIDING IN "LIGHT MIST" COLOUR
- 28 STEEL DOOR, IN "LIGHT MIST" COLOUR
- 29 GUARDRAIL HEIGHT PARAPET WALLS, WITH 3 FIBRE CEMENT PANEL SIDING, IN "GRAY SLATE" COLOUR
- 30 GUARDRAIL HEIGHT PARAPET WALLS, WITH 4 FIBRE CEMENT PANEL SIDING, IN "LIGHT MIST" COLOUR
- 31 METAL SIDING IN "GREY SLATE" COLOUR
- 32 SOFFIT VINYL SOFFIT IN "IRON GREY" COLOUR

RECEIVED
DP1350
2024-NOV-12
Urban Planning





1 North Elevation
Scale: 3/32" = 1'-0"

2 South Elevation
Scale: 3/32" = 1'-0"

MATERIAL PALETTE

- 1 FIBRE CEMENT PANEL SIDING, IN "ARCTIC WHITE" COLOUR
- 2 FIBRE CEMENT PANEL SIDING, IN "IRON GREY" COLOUR
- 3 FIBRE CEMENT PANEL SIDING, IN "GREY SLATE" COLOUR
- 4 FIBRE CEMENT PANEL SIDING, IN "LIGHT MIST" COLOUR
- 5 WOOD-LOOK SIDING IN "TBD" COLOUR
- 6 WOOD-LOOK FINIS IN "TBD" COLOUR
- 7 LOW SLOPE MEMBRANE ROOF, IN DARK GREY TONES
- 8 FIBRE-CEMENT PANEL FASCIA, SMOOTH TEXTURE, IN "IRON GREY", WITH ALUMINUM CAP FLASHING IN IRON GREY
- 9 SOFFIT: WOOD-LOOK IN "TBD" COLOUR
- 10 CAST-IN-PLACE CONCRETE WALL AND COLUMNS, SACK FINISHED, PAINT SEALED
- 11 CAST-IN-PLACE CONCRETE WALL, HORIZONTAL CEDAR LINER FINISHED, PAINT SEALED
- 12 METAL SIDING IN "ARCTIC WHITE" COLOUR
- 13 ALUMINIUM STORE FRONT GLAZING, IN "IRON GREY"
- 14 ALUMINIUM STORE FRONT WINDOWS IN "IRON GREY"
- 15 ALUMINIUM STORE FRONT DOORS, IN "IRON GREY", WITH CLEAR TEMPERED GLASS INFILL PANELS
- 16 VINYL WINDOWS, IN "IRON GREY"
- 17 VINYL SLIDING GLASS DOORS, IN "IRON GREY"
- 18 VINYL SWING GLASS DOOR, IN "IRON GREY"
- 19 VINYL SWING DOOR, IN "IRON GREY", WITH TRANSOM GLAZING ABOVE (ENTRY @ WALKWAY, TBD)
- 20 STEEL DOOR, IN "GREY SLATE"
- 21 GUARDRAIL HEIGHT PARAPET WALLS, WITH 1 FIBRE CEMENT PANEL SIDING, IN "ARCTIC WHITE" COLOUR
- 22 GUARDRAIL HEIGHT PARAPET WALLS, WITH 2 FIBRE CEMENT PANEL SIDING, IN "IRON GREY" COLOUR
- 23 ALUMINIUM RAILING AND GUARDRAILS, IN "IRON GREY" FINISH, WITH FROSTED TEMPERED GLASS PANELS
- 24 PRIVACY SCREEN: WOOD-LOOK METAL FINIS
- 25 BALCONIES WITH VINYL DECKING, IN LIGHT GREY
- 26 GARAGE CAR DOOR, OPEN PICKET STYLE, IN "IRON GREY"
- 27 METAL SIDING IN "LIGHT MIST" COLOUR
- 28 STEEL DOOR, IN "LIGHT MIST" COLOUR
- 29 GUARDRAIL HEIGHT PARAPET WALLS, WITH 3 FIBRE CEMENT PANEL SIDING, IN "GREY SLATE" COLOUR
- 30 GUARDRAIL HEIGHT PARAPET WALLS, WITH 4 FIBRE CEMENT PANEL SIDING, IN "LIGHT MIST" COLOUR
- 31 METAL SIDING IN "GREY SLATE" COLOUR
- 32 SOFFIT: VINYL SOFFIT IN "IRON GREY" COLOUR

RECEIVED
DP1350
2024-NOV-12
Current Planning

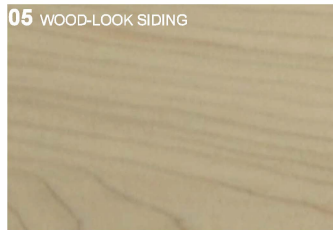
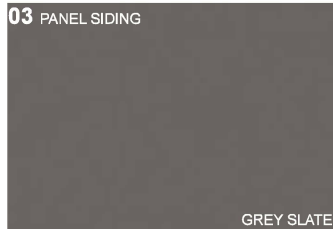


77 Chapel Street

Nanaimo, BC
07Nov24

Side Elevations A303

dH architects dH.ca



MATERIAL PALETTE

- ① FIBRE CEMENT PANEL SIDING, IN "ARCTIC WHITE" COLOUR
- ② FIBRE CEMENT PANEL SIDING, IN "IRON GREY" COLOUR
- ③ FIBRE CEMENT PANEL SIDING, IN "GREY SLATE" COLOUR
- ④ FIBRE CEMENT PANEL SIDING, IN "LIGHT MIST" COLOUR
- ⑤ WOOD-LOOK SIDING IN "TBD" COLOUR
- ⑥ WOOD-LOOK FINIS IN "TBD" COLOUR
- ⑦ LOW SLOPE MEMBRANE ROOF, IN DARK GREY TONES
- ⑧ FIBRE-CEMENT PANEL FASCIA, SMOOTH TEXTURE, IN "IRON GREY", WITH ALUMINUM CAP FLASHING IN IRON GREY
- ⑨ SOFFIT: WOOD-LOOK IN "TBD" COLOUR
- ⑩ CAST-IN-PLACE CONCRETE WALL AND COLUMNS, SACK FINISHED, PAINT SEALED
- ⑪ CAST-IN-PLACE CONCRETE WALL, HORIZONTAL CEDAR LINER FINISHED, PAINT SEALED
- ⑫ METAL SIDING IN "ARCTIC WHITE" COLOUR
- ⑬ ALUMINUM STORE FRONT GLAZING, IN "IRON GREY"
- ⑭ ALUMINUM STORE FRONT WINDOWS IN "IRON GREY"
- ⑮ ALUMINUM STORE FRONT DOORS, IN "IRON GREY", WITH CLEAR TEMPERED GLASS INFILL PANELS
- ⑯ VINYL WINDOWS, IN "IRON GREY"
- ⑰ VINYL SLIDING GLASS DOORS, IN "IRON GREY"
- ⑱ VINYL SWING GLASS DOOR, IN "IRON GREY"
- ⑲ VINYL SWING DOOR, IN "IRON GREY", WITH TRANSOM GLAZING ABOVE (ENTRY @ WALKWAY, TBD)
- ⑳ STEEL DOOR, IN "GREY SLATE"
- ㉑ GUARDRAIL HEIGHT PARAPET WALLS, WITH ① FIBRE CEMENT PANEL SIDING, IN "ARCTIC WHITE" COLOUR
- ㉒ GUARDRAIL HEIGHT PARAPET WALLS, WITH ② FIBRE CEMENT PANEL SIDING, IN "IRON GREY" COLOUR
- ㉓ ALUMINUM RAILING AND GUARDRAILS, IN "IRON GREY" FINISH, WITH FROSTED TEMPERED GLASS PANELS
- ㉔ PRIVACY SCREEN: WOOD-LOOK METAL FINIS
- ㉕ BALCONIES WITH VINYL DECKING, IN LIGHT GREY
- ㉖ GARAGE OH DOOR, OPEN PICKET STYLE, IN "IRON GREY"
- ㉗ METAL SIDING IN "LIGHT MIST" COLOUR
- ㉘ STEEL DOOR, IN "LIGHT MIST" COLOUR
- ㉙ GUARDRAIL HEIGHT PARAPET WALLS, WITH ③ FIBRE CEMENT PANEL SIDING, IN "GREY SLATE" COLOUR
- ㉚ GUARDRAIL HEIGHT PARAPET WALLS, WITH ④ FIBRE CEMENT PANEL SIDING, IN "LIGHT MIST" COLOUR
- ㉛ METAL SIDING IN "GREY SLATE" COLOUR
- ㉜ SOFFIT: VINYL SOFFIT IN "IRON GREY" COLOUR

RECEIVED
DP1350
2024-NOV-12
Current Planning



77 Chapel Street

Nanaimo, BC
07Nov24

Material Palette A801

dHArchitects dHKA