

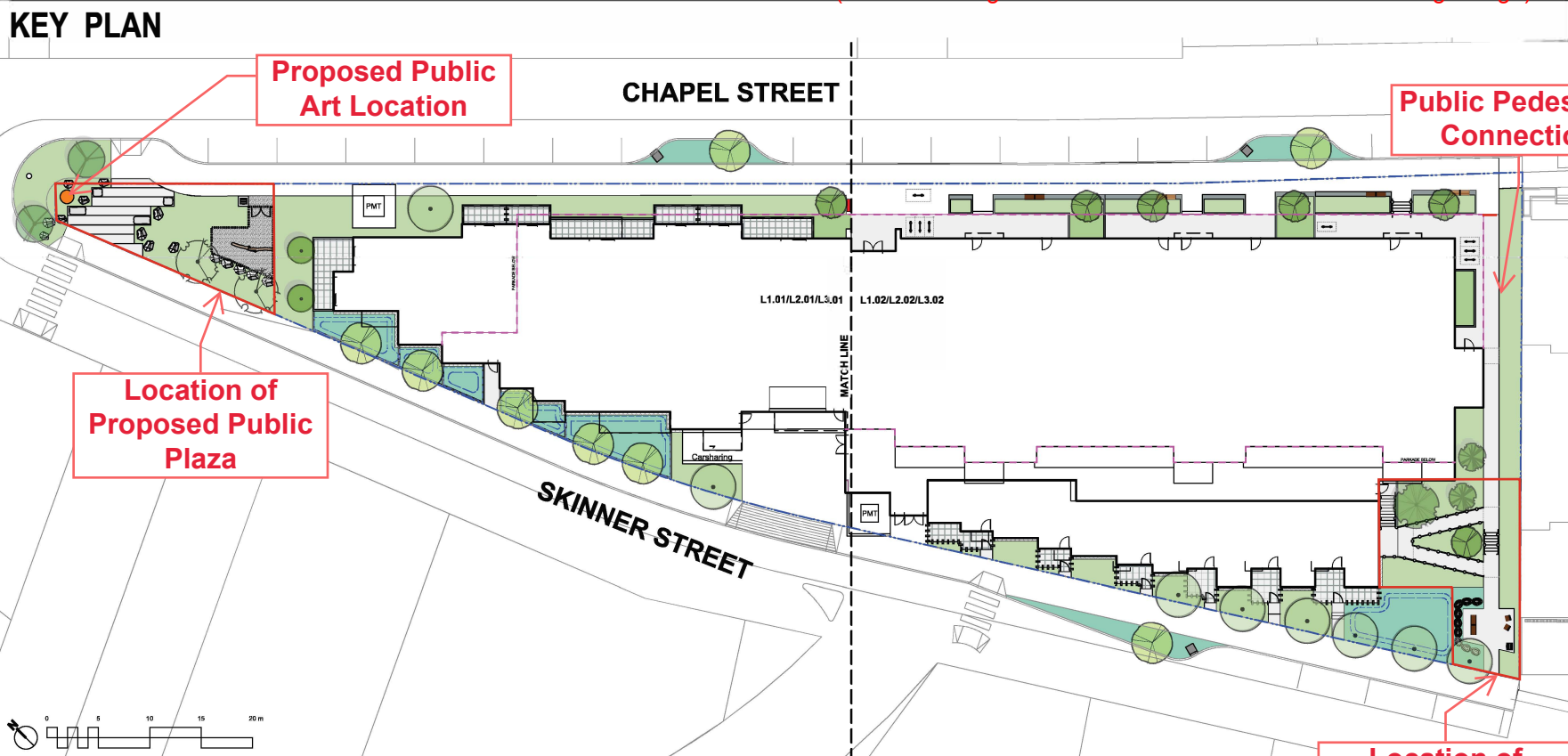
ATTACHMENT F LANDSCAPE PLAN AND DETAILS

Primex Investments Ltd.
77 Chapel Street
Nanaimo, British Columbia

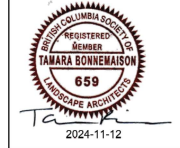
| Landscape Sheets | |
|------------------|------------------------------|
| Sheet No. | Sheet Title |
| L0.00 | Cover |
| L0.01 | General Information Sheet |
| L0.02 | Tree Removal Plan |
| L0.03 | Stormwater Management |
| L1.01 | Landscape Materials |
| L1.02 | Landscape Materials |
| L2.01 | Landscape Grading & Drainage |
| L2.02 | Landscape Grading & Drainage |
| L2.03 | Landscape Elevations |
| L3.01 | Planting |
| L3.02 | Planting |



NOTFORCONSTRUCTION



| No. | Issued For | Issue Date |
|-----|-----------------|------------|
| 2 | DP Resubmission | 2024-11-12 |
| 1 | DP Submission | 2024-07-22 |



Primex Investments Ltd.
1758 W 4th Ave #200
Vancouver, BC

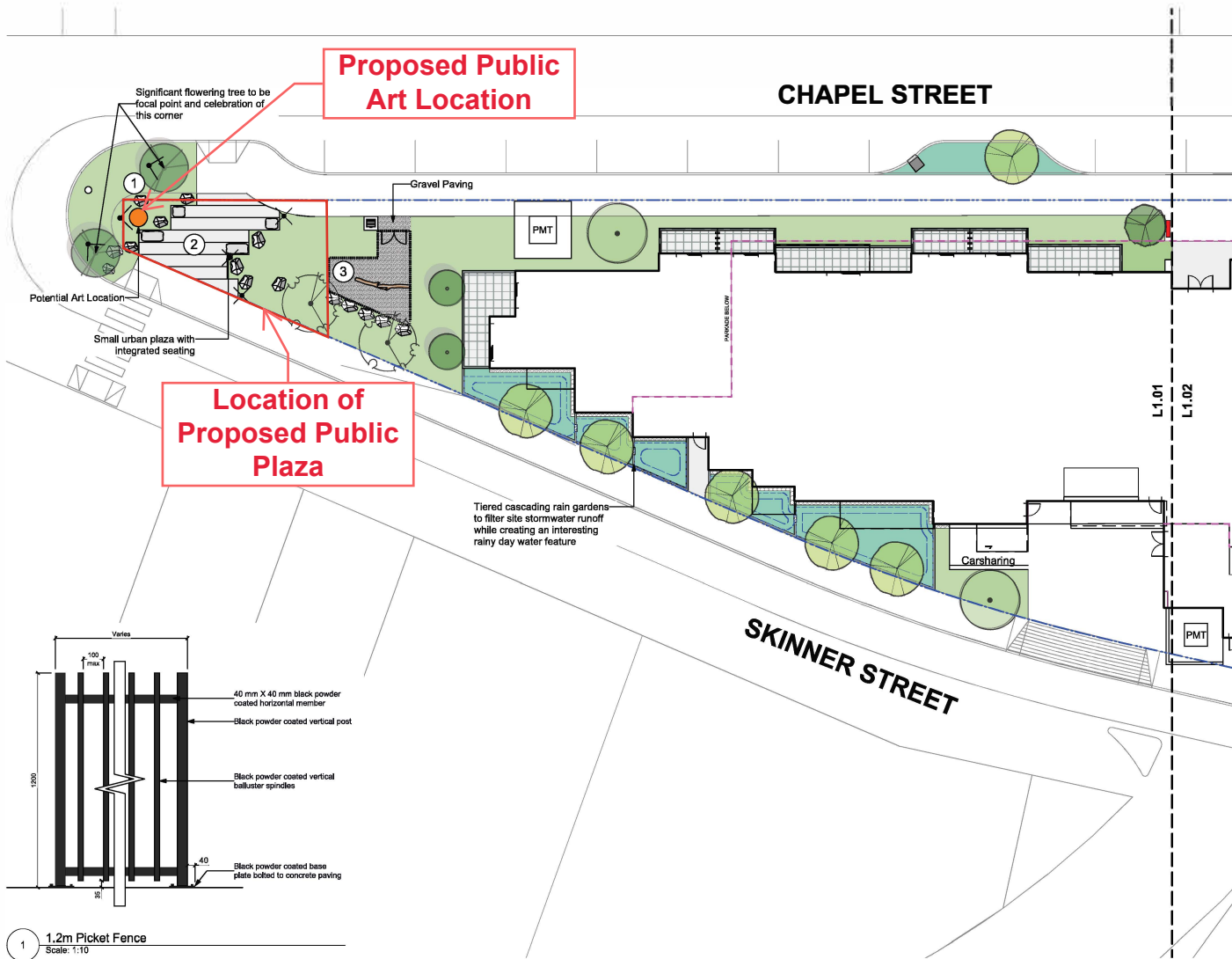
project
77 Chapel Street
77 Chapel Street
Nanaimo, BC

sheet title
Cover

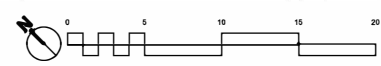
RECEIVED
DP1350
2024-NOV-12
CURIAL PLANNING

project no. 124.09
scale 1:200 @ 24"x36"
drawn by MDI
checked by SM

sheet no. **L0.00**



| MATERIALS LEGEND | |
|----------------------------|--|
| | Municipal Sidewalk (for reference only) |
| | Asphalt Paving - Road / Drive Aisle / Parking (for reference only) |
| HARDSCAPE SURFACES | |
| | Concrete Paving Cast in place, light brown finish. Sawcut control joints. |
| | Unit Paver - Type 1 |
| | Unit Paver - Type 2 |
| STEPS, RAMPS, CURBS, WALLS | |
| | Retaining Wall - Concrete |
| | Seat Wall - Concrete |
| | Wall - Concrete |
| | Landscape Boulder |
| | Rock Retention |
| | Stairs with Handrail To meet BCBC requirements |
| | Ramp with Handrail To meet BCBC requirements |
| FENCING & RAILS | |
| | Handrail To meet BCBC Requirements |
| | Picket Fence 1200mm height |
| | Picket Fence Gate 1200mm height |
| SITE FURNISHINGS | |
| | Bike Rack |
| | Bench - Backless with Armrest |
| | Chair |
| | Waste Receptacle |
| | Ash Receptacle |
| | Stone Seating |
| | Planter - Metal |
| | Light Bollard |
| | Uplight |
| SOFTSCAPE | |
| | Planting Area - Tree & Shrub -On Grade -450mm Depth -Shrub Growing Medium. |
| | Planting Area - Tree & Shrub -On Slab Depth: Varies, See Plan -Type 1P growing medium. Corolla maximum depth allowable as per Stocked Growings |
| | Planting Area -Rain Garden -On Grade -450mm Depth -Rain Garden Growing Medium. |
| | Gravel Maintenance Edge -150 mm Depth, 300 mm Width -Max gravel size 25mm (1"). |



| No. | Issued For | Issue Date |
|-----|-----------------|------------|
| 2 | DP Resubmission | 2024-11-12 |
| 1 | DP Submission | 2024-07-22 |



client
Primex Investments Ltd.
1758 W 4th Ave #200
Vancouver, BC

project
77 Chapel Street
77 Chapel Street
Nanaimo, BC

sheet title
Landscape Materials

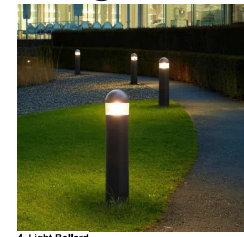
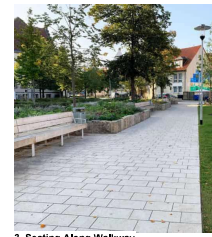
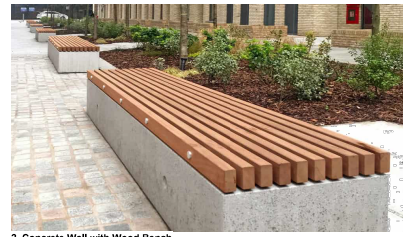
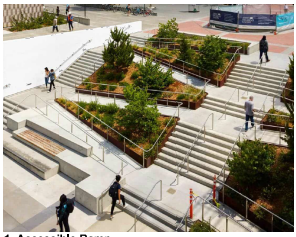
RECEIVED
DP1350
2024-NOV-12
Surrey, BC

project no. 124.09
scale: 1:150 @ 24"x36"
drawn by MDI
checked by SM

sheet no. **L1.01**



| MATERIALS LEGEND | |
|----------------------------|---|
| | Municipal Sidewalk (for reference only) |
| | Asphalt Paving - Road / Drive Aisle / Parking (for reference only) |
| HARDSCAPE SURFACES | |
| | Concrete Paving Cast in place, light broom finish, sawcut control joints. |
| | Unit Paver - Type 1 |
| | Unit Paver - Type 2 |
| STEPS, RAMPS, CURBS, WALLS | |
| | Retaining Wall - Concrete |
| | Seat Wall - Concrete |
| | Weir - Concrete |
| | Landscape Boulder |
| | Rock Retention |
| | Stairs with Handrail To meet BCBC requirements |
| | Ramp with Handrail To meet BCBC requirements |
| FENCING & RAILS | |
| | Handrail To meet BCBC Requirements |
| | Picket Fence 1200mm height |
| | Picket Fence Gate 1200mm height |
| SITE FURNISHINGS | |
| | Bike Rack |
| | Bench - Backless with Armrest |
| | Chair |
| | Waste Receptacle |
| | Ash Receptacle |
| | Stone Seating |
| | Planter - Metal |
| | Light Bollard |
| | Uplight |
| SOFTSCAPE | |
| | Planting Area - Tree & Shrub - On Grade -450mm Depth -Shrub Growing Medium |
| | Planting Area - Tree & Shrub - On Slab -Shrub Growing Medium -Type 1P growing medium, custom maximum depth allowable as per Structural Drawings |
| | Planting Area - Rain Garden - On Grade -450mm Depth -Rain Garden Growing Medium |
| | Gravel Maintenance Edge -150 mm Depth, 300 mm Width -Max gravel size 25mm (1") |



1. Accessible Ramp 2. Concrete Wall with Wood Bench 3. Seating Along Walkway 4. Light Bollard



| No. | Issued For | Issue Date |
|-----|-----------------|------------|
| 2 | DP Resubmission | 2024-11-12 |
| 1 | DP Submission | 2024-07-22 |



client
Primex Investments Ltd.
 1758 W 4th Ave #200
 Vancouver, BC

project
 77 Chapel Street
 77 Chapel Street
 Nanaimo, BC

sheet title

Landscape Materials

RECEIVED
DP1350
2024-NOV-12
 LANDSCAPE ARCHITECTS

project no. 124.09
 scale 1:150 @ 24"x36"
 drawn by MDI
 checked by SM
 sheet no.

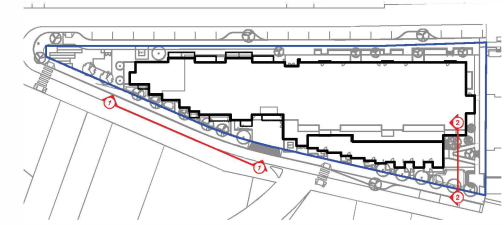
L1.02



1 South Elevation - Stepped Rain Garden
Scale: 1:100



2 Section Elevation - Rain Garden + Ramp
Scale: 1:50



MDS LANDSCAPE ARCHITECTS
1180 Victoria Park W. Suite 200
Vancouver, BC V6J 2R6
Tel: 604-681-1111
www.mdslandscape.com

| No. | Issued For | Issue Date |
|-----|-------------------|------------|
| 2 | DPF Re-submission | 2024-11-12 |
| 1 | DPF Submission | 2024-07-22 |



Client:
Primex Investments Ltd.
1758 W 4th Ave #200
Vancouver, BC

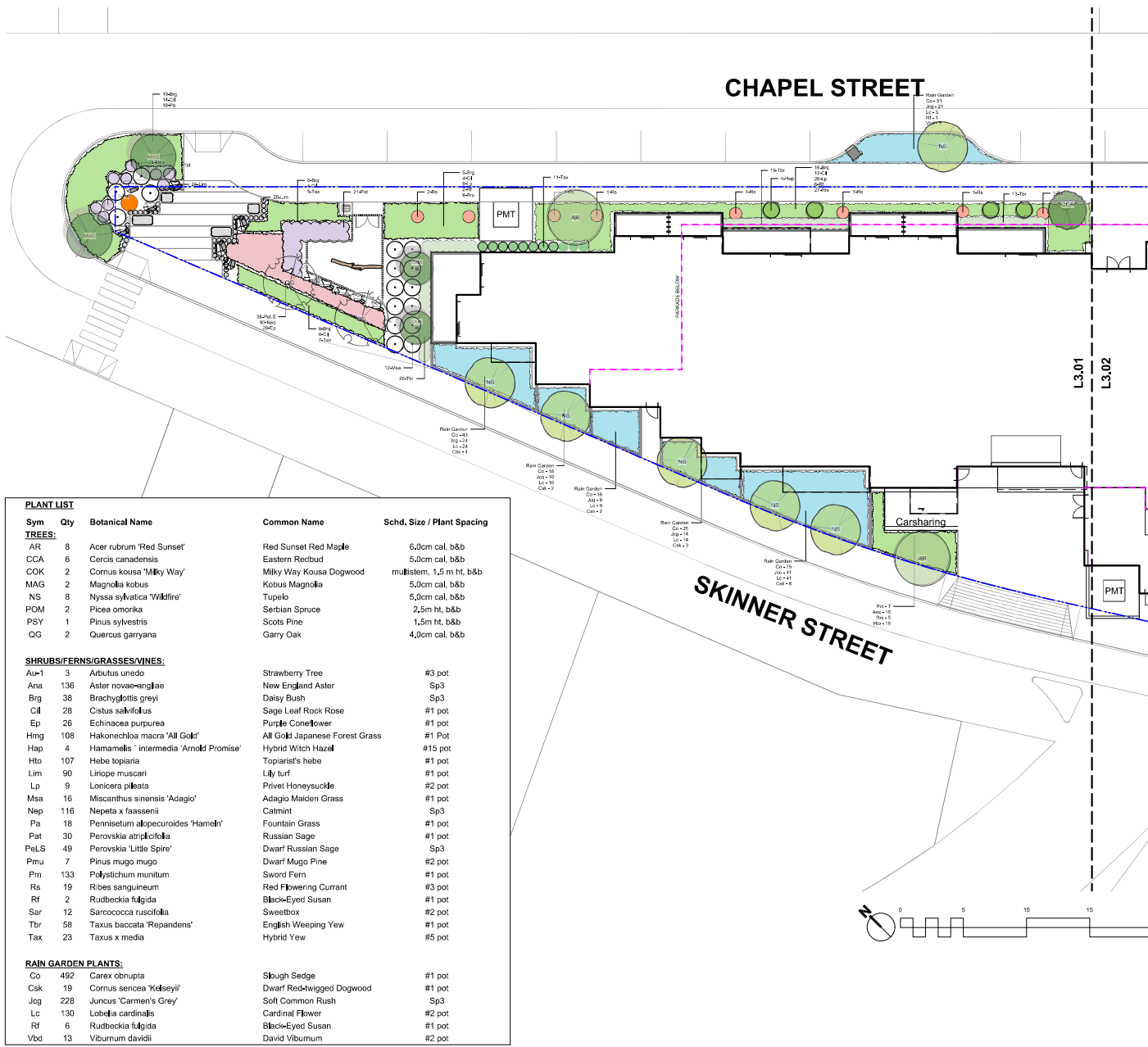
Project:
77 Chapel Street
77 Chapel Street
Nanaimo, BC

Sheet Title:
Landscape Elevations

RECEIVED
DP1350
2024-NOV-12
Current Planning

Project No. 124.09
Scale AS SHOWN @ 24"x36"
Drawn by MDI
Checked by SM

Sheet No. **L2.03**



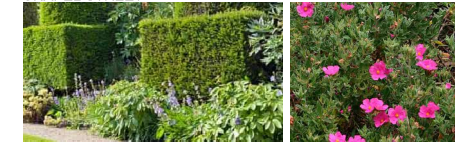
PLANT LIST

| Sym | Qty | Botanical Name | Common Name | Sched. Size / Plant Spacing |
|------------------------------------|-----|--|--------------------------------|-----------------------------|
| TREES: | | | | |
| AR | 8 | Acer rubrum 'Red Sunset' | Red Sunset Red Maple | 6,0cm cal, b&b |
| CCA | 6 | Cercis canadensis | Eastern Redbud | 5,0cm cal, b&b |
| CKK | 2 | Cornus kousa 'Milky Way' | Milky Way Kousa Dogwood | multi-stem, 1,5 m ht, b&b |
| MAG | 2 | Magnolia kobus | Kobus Magnolia | 5,0cm cal, b&b |
| NS | 8 | Nyssa sylvatica 'Wildfire' | Tupelo | 5,0cm cal, b&b |
| POM | 2 | Picea omorika | Serbian Spruce | 2,5m ht, b&b |
| PSY | 1 | Pinus sylvestris | Scots Pine | 1,5m ht, b&b |
| OG | 2 | Quercus garryana | Garry Oak | 4,0cm cal, b&b |
| SHRUBS/FERNS/GRASSES/VINES: | | | | |
| Au-1 | 3 | Arbutus unedo | Strawberry Tree | #3 pot |
| Ana | 136 | Aster novae-angliae | New England Aster | Sp3 |
| Brg | 38 | Brachyglottis greyi | Daisy Bush | Sp3 |
| Cil | 28 | Cistus salvifolius | Sage Leaf Rock Rose | #1 pot |
| Ep | 26 | Echinacea purpurea | Purple Coneflower | #1 pot |
| Hmg | 108 | Hakonechloa macro 'All Gold' | All Gold Japanese Forest Grass | #1 Pot |
| Hap | 4 | Hamamelis 'intermedia 'Arnold Promise' | Hybrid Witch Hazel | #15 pot |
| Hto | 107 | Hebe topiaria | Topiariat's hebe | #1 pot |
| Lim | 90 | Liriope muscari | Lily turf | #1 pot |
| Lp | 9 | Lonicera pileata | Privet Honeysuckle | #2 pot |
| Msa | 16 | Miscanthus sinensis 'Adagio' | Adagio Maiden Grass | #1 pot |
| Nep | 116 | Nepeta x faassenii | Catmint | Sp3 |
| Pa | 18 | Pennisetum alopecuroides 'Hamel' | Fountain Grass | #1 pot |
| Pat | 30 | Perovskia atriplicifolia | Russian Sage | #1 pot |
| PeLS | 49 | Perovskia 'Little Spire' | Dwarf Russian Sage | Sp3 |
| Pmu | 7 | Pinus mugo mugo | Dwarf Mugo Pine | #2 pot |
| Pm | 133 | Polystichum munitum | Sword Fern | #1 pot |
| Rs | 19 | Ribes sanguineum | Red Flowering Currant | #3 pot |
| Rf | 2 | Rudbeckia fulgida | Black-Eyed Susan | #1 pot |
| Sar | 12 | Sarcococca nuscifolia | Sweetbox | #2 pot |
| Tbr | 58 | Taxus baccata 'Repandens' | English Weeping Yew | #1 pot |
| Tax | 23 | Taxus x media | Hybrid Yew | #5 pot |
| RAIN GARDEN PLANTS: | | | | |
| Co | 492 | Carex obnupta | Slough Sedge | #1 pot |
| Cok | 19 | Cornus sericea 'Kelseyii' | Dwarf Red-twigged Dogwood | #1 pot |
| Jog | 228 | Juncus 'Carmen's Grey' | Soft Common Rush | Sp3 |
| Lc | 130 | Lobelia cardinalis | Cardinal Flower | #2 pot |
| Rf | 6 | Rudbeckia fulgida | Black-Eyed Susan | #1 pot |
| Vbd | 13 | Viburnum davidii | David Viburnum | #2 pot |

FLOWERING PERENNIALS AND FOCAL TREE
NORTH PUBLIC PLAZA (AT TRIANGLE)



EVERGREEN HEDGING AND FLOWERING PERENNIALS
CHAPEL STREET



SEDGES AND WATER-LOVING FLOWERS
SKINNER STREET RAIN PLANTERS



MDI LANDSCAPE ARCHITECTS
1188 Columbia St. Vancouver, BC V6E 2Y6
Tel: 604-681-1111 Fax: 604-681-1112
www.mdi-landscape.com

| No. | Issued For | Issue Date |
|-----|-----------------|------------|
| 2 | DP Resubmission | 2024-11-12 |
| 1 | DP Submission | 2024-07-22 |



client
Primex Investments Ltd.
1758 W 4th Ave #200
Vancouver, BC

project
77 Chapel Street
77 Chapel Street
Nanaimo, BC

sheet title
Planting

RECEIVED
DP1350
2024-NOV-12
LANDSCAPE ARCHITECTURE

project no. 124.09
scale 1:150 @ 24"x36"
drawn by MDI
checked by SM

sheet no. **L3.01**

