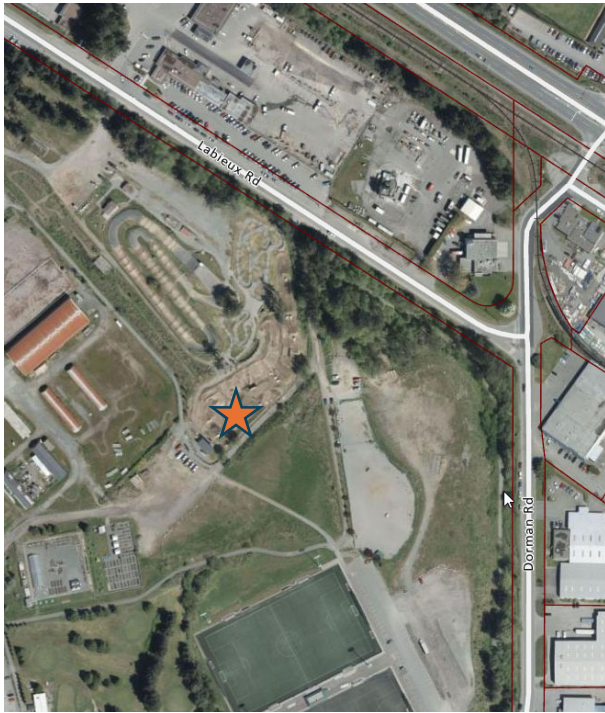


ATTACHMENT C

STEVIE SMITH BIKE PARK

Site Location and Photos



PIP Request Budget	
Site prep and fill	\$15,000 (donated)
Engineered design	\$10,000 (donated)
Permit	\$ 5,000 (PIP)
Materials	\$29,000 (PIP)
Labour	<u>\$30,000</u> (Pip/ donate)
Total	<u>\$89,000</u>

The PIP request is for \$40,000 to cover the shelter materials, permit and partial labour.

PIP Fundraising Commitment

In 2024, Stevie Smith Legacy Foundation installed lights at the Stevie Smith bike park with a donated value in excess of \$60,000. Donated materials and services were from a variety of community businesses.

Donations for this shelter/platform project will include structural engineering and design from Herold Engineering, fill and site prep by Milner, labour from community construction companies, and potential contingency funding from the Stevie Smith Legacy Foundation.