

ATTACHMENT F LANDSCAPE PLAN AND DETAILS

WOODGROVE SELF STORAGE - - - - - LANDSCAPE CONCEPT - - - - -

6450 NORTH ISLAND HWY

PLANT LIST

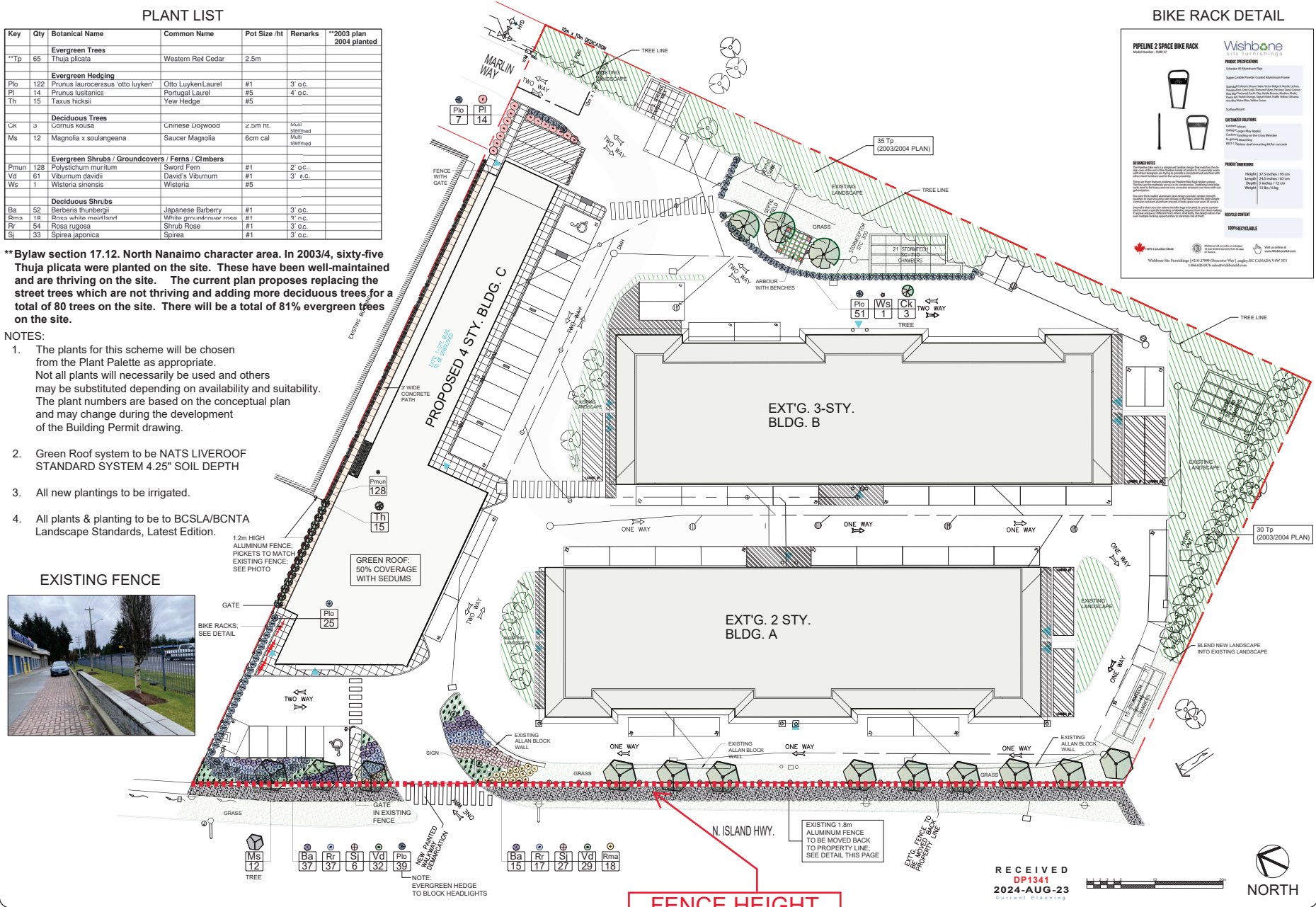
Key	Qty	Botanical Name	Common Name	Pot Size / ht	Remarks	**2003 plan 2004 planted
Evergreen Trees						
**Tp	65	<i>Thuja plicata</i>	Western Red Cedar	2.5m		
Evergreen Hedging						
Plo	122	<i>Prunus laurocerasus</i> 'otto luyken'	Otto Luyken Laurel	#1	3' o.c.	
Pt	14	<i>Prunus lusitanica</i>	Portugal Laurel	#5	4' o.c.	
Th	15	<i>Taxus hicksii</i>	Yew Hedge			
Deciduous Trees						
Lk	3	<i>Cornus kousa</i>	Chinese Dogwood	2.5m ht.	Multi stemmed	
Ms	12	<i>Magnolia x soulangeana</i>	Saucer Magnolia	6cm cal	Multi stemmed	
Evergreen Shrubs / Groundcovers / Ferns / Climbers						
Pmun	128	<i>Polystichum muritum</i>	Sword Fern	#1	2' o.c.	
Vd	61	<i>Viburnum davidii</i>	David's Viburnum	#1	3' e.c.	
Ws	1	<i>Wisteria sinensis</i>	Wisteria	#5		
Deciduous Shrubs						
Ba	52	<i>Berberis thunbergii</i>	Japanese Barberry	#1	3' o.c.	
Rms	18	<i>Rosa white mairlandi</i>	White pruned rose	#1	3' o.c.	
Rr	54	<i>Rosa rugosa</i>	Shrub Rose	#1	3' o.c.	
Sj	33	<i>Spiraea japonica</i>	Spiraea	#1	3' o.c.	

****Bylaw section 17.12. North Nanaimo character area. In 2003/4, sixty-five Thuja plicata were planted on the site. These have been well-maintained and are thriving on the site. The current plan proposes replacing the street trees which are not thriving and adding more deciduous trees for a total of 80 trees on the site. There will be a total of 81% evergreen trees on the site.**

NOTES:

- The plants for this scheme will be chosen from the Plant Palette as appropriate. Not all plants will necessarily be used and others may be substituted depending on availability and suitability. The plant numbers are based on the conceptual plan and may change during the development of the Building Permit drawing.
- Green Roof system to be NATS LIVEROOF STANDARD SYSTEM 4.25" SOIL DEPTH
- All new plantings to be irrigated.
- All plants & planting to be to BCSLA/BCNTA Landscape Standards, Latest Edition.

EXISTING FENCE



BIKE RACK DETAIL

PIPELINE 2 SPACE BIKE RACK
Model Number: PBR-2

Wishbone
with turnings

PRODUCT SPECIFICATIONS
Material: Powder Coated Aluminium Frame
Finish: RAL 9005 (Black) or RAL 9006 (White) or RAL 9010 (Grey) or RAL 9011 (Red) or RAL 9012 (Blue) or RAL 9013 (Green) or RAL 9014 (Yellow) or RAL 9015 (Orange) or RAL 9016 (Purple) or RAL 9017 (Pink) or RAL 9018 (Brown) or RAL 9019 (Silver) or RAL 9020 (Gold) or RAL 9021 (Copper) or RAL 9022 (Zinc) or RAL 9023 (Nickel) or RAL 9024 (Titanium) or RAL 9025 (Carbon Fiber) or RAL 9026 (Fiberglass) or RAL 9027 (Kevlar) or RAL 9028 (Carbon Fiber/Fiberglass) or RAL 9029 (Carbon Fiber/Kevlar) or RAL 9030 (Carbon Fiber/Fiberglass/Kevlar)

INSTALLATION INSTRUCTIONS
1. Clear the area of any debris or obstacles.
2. Mark the location of the bike rack on the ground.
3. Dig a hole 10cm deep and 10cm wide.
4. Place the bike rack in the hole and ensure it is level.
5. Fill the hole with soil and compact it.
6. Water the area around the bike rack.
7. Repeat steps 1-6 for each bike rack.

PRODUCT DIMENSIONS
Height: 121.5 cm (48 in)
Length: 243.5 cm (96 in)
Width: 18.5 cm (7.3 in)
Weight: 11.8 kg (26 lb)

REVISIONS
1.0: Initial Design
1.1: Revised Design

CONTACT INFORMATION
Wishbone Ltd. (Canada) 1-800-279-0000
Wishbone Ltd. (USA) 1-800-279-0000
Wishbone Ltd. (UK) 01223 800000

NOTES:

REVISIONS:

Issued for DP Review - 2023Jul08

Issued for DP Review - 2023Jul09

Issued for DP Review - 2023Jul10

Issued for DP - 2024Mar20

CoN Comprehensive Letter - 2024Jul31

CoN Comments - 2024Aug20

CONSULTANT:

LANDSCAPE ARCHITECT

PROJECT:

6450 NORTH ISLAND HWY NANAIMO, BC

SITE LEGAL DESCRIPTION:

LOT 1, SECTION 12, WELLINGTON DISTRICT, PLAN 12/124, EXCEPT PART IN 33807

SHEET TITLE:

CONCEPTUAL LANDSCAPE DESIGN SCHEME

SCALE: 1" = 20'-0" DATE: JUL. 5, 2023

DRAWN: DR CHECKED: VJD

PROJECT NUMBER: WOODGROVE SELF STORAGE 2023

DRAWING NUMBER: L0.1/DP

MUN. DWG#:

FENCE HEIGHT VARIANCE

RECEIVED
DP1341
2024-AUG-23

