

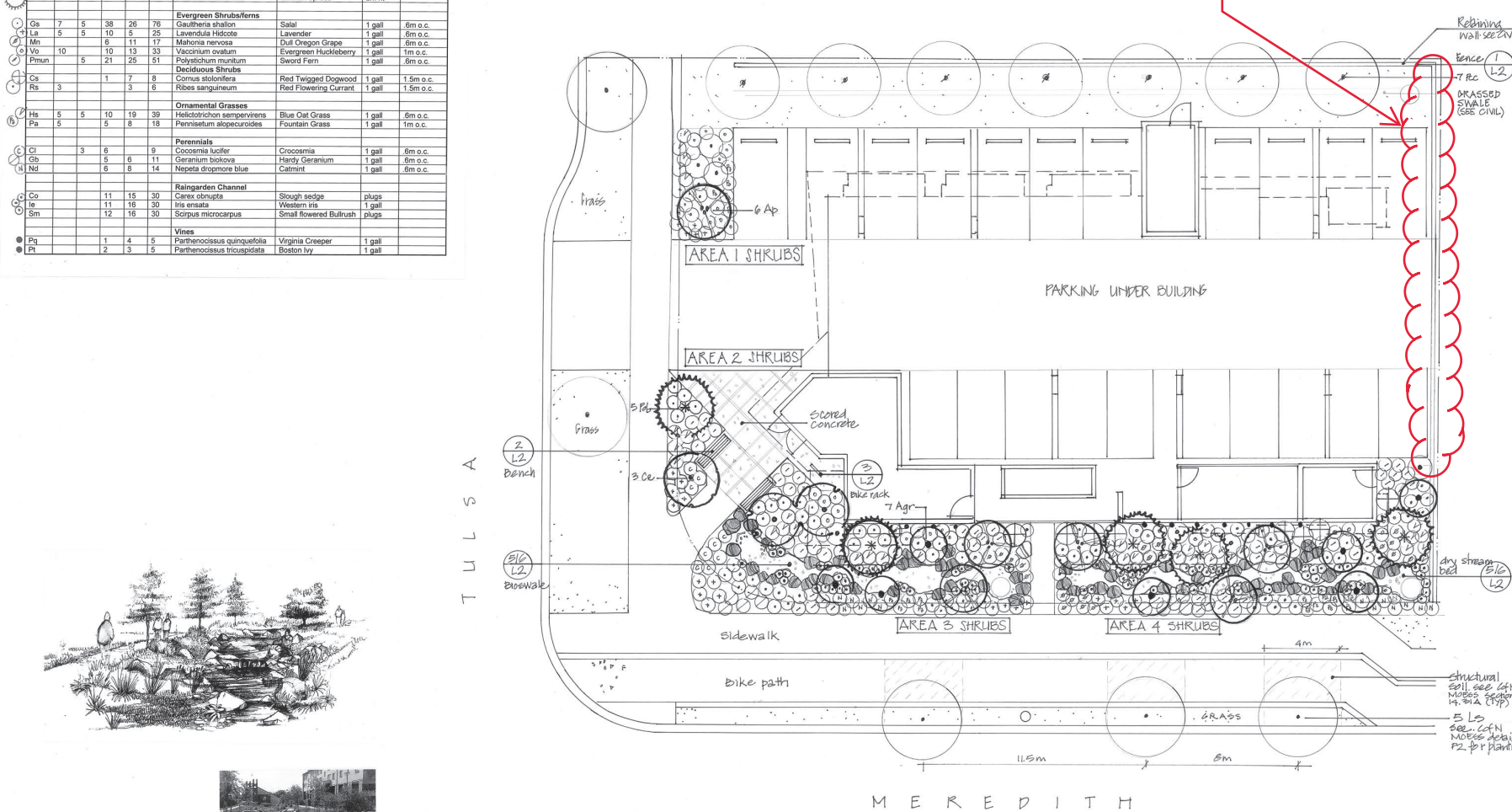
ATTACHMENT F LANDSCAPE PLAN AND DETAILS

PLANT LIST

Key	Qty	1	2	3	4	Tot Qty	Botanical Name	Common Name	Pot Size	Remarks/spacing
Deciduous Trees										
Ap	1		2	3	6		Acer palmatum	Japanese Maple	2.5m ht	Multistem
Apr			3	4	7		Amelanchier grandiflora	Serviceberry	10 gall	Multistem
Cn		1	2		3		Cornus eddis white wonder	Flowering Dogwood	6 cm cal	
Le					5		Liquidambar styraciflua	Sweetgum	6 cm cal	Branching ht 1.8m
Poc					7		Pyrus calleryana chanticleer	Ornamental Pear	6 cm cal	
Coniferous Trees										
Pob		1	1	3	5		Picea omorika Bruns	Serbian Spruce	2m ht	
Evergreen Shrubs/ferns										
Gs	7	5	38	26	76		Gaultheria shallon	Salal	1 gall	.6m o.c.
Le	5	5	10	15	25		Lavandula Hidcote	Lavender	1 gall	.6m o.c.
Mn			6	11	17		Mahonia nervosa	Dull Oregon Grape	1 gall	.6m o.c.
Vo	10		10	13	33		Vaccinium ovatum	Evergreen Huckleberry	1 gall	1m o.c.
Psm		5	21	28	51		Polystichum munium	Sword Fern	1 gall	.6m o.c.
Deciduous Shrubs										
Gs			1	7	8		Cornus stolonifera	Red Twigged Dogwood	1 gall	1.5m o.c.
Rb			3		6		Ribes sanguineum	Red Flowering Currant	1 gall	1.5m o.c.
Ornamental Grasses										
Hs	5	5	10	19	39		Blue Oat Grass	Blue Oat Grass	1 gall	.6m o.c.
Pa	5	5	8	18			Pennisetum alopecuroides	Fountain Grass	1 gall	1m o.c.
Perennials										
Cl		3	6		9		Coccosmia lucifer	Coccosmia	1 gall	.6m o.c.
Gb			5	6	11		Geranium biokovo	Hardy Geranium	1 gall	.6m o.c.
Nt			6	8	14		Nepeta dropmore blue	Catmint	1 gall	.6m o.c.
Raingarden Channel										
Cs			11	15	30		Carex obovata	Slough sedge	plugs	
le			11	16	30		Iris ensata	Western iris	1 gall	
Sm			12	16	30		Scirpus microcarpus	Small flowered Bulrush	plugs	
Vines										
Pq			1	4	5		Parthenocissus quinquefolia	Virginia Creeper	1 gall	
Pl			2	3	5		Parthenocissus tricuspidata	Boston Ivy	1 gall	

NOTES:
1. SEE CIVIL DRAWINGS FOR STORMWATER MANAGEMENT
2. FOR GRADES SEE CIVIL + ARCHITECTURAL DRAWINGS

LANDSCAPE BUFFER VARIANCE



CONCEPT for BIOSWALE



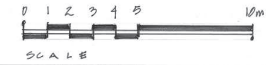
RECEIVED
DP1337
2024-OCT-24
Current Planning

13/01/21 MUNDWIS
12/24 ISSUED FOR B.P.
DATE REV DESCRIPTION
CONSULTANT
VICTORIA DRAKEFORD
LANDSCAPE ARCHITECT
236 Pine St. Nanaimo, B.C. V9B 2B8
250-764-4335
victoria@island.net

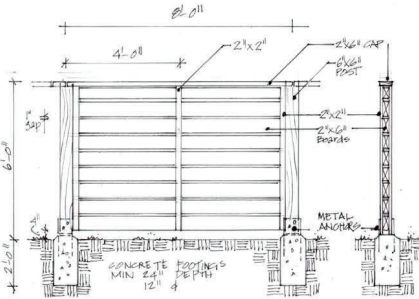
PROJECT
2126
MEREDITH ROAD
NANAIMO BC.

SHEET TITLE
LANDSCAPE PLAN

SCALE 1:100 m DATE 4.2.21
DRAWN VJD CHECKED
PROJECT NUMBER Meredith
DRAWING NUMBER
M.D. ENG 2021/08 L1/3



NOTES
1. WOOD TO BE CEDAR WITH CLEAR STAIN
2. ALL FASTENERS TO BE GALVANIZED.



1 L1 6' HT. BOARD FENCE

WEST COAST BACKLESS PARK BENCH
Model Number : WCB-65

Wishbone site furnishings

PRODUCT SPECIFICATIONS
100% Recycled Plastic Slats
10 YEAR LIMITED WARRANTY
Durable Powder Coated Aluminum Frame
Standard Colours: Brown Slate, Victor Ridge, Nordic Lichen, Timeless Rust, Gray Cast, Textured Stone, Precision Sand, Crispy Rust, Black Textured, Earth Clay, Noble Brown, Modern Khaki
Long Lasting Stainless Steel Hardware
Surface: Movable
Removable Armrests

DESIGNER NOTES
Over the years we have been encouraged by our customers to stretch our imagination when it comes to product design. Many were wanting something that had a modern contemporary feel while maintaining the benefits of low maintenance and sustainable materials. In true Wishbone fashion we took on the challenge. We contacted none other than a European industrial designer to help us through the process. With his help we were able to incorporate European design aesthetics into a West Coast / North American concept. Our biggest challenge was not the design, but our ability to meet it. As a result through our current manufacturing capabilities, the benches specified as in ways we never thought were possible! Critical to the success of this project was innovative thinking, investment in tooling, collaboration, and sheer perseverance. Integral in the design are subtle features that truly make this bench unique. A generous seating surface provides comfort for all user groups while the low profile ergonomically designed back rest is both attractive and thought to tag with gravity. Dark armrests, a center armrest option, and hidden fasteners give the bench a sophisticated & clean appearance from every angle. The most unique characteristic of the bench is the ability to powder coat the armrests, pedestal bases and seat sections in different powder coat colours.

AVAILABLE RECYCLED PLASTIC LUMBER COLOURS
Black Grey Redwood Sand Walnut

RECYCLED CONTENT
28% RECYCLED CONTENT BY WEIGHT
100% RECYCLABLE

DESIGNER NOTES
The Pipeline bike rack is a simple yet familiar design that matches the design cues of the rest of the Pipeline family of products. It especially works well where designers are trying to provide a consistent look and feel with other street furniture used in the same assembly. There are three features making our Pipeline Bike Rack design unique. The first are the materials we use in its construction. Traditional steel bike racks tend to be heavy and not very corrosion resistant over time with-out galvanization. Our new thick walled aluminum pipe design provides similar strength qualities to steel ensuring safe storage of the bikes while the light weight corrosion resistant aluminum ensures it looks great over years of service. Second is that cross bar where the bike logs is located. It can be customized to meet a specific branding or locking request from the client making it unique or different from others. And lastly, the design allows the user multiple locking opportunities to minimize risk of theft.

100% Canadian Made
Wishbone Ltd provides an extended 10 year limited warranty from the date of invoice.
Visit us online at www.Wishboneltd.com

Wishbone Site Furnishings | #210-27090 Gloucester Way | Langley, BC CANADA V4W 3Y3
1.866.626.0476 sales@wishboneltd.com

2 L1 BENCH

PIPELINE 2 SPACE BIKE RACK
Model Number : PLBR-37

Wishbone site furnishings

PRODUCT SPECIFICATIONS
Schedule 40 Aluminum Pipe
Super Durable Powder Coated Aluminum Frame
Standard Colours: Brown Slate, Victor Ridge, Nordic Lichen, Timeless Rust, Gray Cast, Textured Stone, Precision Sand, Crispy Rust, Black Textured, Earth Clay, Noble Brown, Modern Khaki
Surface Mount

CUSTOMIZED SOLUTIONS
Custom Colours (Setup Charges May Apply)
Custom Branding on the Cross Member
In-ground Mounting
INST-1 Stainless steel mounting kit for concrete

PRODUCT DIMENSIONS
Height 37 5/16 inches / 947 mm
Wall Thickness 2 inches / 51 mm
Width at the Top 24.5 inches / 622 mm
Width at the Base 15.5 inches / 394 mm
Weight 12 lbs / 5.4 kg

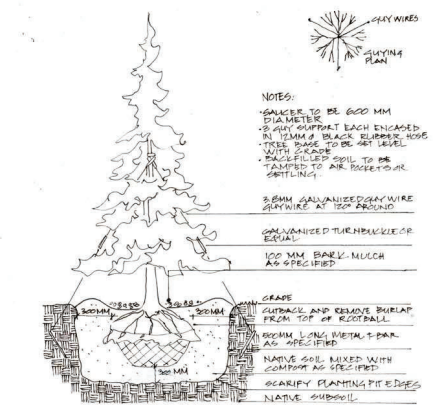
RECYCLED CONTENT
100% RECYCLABLE

DESIGNER NOTES
The Pipeline bike rack is a simple yet familiar design that matches the design cues of the rest of the Pipeline family of products. It especially works well where designers are trying to provide a consistent look and feel with other street furniture used in the same assembly. There are three features making our Pipeline Bike Rack design unique. The first are the materials we use in its construction. Traditional steel bike racks tend to be heavy and not very corrosion resistant over time with-out galvanization. Our new thick walled aluminum pipe design provides similar strength qualities to steel ensuring safe storage of the bikes while the light weight corrosion resistant aluminum ensures it looks great over years of service. Second is that cross bar where the bike logs is located. It can be customized to meet a specific branding or locking request from the client making it unique or different from others. And lastly, the design allows the user multiple locking opportunities to minimize risk of theft.

100% Canadian Made
Wishbone Ltd provides an extended 10 year limited warranty from the date of invoice.
Visit us online at www.Wishboneltd.com

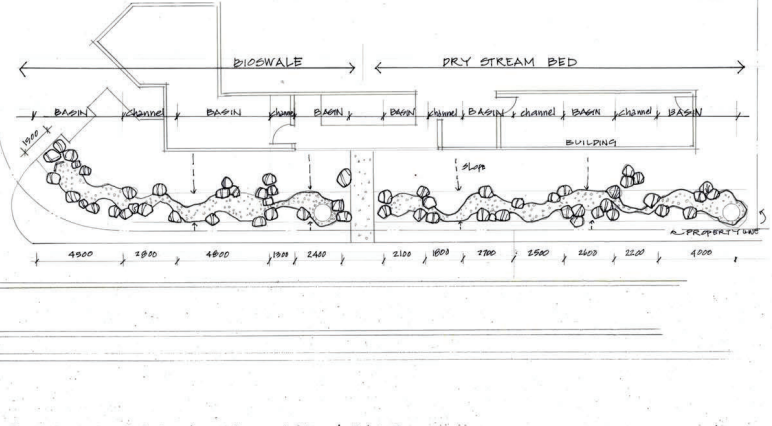
Wishbone Site Furnishings | #210-27090 Gloucester Way | Langley, BC CANADA V4W 3Y3
1.866.626.0476 sales@wishboneltd.com

3 L1 BIKE RACK

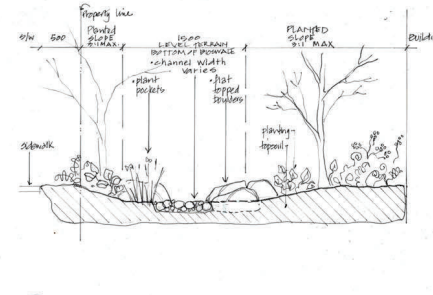


4 L1 TYPICAL CONIFEROUS TREE PLANTING N.T.S.

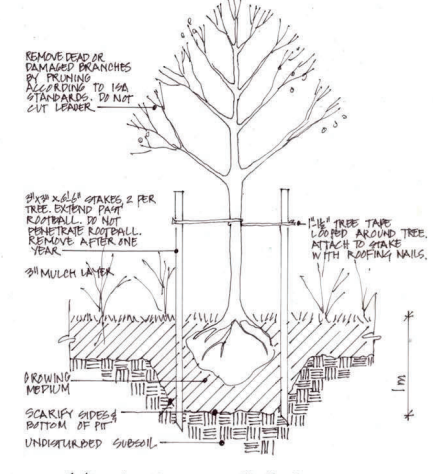
NOTES: The bioswale/dry stream bed is a series of basins and channels defined by large flat topped boulders. The basins and pockets of plants. This feature meanders within a 1.5m wide channel which forms the bottom of the bioswale/dry stream bed.



5 L1 BIOSWALE / DRY STREAM BED LAYOUT 1:100



6 L1 BIOSWALE / DRY STREAM BED SECTION 1:20



7 L1 TYPICAL DECIDUOUS TREE PLANTING 1:20mm

RECEIVED
DP1337
2024-OCT-24
Current Planning

REV.	DATE	DESCRIPTION
1	2024-10-24	ISSUED FOR B.P.

CONSULTANT
VICTORIA DRAKEFORD
L.S. ARCHITECTS
LANDSCAPE ARCHITECT
236 Pine St. Nanaimo, BC V8R 2B6
250-754-4335
victoria@island.net

PROJECT
2126 MEREDITH ROAD NANAIMO BC.

SHEET TITLE
DETAILS

SCALE DATE: 2-2-24
DRAWN: VJD CHECKED:
PROJECT NUMBER: Meredith
DRAWING NUMBER: NLDVDR020008 L2/3