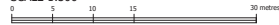


ATTACHMENT A REGISTERED SUBDIVISION PLAN

BCGS 92G.011

SCALE 1:300



THE INTENDED PLOT SIZE OF THIS PLAN IS 500mm IN WIDTH BY 864mm IN HEIGHT (D SIZE) WHEN PLOTTED AT A SCALE OF 1:300.

LEGEND

- CONTROL MONUMENT FOUND
- STANDARD CONCRETE POST FOUND
- STANDARD IRON POST FOUND
- STANDARD IRON POST PLACED
- IPR SHORT IRON POST SET IN ROCK

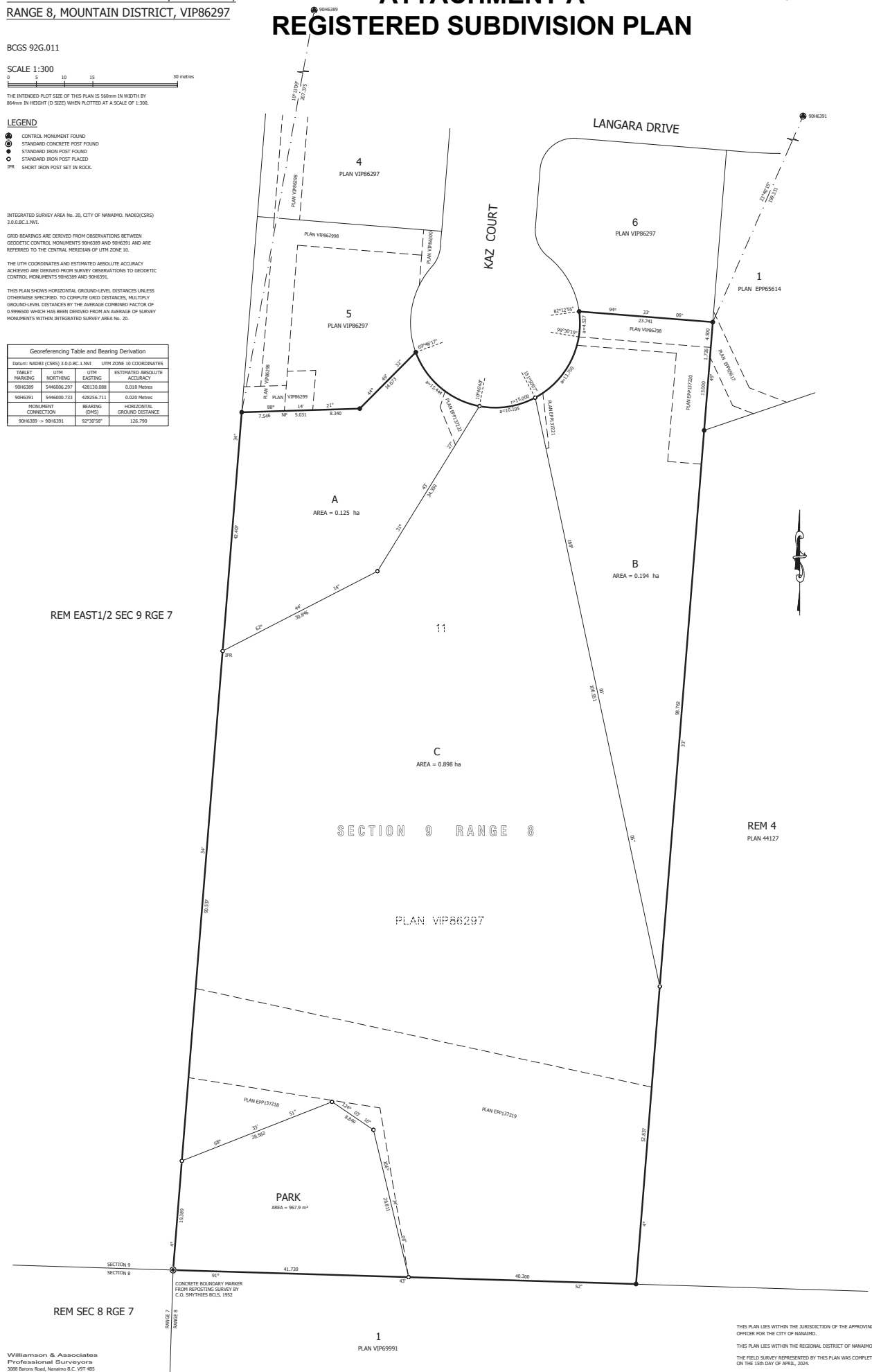
INTEGRATED SURVEY AREA No. 20, CITY OF NANAIMO, NAD83(CRS) 3.0.0.BC.1.NVI.

GRID BEARINGS ARE DERIVED FROM OBSERVATIONS BETWEEN GEODETIC CONTROL MONUMENTS 9046389 AND 9046391 AND ARE REFERRED TO THE CENTRAL MERIDIAN OF UTM ZONE 10.

THE UTM COORDINATES AND ESTIMATED ABSOLUTE ACCURACY ACHIEVED ARE DERIVED FROM SURVEY OBSERVATIONS TO GEODETIC CONTROL MONUMENTS 9046389 AND 9046391.

THIS PLAN SHOWS HORIZONTAL GROUND-LEVEL DISTANCES UNLESS OTHERWISE SPECIFIED. TO COMPUTE GRID DISTANCES, MULTIPLY GROUND-LEVEL DISTANCES BY THE AVERAGE CORRECTION FACTOR OF 0.999650 WHICH HAS BEEN DERIVED FROM AN AVERAGE OF SURVEY MONUMENTS WITHIN INTEGRATED SURVEY AREA No. 20.

Georeferencing Table and Bearing Derivation			
DELUJI MARKS (CRS) 3.0.0.BC.1.NVI	UTM	UTM	UTM ZONE 10 COORDINATES
TABULET MARKING	NORTHING	EASTING	ESTIMATED ABSOLUTE ACCURACY
9046389	5446006.297	428130.088	0.018 Metres
9046391	5446000.733	428256.711	0.020 Metres
MONUMENT CONNECTION (CMS)	BEARING	HORIZONTAL GROUND DISTANCE	
9046389 -> 9046391	92°37'52"	126.790	



REM EAST 1/2 SEC 9 RGE 7

SECTION 9 RANGE 8

PLAN VIP86297

PLAN EPP137218

PLAN EPP137219

REM SEC 8 RGE 7

Williamson & Associates
Professional Surveyors
3088 Brien Road, Nanaimo, B.C. V9T 4B5
FILE: 05125-25 SUB BASEPLAN: 05125

THIS PLAN LIES WITHIN THE JURISDICTION OF THE APPROVING OFFICER FOR THE CITY OF NANAIMO.
THIS PLAN LIES WITHIN THE REGIONAL DISTRICT OF NANAIMO.
THE FIELD SURVEY REPRESENTED BY THIS PLAN WAS COMPLETED ON THE 15th DAY OF APRIL, 2024.
ARNE O. HALL, BCLS 1031