





1

Acknowledgement

Located on the traditional territory of the Stz'uminus First Nation and the Snuneymuxw First Nation, the Nanaimo Airport Commission respectfully acknowledges and thanks the First Nations for their caring of these lands and waters since time immemorial.



2

The Airport Lands



522 Acres
Located in
Cassidy BC



Runway Length
6,602 ft
(2,012.5 m)



Most centrally
located airport
based on
population






Only Airport on
Vancouver Island
serviceable by
passenger rail









3

YCD – Board of Directors

- Board of directors comprises of 9 persons
- 5 entities members
 - City of Nanaimo
 - Regional District of Nanaimo
 - Town of Ladysmith
 - Cowichan Valley Regional District
 - Nanaimo Chamber of Commerce
- 4 members at large






Current Board Members

Colleen Johel <i>(Chair)</i>	Garth Busch <i>(Vice Chair)</i>	Mark Taylor <i>(Secretary)</i>
Mike Brown	Janna Gillick	Harpreet Minhas
Gord Horth	George Hanson	Vacant



4

YCD Governance

OUR VISION

As “your most centrally located gateway between Vancouver Island and the World” we provide exemplary and sustainable passenger and aviation-related services that support regional economic development

OUR MISSION

To manage the Nanaimo Airport’s assets and relationships with our exceptional team to provide safe, financially sustainable, friendly, high-quality services to our customers, business partners and the community while contributing to our region’s environmental, social and economic needs.



Strengthen our core business and diversify our revenue base



Minimize environmental impacts and achieve Net Zero by 2030



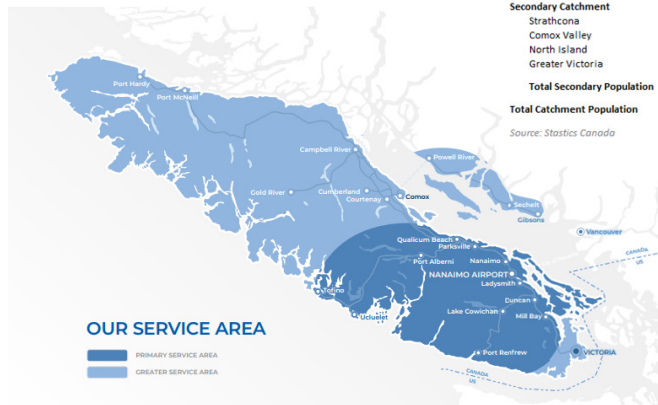
Strengthen relationships, partnerships and First Nations reconciliation



Pursue excellence in airport operations, management and customer experience

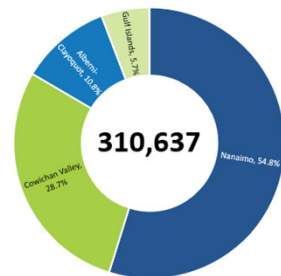


YCD Catchment Area

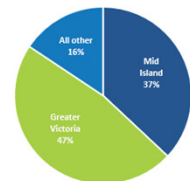


Name	2024 CATCHMENT AREA POPULATION			
	Population	Allocation	Increase (Decrease) Amount	%
Primary Catchment				
Nanaimo	170,367	54.8%	14,669	9.4%
Cowichan Valley	89,013	28.7%	5,274	6.3%
Alberni-Clayoquot	33,521	10.8%	2,540	8.2%
Gulf Islands	17,736	5.7%	2,447	16.0%
Total Primary Population	310,637	37.0%	24,930	8.7%
Secondary Catchment				
Strathcona	48,150		3,479	7.8%
Comox Valley	72,445		5,918	8.9%
North Island	10,839		(196)	-1.8%
Greater Victoria	397,715		29,644	8.1%
Total Secondary Population	529,149	63.0%	38,845	7.9%
Total Catchment Population	839,786		63,775	8.2%

Source: Statistics Canada

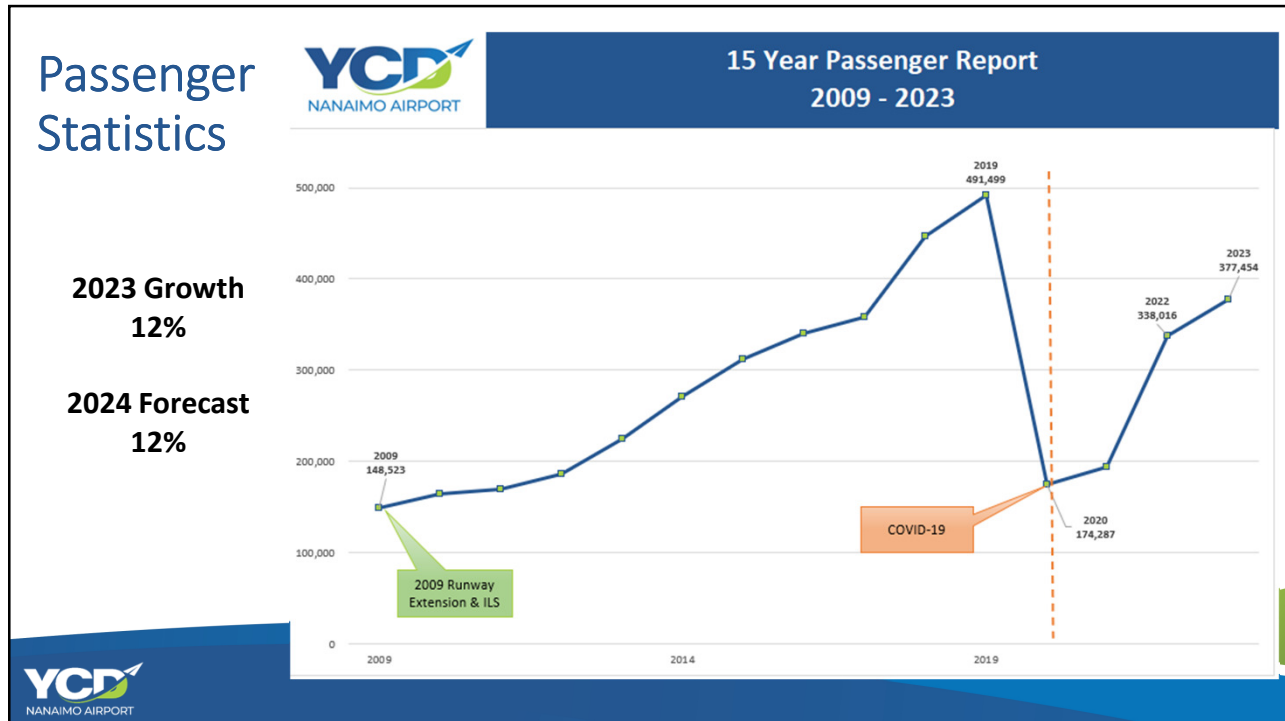


Population by Area

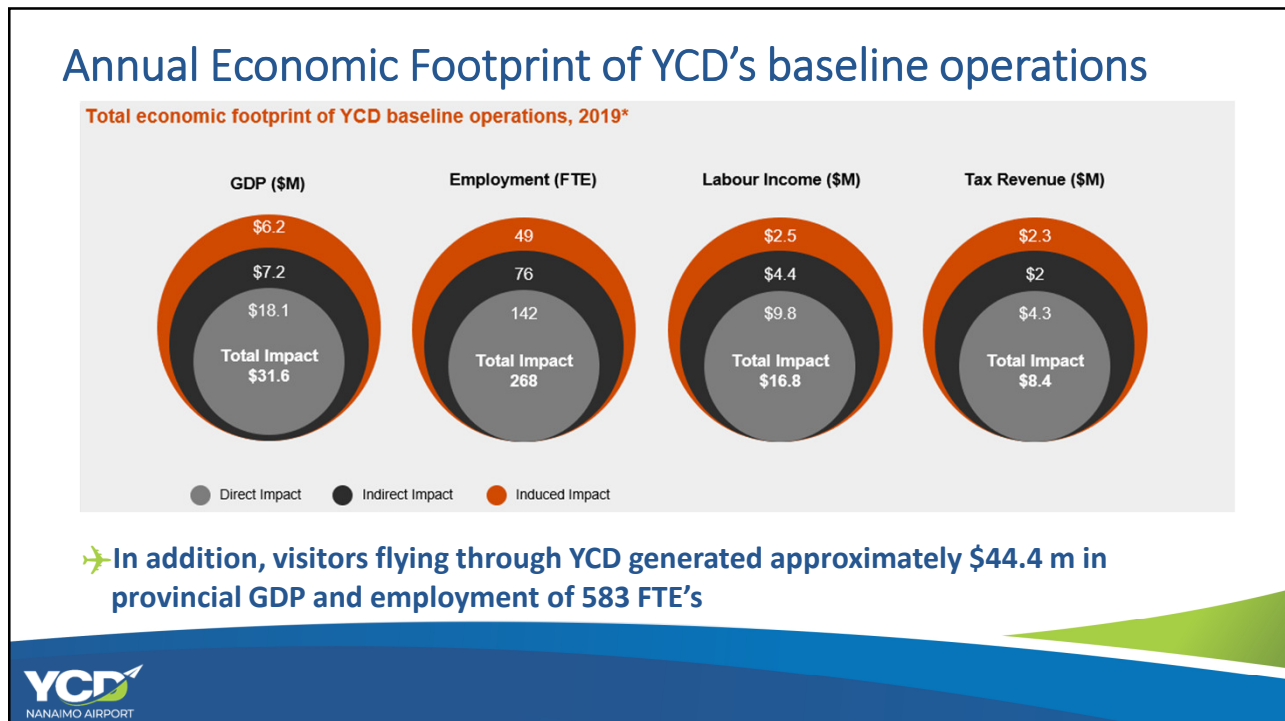


Approximately 98% of Van Isle population less than a 2-hour drive to YCD

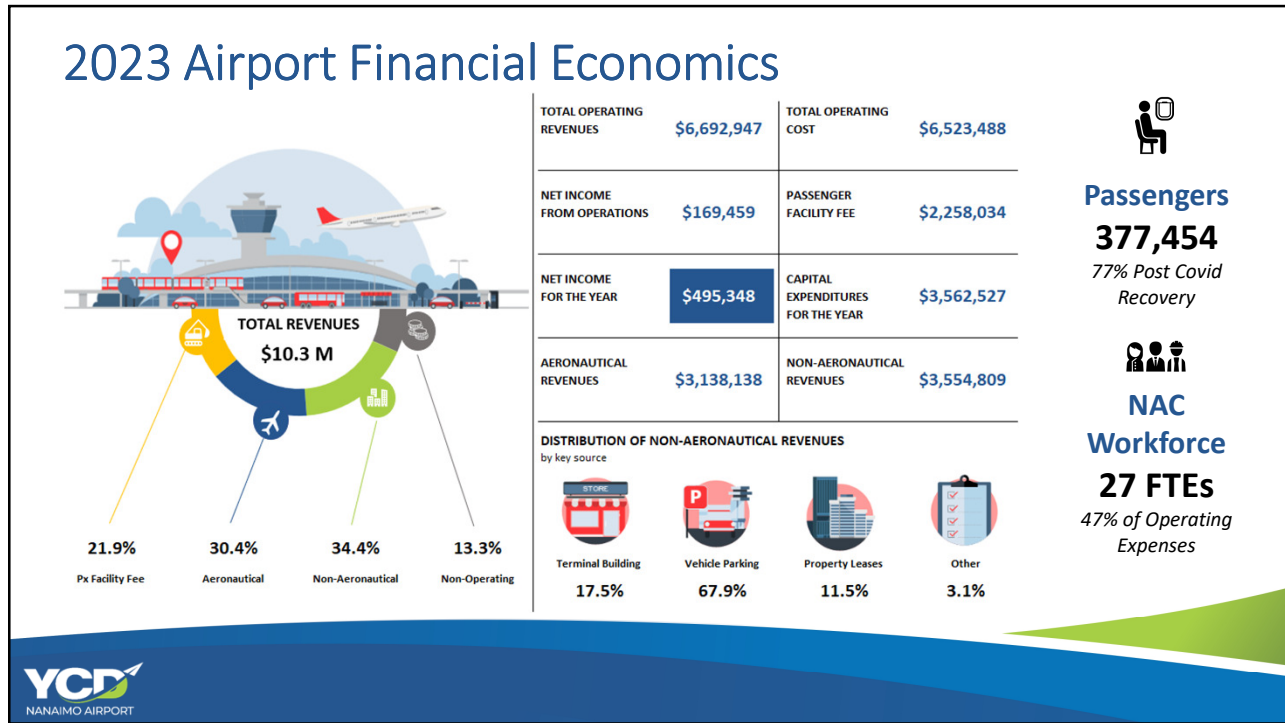




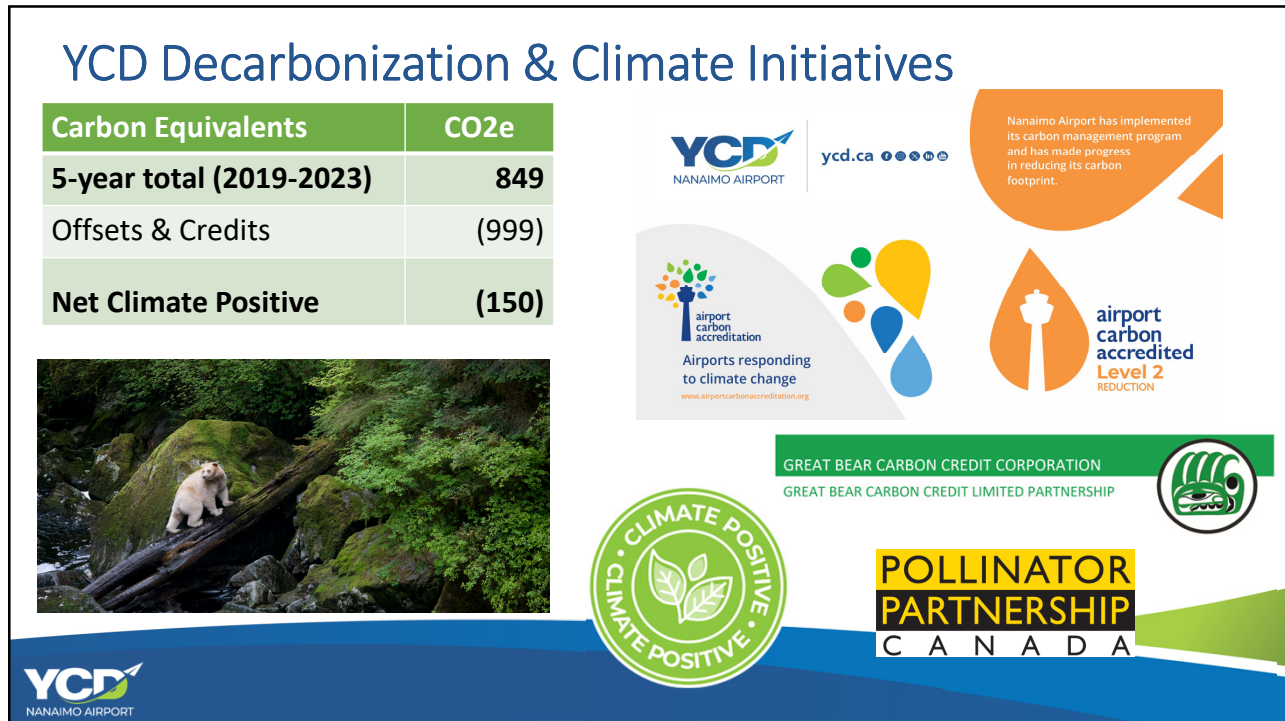
7



8



9



10

Investing In Our Community

✈️ Scholarships and Bursaries

- ✈️ BC Aviation Council
- ✈️ Vancouver Island University
- ✈️ School Districts
 - ✈️ SD68 – Nanaimo/Ladysmith School District
 - ✈️ SD69 – Qualicum School District
 - ✈️ SD70 – Alberni School District
 - ✈️ SD79 – Cowichan Valley School District

✈️ Community Donations

- ✈️ 2/3's of annual donation budget supports:

**COWICHAN DISTRICT
HOSPITAL FOUNDATION**
1984 - 2024



✈️ Sponsorships

- ✈️ 39 Sponsorships in 2023 focusing on:
 - ✈️ Community & industry events
 - ✈️ Arts & culture events
 - ✈️ First Nation youth events
 - ✈️ Sports teams
 - ✈️ Conferences and business awards

NANAIMO &
DISTRICT
HOSPITAL
FOUNDATION



It's in our
Nature
to Give



11

2023 Achievements

- ✈️ First Boeing Max 8 – 737 lands at YCD
- ✈️ Pacific Coastal Begins Service to Kelowna
- ✈️ Finalist for 2nd year in a row for ACI North America Best in Airport Partnership Award
- ✈️ Launched new YCD.ca website and relaunched social media



12



13

Recent and Future Heavy Equipment Additions

- ✈️ Larue Snow Blower - 2021
- ✈️ Freightliner Plow Truck with Snow Plow – 2023
- ✈️ Runway Sweeper – 2024 Delivery Date
- ✈️ Front End Loader – 2024 Delivery Date
- ✈️ Tractor with Brushing Arm – 2024 Delivery Date
- ✈️ 55% ACAP Funded

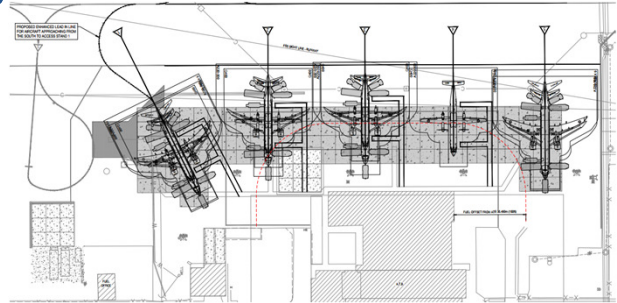


YCD
NANAIMO AIRPORT

14

2022 Capital Improvements

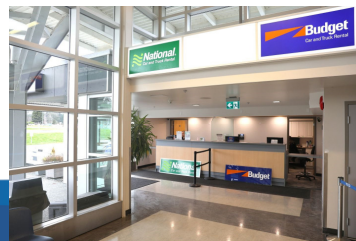
- ✈️ Resurface Runway & Taxiways
- ✈️ Runway End Safety Areas constructed
- ✈️ Runway grooved
- ✈️ Convert apron from asphalt to concrete
- ✈️ Increase from 4 aircraft parking stalls to 5
- ✈️ Move to push back environment



15

2023 Improvements

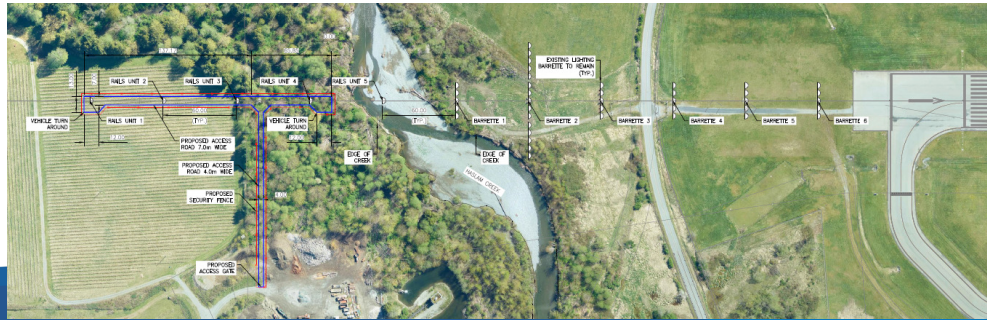
- ✈️ Installation of Simplified Short Approach Lighting System (SSALS) on concrete piles
- ✈️ Airport Terminal Building Improvements
 - ✈️ Vehicle Rental Area Renovated
 - ✈️ Extra Check-in Counter spaces added
 - ✈️ Dry Chemical Fire Suppression System installed in Server Room
 - ✈️ New high efficient HVAC Units Installed
 - ✈️ Roof Replaced



16

2024 Improvements

- ✈ Installation of Short Simplified Approach Lighting System with Runway Alignment Indicator Lights (SSALR) – Main project for 2024
- ✈ Planning for Digital Technology Upgrades
 - ✈ Common Use Technology Equipment (CUTE)
 - ✈ Digital Signage throughout Airport Terminal Building
 - ✈ Highway digital billboard



17

Future Projects and Improvements



18


Runway Approach Analysis

Current

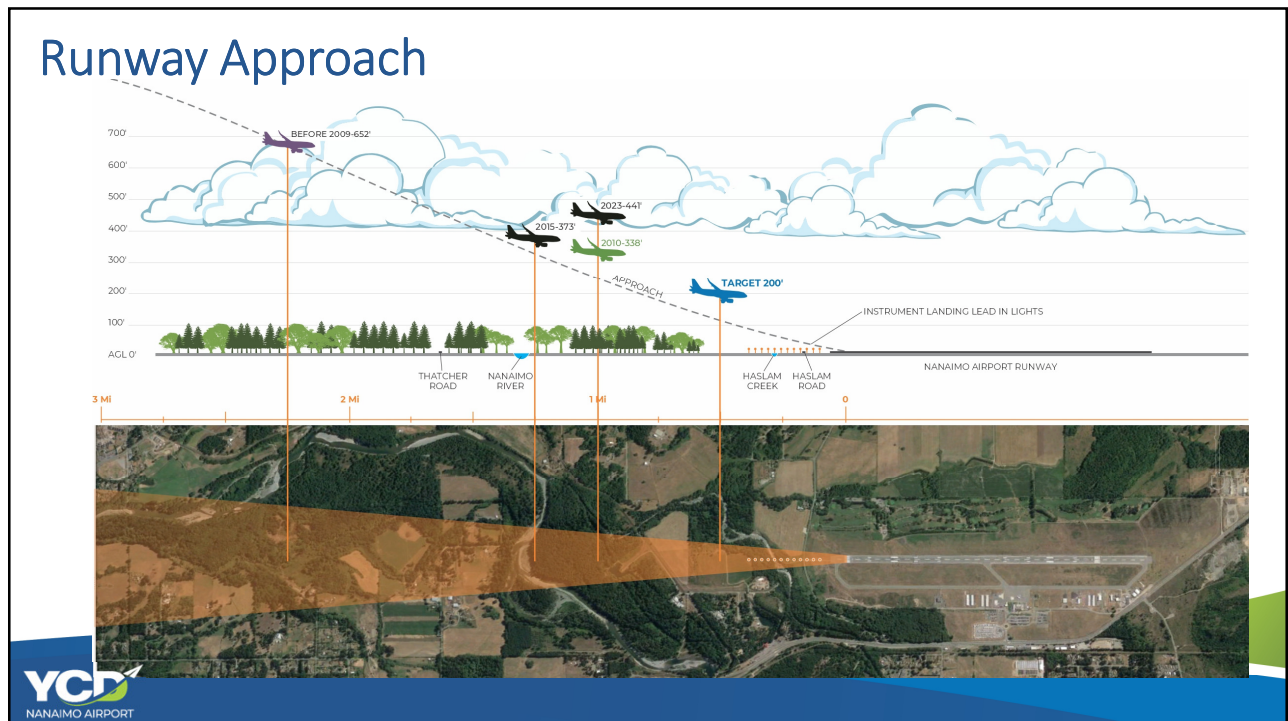
- ✈️ TP312-4th Edition
 - ✈️ RWY 16 – Non-Precision
 - ✈️ RWY 34 – Non-Instrument

Project Scope

- ✈️ Preparing an analysis to determine if and how YCD can become TP312-5th Edition certified as follows:
 - ✈️ RWY 16 - Precision
 - ✈️ RWY 34 - Non-Precision

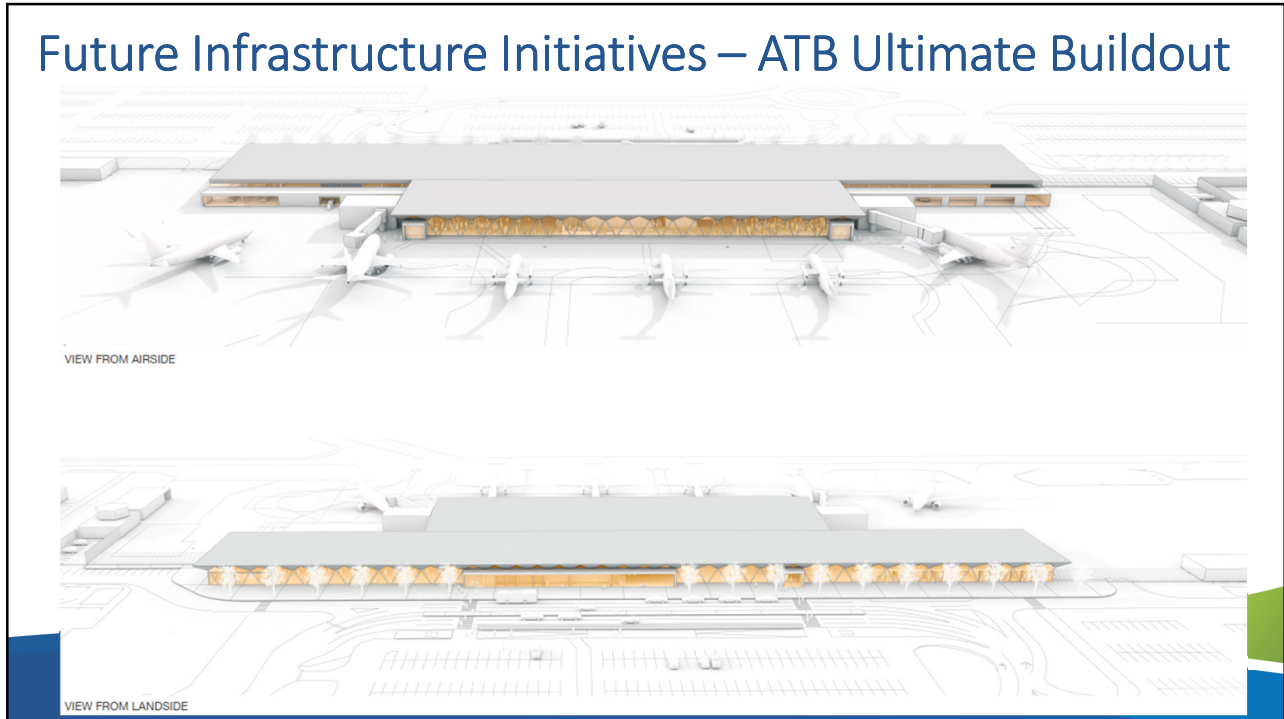


19



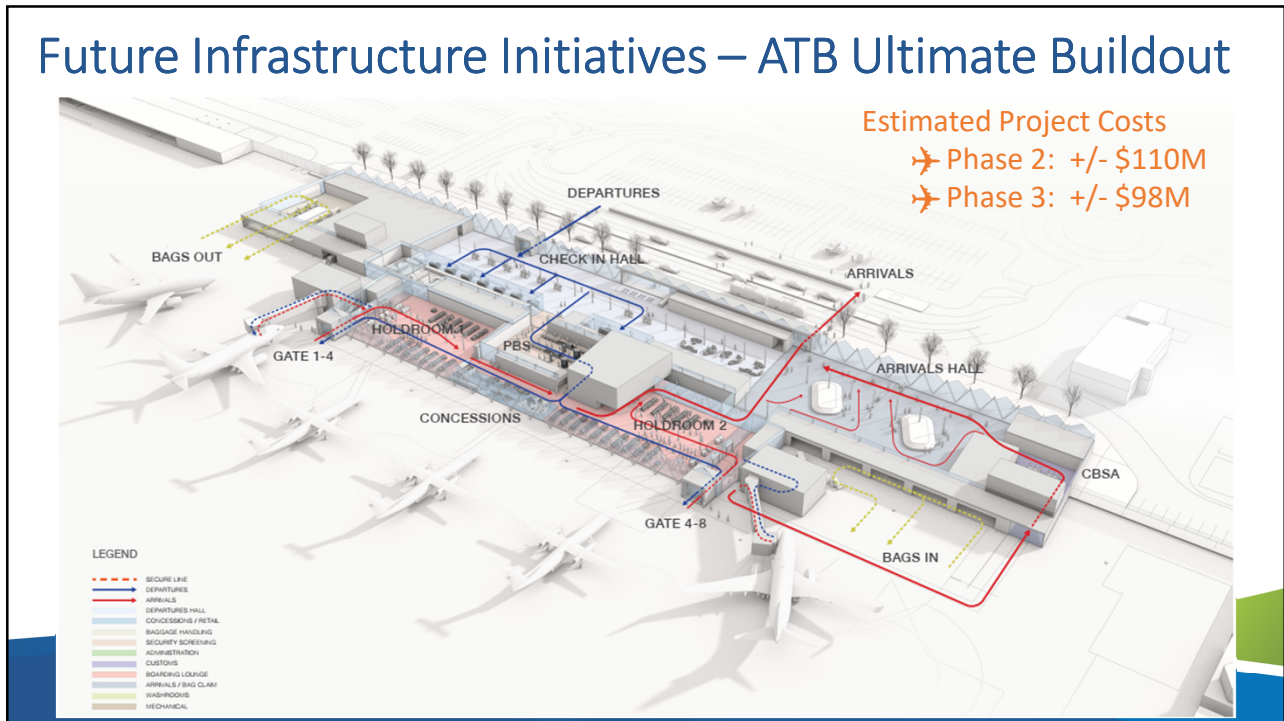
20

Future Infrastructure Initiatives – ATB Ultimate Buildout



21

Future Infrastructure Initiatives – ATB Ultimate Buildout



22

Future Investments - YCD Land Development

Airside
Catalyst Projects

Airport North Economic Development Reserve:
Advanced Air Mobility/UAVs
MRO & Drone Operations
Helicopter MRO Operations

Airport Central & South:
FBO/Corporate Terminal with Office
MRO Operations
Tech Innovation Incubator

Gateway Commercial North & Central:
Restaurants & Cafes
Drive-Through F&B
Food Trucks

Gateway Commercial South:
Visitor & First Nation Centre
Drive Through Restaurant/F&B

23

Future Investments - YCD Land Development

Nanaimo Gateway Business Park
By Sherringham Group

Phase I: Air Cargo | Distribution | Warehousing | Hi-Tech Industrial
Phase II: Commercial | Retail | Restaurant

For Leasing Inquiries:

+1 250 414 8395 collierscanada.com

Ty Whittaker* Brad Archibald*
*Personal Real Estate Corporation Ben Wedge

Airside Cargo and Gateway Commercial/Industrial for lease

Nanaimo Airport | BC

Colliers

Ty Whittaker
Personal Real Estate Corporation
Executive Vice President
+1 250 414 8395
ty.whittaker@colliers.com

Brad Archibald
Personal Real Estate Corporation
Vice President
+1 778 690 2090
brad.archibald@colliers.com

Ben Wedge
Personal Real Estate Corporation
Associate Vice President
+1 250 414 84099
ben.wedge@colliers.com

SHERRINGHAM GROUP

Accelerating success.

24



THANK YOU!



Follow / Re-Follow
Us on Social Media

Dave Devana
President & CEO
Dave.devana@ycd.ca
(250) 245-4191

