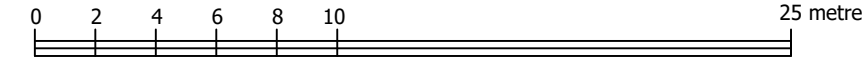


SUBDIVISION PLAN OF LOT 1, SECTION 19, RANGE 6, MOUNTAIN DISTRICT, PLAN 41045

BCGS 92F.020

SCALE 1:250



THE INTENDED PLOT SIZE OF THIS PLAN IS 864mm IN WIDTH BY 560mm IN HEIGHT (D SIZE) WHEN PLOTTED AT A SCALE OF 1:250.

LEGEND

- ▲ CONTROL MONUMENT FOUND
- STANDARD IRON POST FOUND
- STANDARD IRON POST PLACED

THIS PLAN SHOWS WITNESS POSTS WHICH ARE NOT SET ON THE TRUE CORNERS.

INTEGRATED SURVEY AREA No. 20, CITY OF NANAIMO, NAD83(CRS) 3.0.0.BC.1.NVI.

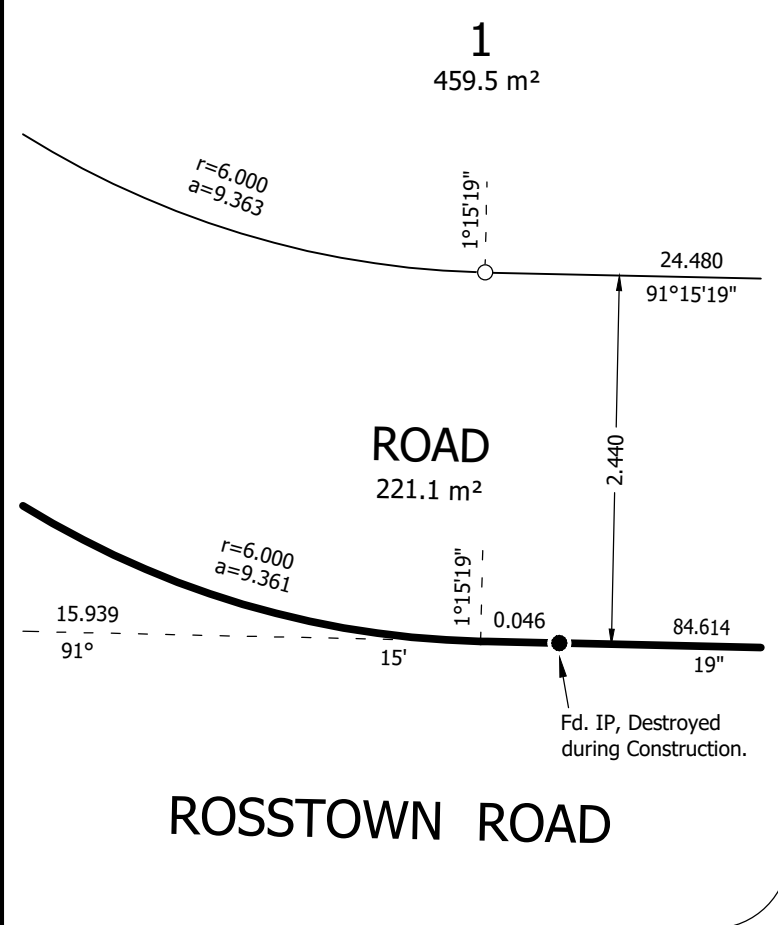
GRID BEARINGS ARE DERIVED FROM OBSERVATIONS BETWEEN GEODETIC CONTROL MONUMENTS 82H5628 AND 78H5451 AND ARE REFERRED TO THE CENTRAL MERIDIAN OF UTM ZONE 10.

THE UTM COORDINATES AND ESTIMATED ABSOLUTE ACCURACY ACHIEVED ARE DERIVED FROM SURVEY OBSERVATIONS TO GEODETIC CONTROL MONUMENTS 82H5628 AND 78H5451.

THIS PLAN SHOWS HORIZONTAL GROUND-LEVEL DISTANCES UNLESS OTHERWISE SPECIFIED. TO COMPUTE GRID DISTANCES, MULTIPLY GROUND-LEVEL DISTANCES BY THE AVERAGE COMBINED FACTOR OF 0.9996500 WHICH HAS BEEN DERIVED FROM AN AVERAGE OF SURVEY MONUMENTS WITHIN INTEGRATED SURVEY AREA No. 20.

| Georeferencing Table              |               |                         |                             |
|-----------------------------------|---------------|-------------------------|-----------------------------|
| Datum: NAD83 (CRS) 3.0.0.BC.1.NVI |               | UTM ZONE 10 COORDINATES |                             |
| TABLET MARKING                    | UTM NORTHING  | UTM EASTING             | ESTIMATED ABSOLUTE ACCURACY |
| 82H5628                           | 5,449,790.287 | 426,573.657             | 0.016 Metres                |
| 78H5451                           | 5,449,685.691 | 426,581.213             | 0.019 Metres                |

DETAIL "A"  
NOT TO SCALE



ROSSTOWN ROAD

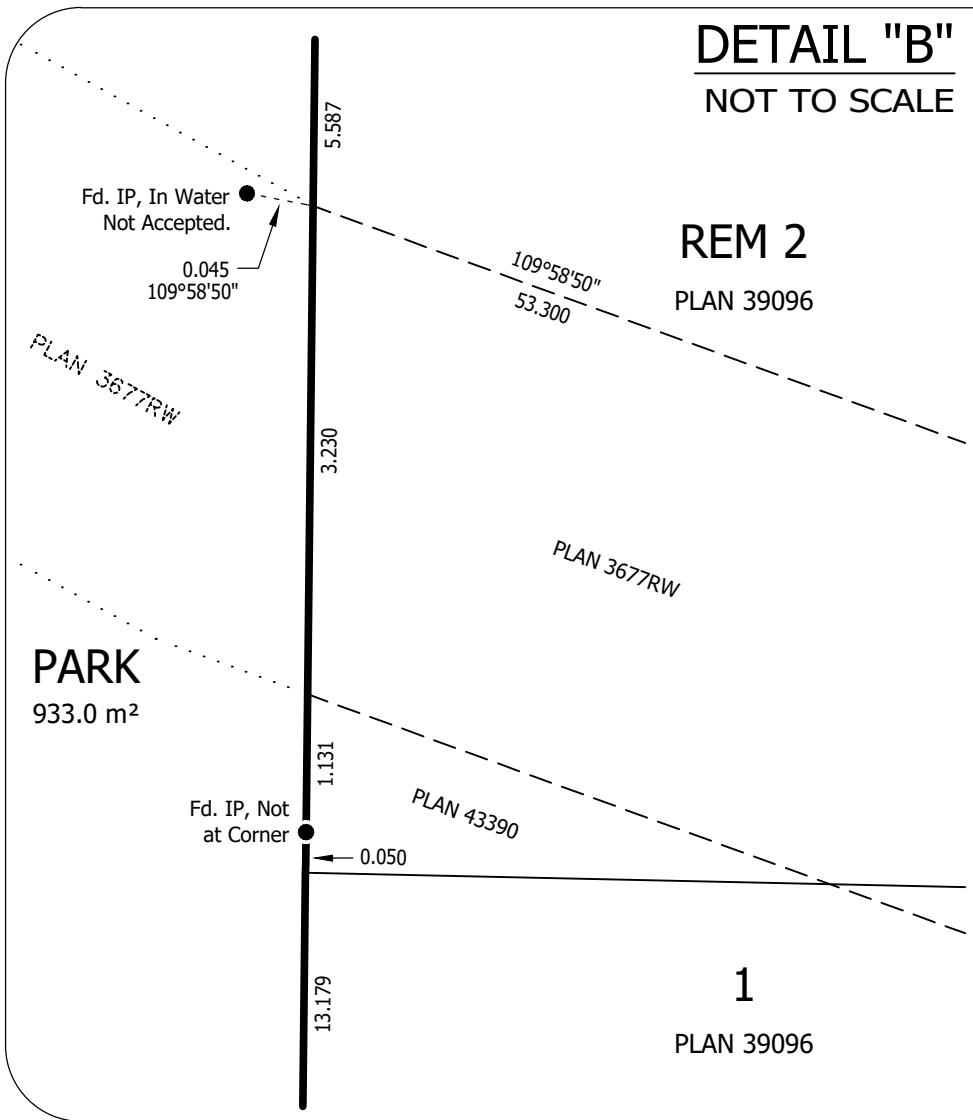
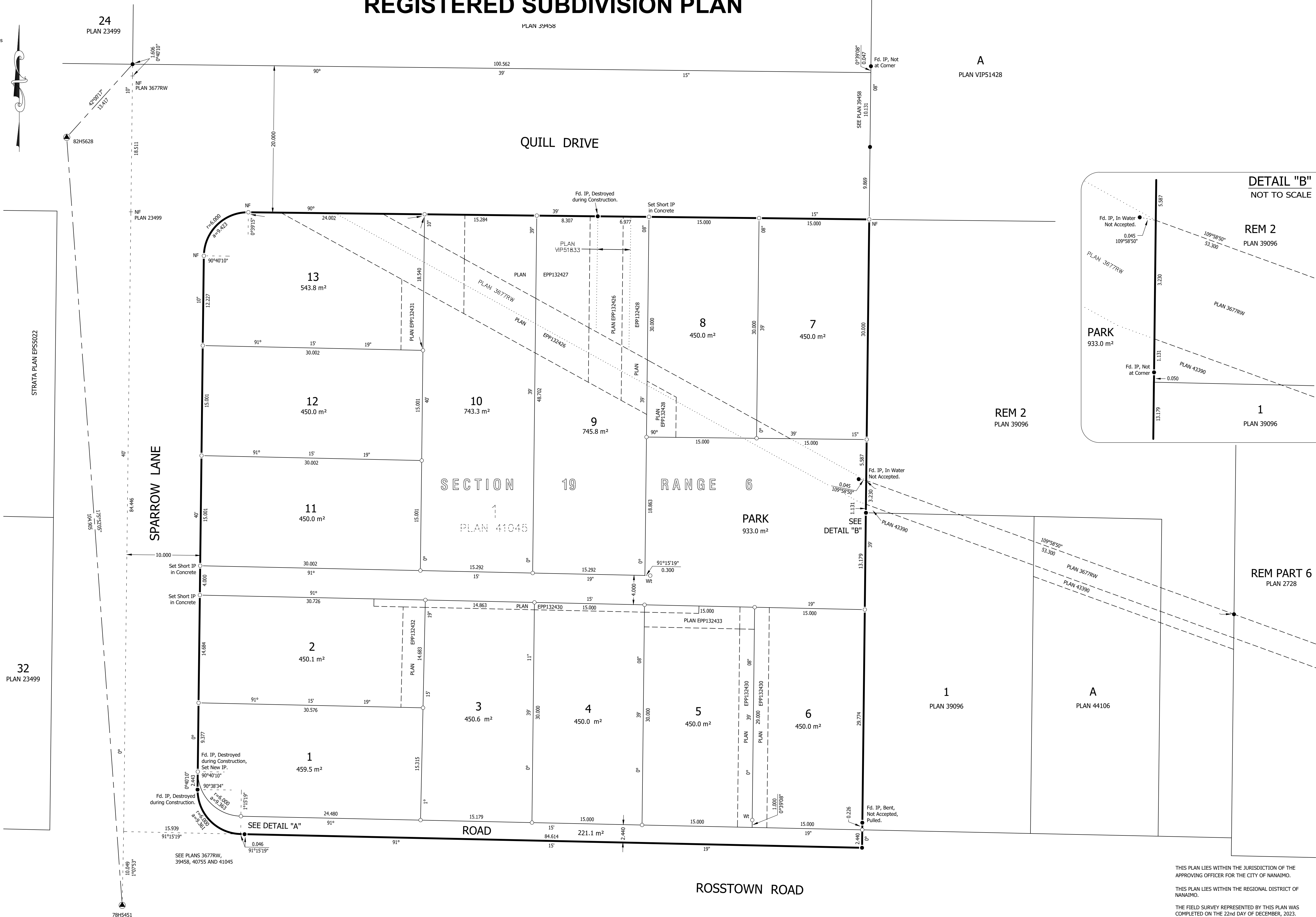
32  
PLAN 23499

Williamson & Associates  
Professional Surveyors  
3088 Barons Road  
Nanaimo B.C. V9T 4B5  
FILE: 20129-3 SUB BASEPLAN: 18050

# ATTACHMENT A REGISTERED SUBDIVISION PLAN

PLAN 39458

PLAN EPP132425



DETAIL "B"  
NOT TO SCALE

REM 2  
PLAN 39096

1  
PLAN 39096

REM PART 6  
PLAN 2728

A  
PLAN 44106

THIS PLAN LIES WITHIN THE JURISDICTION OF THE APPROVING OFFICER FOR THE CITY OF NANAIMO.

THIS PLAN LIES WITHIN THE REGIONAL DISTRICT OF NANAIMO.

THE FIELD SURVEY REPRESENTED BY THIS PLAN WAS COMPLETED ON THE 22nd DAY OF DECEMBER, 2023.

TYLER J. HANSEN, BCLS 985