

# ATTACHMENT H LANDSCAPE PLAN AND DETAILS

## PHASE 2 RESIDENTIAL - - - - - LANDSCAPE CONCEPT - - - - - 6330 McROBB AVENUE, NANAIMO, BC

### DESIGN RATIONALE

#### Overall Concept:

The building at 6330 McRobb has been designed around the existing Arbutus tree on the south side of the property and has become the focal point of the project.

The planting scheme consisting of a typical woodland edge planting design will surround the building, providing a setting which works with the existing tree and the mass of the building.

This planting will consist of a tree layer, coniferous trees (species such as Serbian Spruce) medium sized deciduous trees such as flowering dogwood, a deciduous shrub layer (indigenous plants), and a low evergreen shrub/groundcover layer (indigenous plants). Plants will be selected for hardiness and wildlife (bird and insect) value.

#### The site is divided into three main areas:

1. The Arbutus Garden
2. The Front Entry Garden
3. The Sentinel Streetscape (the Arbutus Garden edge is part of this streetscape)

#### 1. The Arbutus Garden

A private garden, secured by a 4'-0" high metal picket fence with:

- A sunny patio outside the amenity room,
- A winding path through a quiet place of grass and trees with places to sit and read or visit with friends.
- The reinstatement of groundcovers under the arbutus.
- Creation of a bioswale which will be
  - functional, taking the rainwater from the roof and allowing infiltration into the surrounding garden
  - ornamental, it will be an organic 'stream' at the centre of the garden space, running through a lawn
- A planted edge to screen the street

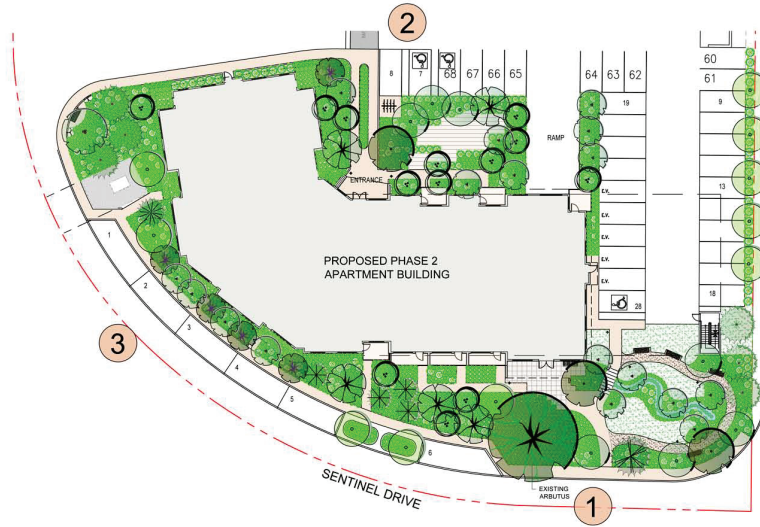
#### 2. Front Entry

- small deciduous trees and groundcovers to accommodate slopes
- a bench at the front door
- bollards to mark pathways
- bike racks

#### 3. The Sentinel Streetscape

The Sentinel buffer area will be planted with a variety of plants forming the woodland edge, see above. This will allow filtered views in and out of the site.

The vegetation is designed to soften the scale of the building, shade and cool the south facing rooms from direct sunlight and provide variety and interest to both residents and passersby along the street.



LANDSCAPE KEY PLAN  
Scale: N.T.S.



### PLANTING SCHEME



conifers



medium deciduous trees



small deciduous trees



deciduous shrubs



evergreen shrubs



low evergreen shrubs

### SITE ELEMENTS



Existing Arbutus tree



boulder from site



metal picket fence



benches



crushes gravel path



lighting bollards



bike racks

### PLANT PALETTE

NOTE - REPLACEMENT TREES:

100 REQUIRED: SEE L0.3

73 PROPOSED: 61 DECIDUOUS, 12 CONIFEROUS

Icon	Key	Qty	Botanical Name	Common Name	Pot Size
<b>Deciduous Trees</b>					
	Ap	13	Acer palmatum	Japanese Maple	2.5m
	Ac	17	Acer circinatum	Vine Maple	10 gall
	Ce	7	Cornus eddis white wonder	Eddies White Wonder Dogwood	4 cm cal
	Ck	6	Cornus kousa	Chinese Dogwood (multistem)	3m. ht
	Fad	5	Fagus sylvatica 'Dawycok Gold'	Dawycok Gold Beech	6 cm cal
	Pp	10	Parrotia persica 'Vanessa'	Upright Persian Ironwood	6 cm cal
	Sjap	3	Styrax japonica	Snowbell Tree	6 cm cal
<b>Coniferous Trees</b>					
	Plv	1	Pinus flexilis vanderwolf	Vanderwolf Pine	2 m ht
	Ph	6	Pinus nigra	Austrian Pine	2 m ht
	PoB	4	Picea omorika Bruns	Serbian Spruce	2m ht
	Ps	1	Pinus sylvestris	Scots Pine	2m ht
<b>Hedging / Shrubs / Grasses / Ferns &amp; Perennials (2000 TOTAL)</b>					
	Ym	100	Yucca media Hicksii	Yew	5 gall
<b>Evergreen Shrubs</b>					
	Ci	490	Choysya ternata	Mexican Orange Blossom	#1
	La		Lavandula angustifolia 'Hidcote'	English Lavender	#1
	Sh		Sarcococca humilis	Sweetbox	#1
	Vd		Viburnum davidi	David's Viburnum	#1
	Vo		Vaccinium ovatum	Evergreen Huckleberry	#1
<b>Deciduous Shrubs</b>					
	Cs	490	Cornus alba sibirica	Red Twigged Dogwood	#1
	Hd		Hedyscym discolor	Ocean Spray	#1
	Rt		Ribes sanguineum	Red Flowering Currant	#1
<b>Low Shrubs</b>					
	Gs		Gaultheria shallon	Salt	#1
	Mh		Mahonia aquifolium	Yell Oregon Grape	#1
	Mn		Mahonia nervosa	Dull Oregon Grape	#1
	Ro		Rosemarinus officinalis	Rosemary	#1
<b>Grasses</b>					
	Hk	490	Hakonechloa macra	Japanese Woodland grass	#1
	Hs		Helictotrichon sempervirens	Blue Owl Grass	#1
	Mt		Miscanthus sinensis yaku jima	Maiden Grass	#1
	Mis		Miscanthus sinensis var. purpurascens	Orange Flame Grass	#1
	Sg		Stipa giganteans	Giant Feather Grass	#1
<b>Ferns</b>					
	At	490	Athyrium filix-femina	Lady Fern	#1
	Bis		Blechnum spicant	Deer Fern	#1
	De		Dryopteris erythrosora	Aurum Fern	#1
	Pim		Polystichum munifolium	Sword Fern	#1
<b>Perennials</b>					
	Am	225	Achillea millefolium	Yarrow	#1
	Co		Coreopsis canadensis	Goldenrod	#1
	St		Symphytum subspicatum	Douglas Aster	#1
<b>Bioswale shrubs / rushes/sedges</b>					
	At	225	Aquilegia formosa	Red Columbine	4" pot
	Aa		Anemone sylvestris	Goat's Beard	1 gall
	Co		Coreopsis	Stough Sedge	#1
	Eu		Euponymus alata compacta	Burning Bush	4" pot
	Ir		Iris ensata	Japanese Iris	1 gall
	Mg		Myrca palea	Sweet Gale	1 gall
	Mm		Mimulus guttatus	Common Monkeyflower	1 gall
	Sid		Sidacea hendersonii	Henderson's Cheekier-mallow	4" pot
	Sm		Scopus microcarpus	Small flowered Butth	#1

NOTE: The plants for this scheme will be chosen from the Plant Palette as appropriate. Not all plants will necessarily be used and others may be substituted depending on availability and suitability. The plant numbers are based on the conceptual plan and may change during the development of the Building Permit drawing.

NOTES:  
ALL GRADES APPROXIMATE;  
TO BE CO-ORDINATED WITH  
CIVIL.

**NOT FOR  
CONSTRUCTION**

#### REVISIONS:

Issued for DP - 2021Jul26

Rev for CoN Comprehensive Letter - 2022Apr11

Rev for CoN Comprehensive Letter of Aug 21 2024 - 2024Aug23

#### CONSULTANT:



#### PROJECT:

6330 McROBB  
NANAIMO, BC

#### SITE LEGAL DESCRIPTION:

RECEIVED  
DP1347  
2024-AUG-26  
CIVIL PLANNING

#### SHEET TITLE:

CONCEPTUAL  
LANDSCAPE  
DESIGN SCHEME

#### SCALE:

AS NOTED JUL. 2. 2021  
DRAWN: DR CHECKED: VJD

#### PROJECT NUMBER:

6330 McROBB 2021

#### DRAWING NUMBER:

L0.1/ DP

#### MUN. DWG#:

PHASE 2 RESIDENTIAL - - - - - LANDSCAPE CONCEPT - - - - - 6330 McROBB AVENUE, NANAIMO, BC

NOTES:  
ALL GRADES APPROXIMATE;  
TO BE CO-ORDINATED WITH  
CIVIL.

See L0.1 for Plant Palette



REVISIONS:

- Issued for DP - 2021Jul26
- Rev for CoN Comprehensive Letter - 2022Apr11
- Rev for CoN Comprehensive Letter of Aug 21 2024 - 2024Aug23

CONSULTANT:



PROJECT:

6330 McROBB  
NANAIMO, BC

SITE LEGAL DESCRIPTION:

**RECEIVED**  
**DP1347**  
**2024-AUG-26**  
Current Planning

SHEET TITLE:

**CONCEPTUAL  
LANDSCAPE  
PLAN**

SCALE: DATE:

AS NOTED JUL. 2, 2021

DRAWN: CHECKED:

DR VJD

PROJECT NUMBER:

6330 McROBB 2021

DRAWING NUMBER:

**L0.2/ DP**

MUN. DWG#:



Existing Arbutus tree



CONCEPTUAL LANDSCAPE PLAN  
Scale: 1:150

