


CITY OF NANAIMO  
THE HARBOUR CITY

# Accessibility Audits Update

*Parks, Recreation & Culture*



CITY OF NANAIMO  
THE HARBOUR CITY

## History

- Nanaimo Aquatic Center, Frank Crane Arena and Bowen Park Complex were chosen for accessibility audits an auditor from the Rick Hansen Foundation (the “RHF”). The auditor made suggestions to improve each facility’s accessibility.
- The RHF offered one-time funding to assist with identified upgrades.
- The RHF auditor will return and re-assess the improvements.
- The City will then receive recognition on the RHF website and will be given visual placards for the facilities.
- Any remaining grant funding will be used on future accessibility projects.

*Parks, Recreation & Culture*

## Nanaimo Aquatic Center

### Areas for Improvement – Consideration for Installing:

- Additional markings at the glazed doors and walls to reduce glare and improve identification for those with vision issues. **In progress.**
- Additional directional signage at reception area and adjacent hallway. **Completed.**
- Braille, raised text and symbols at accessible locations to improve access to washrooms and offices for those who may be visually impaired. **Completed.**
- Additional visual fire alarms to alert people with hearing loss of an emergency in accessible washroom and shower areas. **Completed.**

*Parks, Recreation & Culture*

## Frank Crane Arena

### Key Areas of Improvement Installing or Improving:

- Accessible parking stalls, including markings for a safe pedestrian route to the facility. **Completed.**
- Additional directional signage at the reception area and adjacent hallway. **Completed.**
- Wayfinding signage at the lobby/reception area to all spaces, such as washrooms, elevator, and interior services. **Completed.**
- Braille, raised text and symbols at accessible locations to improve access to washrooms and offices for those who may have reduced vision or blindness. **Completed.**

*Parks, Recreation & Culture*

## Bowen Park Complex

### Key Areas of Improvement – Consider Installing or Replacing:

- Exterior directional signage to improve wayfinding for everyone. **Complete.**
- Tactile attention indicators at the top of interior and exterior staircases to alert those with vision issues or blindness. **Complete.**
- Additional directional signage at the reception area and adjacent hallway. **Complete.**
- Handrails and seating at long hallways to assist those with mobility issues. **In progress.**
- Knob-style door handles with lever type. **In Progress.**
- Visual fire alarms where needed to alert those with hearing issues or deafness. **Complete.**

*Parks, Recreation & Culture*

## Next Phase of Improvements

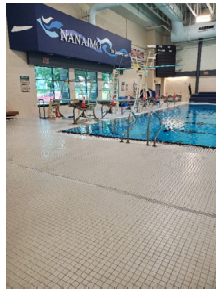
- A no-slip coating will be added to the surface of the pool deck, shower areas and ramps at the Nanaimo Aquatic Center. **Complete.**
- Extra way-finding blade signage for the three facilities to ensure adequate coverage. **Complete.**
- Four wheelchairs for moving patrons with disabilities in the Nanaimo Aquatic Center and the Frank Crane Arena. **Complete.**
- Automatic door openers at the Frank Crane Arena. **Complete.**

*Parks, Recreation & Culture*

## Final Projects



Automatic door  
openers at Frank  
Crane Arena



Anti-slip treatment on all  
surfaces at Nanaimo  
Aquatic Center



New Wheel Chairs

*Parks, Recreation & Culture*

## Future Assessments

- We recognize that this is only the start of assessing our facilities and taking steps to ensuring they are safe and enjoyable for all patrons.
- The following list is all of the public access facilities and parks that the City of Nanaimo manages.

**Oliver Woods Community Center**

Beban Pool

Cliff McNabb Arena

**Nanaimo Ice Center**

Nanaimo Museum

Military Museum

City Hall

Port Theatre

Rotary Field House

Kin Hut

Centennial Building

Beban House

Kin Pool

Art Gallery

Visitor Center

Animal Shelter

Red locations are  
audited facilities.

*Parks, Recreation & Culture*



## Destination Parks

Colliery Dam Park
Departure Bay Centennial Park
Diver Lake Park
Harewood Centennial Park
Kin Beach Park
Loudon Park & Walkway
Lost Lake Park

Piper's Lagoon Park
<b>Westwood Lake Park</b>
Protection Island Parks
Maffeo Sutton/Swy-A-Lana/Spirit Square
Neck Point Park
Third Street/Buttertubs/Jingle Pot Marsh
Linley Valley Park

Red locations are audited or soon to be audited facilities

*Parks, Recreation & Culture*



## Downtown Parks

Wesley/Piper/Italian Fountain/Dallas/Conference
Kiwanis/Lions Square/Pearson/Salish/Townsite
Waddington/Chinese Memorial Gardens
Elks/Georgia/Newcastle/Lookout/Bastion Square
McGregor/Anchor Way (incl. remainder) of Pioneer Plaza
Front St. Planter
Durham/Pine & Fitzwilliam Sign/Wellcox Walkway

*Parks, Recreation & Culture*




## Sports Fields & Playfields

Barney Moriez Park	Groveland Gyro Park	Serauxmen Park (Third St. Fields)
Beban Four Fields & Artificial Fields	Harry Whipper Park/ Mansfield Park	<b>Serauxmen Stadium</b>
Bowen West	May Richards Bennett Sports Fields	Rotary Bowl
Caledonia Park / Comox Park	Old Harewood School Sports Field	Harewood Multi-Use Facility
Departure Bay Centennial Park	Pleasant Valley Park/ Robins Park	NDSS Community Artificial Field
Deverill Square Park	Sherry Fields (formerly Harewood Centennial)	
Diver Lake Park / Elaine Hamilton Park	Sid Clark Gyro Park	

Red locations are audited or soon to be audited facilities

*Parks, Recreation & Culture*



## Future Assessments

- As previously discussed two staff members received specialized training from the RHF to perform assessments. These staff members will be able to perform assessments instead of bringing in outside contractors.
- The intention is to systematically audit all of the City of Nanaimo facilities and parks and make improvements where needed.

*Parks, Recreation & Culture*



## Recommended Facilities That Will Receive Assessments In 2024

- Oliver Woods Community Center
- Beban Pool
- Cliff McNabb Arena
- Nanaimo Ice Center
- Nanaimo Museum
- Military Museum
- City Hall

Red locations are audited or soon to be audited facilities

*Parks, Recreation & Culture*



Thank You.

Questions?

*Parks, Recreation & Culture*