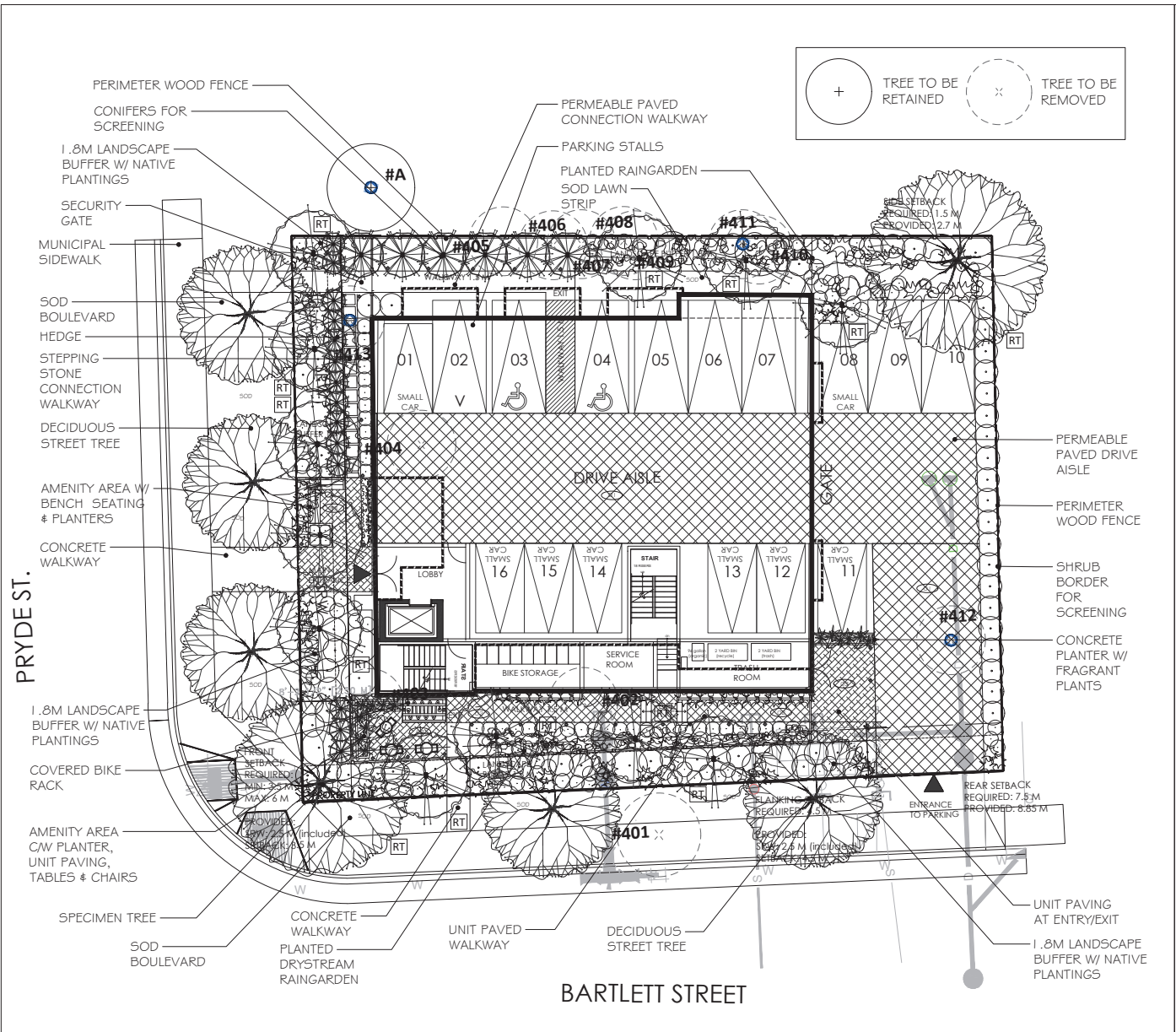
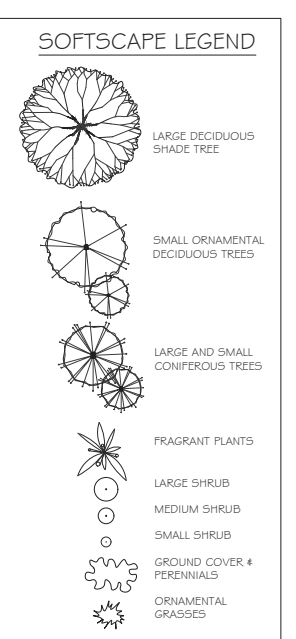


# ATTACHMENT F LANDSCAPE PLAN AND DETAILS



### SUGGESTED PLANT LIST

Key	Common Name	Latin Name	Size
<b>Trees</b>	Japanese Maple	Acer palmatum var. 'Bloodgood'	60m Ctl.
	Acer Incense Pine	Acer insigne var. 'Pendula'	60m Ctl.
	Honey Locust	Gleditsia triacanthos var. 'Inade Master'	60m Ctl.
	Columnar Pinyon Pine	Pinus inflata var. 'Stout's Pencil'	60m Ctl.
	Columnar Yew	Taxus canadensis var. 'Column King'	60m Ctl.
	Kalmia Tree	Camellia japonica	60m Ctl.
	Japanese Flowering Cherry	Prunus serrulata var. 'Kakemono'	60m Ctl.
	Japanese Snowbell	Bayera japonica	60m Ctl.
<b>Large Shrubs</b>	City of the Valley Shrub (P)	Panicum japonicum var. 'Forest Plant'	#5 Pot
	Rhododendron (R)	Rhododendron var. 'Macrophyllum'	#5 Pot
	Rhododendron	Rhododendron var. 'Juno Krieger'	#5 Pot
	Strawberry Candy	Thymus occidentalis var. 'Strawberry Candy'	1.5m Ht.
	Chicago Grape	Melaleuca alternifolia	#5 Pot
<b>Medium Shrubs</b>	Dwarf Oregon Grape (R,P,F)	Mahonia aquifolium var. 'Compacta'	#2 Pot
	Rhododendron	Rhododendron var. 'Shogun'	#2 Pot
	Rose	Rosa rugosa var. 'Kung Edward'	#2 Pot
	Rhododendron	Rhododendron var. 'Tortuosum'	#2 Pot
	Dwarf Viburnum (P)	Dielsia Viburnum	#2 Pot
	Drift Burning Bush	Euonymus alata var. 'Prestige'	#2 Pot
	Japanese Nandina	Nandina domestica var. 'Thalictroides'	#2 Pot
	Bloomerang Lilac	Syringa var. 'Bloomerang'	#2 Pot
	Deciduous Azalea	Azalea var. 'Western Light'	#2 Pot
	Spice	Salvia	#1 Pot
	Cypress	Cyperus var. 'Willow Goldenrod'	#2 Pot
	Small Laurel Lavender	Prunella paniculata var. 'Crispa Lavender'	#2 Pot
	Fabrica Vine	Ficus rubra cv. 'N.M. Eddler'	1.5m Ht.
<b>Small Shrubs</b>	Crochod Eucalyptus	Eucalyptus fortunei var. 'Emerald Gold'	#1 Pot
	Dwarf Lily of the Valley Shrub (P)	Panicum japonicum var. 'Petaluza'	#1 Pot
	Dwarf Palm (R)	Palmetto reclinata	#1 Pot
	Dwarf Red Twig Dogwood (R)	Cornus sericea 'Purpa Fire'	#1 Pot
	Japanese Spirea (P)	Spirea japonica 'Shirabana'	#1 Pot
	Compact Oregon Grape (P,M)	Mahonia repens	#1 Pot
	Gold Flame Spirea (P)	Spirea humilis var. 'Gold Flame'	#1 Pot
	Dwarf Falae Holly	Ilex coccinea compacta	#1 Pot
	Dwarf Rhododendron	Rhododendron var. 'Snow Bell' #1-Jack	#1 Pot
<b>Groundcover</b>	Burner's Bg	Heuchera filix-mas var. 'Frosty Jade'	SP4
	Cornus	Cornus canadensis	SP4
	Gallium	Gaillardia pinnatifida	SP4
<b>Mosses</b>	Clematis sp. (P)	Clematis vitalba	#5 Pot
<b>Perennials</b>	Dwarf Daylily (P)	Hemerocallis var. 'Stella d'Or'	SP5
	Coral Bells (R)	Heuchera macrostachya var. 'Dorsetian Bronze'	SP5
	Winter Lin	Hebe xanthophylla var. 'Wintergreen'	SP5
	Japanese Sedge	Carex nemorum 'Ice Dance'	SP5
	Blue Fescue	Festuca ovina glauca 'Eggs Blue'	SP5
	Cornus Bark (R)	Janet's Blue	SP5
	Red Spider	Carex testacea	SP5
	Lythrum	Lythrum sp.	SP5
	Mosses	Mosses	SP5
	Pink	Pink	SP5
	White	White	SP5
<b>Notes:</b>	P = Foliaceous N = Native W = Wood Bark All landscape work to conform with B.C.S.L.A. / B.C.M.T.A. standard specification. All areas to be irrigated with an automatic underground system.		



### PAVER TYPES

- 01 TYPE: RIVER ROCK  
COLOUR: VICTORIAN  
PATTERN: JACK-ON-JACK  
SIZE: 24x24
- 02 TYPE: V55  
COLOUR: 50% DARK GREY, 50% GREY  
PATTERN: STRETCHER BOND, PARALLEL TO BUILDING FACE  
SIZE: 3' x 12' x 4.3"
- 03 TYPE: CORTEZ SLAB  
COLOUR: SANDALWOOD  
PATTERN: JACK-ON-JACK  
SIZE: 18' x 18'

SUPPLIER: BELGARD PAVERS

### LIGHTING LEGEND

◆ BOLLARD LIGHTS (x17)  
DESC.: 2 ARM CONTEMPORARY PATH LIGHT  
MODEL: 15844AZT  
COLOUR: BRONZE METALLIC  
CONTACT: KICHLER LIGHTING

BENCH (x4)  
MODEL: ARCATO BENCH  
SIZE: 24' x 74' x 32', BACKED SURFACE  
MATERIAL: WOODGRAIN SERIES  
COLOUR: WOOD - JARRAH, POWDERCOAT METAL - BRONZE METALLIC  
CONTACT: LANDSCAPE FORMS

SHORT TERM BIKE RACKS (x5)  
MODEL: EMERSON BIKE RACK  
NOTE: MOUNTED TO CONCRETE PAD # PARALLEL TO BUILDING FACE.  
COLOUR: NEUTRAL SERIES - BRONZE METALLIC  
SUPPLIER: LANDSCAPE FORMS

### TREE REPLACEMENT PLAN

# REPLACEMENT TREES REQUIRED (ON SITE) = 12  
# REPLACEMENT TREES PROVIDED (ON SITE) = 12

NOTE: REFER TO SHEET L2 FOR FULL PLANTING PLAN

RT INDICATES REPLACEMENT TREE

**4★ SITE**  
LANDSCAPE ARCHITECTURE  
AND SITE PLANNING 250.508.7885

THE DRAWINGS, DESIGN IDEAS AND FOR FEES TO BE PAID. UNLESS OTHERWISE STATED, HEREIN ARE THE EXCLUSIVE PROPERTY OF 4★ SITE LANDSCAPE ARCHITECTURE. ALL CONSULTING, COPY AND PREPARED WORKS ARE HEREBY RESERVED. NO PART OF THIS DRAWING OR ANY INFORMATION CONTAINED HEREIN IS TO BE REPRODUCED, COPIED, EITHER WHOLLY OR IN PART, WITHOUT THE WRITTEN CONSENT OF 4★ SITE LANDSCAPE ARCHITECTURE. THIS PARTY SHALL NOT HOLD FOR THE LANDSCAPE ARCHITECTURE RESPONSIBLE.

ARCH. STAMP

**116 PRYDE APARTMENTS**  
NANAIMO, BC

**RECEIVED**  
DP1342  
2024-AUG-06  
Current Planning

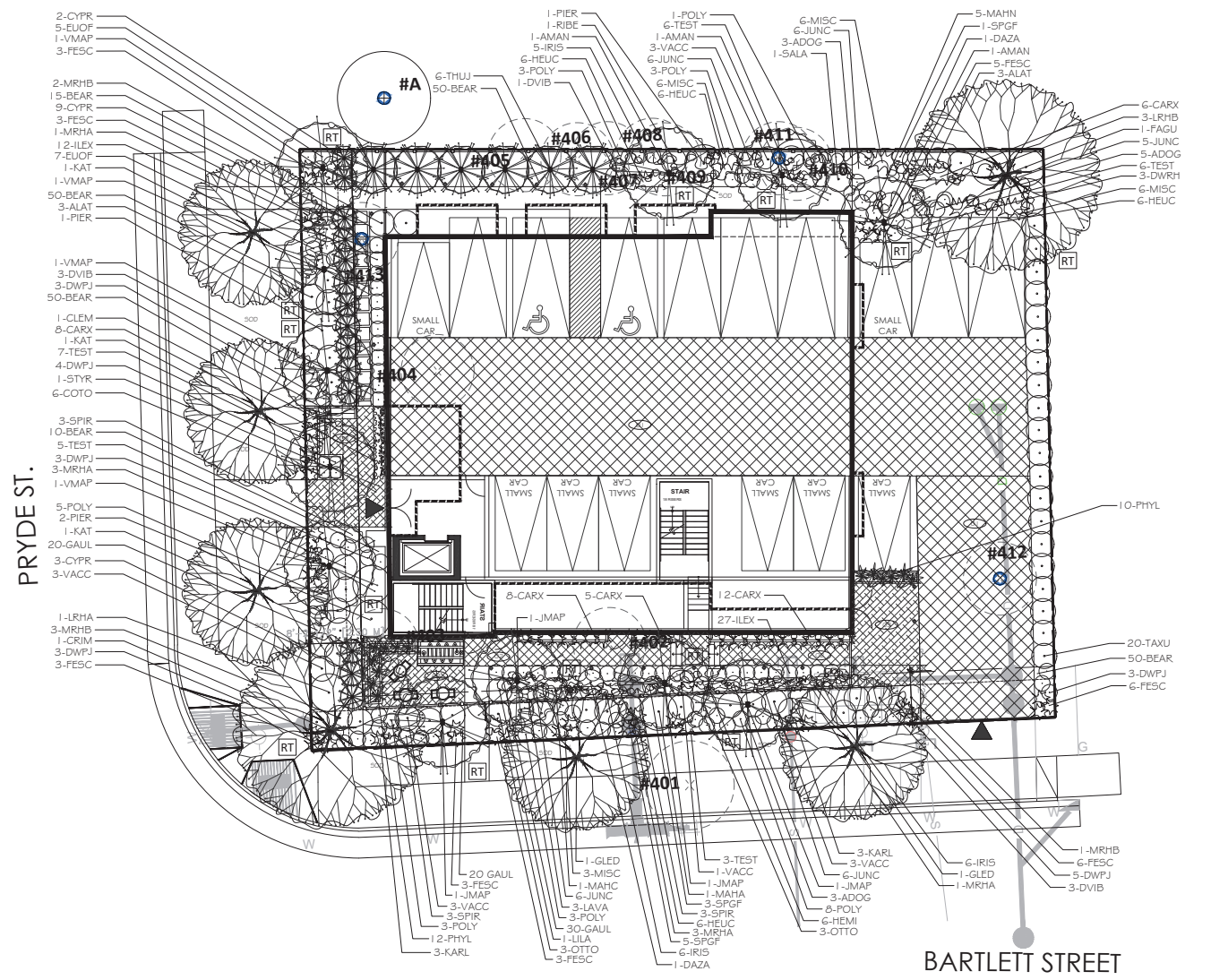
REV. DATE	NUMBER	DESCRIPTION
11/28/2023	01	PRELIM LANDSCAPE PLAN
08/28/2024	02	REVISED LANDSCAPE PLAN
JULY 15, 2024	03	REVISED FOR PCB SUBMISSION

CLIENT: BRYAN EDWARDS

DATE: JULY 15, 2024  
SCALE: 1:100  
LANDSCAPE CONCEPT PLAN

DRAWN BY: RF

**L1**



PLANT LIST

	Key	Quantity	Common Name	Latin Name	Size	
Trees	JMAP	4	Japanese Maple	Acer palmatum var. 'Bloodgood'	6cm Cal.	
	VMAP	4	Vine Maple (N)	Acer circinnatum	6cm Cal.	
	GLED	2	Honey Locust	Gleditsia Incarthos var. 'Shade Master'	6cm Cal.	
	FAGU	1	Columnar Purple Beech	Fagus sylvatica var. 'Dawyko Purple'	6cm Cal.	
	CRIM	1	Crimson King Maple	Acer platanoides var. 'Crimson King'	5cm Cal.	
	KAT	3	Katsura Tree	Cercidiphyllum japonicum	5cm Cal.	
	AMAN	3	Amanogawa Flowering Cherry	Prunus serrulata var. 'Amanogawa'	6cm Cal.	
	STYR	1	Japanese Snowbell	Styrax japonica	6cm Cal.	
	Large Shrubs	PIER	4	Lily of the Valley Shrub (F)	Pieris japonica var. 'Forest Flame'	#5 Pot
		LRHA	1	Rhododendron var. 'Macrophyllum'	Rhododendron var. 'Macrophyllum'	#5 Pot
LRHB		3	Rhododendron	Rhododendron var. 'Anah Kruschke'	#5 Pot	
THUJ		6	Upright Cedar	Thuja occidentalis var. 'Smaragd'	1.5m Ht.	
MAHA		1	Oregon Grape	Mahonia aquifolium	#5 Pot	
Medium Shrubs		MAHC	1	Dwarf Oregon Grape (N,P,F)	Mahonia aquifolium var. 'Compacta'	#2 Pot
		MRHA	8	Rhododendron	Rhododendron var. 'Unalut'	#2 Pot
		RIBE	1	Red Flowering Currant (N,P)	Ribes sanguineum var. 'King Edward'	#2 Pot
		MRHB	6	Rhododendron	Rhododendron var. 'Fantastica'	#2 Pot
		DVIB	7	David Viburnum (F)	Davidi Viburnum	#2 Pot
	ALAT	6	Dwarf Burning Bush	Euonymus alata var. 'Fireball'	#2 Pot	
	VACC	13	Evergreen Huckleberry	Vaccinium ovatum var. 'Thunderbird'	#2 Pot	
	LILA	1	Blooming Lilac	Syringa var. 'Bloomingang'	#2 Pot	
	DAZA	2	Deciduous azalea	Azalea x 'Western Lights'	#2 Pot	
	SALA	1	Salal	Gaultheria shallon	#1 Pot	
Small Shrubs	CYPR	14	Upright Cypress	Cupressus var. 'Wilma Goldcrest'	#2 Pot	
	OTTO	6	Otto Luyken Laurel	Prunus laurocerasus var. 'Otto Luyken'	#2 Pot	
	TAXU	20	Eddie's Yew	Taxus x media var. 'H.M. Eddie'	1.5m Ht.	
	EUOY	12	Creeeping Euonymus	Euonymus fortunei var. 'Emerald & Gold'	#1 Pot	
	DWVJ	21	Dwarf Lily of the Valley Shrub (F)	Pieris japonica var. 'Fetidae'	#1 Pot	
	POLY	26	Sword Fern (N)	Polystichum montium	#1 Pot	
	ADOG	11	Dwarf Red Tang Dogwood (N)	Cornus sericea 'Arctic Fire'	#1 Pot	
	SPIR	9	Shirobana Spirea (F)	Spirea Japonica 'Shirobana'	#1 Pot	
	MAHN	5	Cascade Oregon Grape (F,N)	Mahonia nervosa	#1 Pot	
	SPGF	9	Gold Flame Spirea (F)	Spirea bumalda var. 'Gold Flame'	#1 Pot	
Ground Covers	BEAR	225	Bearberry (N)	Arctostaphylos uva-ursi var. 'Vancouver Jade'	SP4	
	COTO	6	Creeeping Cotoneaster (F)	Cotoneaster dammeri	SP4	
	GAIL	70	Wintergreen (N)	Gaultheria procumbens	SP4	
	CLEM	1	Clematis sp. (F)	Clematis Vine	#5 Pot	
	Perennials & Grasses	HEMI	6	Dwarf Daylily (F)	Hemerocallis var. 'Stella d'Oro'	SP5
		HEUC	24	Coral Bells (N)	Heuchera micrantha var. 'Bressingham Bronze'	SP5
		IRIS	17	Sweet Iris	Iris pallida var. 'Aureo -Varegata'	SP5
		CARX	39	Japanese Sedge	Carex morrowii 'Ice Dance'	SP5
		FESC	31	Blue Fescue	Festuca ovina glauca 'Elijah Blue'	#1 Pot
		JUNC	29	Common Rush (N)	Juncus effusus	SP5
TEST		27	Flame Sedge	Carex testacea	#1 Pot	
LAVA		3	Lavender (F,P)	Lavandula angustifolia	#1 Pot	
MISC		21	Maiden Hair Grass	Miscanthus sinensis	SP5	
KARL		6	Feather Reed Grass	Calamagrostis acutifolia var. 'Karl Foerster'	SP5	
PHYLL	22	Golden Bamboo	Phyllocladus aurea	#1 Pot		

Notes:  
 - \*P - Pollinator \*N - Native \*F - Food Bearing  
 - All landscape work to conform with B.C.S.L.A. / B.C.N.T.A. standard specification.  
 - All areas to be irrigated with an automatic underground system.



THE DRAWINGS, DESIGN IDEAS AND REVISIONS THEREON ARE THE SOLE PROPERTY OF 4★SITE LANDSCAPE ARCHITECTURE AND SITE PLANNING. ALL INFORMATION CONTAINED HEREIN IS FOR THE EXCLUSIVE USE OF THE CLIENT AND IS NOT TO BE REPRODUCED, COPIED, OR TRANSMITTED IN ANY FORM OR BY ANY MEANS, ELECTRONIC OR MECHANICAL, INCLUDING PHOTOCOPYING, RECORDING, OR BY ANY INFORMATION STORAGE AND RETRIEVAL SYSTEM, WITHOUT THE EXPRESS WRITTEN CONSENT OF 4★SITE LANDSCAPE ARCHITECTURE AND SITE PLANNING. THIS DRAWING IS A PRELIMINARY DESIGN AND IS NOT TO BE USED FOR CONSTRUCTION.

ARCH. STAMP

116 PRYDE APARTMENTS  
NANAIMO, BC

RECEIVED  
**DP1342**  
**2024-AUG-06**  
 Current Planning

CLIENT

BRYN EDWARDS

REV. DATE	NUMBER	DESCRIPTION
APR 25, 2024	01	PRELIMINARY LANDSCAPE PLAN
MAY 28, 2024	02	REVISED LANDSCAPE PLAN
JULY 15, 2024	03	REVISED SP. PLAN FOR SUBMISSION

DATE: JULY 15, 2024

SCALE: 1:100

PLANTING PLAN

L2

DRAWN BY: RF