

1

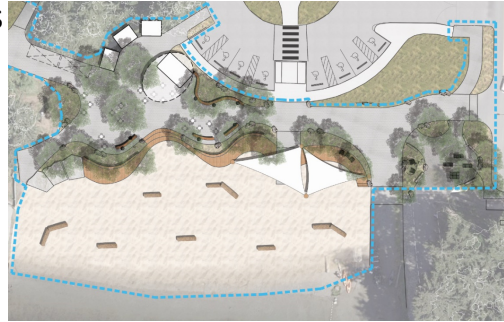


2

This Project

- This Phase of Upgrades Includes:

- Expanded beach area
- Pedestrian and active transportation connections
- Expanded shade
- Places to connect with community and nature
- Washrooms

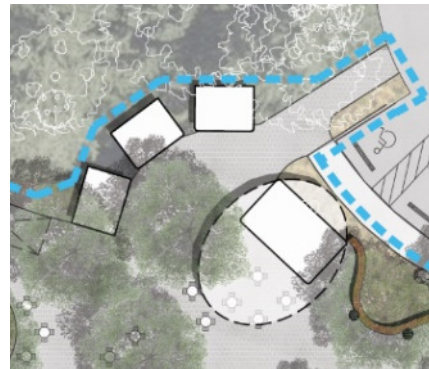


3

Planning Washrooms

- Balancing:

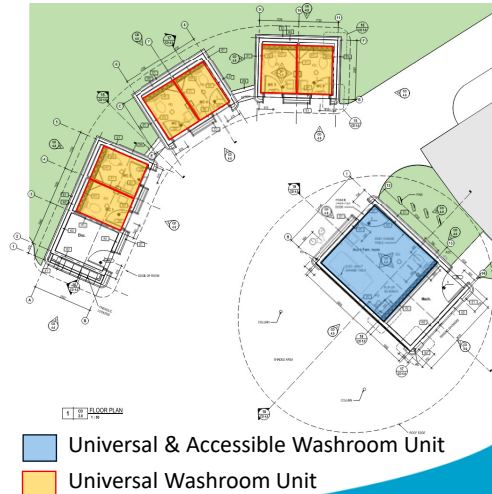
- Current park user needs
- Future park user needs
- Available space
- Available budget
- Building code requirements and accessibility design best practices



4

Planning Washrooms

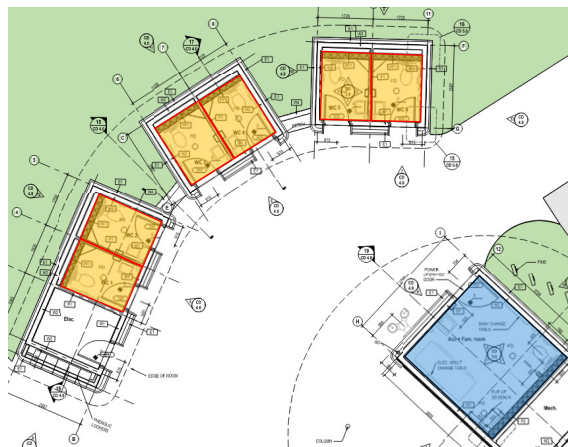
- Key elements considered:
 - “Occupancy Load” of 200 people
 - BCBC requires single accessible washroom
 - CSA 651 does not specify number of units
 - ADA 1:20 units for this type of application



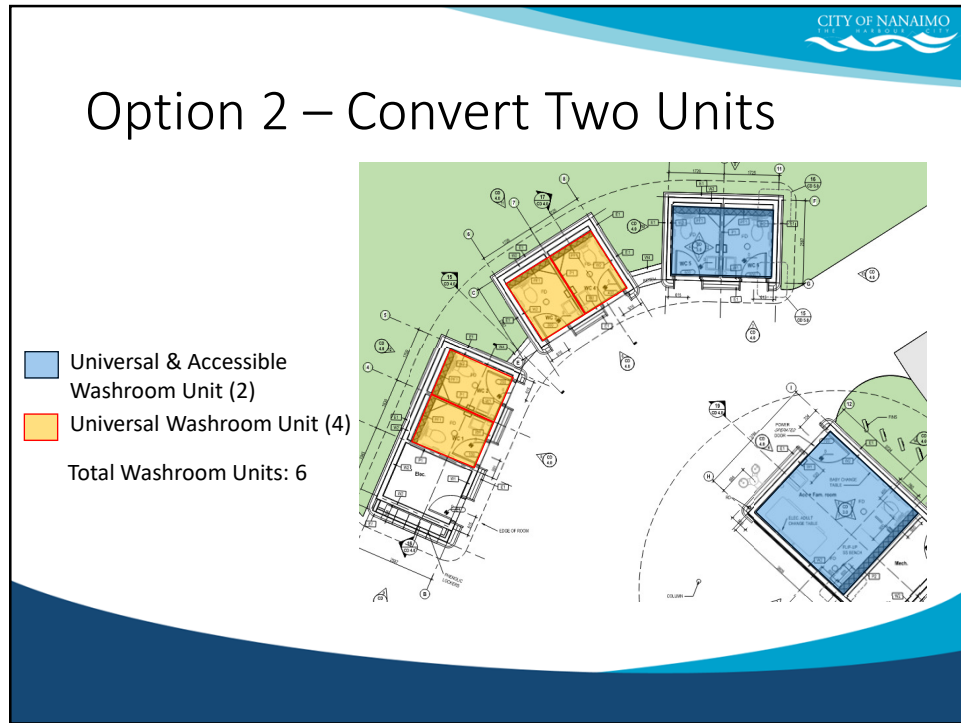
5

Option 1 - Current Plan

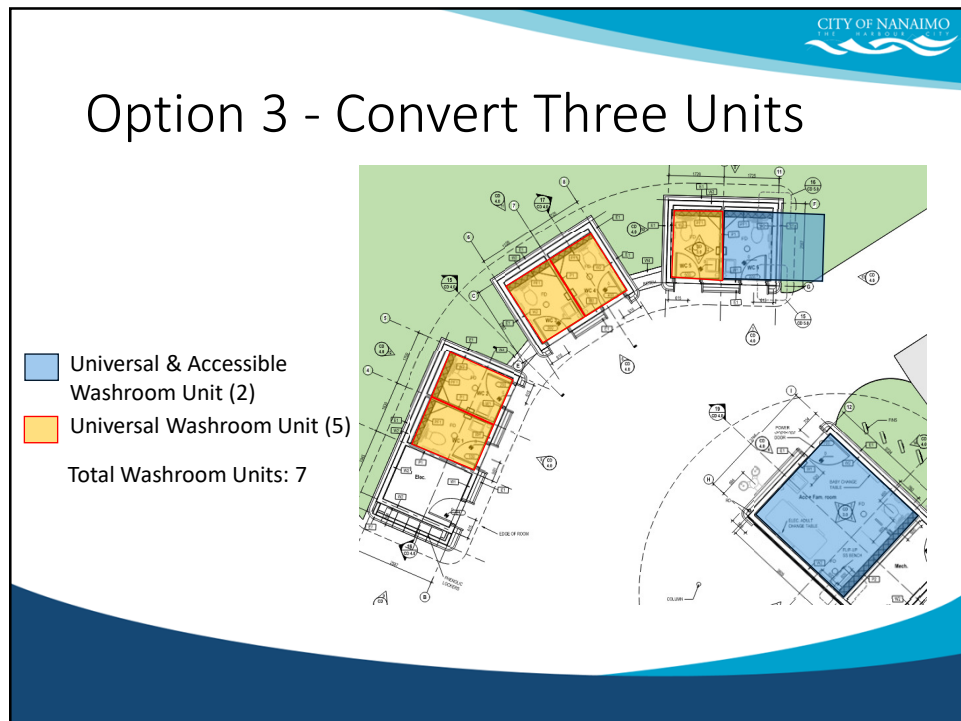
- Universal & Accessible Washroom Unit (1)
 - Universal Washroom Unit (6)
- Total Washroom Units: 7



6



7



8

