

# Westwood Lake Park Accessibility Review

Advisory Committee on Accessibility and Inclusiveness  
Organized by the RHFAC Standard

the  
**TULA**  
project



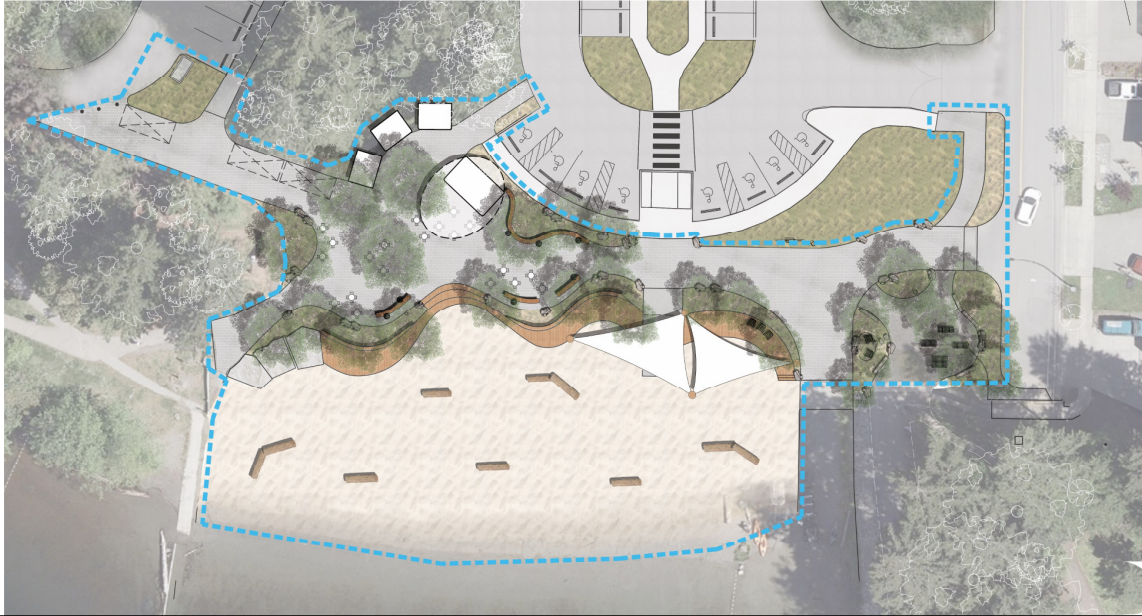
1

## RHFAC – Categorical Review

1. Site Plan Overview
2. Vehicular Access
3. Exterior Approach and Entrance
4. Exterior Surfacing
5. Interior Circulation
6. Interior Services / Environment, and Sanitary Facilities
7. Wayfinding and Signage

2

## 1. Site Plan Overview



3

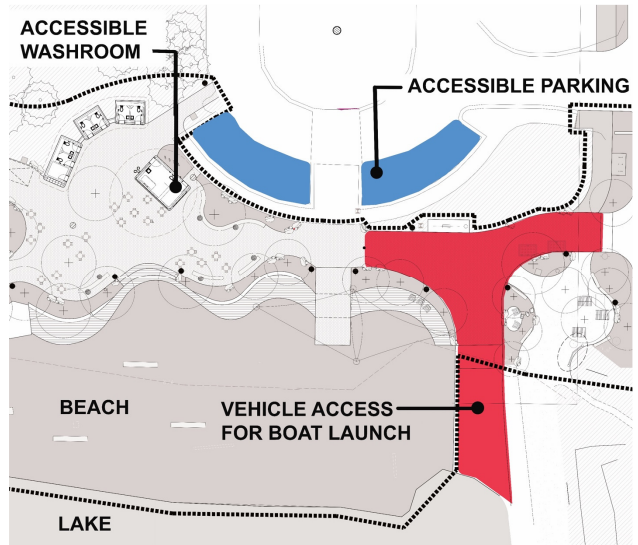
## 1. Site Plan Overview

- Universally accessible and gender neutral washrooms
- Accessible pathways provided to all facilities and amenities onsite
- Multiple accessible access options to trails, beach, and lake
- Tactile wayfinding and information signage
- Wide pathways with no obstructions
- Dispersed seating opportunities
- Space provided for people using mobility aid devices to sit alongside companions
- Clear spaces adjacent to seating provided for service dogs
- Overhead shelter integrated for weather protection
- Trees and shade sails integrated to provide shade

4

## 2. Vehicular Access

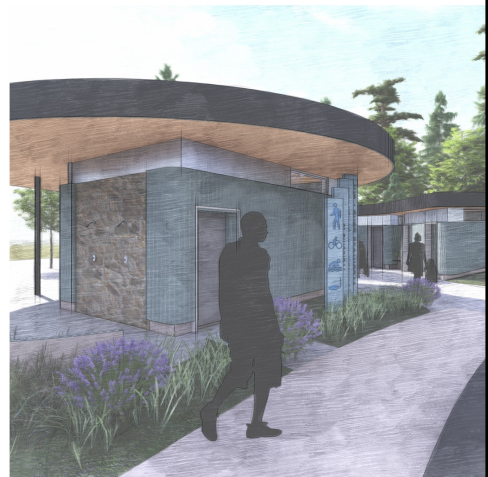
- Clear signage
- Accessible parking at park entrance
- Parking lot can accommodate navigation for handyDART and buses
- Passenger drop off and pick up
- Curbless environment with accessible slopes
- Safe pedestrian pathways in parking lot
- Tabled pedestrian crosswalk at park entry
- Public Transit to Arbot Road
- Vehicular access within project boundary limited to boat launch area



5

## 3. Exterior Approach

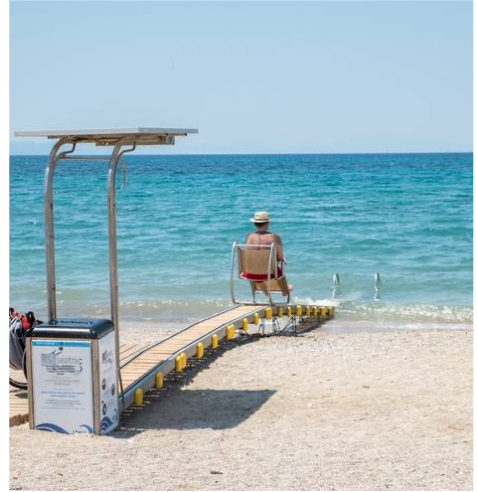
- Wayfinding signage with clear graphics and braille
- Clear sightlines to all areas – CPTED Principals
- Seating and rest areas located throughout the park
- Universally accessible site furniture
- All slopes under 2.5%
- All ramps under 8.3%
- 3m width access ramp to beach consists of two 3.5m length ramps with an intermediate landing
- Ramps incorporate flat landings and handrails



6

### 3. Exterior Approach – Future Proofing

- Design accounts for future accessible water entry
- Design accounts for future accessible observation dock



7

### 3. Exterior Approach and Entrance



8



## 4. Exterior Surfacing – Accessible Pavers

- Best practice design, construction, and maintenance will be implemented
- Project team is specifying a paver that has passed rigorous accessibility testing

ITEM	WESTWOOD SPECIFICATION	ACCESSIBLE STANDARD
Belgard Paver	Compliant	ADA, ACA, and BC Building Accessibility Handbook
Space between pavers	3 mm	13 mm
Change in height	3.2 mm	6.4 mm
Comfort test	Compliant	Wheelchair Pathway Roughness Index (WPRI) / ASTM E3028
Paver chamfer	Compliant: 3mm chamfer	WPRI – 3mm
Slip resistance	Compliant	Ansi – A137.1 / ASTM C 1028



9

## 4. Exterior Surfacing – Continued

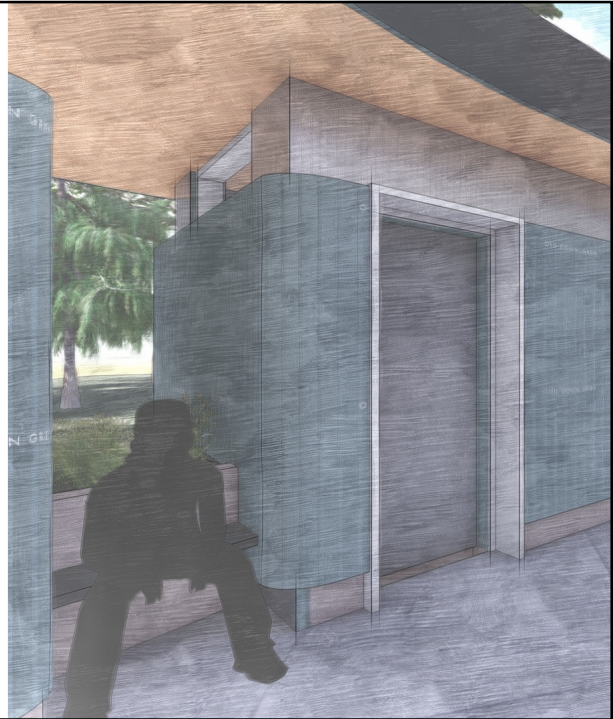
- Paver surfaces provide higher performance over time
- Maintenance over time is easier and less expensive
- Research confirms lower car speeds on pavers than on asphalt and concrete surfacing



10

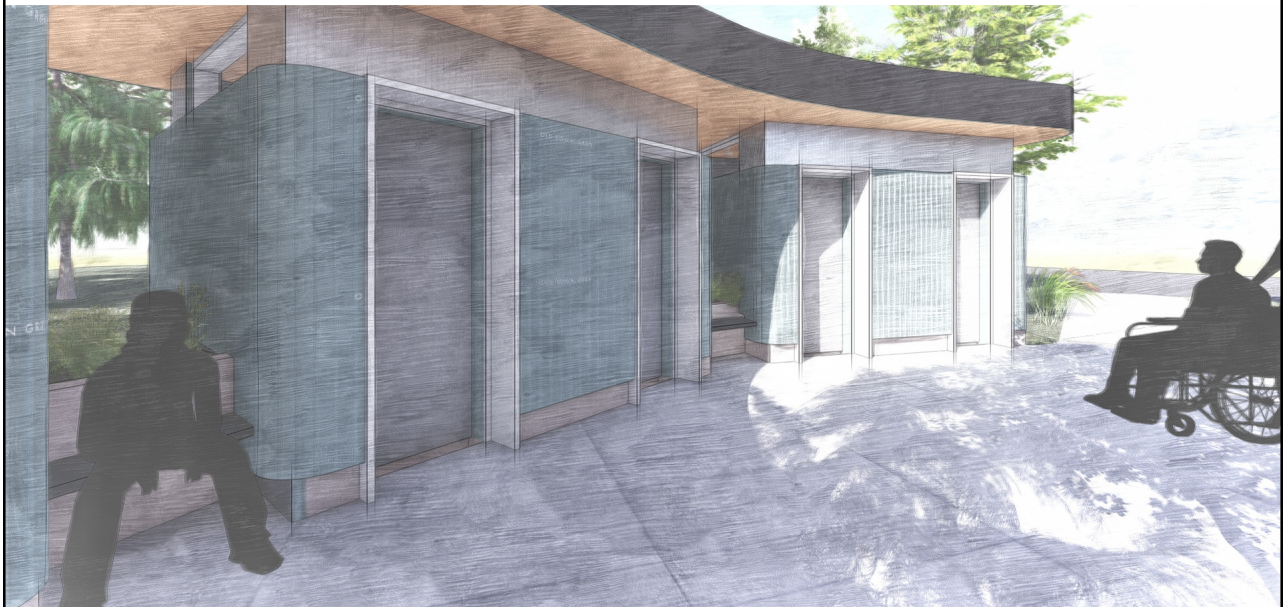
## 5. Interior Circulation

- Power operated door for the Universal Washroom
- Seating and Rest Areas – adjacent to washrooms and shower area
- Low slope approach to all building entrances, on accessible pavers
- Visual contrast of pathway and doors
- Well illuminated entrances
- Accessible water bottle and drinking fountain with dog bowl



11

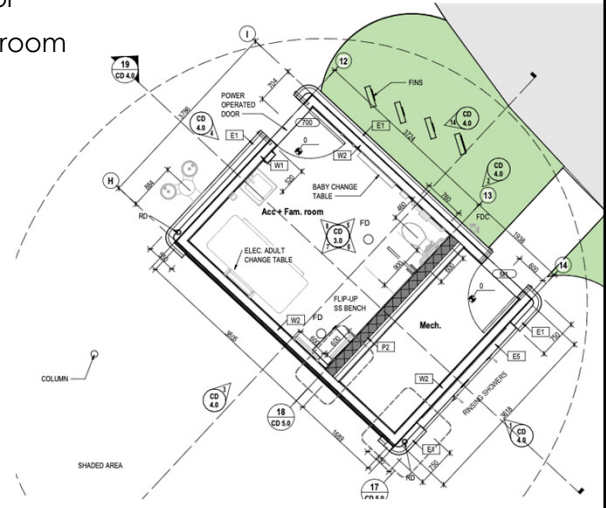
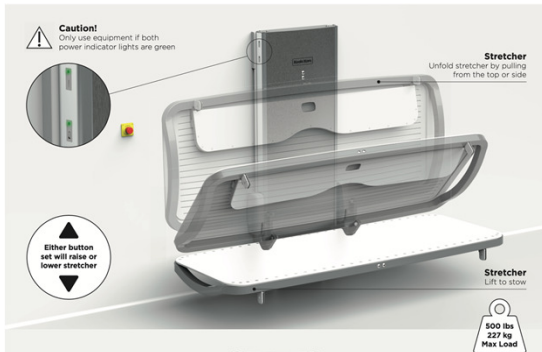
## 5. Interior Circulation



12

## 6. Interior Services / Environment, and Sanitary Facilities

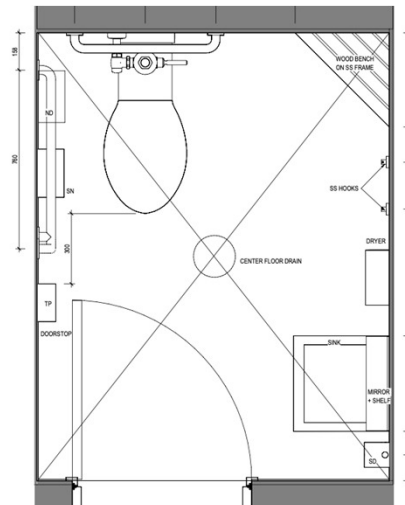
- Universal Washroom with Power operated door
- Universal washroom with adult change table, room for families/assistants, future roll-in shower etc.



13

## 6. Interior Services, Interior Environment, and Sanitary Facilities

- Color contrast finishes between door, wall, and floor
- Well illuminated stalls (natural and superficial lighting)
- Individual stalls with complete acoustic separation support neurodiverse and acoustically sensitive users
- Gender-inclusive washrooms are oversized, and include aids for mobility in all stalls, i.e. grab bars, bench, shelf, and accessible sink/fixtures
- Locker system with options at accessible heights



14



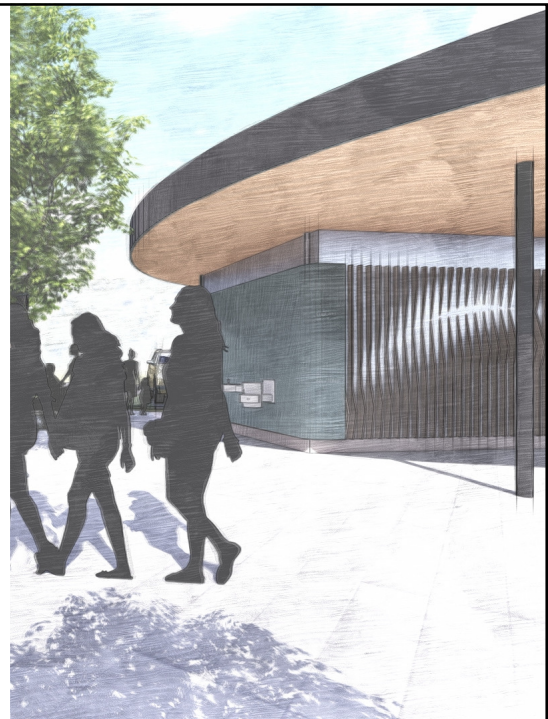
## 7. Wayfinding and Signage

- Soft illumination throughout the site to guide movement, indicate destinations (benches, washroom, water fountain), and highlight grade changes for integrated seating
- 'Accessible Wayfinding Signage Guideline' being developed for all of Westwood Park
- City Westwood Park website to be updated to provide wayfinding information for advance planning
- Signage will include directional and informational messaging
- Signage to meet Accessible and Universal Standards
  - Gender neutral signage
  - Tactile and Braille components
  - High contrast
  - International Symbols
  - QR codes



15

Thank You -  
Questions?



16