

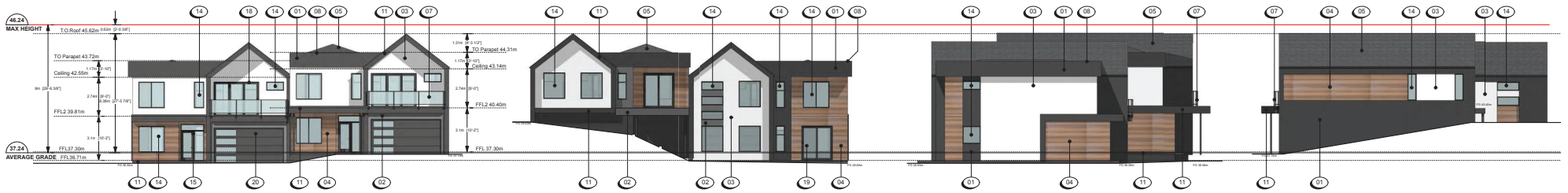
ATTACHMENT E BUILDING ELEVATIONS AND DETAILS

MATERIAL PALETTE

- 1 FIBRE CEMENT PANEL, COLOUR PLUS, SMOOTH FINISH, IN IRON GREY WITH ALUMINIUM FLASHING, COLOUR MATCHED TO IRON GREY
- 2 FIBRE CEMENT PANEL, COLOUR PLUS, SMOOTH FINISH, IN NIGHT GREY WITH ALUMINIUM FLASHING, COLOUR MATCHED TO NIGHT GREY
- 3 FIBRE CEMENT PANEL, COLOUR PLUS, SMOOTH FINISH, IN LIGHT MIST WITH ALUMINIUM FLASHING, COLOUR MATCHED TO LIGHT MIST
- 4 WOOD LOOK METAL PLANK SIDING, IN ESSPRESSO WITH WOOD GRAIN FINISH

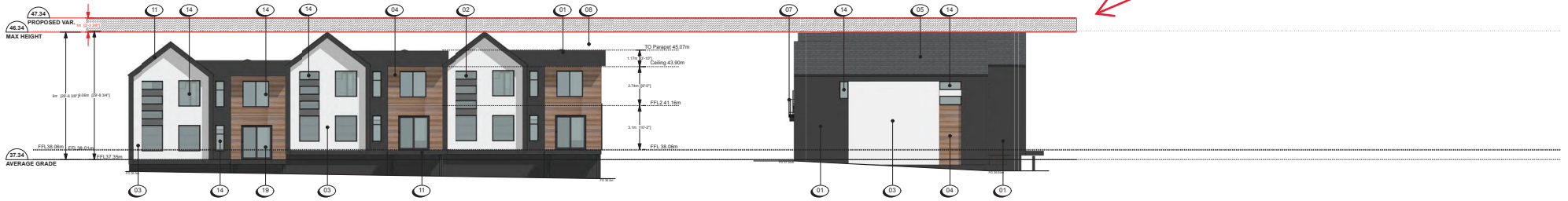
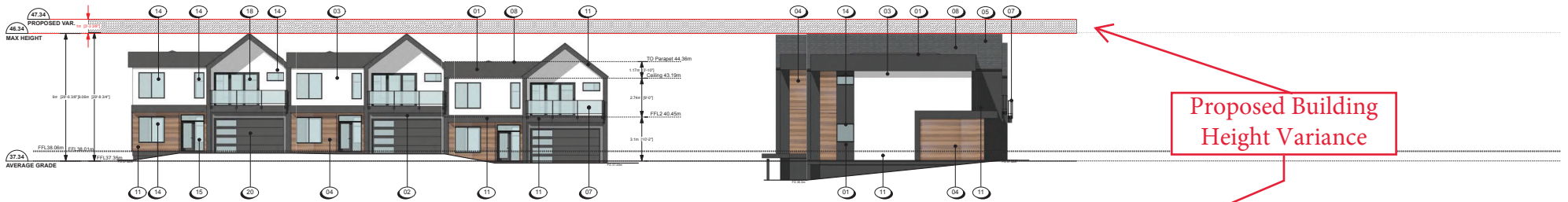
- 5 SHINGLES, IN ESTATE GREY
- 6 WOOD, STAINED IN ENGLISH CHESTNUT
- 7 CLEAR TEMPERED GLASS GUARDRAILS WITH ALUMINIUM FRAME, IN IRON GREY
- 8 ALUMINIUM CAP AND TRIM FLASHING, IN IRON GREY
- 9 ALUMINIUM CAP AND TRIM FLASHING, IN NIGHT GREY
- 10 ALUMINIUM CAP AND TRIM FLASHING, IN LIGHT MIST
- 11 FASCIA BOARD, IN IRON GREY
- 12 FASCIA BOARD, IN NIGHT GREY

- 13 FASCIA BOARD, IN LIGHT MIST
- 14 VINYL FRAME WINDOW, IN IRON GREY
- 15 VINYL SWING DOOR IN IRON GREY WITH TEMPERED GLASS: PANEL, SIDE LIGHT AND TRANSOM
- 16 VINYL SWING DOOR IN IRON GREY WITH TEMPERED GLASS: PANEL AND TRANSOM
- 17 VINYL SWING DOOR IN IRON GREY WITH TEMPERED GLASS PANEL
- 18 3 PANEL VINYL SLIDING TEMPERED GLASS DOOR, IN IRON GREY
- 19 2 PANEL VINYL SLIDING TEMPERED GLASS DOOR, IN IRON GREY
- 20 OVERHEAD GARAGE DOOR WITH TEMPERED GLASS PANELS, IN IRON GREY



Typical Building Elevation (2 attached units)

BUILDING 1



BUILDING 2

Typical Building Elevation (3 attached units)

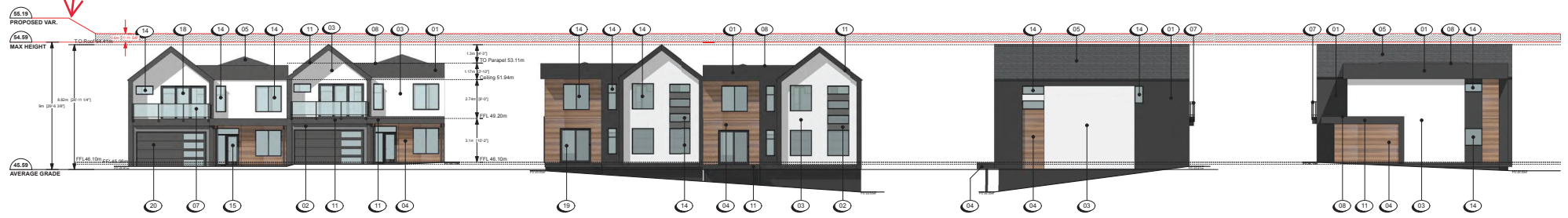
Scale: 3/32" = 1'0"

MATERIAL PALETTE

- 1 FIBRE CEMENT PANEL, COLOUR PLUS, SMOOTH FINISH, IN IRON GREY WITH ALUMINIUM FLASHING, COLOUR MATCHED TO IRON GREY
- 2 FIBRE CEMENT PANEL, COLOUR PLUS, SMOOTH FINISH, IN NIGHT GREY WITH ALUMINIUM FLASHING, COLOUR MATCHED TO NIGHT GREY
- 3 FIBRE CEMENT PANEL, COLOUR PLUS, SMOOTH FINISH, IN LIGHT MIST WITH ALUMINIUM FLASHING, COLOUR MATCHED TO LIGHT MIST
- 4 WOOD LOOK METAL PLANK SIDING, IN ESSPRESSO WITH WOOD GRAIN FINISH
- 5 SHINGLES, IN ESTATE GREY
- 6 WOOD, STAINED IN ENGLISH CHESTNUT
- 7 CLEAR TEMPERED GLASS GUARDRAILS WITH ALUMINIUM FRAME, IN IRON GREY
- 8 ALUMINIUM CAP AND TRIM FLASHING, IN IRON GREY
- 9 ALUMINIUM CAP AND TRIM FLASHING, IN NIGHT GREY
- 10 ALUMINIUM CAP AND TRIM FLASHING, IN LIGHT MIST
- 11 FASCIA BOARD, IN IRON GREY
- 12 FASCIA BOARD, IN NIGHT GREY
- 13 FASCIA BOARD, IN LIGHT MIST
- 14 VINYL FRAME WINDOW, IN IRON GREY
- 15 VINYL SWING DOOR IN IRON GREY WITH TEMPERED GLASS: PANEL, SIDE LIGHT AND TRANSOM
- 16 VINYL SWING DOOR IN IRON GREY WITH TEMPERED GLASS: PANEL AND TRANSOM
- 17 VINYL SWING DOOR IN IRON GREY WITH TEMPERED GLASS: PANEL
- 18 3 PANEL, VINYL, SLIDING TEMPERED GLASS DOOR, IN IRON GREY
- 19 2 PANEL, VINYL, SLIDING TEMPERED GLASS DOOR, IN IRON GREY
- 20 OVERHEAD GARAGE DOOR WITH TEMPERED GLASS PANELS, IN IRON GREY

Proposed Building Height Variance

Proposed Building Height Variance



BUILDING 12

Scale: 3/32" = 1'0"

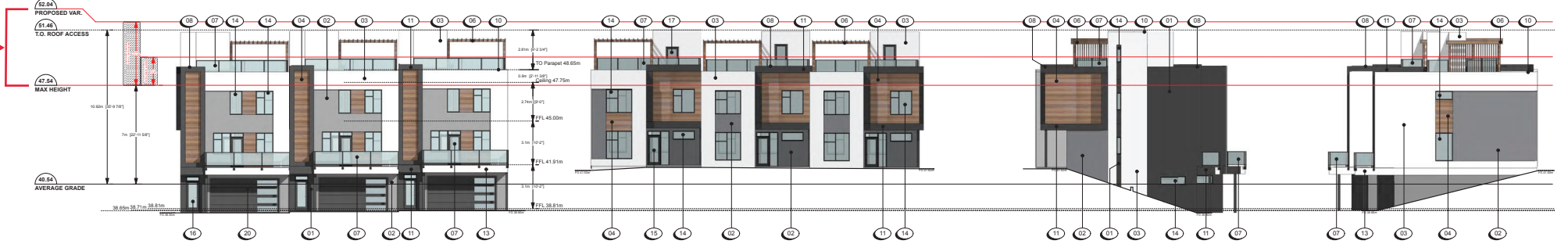
Proposed Building Height Variance

MATERIAL PALETTE

- 1 FIBRE CEMENT PANEL, COLOUR PLUS, SMOOTH FINISH, IN IRON GREY WITH ALUMINIUM FLASHING, COLOUR MATCHED TO IRON GREY
- 2 FIBRE CEMENT PANEL, COLOUR PLUS, SMOOTH FINISH, IN NIGHT GREY WITH ALUMINIUM FLASHING, COLOUR MATCHED TO NIGHT GREY
- 3 FIBRE CEMENT PANEL, COLOUR PLUS, SMOOTH FINISH, IN LIGHT MIST WITH ALUMINIUM FLASHING, COLOUR MATCHED TO LIGHT MIST
- 4 WOOD LOOK METAL PLANK SIDING, IN ESPRESSO WITH WOOD GRAIN FINISH

- 5 SHINGLES, IN ESTATE GREY
- 6 WOOD, STAINED IN ENGLISH CHESTNUT
- 7 CLEAR TEMPERED GLASS GUARDRAILS WITH ALUMINIUM FRAME, IN IRON GREY
- 8 ALUMINIUM CAP AND TRIM FLASHING, IN IRON GREY
- 9 ALUMINIUM CAP AND TRIM FLASHING, IN NIGHT GREY
- 10 ALUMINIUM CAP AND TRIM FLASHING, IN LIGHT MIST
- 11 FASCIA BOARD, IN IRON GREY
- 12 FASCIA BOARD, IN NIGHT GREY

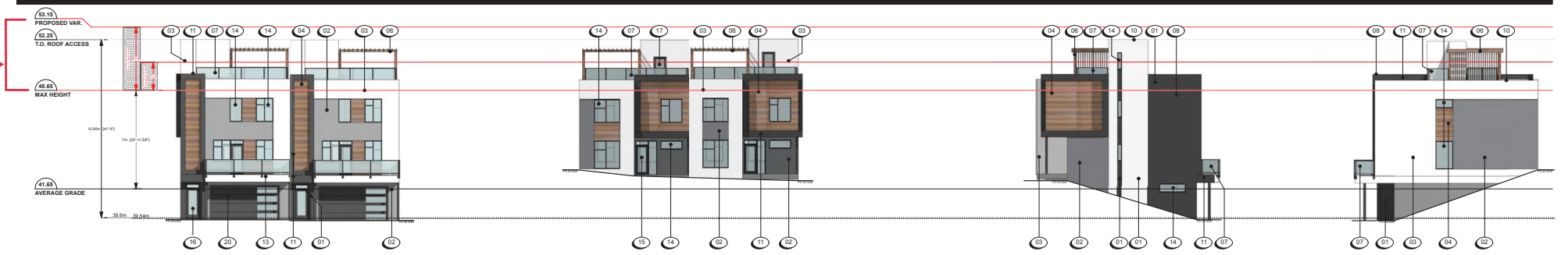
- 13 FASCIA BOARD, IN LIGHT MIST
- 14 VINYL FRAME WINDOW, IN IRON GREY
- 15 VINYL SWING DOOR IN IRON GREY WITH TEMPERED GLASS: PANEL, SIDE LIGHT AND TRANSOM
- 16 VINYL SWING DOOR IN IRON GREY WITH TEMPERED GLASS: PANEL AND TRANSOM
- 17 VINYL SWING DOOR IN IRON GREY WITH TEMPERED GLASS PANEL
- 18 3 PANEL, VINYL, SLIDING TEMPERED GLASS DOOR, IN IRON GREY
- 19 2 PANEL, VINYL, SLIDING TEMPERED GLASS DOOR, IN IRON GREY
- 20 OVERHEAD GARAGE DOOR WITH TEMPERED GLASS PANELS, IN IRON GREY



BUILDING 13



BUILDING 14



BUILDING 15

Scale: 3/32" = 1'0"

4670 Hammond Bay Rd

Nanaimo, BC
30 Jan 2024

Elevations. Buildings 13-15 **A306**

dHKarchitects dHKA



RECEIVED
DP1317
2024-JAN-31