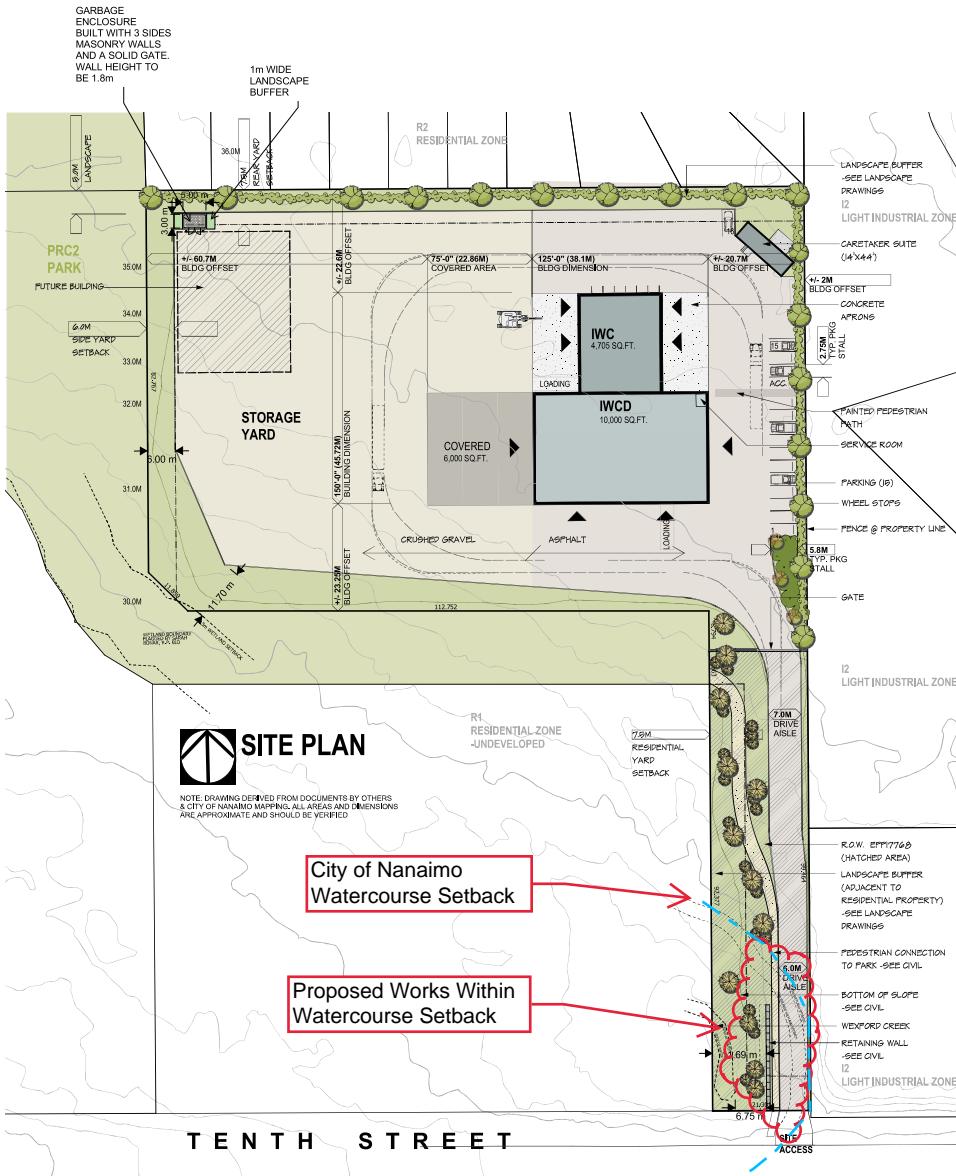


ATTACHMENT C SITE AND LIGHTING PLANS



PROPOSED NEW FACILITY FOR:
IWCD & IWC EXCAVATION
200 - TENTH STREET
NANAIMO B.C.

DRAWN BY:
B.B. / C.M.

NUMBER:
d1515.26.18

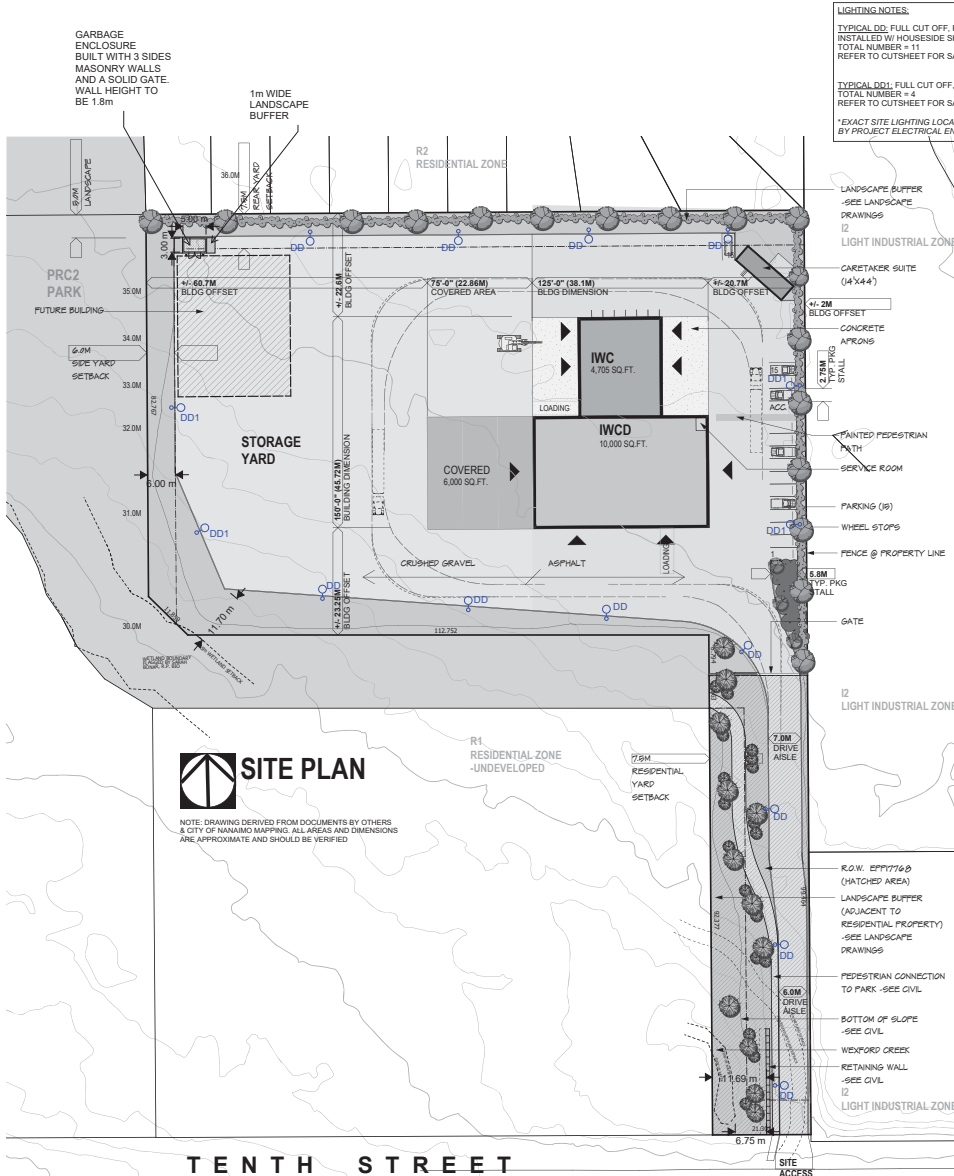
ISSUED:

ISSUED: 30 AUG 2018
REVISED: 15 OCT 2018
REVISED: 17 APR 2019
REVISED: 11 JUNE 2019
ISSUED: 24 JUNE 2019
PRE DPA MEETING: 13 AUG 2019
DPA: 10 OCT 2019
REVISED: 16 DEC 2019
REVISED: 3 OCT 2023

CONTRACTOR TO VERIFY ALL LINES, LEVELS, SURVEYS, DIMENSIONS, LOCATION OF BUILDING, ON SITE AND LOCATION OF ALL SERVICES PRIOR TO CONSTRUCTION. ALL WORKS TO BE DONE IN ACCORDANCE WITH THE B.C. BUILDING CODE, CURRENT EDITION AND ALL LOCAL REGULATIONS BY-LAWS. COPYRIGHT RESERVED. THESE PLANS ARE TO BE USED SOLELY FOR THE PROJECT SHOWN. UNAUTHORIZED REPRODUCTION OR USE IN ANY MANNER IS NOT PERMISSIBLE.

RECEIVED
DP 1189
2023-OCT-23
Current Planning

PR1

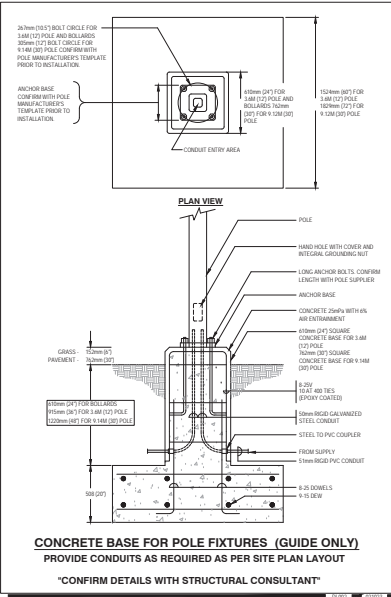


LIGHTING NOTES:

TYPICAL DD: FULL CUT OFF, FLAT HEAD, DARK-SKY COMPLIANT OVERHEAD PARKING LOT LIGHT, INSTALLED W/ HOUSESIDE SHIED/ EGSR SHED
TOTAL NUMBER = 11
REFER TO CUTSHEET FOR SAMPLE

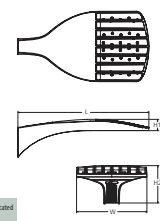
TYPICAL DD1: FULL CUT OFF, FLAT HEAD, DARK-SKY COMPLIANT OVERHEAD PARKING LOT LIGHT, INSTALLED W/ HOUSESIDE SHIED/ EGSR SHED
TOTAL NUMBER = 4
REFER TO CUTSHEET FOR SAMPLE

*EXACT SITE LIGHTING LOCATIONS, MODELS AND PHOTOMETRIC ANALYSIS SHALL BE BY PROJECT ELECTRICAL ENGINEER AT BP



D-Series Size 0 LED Area Luminaire

- Specifications**
- EPA: 0.44 ft² (0.04 m²)
 - Length: 26.18" (66.5 cm)
 - Width: 14.06" (35.7 cm)
 - Height H1: 2.26" (5.7 cm)
 - Height H2: 7.46" (19.0 cm)
 - Weight: 23 lbs (10.4 kg)



Introduction

The modern styling of the D-Series features a highly refined aesthetic that blends seamlessly with its environment. The D-Series offers the benefits of the latest in LED technology into a high performance, high efficacy, long-life luminaire.

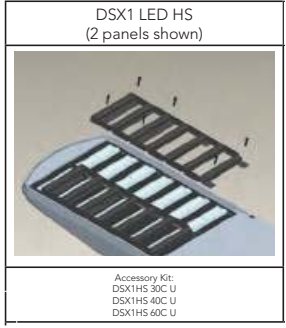
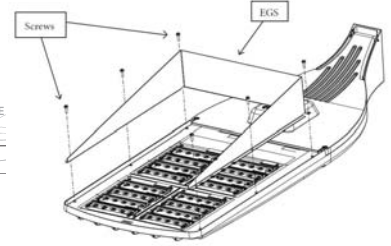
The photometric performance results in sites with excellent uniformity, greater pole spacing and lower power density. D-Series outstanding photometry aids in reducing the number of poles required in area lighting applications, with typical energy savings of 70% and expected service life of over 100,000 hours.



design select

Items marked by a shaded background qualify for the Design Select program and ship in 15 days or less. To learn more about Design Select, visit www.aualitybrands.com/designselect

*See ordering tree for details



PARKING LOT LIGHT, HOUSESIDE SHIED, & EGSR SHIELD CUTSHEET

IWCD

APLIN MARTIN
ENGINEERING ARCHITECTURE PLANNING SURVEYING

PROPOSED NEW FACILITY FOR:
IWCD & IWC EXCAVATION
200 - TENTH STREET
NANAIMO B.C.

DRAWN BY: B.B. / C.M.

NUMBER: 1515.26.18

ISSUED: 30.AUG.2018

REVISED: 15.OCT.2018

REVISED: 17.APR.2019

REVISED: 11.JUN.2019

ISSUED: 24.JUN.2019

PRE DPA MEETING: 13.AUG.2019

DPA: 10.OCT.2019

REVISED: 16.DEC.2019

REVISED: 3.OCT.2023

CONTRACTOR TO VERIFY ALL LINES, LEVELS, SURVEYS, DIMENSIONS, LOCATION OF BUILDING, ON SITE AND LOCATION OF ALL SERVICES PRIOR TO CONSTRUCTION. ALL WORK TO BE DONE IN ACCORDANCE WITH THE B.C. BUILDING CODE, CURRENT EDITION AND ALL LOCAL BUILDING BYLAWS. COPYRIGHT RESERVED. THESE PLANS ARE TO BE USED SOLELY FOR THE PROJECT SHOWN. UNAUTHORIZED REPRODUCTION OR USE IN ANY MANNER IS NOT PERMISSIBLE.

PR1

RECEIVED
DP1189
2024-JAN-24