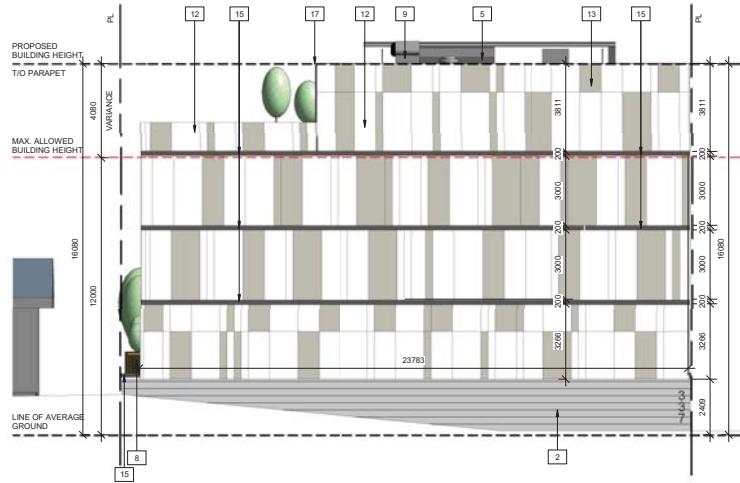


ATTACHMENT D BUILDING ELEVATIONS AND DETAILS



1 SOUTH ELEVATION
DPS-1 1:100



3 NORTH ELEVATION
DPS-1 1:100



2 EAST ELEVATION
DPS-1 1:100



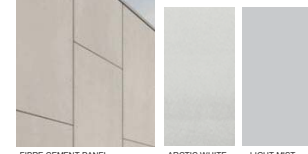
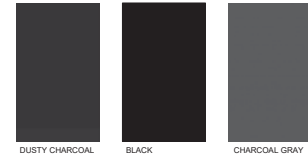
4 WEST ELEVATION
DPS-1 1:100

EXTERIOR FINISH MATERIALS

1. FIBRE CEMENT PANEL - TYPE 1
2. POURED IN PLACE CONCRETE WITH REVEAL JOINTS PAINTED
3. PREFINISHED METAL CORNICE
4. PREFINISHED METAL FLASHING
5. PREFINISHED METAL ROOF TOP UNIT SCREENING
6. PREFINISHED METAL LOUVERED PRIVACY SCREEN
7. ALUMINUM WINDOW FRAME/WINDOW
8. PREFINISHED METAL PICKET RAILING
9. MECHANICAL UNITS
10. PREFINISHED METAL OVERHEAD DOOR WITH LEXAN SLATS
11. METAL HOLLOW DOOR - PAINT
12. FIBRE CEMENT PANEL - TYPE 2
13. FIBRE CEMENT PANEL - TYPE 3
14. DOWNSPOUTS
15. PREFINISHED HORIZONTAL METAL PANEL/TRIM - TYPE 1
16. PREFINISHED COMPOSITE BOARD - 6" V-GROOVE PLANK
17. CORRUGATED METAL PANEL - TYPE 1
18. OCULAR PERFORATED METAL PANEL IMAGING SCREEN WITH HINGES
19. PRIVACY FILM
20. CEDAR PLANTS, GRASSLOW SHRUB FOR SCREENING
21. ENTRANCE SCIENCE LIGHTING
22. RECESSED LIGHTING BELOW LEVEL 2 TERRACE
23. TRANSFORMER WITH HISTORIC IMAGE WRAP
24. EDUCATIONAL DISPLAY, SUSTAINABLE ENERGY MANAGEMENT

COLOUR

- LIGHT MIST
- GRAY
- CHARCOAL GRAY
- LIGHT GRAY
- CHARCOAL GRAY
- DARK GRAY
- CHARCOAL GRAY
- CHARCOAL GRAY
- ARCTIC WHITE
- SLATE GRAY
- BLACK
- CHARCOAL GRAY
- DARK FIR
- DUSTY CHARCOAL
- CHARCOAL GRAY



ISSUED	DATE	REMARKS
1	AUGUST 11, 2022	ISSUED FOR DP

NOTE:
ELEVATIONS HAVE CHANGED

ROBSON STREET
APARTMENT
NANAIMO, BC
337 ROBSON STREET

Drawn: CAF, TO Checked: NV
Project Number: 22-23

BECK VALE ARCHITECTS + PLANNERS INC.
This drawing is a copyright instrument of architectural services rendered in the province of the Canadian. All information shown on this drawing is copyright material and is for use on the named project only. Information contained herein may be used or reproduced in any form without the written consent of Beck Vale Architects + Planners Inc. The Contractor shall verify and be responsible for all dimensions, dates and elevations.

approved to executing the work. Dimensions and variations shall be reported to the Client prior to commencing construction. In all cases, the latest issue of the drawings shall prevail in the event of any conflict. The Contractor shall "Sign-off" with reference to the latest issue, and used for reference purposes only.

All work that conforms to the latest edition of local Building Codes, provincial codes and local ordinances shall be reported to the Client prior to commencing construction. In all cases, the latest issue of the drawings shall prevail in the event of any conflict. The Contractor shall "Sign-off" with reference to the latest issue, and used for reference purposes only.



OPTIONAL IMAGES FOR METAL PANEL SCREENING AND TRANSFORMER IMAGE WRAP

ELEVATIONS AND MATERIAL BOARD

DP3-1

RECEIVED
DP1289
2023-DEC-17
Current Planning