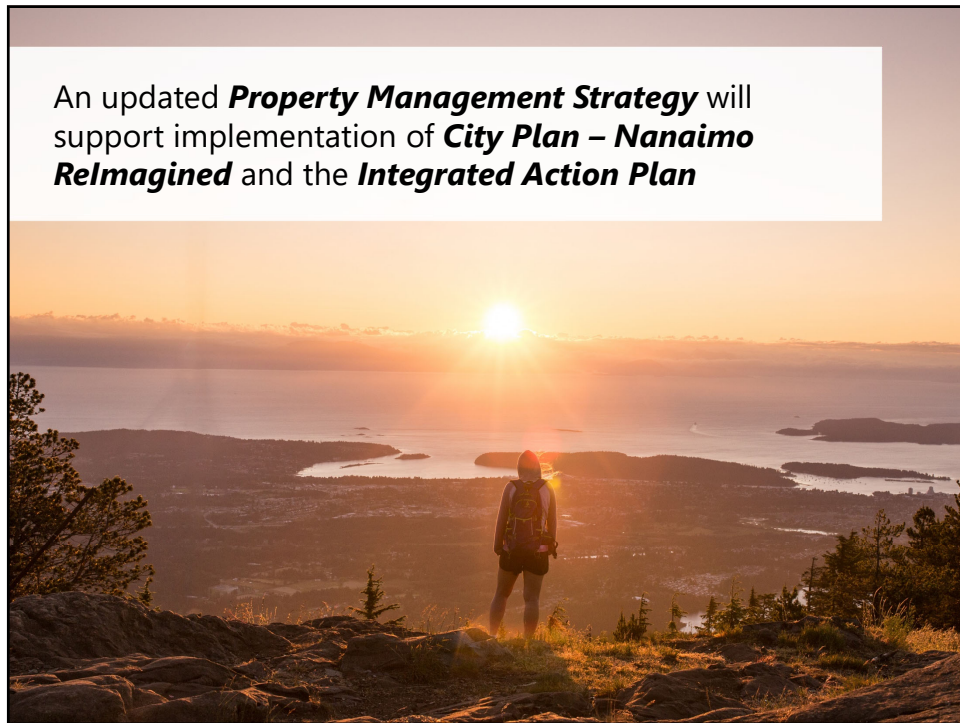




1



An updated **Property Management Strategy** will support implementation of **City Plan – Nanaimo Reimagined** and the **Integrated Action Plan**

2



**What does the Strategy include?**

- Summary of existing land inventory
- Tools, criteria, and processes used in acquisition and disposition
- Acquisition priorities
- Disposition opportunities
- Leasing and licensing of City lands
- Implementation and monitoring

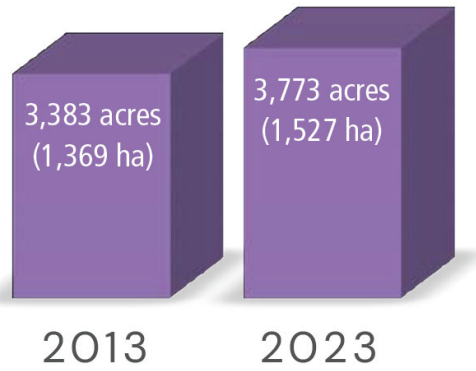
3



4

## Total City Land Inventory

1,527 ha / 3,773 acres



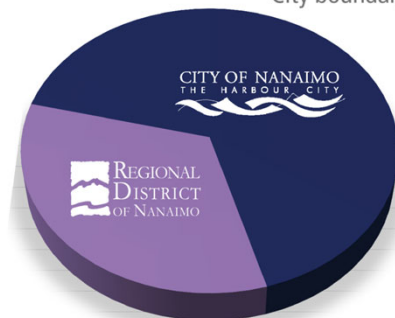
**11.5%** increase in past decade

5

## Total City Land Inventory

1,527 ha / 3,773 acres

66.7% of City-owned  
lands are within the  
City boundary



33.3% of City-owned  
land holdings are in  
the RDN

6

## Land Inventory – Within the RDN

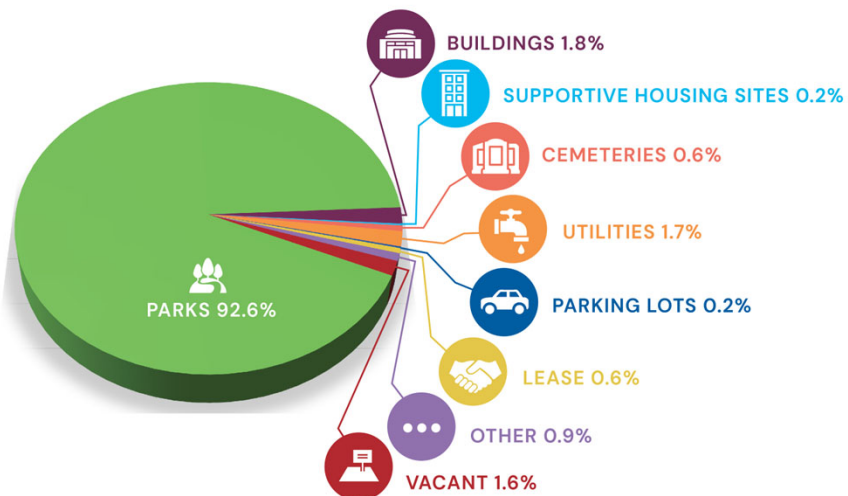
508 ha / 1,255 acres

- Jump Lake Dam (218 ha / 539 acres)
- District Lot 9 (80 ha / 200 acres)
- 350 Nanaimo River Road (45 ha / 113 acres)
- Plecas Road (40 ha / 100 acres)
- South Fork Dam (37ha / 92 acres)
- 2500 South Fork Road (25 ha / 61 acres)
- Witchcraft Lake (21 ha / 54 acres)

7

## Land Inventory – Within the City

1,019 ha / 2,518 acres



8

## Types of City-owned Lands

- City of Nanaimo Boundary
- Parks
- Buildings
- Cemeteries
- Utilities
- Lease
- Supportive Housing Sites
- Parking Lots
- Other
- Vacant Land



9

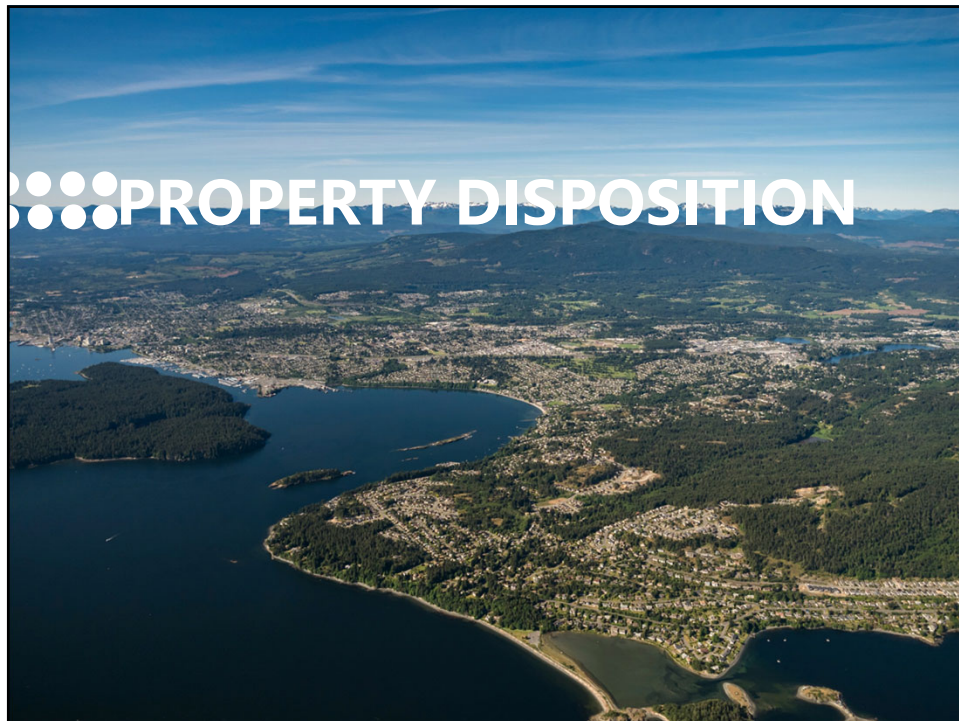


10

## Nanaimo Property Acquisition Criteria



11



12

## Nanaimo Property Disposition Criteria



13

### Rights of Way

When a City of Nanaimo utility is located on private property one of the following is implemented.

- Statutory right of way
- Blanket right of way

For unprotected services:

- Acquisition of right of way
- Access negotiations with property owner

14



## Leases & Licencing

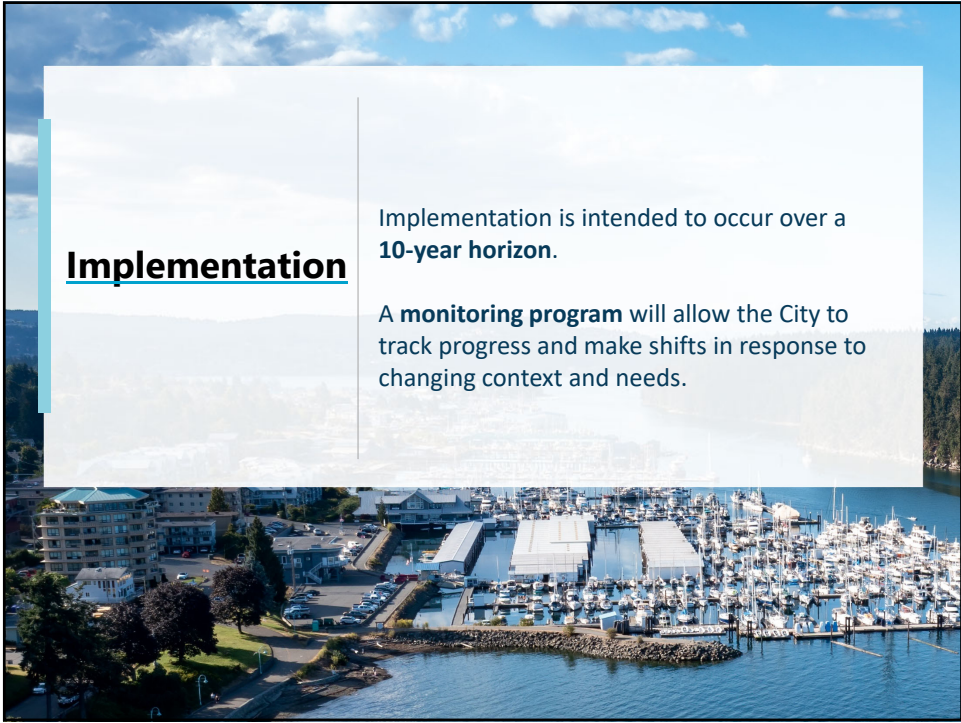
### City Lease Agreements:

- 6 from Public Works
- 24 from Parks, Recreation, and Culture
- 19 from the Community Safety & Development Division

### City Licence Agreements: 130

- 61 from Parks, Recreation, and Culture
- 47 from the Community Safety & Development Division
- 17 from Public Works
- 5 from the Water Resources Section

15



## Implementation

Implementation is intended to occur over a **10-year horizon**.

A **monitoring program** will allow the City to track progress and make shifts in response to changing context and needs.

16



**Thank You!**



17