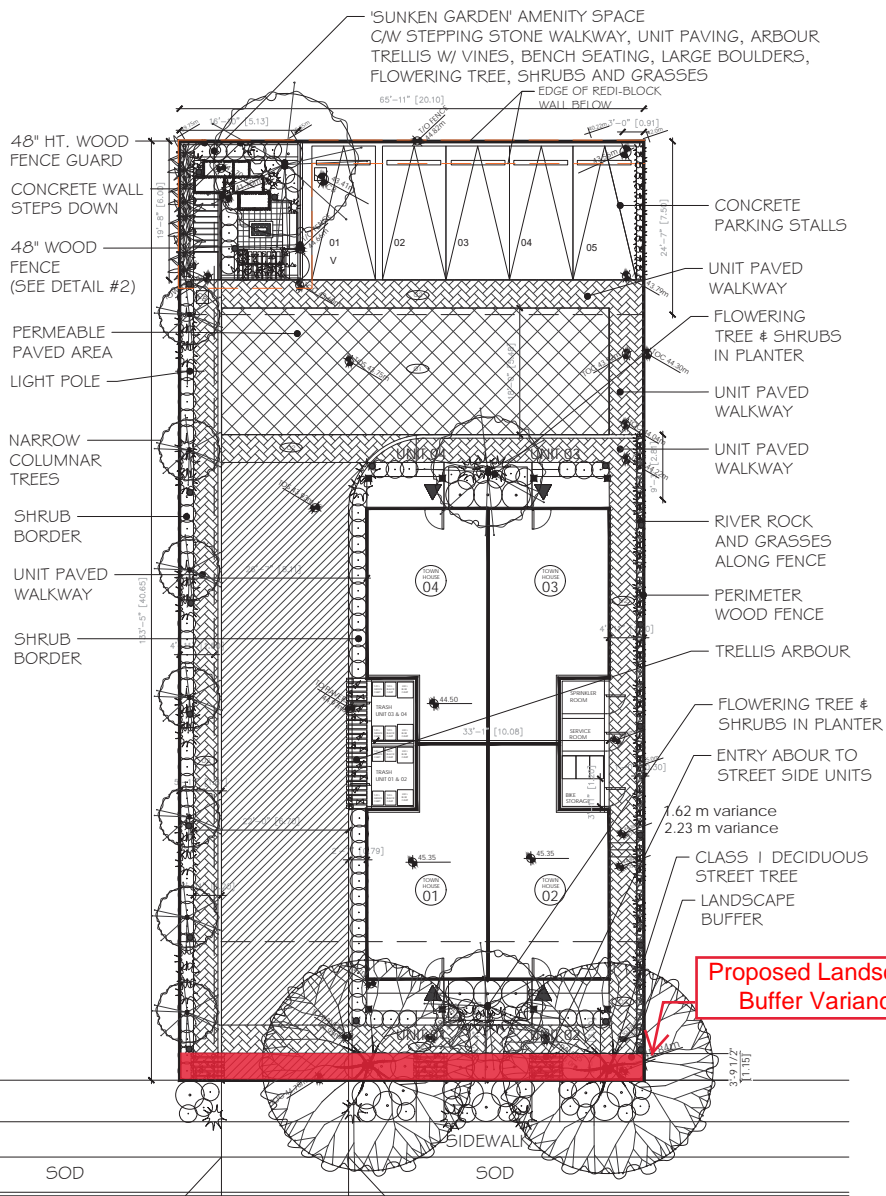
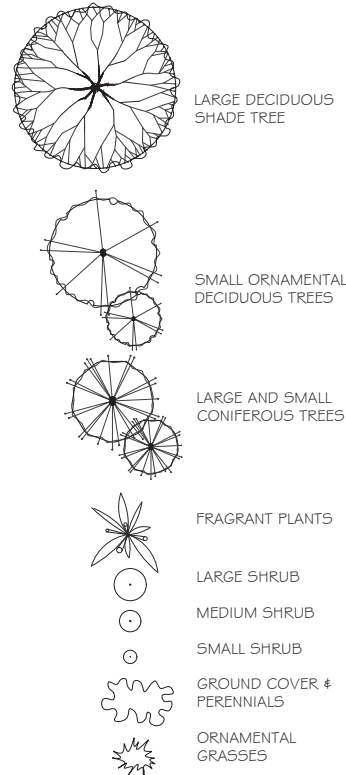


ATTACHMENT F LANDSCAPE PLAN AND DETAILS



Proposed Landscape Buffer Variance

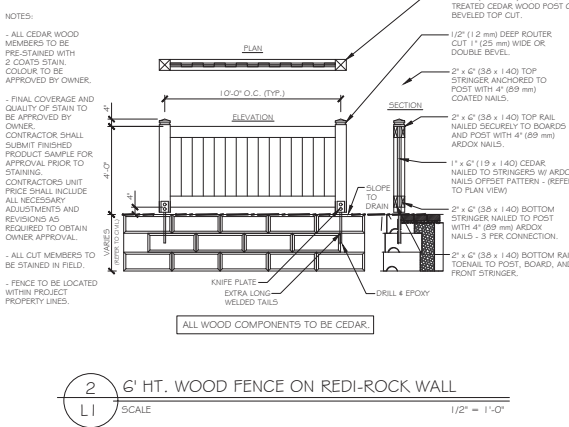
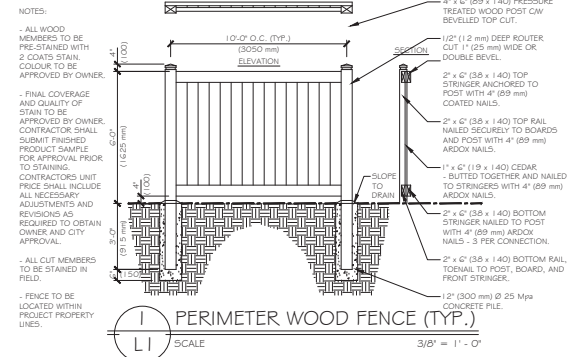
SOFTSCAPE LEGEND



GRADING PLAN



NOTE: REFER TO PAGE L200 FOR FULL PLANTING PLAN



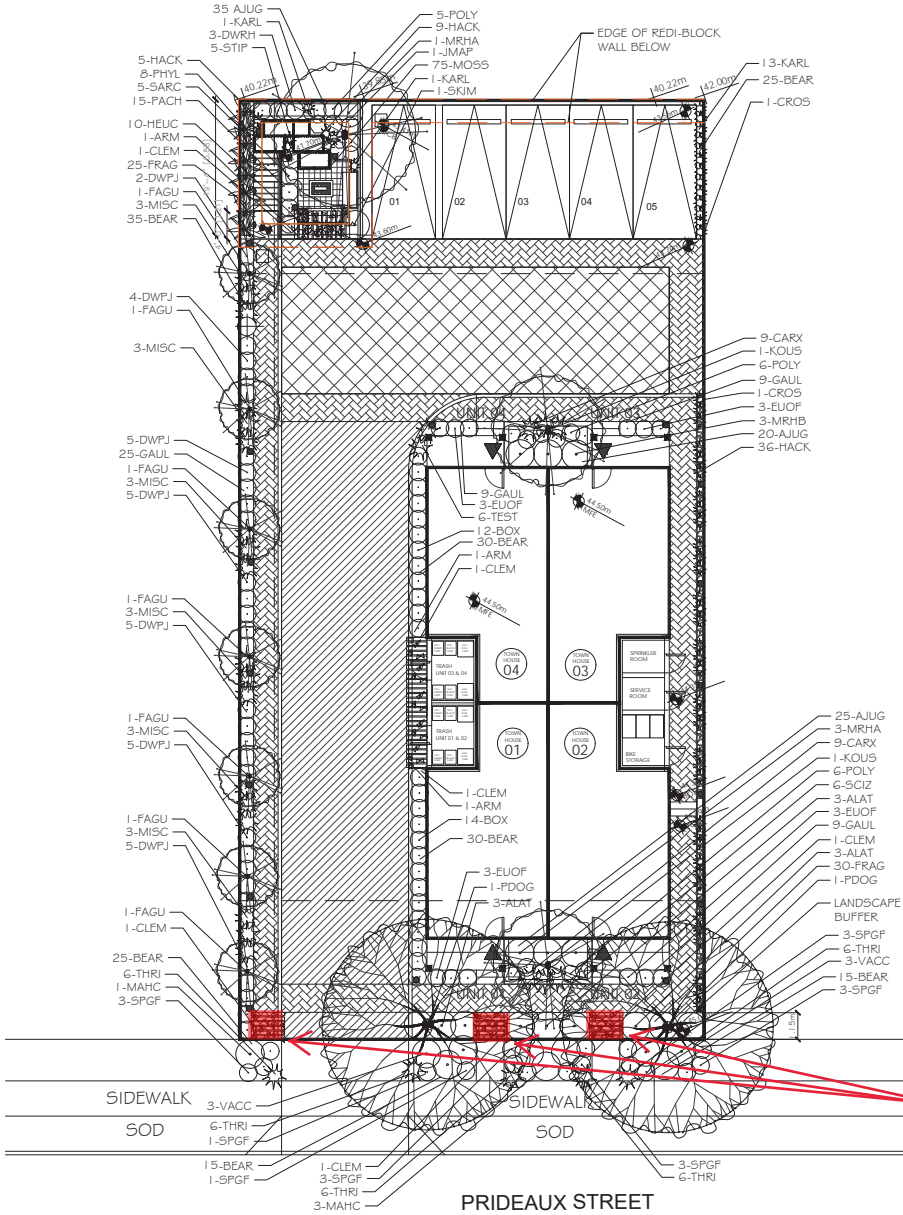
PAVER TYPES

- 01** TYPE: VENETIAN COBBLE PERMEABLE PAVER. COLOUR: SANDALWOOD PATTERN: 45° STRETCHER BOND. SIZE: 9" x 9"
- 02** TYPE: VENETIAN COBBLE PERMEABLE PAVER. COLOUR: LA JOLLA PATTERN: HERRINGBONE. SIZE: 6" x 12"

LIGHTING LEGEND

- BOLLARD LIGHT
- 14' HT. LIGHT POLE
- STEP LIGHT

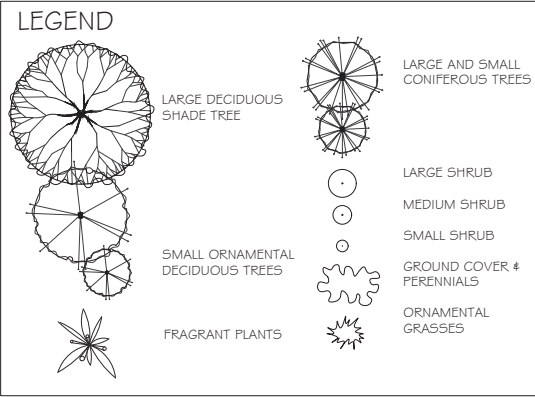
REV. DATE	NUMBER	DESCRIPTION
19-02-23	1	PRELIM. LANDSCAPE CONCEPT PLAN
23-02-23	2	REV. LANDSCAPE CONCEPT PLAN
16-08-23	3	REV. DP PACKAGE
16-09-23	4	REV. DP PACKAGE



PLANT LIST

	Key	Quantity	Common Name	Latin Name	Size	
Trees	JMAP	1	Japanese Maple	<i>Acer japonica</i> var. 'Bloodgood'	5cm Cal.	
	KOUS	2	Kousa Dogwood	<i>Cornus kousa</i> var. 'Satomi'	6cm Cal.	
	PDOG	2	Pacific Flowering Dogwood	<i>Cornus nuttallii</i> var. 'Eddies White Wonder'	7cm Cal.	
	FAGU	7	Golden Columnar Beech	<i>Fagus sylvatica</i> var. 'Dawycks Gold'	7cm Cal.	
Medium Shrubs	ALAT	9	Winged Burning Bush	<i>Euonymus alata</i> var. 'Compacta'	#2 Pot	
	MRHB	3	Rhododendron	<i>Rhododendron</i> var. 'Christmas Cheer'	#5 Pot	
	MRHA	4	Rhododendron	<i>Rhododendron</i> var. 'Unique'	#5 Pot	
	VACC	6	Salal Blueberry	<i>Vaccinium</i> var. 'Lagasy'	#2 Pot	
Small Shrubs	SKIM	1	Japanese Stimmia	<i>Stimmia japonica</i> var. 'Ruby'	#2 Pot	
	MAHC	4	Oregon Grape	<i>Mahonia aquifolium</i> var. 'Compacta'	#2 Pot	
	EUOF	12	Creeeping Euonymus	<i>Euonymus fortunei</i> var. 'Emerald Gaiety'	#1 Pot	
	DWPF	31	Dwarf Ficus	<i>Ficus japonica</i> var. 'Delutante'	#1 Pot	
Vines	POLY	17	Sword Fern	<i>Polystichum munum</i>	#1 Pot	
	SPGF	17	Goldflame Spirea	<i>Spirea bumaldii</i> var. 'Goldflame'	#1 Pot	
	BOX	26	Boxwood	<i>Buxus sempervirens</i> var. 'Winter Gem'	#2 Pot	
	SARC	5	Sweet Box	<i>Sarcococca ruscifolia</i>	#1 Pot	
	DWRH	3	Dwarf Rhododendron	<i>Rhododendron</i> var. 'Bow Bell'	#2 Pot	
	CLEM	6	Clematis	<i>Clematis</i> var. 'Elizabeth'	#5 Pot	
	ARM	3	Arnica's Clematis	<i>Clematis armandi</i>	#5 Pot	
	CROS	2	Climbing Rose	<i>Rosa</i> var. 'New Dawn'	#5 Pot	
	Ground Covers	BEAR	175	Bearberry	<i>Arctostaphylos uva-ursi</i> var. 'Vancouver Jade'	#5P4 Pot
		GAUL	52	Wintergreen	<i>Gaultheria procumbens</i>	#5P4 Pot
MOSB		75	Scotch / Irish Moss	<i>Sagina subulata</i>	#5P4 Pot	
AJUG		80	Bugleweed	<i>Ajuga reptans</i> var. 'Bronze Baby'	#5P4 Pot	
FRAG		55	Coastal Strawberry	<i>Fragaria chiloensis</i>	#5P4 Pot	
Perennials	PACH	15	Fuchsia var. 'Alice Hoffman'	<i>Fuchsia</i> <i>andrea</i>	#5P4 Pot	
	HEUC	10	Coral Bells	<i>Heuchera micrantha</i> var. 'Palace Purple'	#5P5 Pot	
Grasses	SCIZ	6	Kalita Lily	<i>Schizostylis coccinea</i> var. 'Oregon Sunset'	#5P4 Pot	
	THRI	24	Sea Thrift	<i>Artemisa maritima</i>	#5P5 Pot	
Grasses	CARX	18	Vanegated Japanese Sedge	<i>Carex morrowei</i> var. 'Aureo vanegata'	#5P5 Pot	
	TEST	6	Flame Sedge	<i>Carex testacea</i>	#1 Pot	
	KARL	15	Karl Forrester Feather Reed G	<i>Calamagrostis x acutiflora</i>	#2 Pot	
	HACK	50	Hawai Grass	<i>Hacconecloa</i>	#5P5 Pot	
	MESC	18	Miscanthus Grass	<i>Miscanthus sinensis</i> var. 'Silbertedder'	#5 Pot	
	STIP	9	Spear Grass	<i>Stipa calamagrostis</i>	#1 Pot	
	PTYL	9	Golden Bannop	<i>Phytolacca aspera</i>	#7 Pot	

Notes: - All landscape work to conform with B.C.S.L.A. / B.C.N.T.A. standard specification.
 - All areas to be irrigated with an automatic underground system.



Proposed 3 trellis Variances



THE DRAWINGS, DESIGN IDEAS AND MATERIALS LISTED OR REFERENCED HEREIN ARE THE SOLE PROPERTY OF 4★ SITE LANDSCAPE ARCHITECTURE AND SITE PLANNING. ANY REPRODUCTION, COPIES OR PARTIAL COPIES ARE STRICTLY PROHIBITED. ANY AND ALL USE OF ANY PART OF THESE DRAWINGS OR ANY INFORMATION CONTAINED HEREIN WITHOUT EXPRESS WRITTEN CONSENT BY THE FIRM OR ANY SUBSEQUENT USER IS PROHIBITED. THIRD PARTY SHALL NOT BE HELD LIABLE FOR ANY ARCHITECTURAL RESPONSIBILITY.

ARCH. STAMP

PRIDEAUX TOWNHOUSES
 532 PRIDEAUX STREET NANAIMO, BC

CLIENT
 SUN PORCH HOMES

REV. DATE	NUMBER	DESCRIPTION
10-02-23	1	PRELIM. LANDSCAPE CONCEPT PLAN
23-02-23	2	REV. LANDSCAPE CONCEPT PLAN
16-08-23	3	REV. FOR DP
19-09-23	4	REV. FOR DP

DATE: OCTOBER 20, 2023
 SCALE: 1:100

RECEIVED
 01730
 2023-OCT-21
 COURT PLANNING

DRAWN BY: BF/RF

PLANTING PLAN

L200