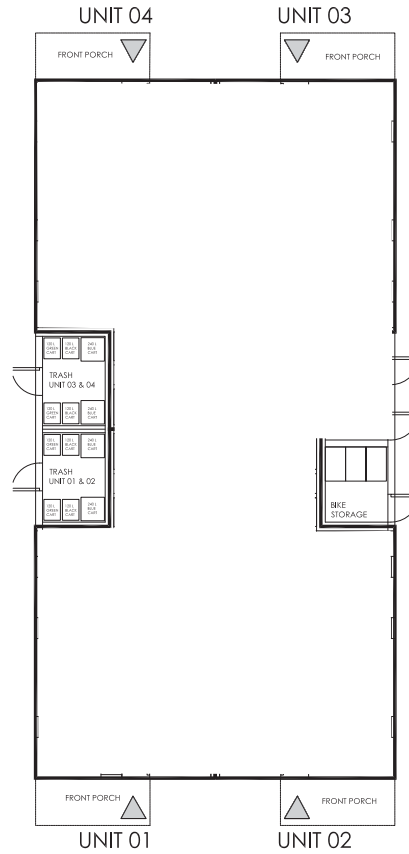
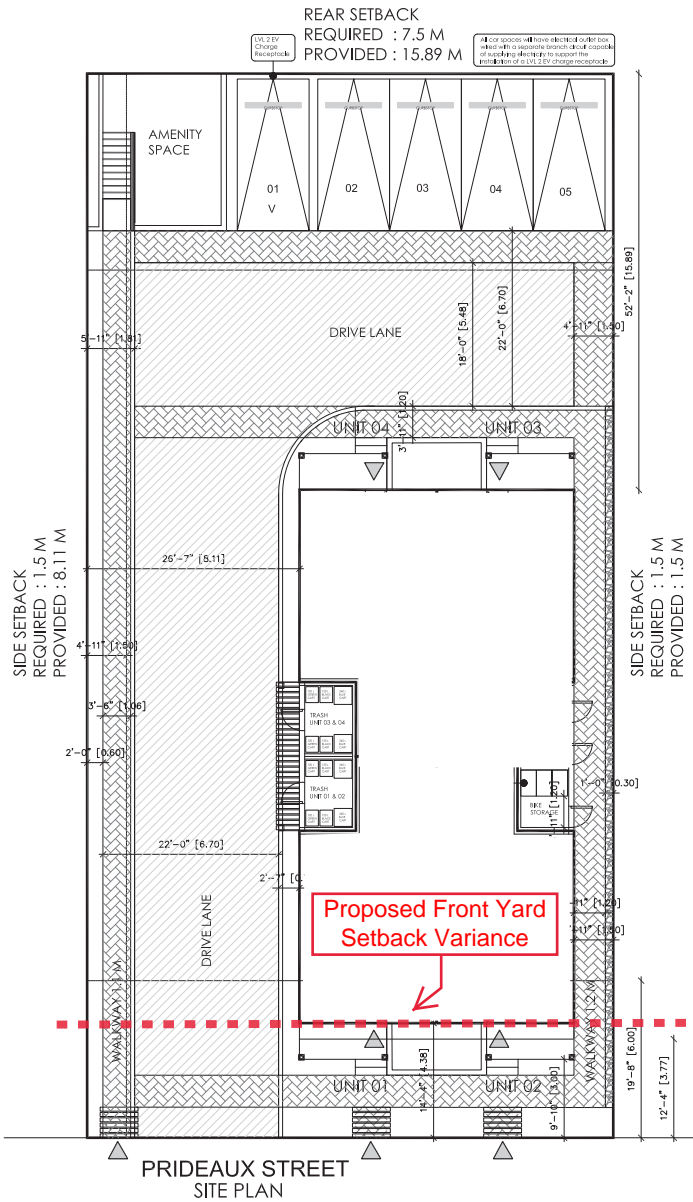
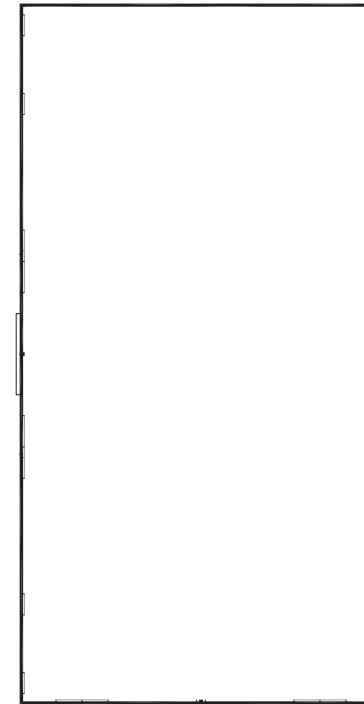
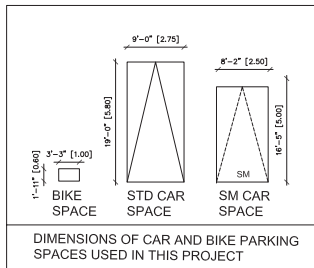


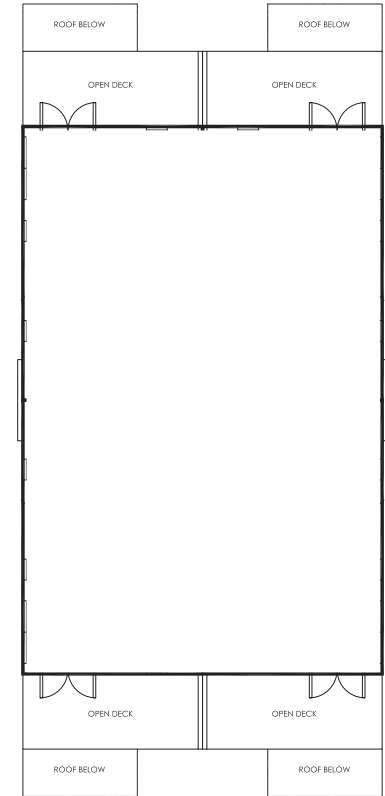
ATTACHMENT C SITE AND PARKING PLAN



LEVEL 1 FLOOR PLAN



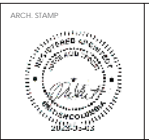
LEVEL 2 FLOOR PLAN



LEVEL 3 FLOOR PLAN

JOYCE REID TROOST ARCHITECTURE
2515 GLENAYR DRIVE
NANAIMO, BC V9S 3R9
joyce@jrtarchitecture.com
250.714.8749
jrtarchitecture.com

THE DRAWINGS, DESIGN IDEAS AND
FEATURES OF CONSTRUCTION INDICATED
HEREIN ARE THE EXCLUSIVE PROPERTY OF
JOYCE REID TROOST ARCHITECTURE. ALL
COMMON COPY AND PROPERTY RIGHTS
ARE EXPRESSLY RESERVED. THEY ARE NOT
TO BE REPRODUCED, COPIED, REPRODUCED, OR
USED FOR ANY PURPOSES WITHOUT THE
WRITTEN CONSENT OF JOYCE REID TROOST
ARCHITECTURE. IN THE EVENT OF ANY
UNAUTHORIZED USE OF THESE PLANS BY A
THIRD PARTY, THE THIRD PARTY SHALL
NOT HOLD JOYCE REID TROOST ARCHITECTURE
RESPONSIBLE.



532 PRIDEAUX STREET TOWNHOMES
532 PRIDEAUX STREET, NANAIMO, BC

CLIENT
Sun Porch Homes Ltd.

REV. DATE	NUMBER	DESCRIPTION

DATE: SEPTEMBER 23, 2022
SCALE: SEE DRAWING
RECEIVED
DP#1301
2023-NOV-28
CITY OF NANAIMO
DRAWN BY: JRT

STYLE PLANS & FLOOR PLANS
A100