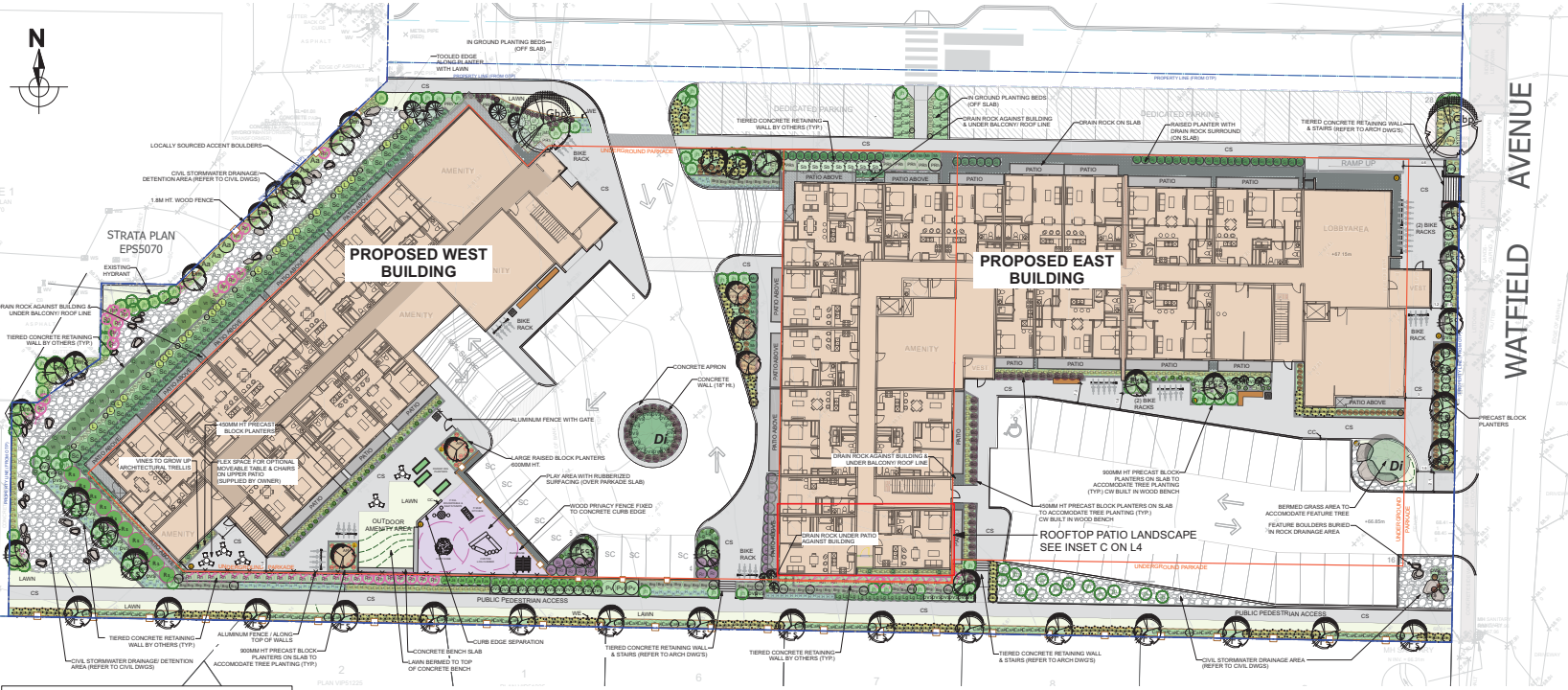


ATTACHMENT H LANDSCAPE PLAN AND DETAILS



CHILDRENS PLAY EQUIPMENT
(OR APPROVED EQUIVALENT)
POSSIBLE SUPPLIER:
HABITAT SYSTEMS INC.
1 866 422 4828

Date	Revisions	By
April 12, 2022	Preliminary Draft For Review	LS/SD
July 7, 2023	Issue for DP	LS/SS

LAZZARIN SVISDAHL
LANDSCAPE ARCHITECTS
1395 5th Ave Prince George, BC V2L 3L6
250.503.0158 www.lsa-landscap.com

SELUX INULA BOLLARD
(OR APPROVED EQUIVALENT)
LED DARK SKY COMPLIANT BOLLARD LIGHT
COLOUR: BLACK
HT: 3.5' (1 METER)

Project
Harbour Hills
525 Third Street
Nanaimo, BC

Sheet Title
Overall Landscape Plan

Date April 12, 2022

Scale 1:250 METERS

Drawn By LS/SD

Project No.

Copyright reserved. This drawing and the design are, and all times remain the exclusive property of Lazzarin Sviss Dahl Landscape Architects and cannot be used without the Landscape Architects written consent.

Drawing No.

L 1.0
RECEIVED
DP1275
2023-JUL-26

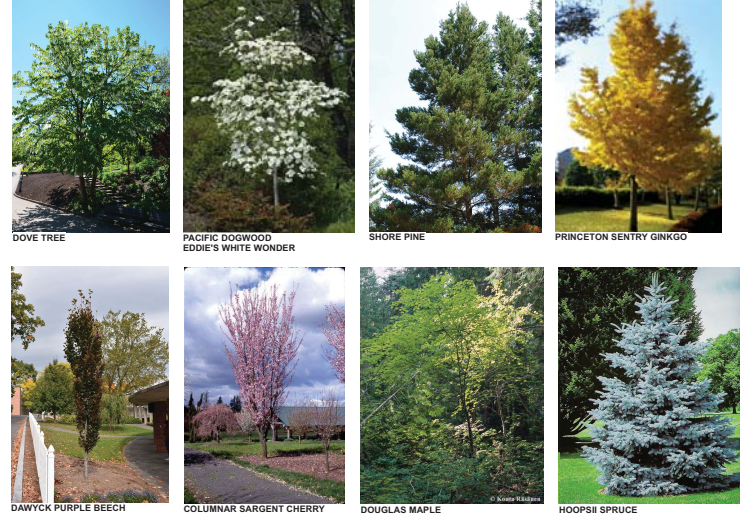
- LEGEND**
- PROPERTY LINES
 - LINE OF UNDERGROUND PARKADE
 - BRUSH FINISH CONCRETE WALKWAYS
 - DRAIN ROCK
 - LAWN
 - FORMAL PLANTING BED
 - GROUNDCOVER ON FILTER FABRIC
 - NATIVE PLANTING BED
 - COMPOST MULCH
 - CIVIL STORMWATER DRAINAGE/ DETENTION AREA
 - AMENITY PLAYGROUND SPACE
 - PT WOOD PRIVACY FENCE
 - 1 200 MM HT METAL FENCE & GATE
 - BENDER BOARD COMPOSITE EDGER
 - CONCRETE CURB EDGING
 - CONCRETE PLANTER WALLS
 - STACKED TIMBER RAISED PLANTER
 - BENCH FIXED TO CONCRETE SURFACE
 - DERO ROLLING BIKE RACK
 - GARBAGE BIN



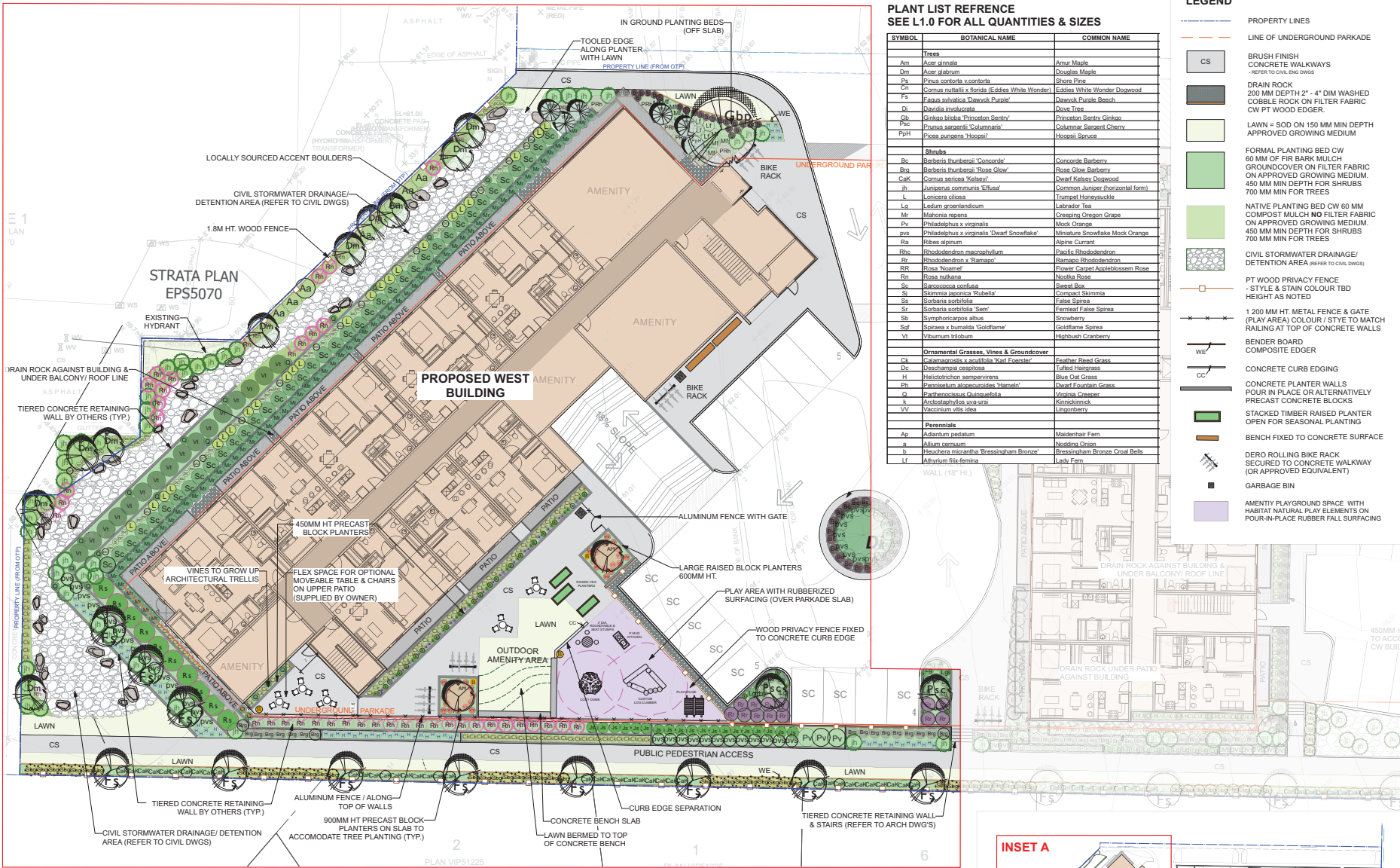
OVERALL PROJECT PLANT LIST

SYMBOL	BOTANICAL NAME	COMMON NAME	COUNT	SIZE
Trees				
Am	Acer ginnata	Amur Maple	5	6cm Cal
Dm	Acer glabrum	Douglas Maple	10	#2pot
Pn	Pinus contorta s. contorta	Shore Pine	6	#2pot
Cn	Cornus nuttallii x florida (Eddies White Wonder)	Eddies White Wonder Dogwood	4	6cm Cal
Fs	Fagus sylvatica 'Dawck Purple'	Dawck Purple Beech	22	6cm Cal
Di	Davidia involucreata	Dove Tree	2	6 cm Cal
Sb	Salix integra 'Princeton Sentry'	Princeton Sentry Ginkgo	2	6cm Cal
Pr	Prunus sibirica 'Volkmare'	Colony Starburst Cherry	7	6cm Cal
PpH	Pinus pungens 'Hoopsii'	Hoopsii Spruce	6	2m
Shrubs				
Bc	Berberis thunbergii 'Conspice'	Conspice Barbary	54	#2pot
Bg	Berberis thunbergii 'Rose Glow'	Rose Glow Barbary	44	#2pot
CaK	Cornus sericea 'Kelsey'	Dwarf Kelsey Dogwood	96	#2pot
Jr	Juncus communis 'Eiffel'	Common Juniper (horizontal form)	87	#2pot
L	Lonicera ciliosa	Trumpet Honeysuckle	24	#2pot
Lg	Ledum greenlandicum	Labrador Tea	26	#2pot
M	Mahonia repens	Creeeping Oregon Grape	87	#2pot
Or	Philadelphus virginialis	Mock Orange	3	#2pot
ov	Philadelphus x virginialis 'Dwarf Snowflake'	Miniature Snowflake Mock Orange	97	#2pot
Ra	Ribes alpinum	Alpine Currant	10	#2pot
Rhe	Rhododendron macrophyllum	Pacific Rhododendron	13	#2pot
Rr	Rhododendron x 'Dames'	Pinkam Rhododendron	23	#2pot
RrR	Rosa 'Noume'	Flower Carpet Applauseless Rose	10	#2pot
Rn	Rosa nutkana	Nootka Rose	84	#2pot
S	Sarcococca confusa	Sweet Box	40	#2pot
Sj	Skimmia japonica 'Rubella'	Compact Skimmia	63	#2pot
Ss	Sorbaria sorbifolia	False Spirea	63	#2pot
Sp	Spiraea vanhouttei 'Sany'	Parmaid False Spirea	63	#2pot
Sb	Symphoricarpos albus	Snowberry	7	#2pot
Ssf	Spiraea x bumalda 'Goldflame'	Goldflame Spirea	127	#2pot
Vt	Viburnum trilobum	Nightshrub Cranberry	16	#2pot
Ornamental Grasses, Vines & Groundcover				
Cl	Calamagrostis x acutifolia 'Karl Foerster'	Feather Reed Grass	246	#1pot
Dc	Deschampsia cespitosa	Tuffet Horsetails	134	#1pot
H	Helictotrichon sempervirens	Blue oat Grass	111	#1pot
Ph	Pennisetum alopecuroides 'Flamelet'	Dwarf Fountain Grass	71	#1pot
O	Panicum nodosum 'Columella'	Nigella Creeper	24	#1pot
S	Scilla sibirica 'Sany'	Scilla	24	#10cm pot
V	Vaccinium vitis-idaea	Lingonberry	31	#1pot
Perennials				
Ap	Adiantum pedatum	Maidenhair Fern	10	#1pot
A	Allium cepum	Nodding Onion	80	#1pot
B	Besleria micrantha 'Bressingham Bronze'	Bressingham Bronze Coral Bells	23	#1pot
Lf	Aluminum filix-ferina	Lady Fern	5	#1pot

PROPOSED TREE EXAMPLE IMAGES



1. PLANT MATERIAL AND CONSTRUCTION METHODS WORK AND MATERIALS SHALL MEET OR EXCEED THE CANADIAN LANDSCAPE STANDARDS.
2. ALL PLANTING BEDS SHALL BE WATERED BY AUTOMATIC IRRIGATION SYSTEM
3. TURF AREAS FROM SO SHALL BE NO. 1 GRADE GROWN FROM CERTIFIED SEED AND SHALL BE TOLERANT OF DROUGHT CONDITIONS. A MINIMUM OF 150 MM DEPTH OF GROWING MEDIUM IS REQUIRED BENEATH TURF AREAS. TURF AREAS SHALL MEET EXISTING GRASSES AND BE FLUSH TO ADJACENT HARD SURFACES.
4. REFER TO CIVIL ENG. DWGS FOR SITE GRADING AND DRAINAGE AND WILL ENSURE THAT NO WATER OR LOOSE IMPEDIMENTS WILL BE DISCHARGED FROM THE LOT ONTO ADJACENT PUBLIC, COMMON OR PRIVATE PROPERTIES.



PLANT LIST REFERENCE
SEE L1.0 FOR ALL QUANTITIES & SIZES

SYMBOL	BOTANICAL NAME	COMMON NAME
Trees		
Am	Acer glabrum	Amur Maple
Dm	Acer glabrum	Douglas Maple
Ps	Pinus contorta v. contorta	Shore Pine
W	Quercus rubra x laevis (Edulis White Wonder)	Edulis White Wonder Dogwood
Fs	Fraxinus excelsior	Fraxinus Excelsior
D	Davidia involuta	Dove Tree
Gb	Ginkgo biloba 'Princeton Sentry'	Princeton Sentry Ginkgo
Pz	Prunus serotina 'Goldmann'	Goldmann Stargem Cherry
PpH	Prunus vulgaris 'Hoopii'	Hoopii Spruce
Shrubs		
Bc	Barberry (horizontal) 'Concord'	Concord Barberry
Bn	Barberry (horizontal) 'Rose Glow'	Rose Glow Barberry
CaK	Cornus sericea 'Kelsey'	Dwarf Kelsey Dogwood
Jh	Juniperus communis 'Elyssa'	Common Juniper (horizontal form)
L	Lonicera ciliosa	Trompet Honeysuckle
Lg	Ledum palustre	Laborator Tea
Mr	Malva moschata	Creeping Oregon Grape
Pv	Philadelphus x virginicus	Mock Orange
ps	Philadelphus x virginicus 'Dwarf Snowflake'	Miniature Snowflake Mock Orange
Ra	Ribes alpinum	Alpine Currant
Rhc	Rhododendron macrophyllum	Pacific Rhododendron
Rr	Rhododendron x 'Rampart'	Rampart Rhododendron
RK	Rosa 'Nascent'	Flower Carpet Applause Rose
Rn	Rosa rubra	Noctua Rose
Sc	Sarcococca confusa	Sweet Box
Sr	Sorbaria sorbifolia 'Rufalba'	Constant Sorbus
Ss	Sorbaria sorbifolia	False Spirea
Sr	Sorbaria sorbifolia 'Sem'	Fernleaf False Spirea
Sb	Spiraea japonica 'Rubra'	Spirea
Sif	Spiraea x bumalda 'Goldflame'	Goldflame Spirea
Vt	Viburnum trilobum	Highbush Cranberry
Ornamental Grasses, Vines & Groundcover		
Ck	Calamagrostis x acutifolia 'Karl Foerster'	Feather Reed Grass
Dc	Deschampsia cespitosa	Tufted Hairgrass
H	Hieracium longepedunculatum	Blue Owl Grass
Ph	Pennisetum alopecuroides 'Hameln'	Dwarf Fountain Grass
G	Panicum virgatum 'Chameleon'	Chameleon Grass
K	Koeleria cristata	Koeleria
VV	Vaccinium vitis-idaea	Lingonberry
Perennials		
Ap	Adiantum pedatum	Maidenhair Fern
a	Allium cepa	Nodding Onion
b	Boutanica moranba 'Bressingham Bronze'	Bressingham Bronze Coral Bells
Lf	Lily	Lily Fern

LEGEND

- PROPERTY LINES
- LINE OF UNDERGROUND PARKADE
- BRUSH FINISH CONCRETE WALKWAYS (REFER TO CIVIL DWGS)
- CS DRAIN ROCK 200 MM DEPTH 2" - 4" DIM WASHED COBBLE ROCK ON FILTER FABRIC CW PT WOOD EDGER.
- LAWN = SOD ON 150 MM MIN DEPTH APPROVED GROWING MEDIUM
- FORMAL PLANTING BED CW 60 MM OF FIB RARK MULCH GROUND COVER ON FILTER FABRIC ON APPROVED GROWING MEDIUM. 450 MM MIN DEPTH FOR SHRUBS 700 MM MIN FOR TREES
- NATIVE PLANTING BED CW 60 MM COMPOST MULCH NO FILTER FABRIC ON APPROVED GROWING MEDIUM. 450 MM MIN DEPTH FOR SHRUBS 700 MM MIN FOR TREES
- CIVIL STORMWATER DRAINAGE/ DETENTION AREA (REFER TO CIVIL DWGS)
- PT WOOD PRIVACY FENCE - STYLE & STAIN COLOUR TBD HEIGHT AS NOTED
- 1 200 MM HT. METAL FENCE & GATE (PLAY AREA) COLOUR / STYLE TO MATCH FINISH AT TOP OF CONCRETE WALLS
- BENDER BOARD COMPOSITE EDGER
- WE CONCRETE CURB EDGING
- CC CONCRETE PLANTER WALLS POUR IN PLACE OR ALTERNATIVELY PRECAST CONCRETE BLOCKS
- STACKED TIMBER RAISED PLANTER OPEN FOR SEASONAL PLANTING
- BENCH FIXED TO CONCRETE SURFACE
- DERO ROLLING BIKE RACK SECURED TO CONCRETE WALKWAY (OR APPROVED EQUIVALENT)
- GARBAGE BIN
- AMENITY PLAYGROUND SPACE WITH HABITAT NATURAL PLAY ELEMENTS ON POUR-IN-PLACE RUBBER FALL SURFACING

Date	Revisions	By
April 12, 2022	Preliminary Draft For Review	LS/SD
July 6, 2023	For Review	LS/SD
July 7, 2023	Issue for DP	LS/SD

LAZZARIN SVISDAHL
LANDSCAPE ARCHITECTS

1395 5th Ave Prince George, BC V2L 3L6
250.530.6158 www.lszarch.com

Project
Harbour Hills
625 Third Street
Nanaimo, BC

Sheet Title
**Inset A
West Building
Landscape Plan**

Date April 12, 2022
Scale 1:150 METERS
Drawn By LS/SD
Project No.

Copyright reserved. This drawing and the design are, and all its times remain the exclusive property of Lazzarin Svissdahl Landscape Architects and cannot be used without the Landscape Architect's written consent.

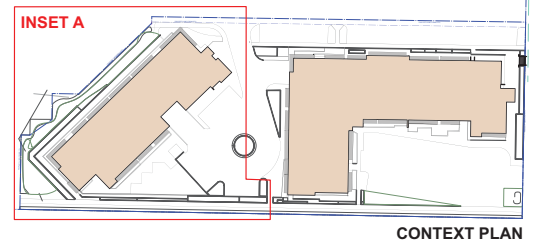
Drawing No.

L 2.0
RECEIVED
DP1275
2023-JUL-26

WEST INSET A
*REFER TO L1.0 FOR PLANT LIST



1. PLANT MATERIAL AND CONSTRUCTION METHODS WORK AND MATERIALS SHALL MEET OR EXCEED THE CANADIAN LANDSCAPE STANDARDS.
2. ALL PLANTING BEDS SHALL BE WATERED BY AUTOMATIC IRRIGATION SYSTEM
3. TURF AREAS FROM SOD SHALL BE NO. 1 GRADE GROWN FROM CERTIFIED SEED AND SHALL BE TOLERANT OF DROUGHT CONDITIONS. A MINIMUM OF 150 MM DEPTH OF GROWING MEDIUM IS REQUIRED BENEATH TURF AREAS. TURF AREAS SHALL MEET EXISTING GRADES AND BE FLUSH TO ADJACENT HARD SURFACES.
4. REFER TO CIVIL ENG. DWGS FOR SITE GRADING AND DRAINAGE AND WILL ENSURE THAT NO WATER OR LOOSE IMPEDIMENTS WILL BE DISCHARGED FROM THE LOT ONTO ADJACENT PUBLIC, COMMON OR PRIVATE PROPERTIES.

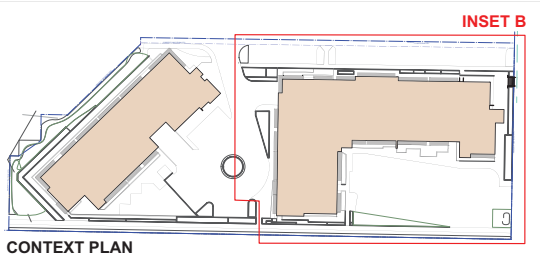
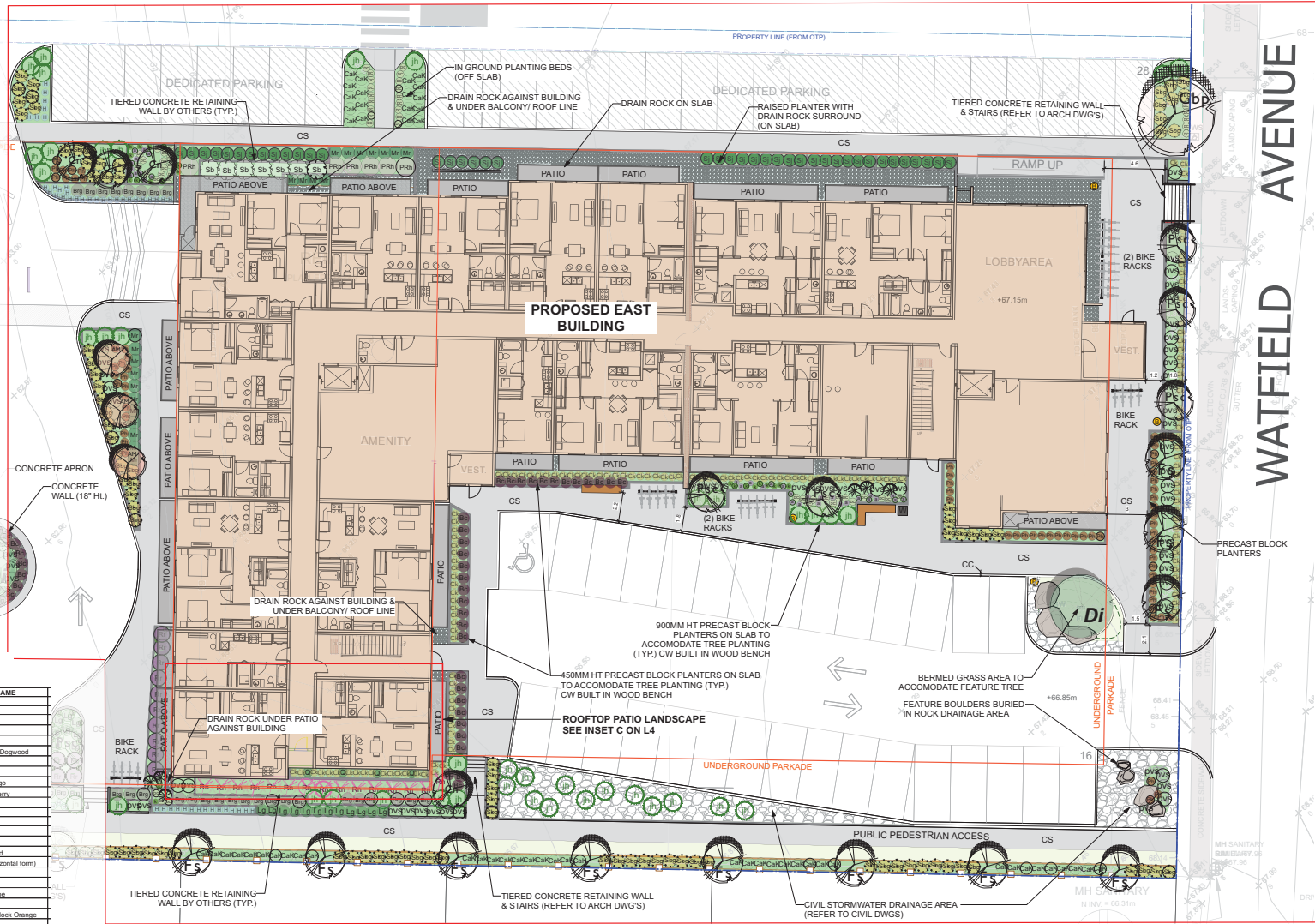


LEGEND

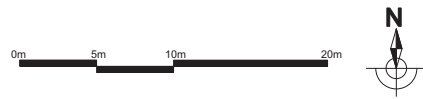
- PROPERTY LINES
- LINE OF UNDERGROUND PARKADE
- CS BRUSH FINISH CONCRETE WALKWAYS - REFER TO CIVIL DWGS
- DRAIN ROCK 200 MM DEPTH 2" - 4" DIM WASHED COBBLE ROCK ON FILTER FABRIC CW PT WOOD EDGER.
- LAWN + SOD ON 150 MM MIN DEPTH APPROVED GROWING MEDIUM
- FORMAL PLANTING BED CW 60 MM OF FIR BARK MULCH GROUND COVER ON FILTER FABRIC ON APPROVED GROWING MEDIUM. 450 MM MIN DEPTH FOR SHRUBS 700 MM MIN FOR TREES
- NATIVE PLANTING BED CW 60 MM COMPOST MULCH NO FILTER FABRIC ON APPROVED GROWING MEDIUM. 450 MM MIN DEPTH FOR SHRUBS 700 MM MIN FOR TREES
- CIVIL STORMWATER DRAINAGE/ DETENTION AREA (REFER TO CIVIL DWGS)
- PT WOOD PRIVACY FENCE - STYLE & STAIN COLOUR TBD HEIGHT AS NOTED
- 1 200 MM HT. METAL FENCE & GATE (PLAY AREA) COLOUR / STYLE MATCH RAILING AT TOP OF CONCRETE WALLS
- BENDER BOARD COMPOSITE EDGER
- CONCRETE CURB EDGING
- CONCRETE PLANTER WALLS POUR IN PLACE OR ALTERNATIVELY PRECAST CONCRETE BLOCKS
- STACKED TIMBER RAISED PLANTER OPEN FOR SEASONAL PLANTING
- BENCH FIXED TO CONCRETE SURFACE
- DERO ROLLING BIKE RACK SECURED TO CONCRETE WALKWAY (OR APPROVED EQUIVALENT)
- GARBAGE BIN

**PLANT LIST REFERENCE
SEE L1.0 FOR ALL QUANTITIES & SIZES**

SYMBOL	BOTANICAL NAME	COMMON NAME
Trees		
Am	<i>Acer spicatum</i>	Amur Maple
Dm	<i>Acer glabrum</i>	Douglas Maple
Ps	<i>Pinus contorta v. contorta</i>	Shore Pine
CW	<i>Cornus nuttallii</i> x <i>Florida</i> (Eddies White Wonder)	Eddies White Wonder Dogwood
SP	<i>Spirea sp. 'Dwarf Purple'</i>	Dwarf Purple Spirea
Di	<i>Davidia involuta</i>	Dove Tree
Gp	<i>Ginkgo biloba</i> 'Princeton Sentry'	Princeton Sentry Ginkgo
Pic	<i>Prunus serotina</i> 'Columbiana'	Columbian Sargent Cherry
Pppl	<i>Pinus parviflora</i> 'Woods'	Woods Spruce
Shrubs		
Rc	<i>Rosa 'Intrigue'</i> 'Concord'	Concord Rose
Rb	<i>Rosa 'Intrigue'</i> 'Rose Glow'	Rose Glow Rose
CaK	<i>Cornus sericea</i> 'Kelsey'	Dwarf Kelsey Dogwood
lh	<i>Juniperus communis</i> 'Effusa'	Common Juniper (horizontal form)
Ls	<i>Lonicera siliqua</i>	Trumpet Honeysuckle
Lg	<i>Ledum onotandicum</i>	Laborer Tea
Mr	<i>Maianthemum repens</i>	Creeping Oregon Grape
Pv	<i>Philadelphus x virginicus</i>	Mock Orange
Pr	<i>Prunella x virginica</i> 'Dwarf Snowflake'	Miniature Snowflake Mock Orange
Ra	<i>Ribes alpinum</i>	Alpine Currant
Rhc	<i>Rhododendron macrophyllum</i>	Pacific Rhododendron
Rr	<i>Rhododendron x 'Ramao'</i>	Ramao Rhododendron
RK	<i>Rosa 'Nisam'</i>	Flower Carpet Appleblossom Rose
Rn	<i>Rosa nutkana</i>	Nootka Rose
Sc	<i>Sarcococca confusa</i>	Sweet Box
Ss	<i>Sorbaria japonica</i> 'Rubra'	Conquest Spirea
Sr	<i>Sorbaria sorbifolia</i> 'Sem'	Ferretail False Spirea
Sb	<i>Sambucus racemosa</i> 'Blackberry'	Blackberry
Sof	<i>Sorbus x bormata</i> 'Goldflame'	Goldflame Spirea
Vt	<i>Viburnum trilobum</i>	Highbush Cranberry
Ornamental Grasses, Vines & Groundcover		
Ck	<i>Calamagrostis x acutifolia</i> 'Karl Foerster'	Feather Reed Grass
Dc	<i>Deschampsia cespitosa</i>	Tufted Hairgrass
H	<i>Helleborus scaber</i>	Blue Owl Grass
Ph	<i>Pennisetum alopecuroides</i> 'Hameln'	Dwarf Fountain Grass
D	<i>Parthenocissus vitacea</i>	Virginia Creeper
K	<i>Actinostichus arvensis</i>	Kentucky Bluegrass
VV	<i>Vaccinium vitis-idaea</i>	Lanternberry
Ferns		
P	<i>Pteris aquilina</i>	Maidenhair Fern
Ap	<i>Adiantum pedatum</i>	Nodding Onion
a	<i>Allium cernuum</i>	Nodding Onion
b	<i>Heuchera moraniana</i> 'Bressingham Bronze'	Bressingham Bronze Coral Bells
Lf	<i>Lady's Mantle</i>	Lady Fern



1. PLANT MATERIAL AND CONSTRUCTION METHODS WORK AND MATERIALS SHALL MEET OR EXCEED THE CANADIAN LANDSCAPE STANDARDS.
2. ALL PLANTING BEDS SHALL BE WATERED BY AUTOMATIC IRRIGATION SYSTEM
3. TURF AREAS FROM SOD SHALL BE NO. 1 GRADE GROWN FROM CERTIFIED SEED AND SHALL BE TOLERANT OF DROUGHT CONDITIONS. A MINIMUM OF 150 MM DEPTH OF GROWING MEDIUM IS REQUIRED BENEATH TURF AREAS. TURF AREAS SHALL MEET EXISTING GRADES AND BE FLUSH TO ADJACENT HARD SURFACES.
4. REFER TO CIVIL ENG. DWGS FOR SITE GRADING AND DRAINAGE AND WILL ENSURE THAT NO WATER OR LOOSE IMPEDIMENTS WILL BE DISCHARGED FROM THE LOT ONTO ADJACENT PUBLIC, COMMON, OR PRIVATE PROPERTIES.



Date	Revisions	By
April 12, 2022	Preliminary Draft For Review	LS/SO
July 7, 2023	Issue for DP	LS/SO

LAZZARIN SVISDAHL
LANDSCAPE ARCHITECTS
1395 5th Ave Prince George, BC V2L 3L6
250-563-6158 www.lsl-landsc.com

Project
Harbour Hills
525 Third Street
Nanaimo, BC

Sheet Title
**Inset B
East Building
Landscape Plan**

Date April 12, 2022
Scale 1:150 METERS
Drawn By LS/SO
Project No.

Copyright reserved. This drawing and the design are, and at all times remain the exclusive property of Lazzarin Svisdahl Landscape Architects and cannot be used without the Landscape Architect's written consent.

Drawing No.
L 3.0
RECEIVED
DP1275
2023-JUL-26