

ATTACHMENT C
SITE PLAN

PLAN OF LOT 24, PLAN 45133, D.L. 47,
WELLINGTON DISTRICT.

RECEIVED

AUG 29 1988

CITY OF NANAIMO
BUILDING INSPECTION DIVISION

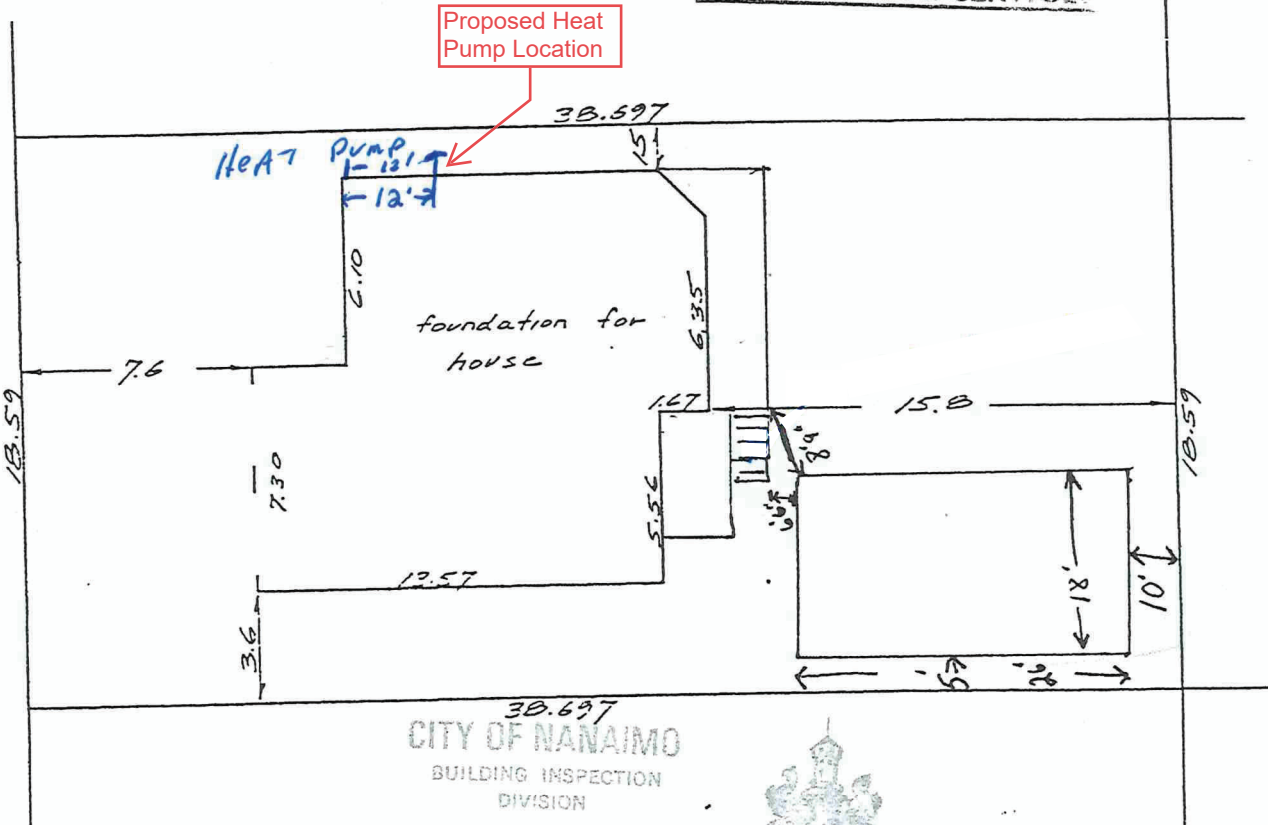
RECEIVED

NOV 28 2003

CITY OF NANAIMO
DEVELOPMENT SERVICES

Showing location of foundation for house thereon
Scale 1:250
All distances are in meters
Blue Pen - feet & inches.

S.M. 7000



CITY OF NANAIMO
BUILDING INSPECTION
DIVISION

PERMIT NO. 30118



NOTE: Plans reviewed for zoning regulations, beam sizes, and maximum percentage of window openings relative to limiting distance only. It is the responsibility of the permit holder to ensure compliance with all relevant City and Provincial regulations.

DATE 1988 SEP 14
SIGNED RA

RECEIVED
DVP458
2023-NOV-28
Current Planning

Certified Correct

George Smythies B.C.L.S.
July 14, 1997.

Charles O. Smythies & Associates
B.C. Land Surveyors & Planners
Nanaimo & Parksville B.C.
File 111-47-GEN

NOV-7334