

Homelessness, Mental Illness and Evidence to Inform Improvement

Julian M Somers

December 11th, 2023
Nanaimo BC



1

Epidemiology and Psychiatric Sciences (2016), 25, 267–277. © Cambridge University Press 2015
doi:10.1017/S2045796015000347

ORIGINAL ARTICLE

The prevalence and geographic distribution of complex co-occurring disorders: a population study

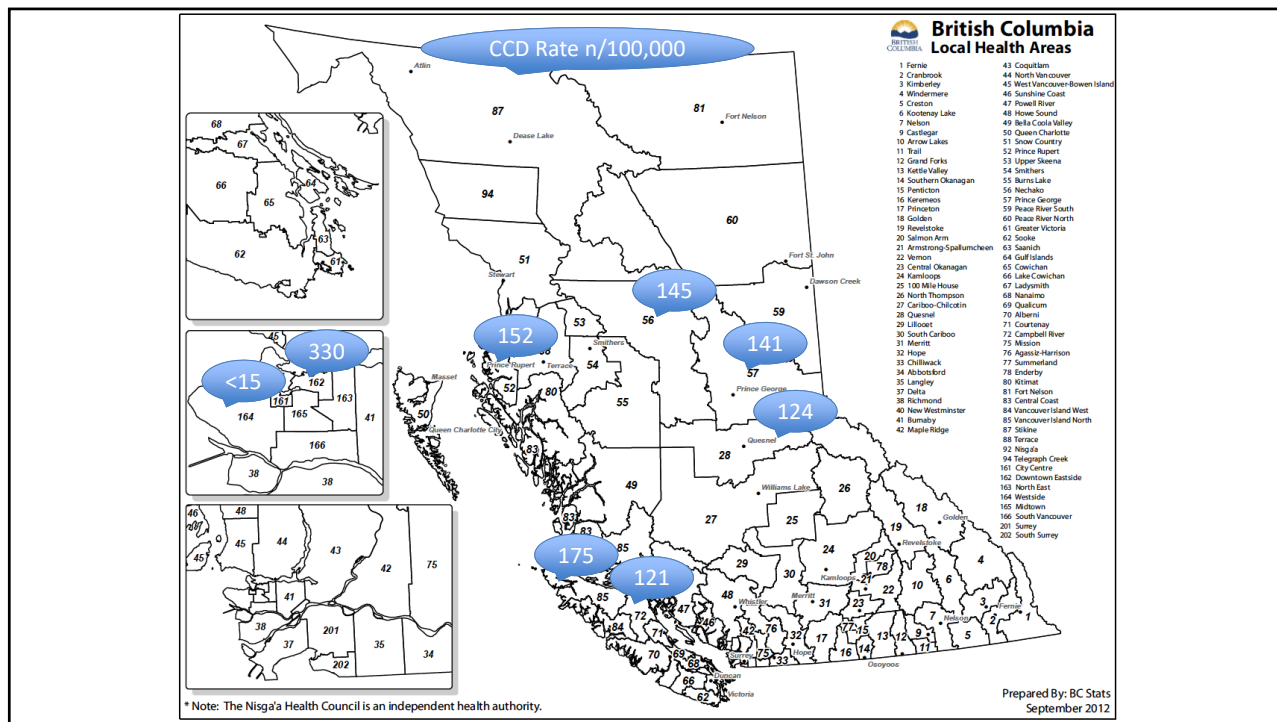
J. M. Somers^{1*}, A. Moniruzzaman¹, S. N. Rezanoff¹, J. Brink² and A. Russolillo¹

In a 5-year period where are the British Columbians who experience:

- Diagnosed mental illness;
- Diagnosed substance use disorder;
- > \$35,000 in social assistance;
- > \$19,000 in shelter support;
- 9 sentences in provincial court;
- 3 acute hospital admissions;
- 5 psychiatric admissions;
- > \$10,000 in MSP services

?

2



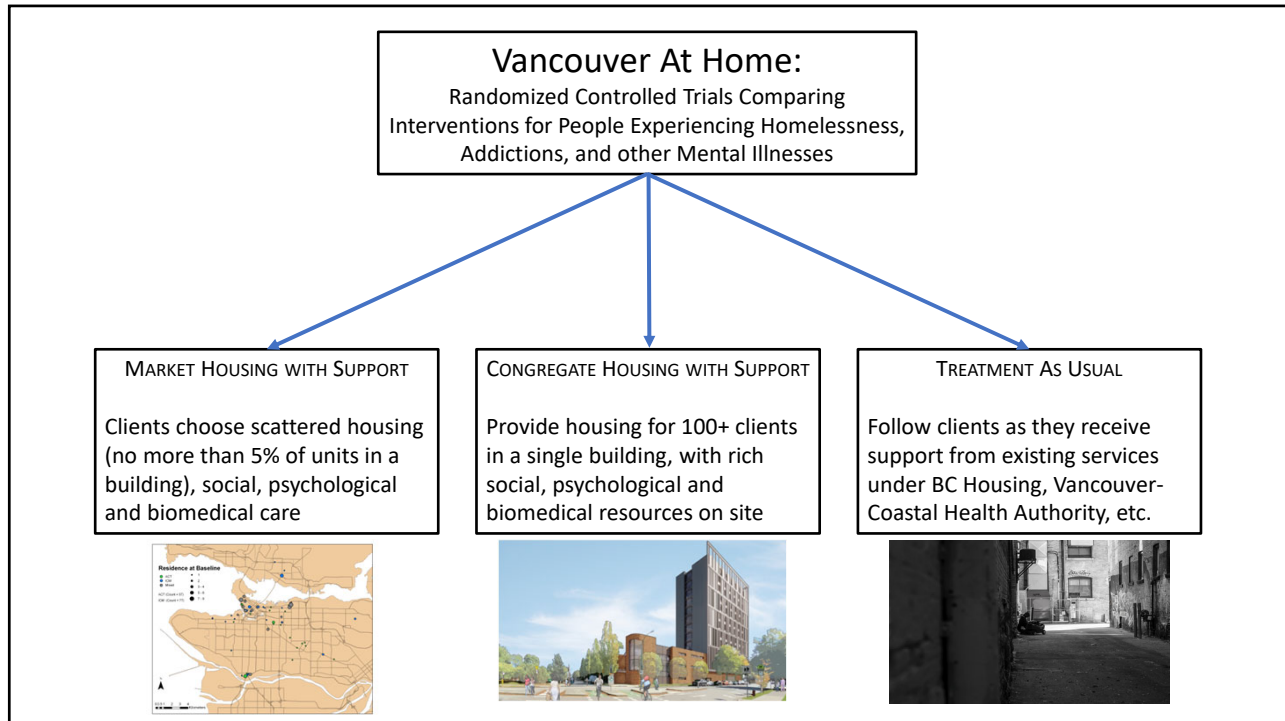
3

500 People Deemed “Hardest to House” in Vancouver¹

- 23% had children <18 years of age
- 62% had worked continuously for at least one year in the past
- 82% wanted paid work
- 32% were suicidal
- 85% moved to Metro Vancouver in past 10 years

1. Somers JM, Patterson ML, Moniruzzaman A, Currie L, Rezansoff SN, Palepu A, Fryer K (2013). *Vancouver At Home*. *Trials* 14(365) <http://www.trialsjournal.com/content/14/1/365>

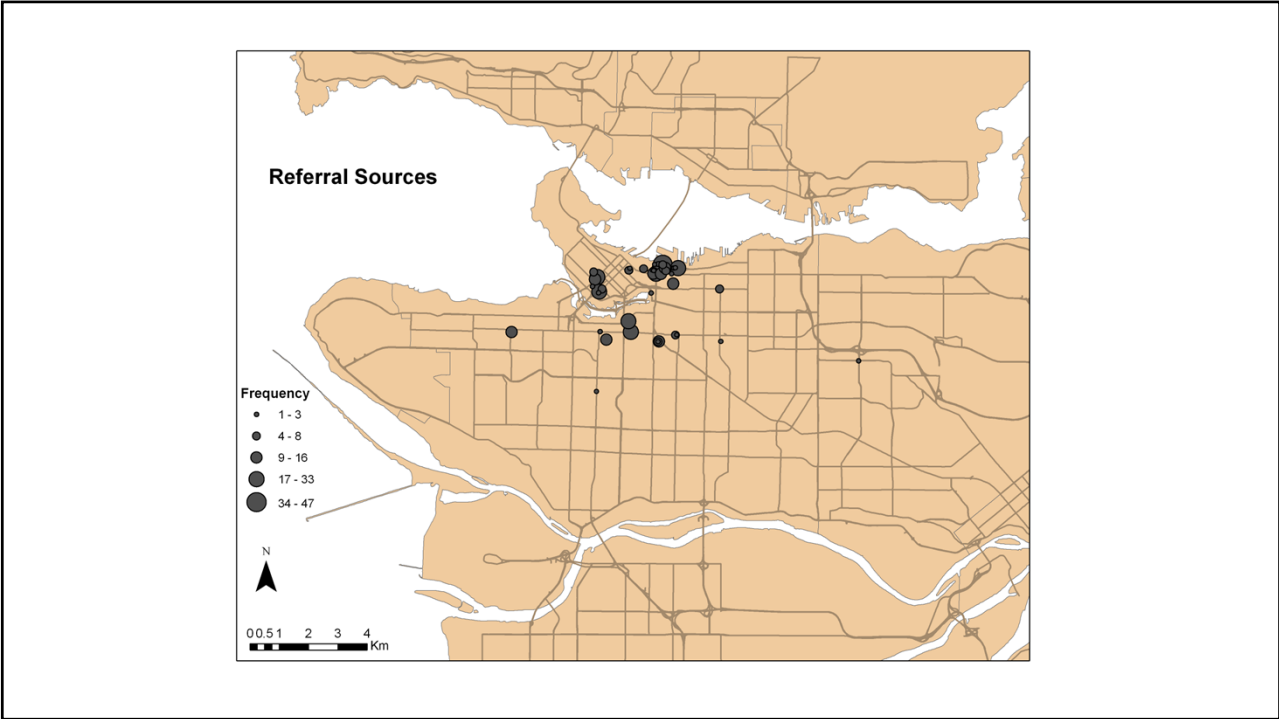
4



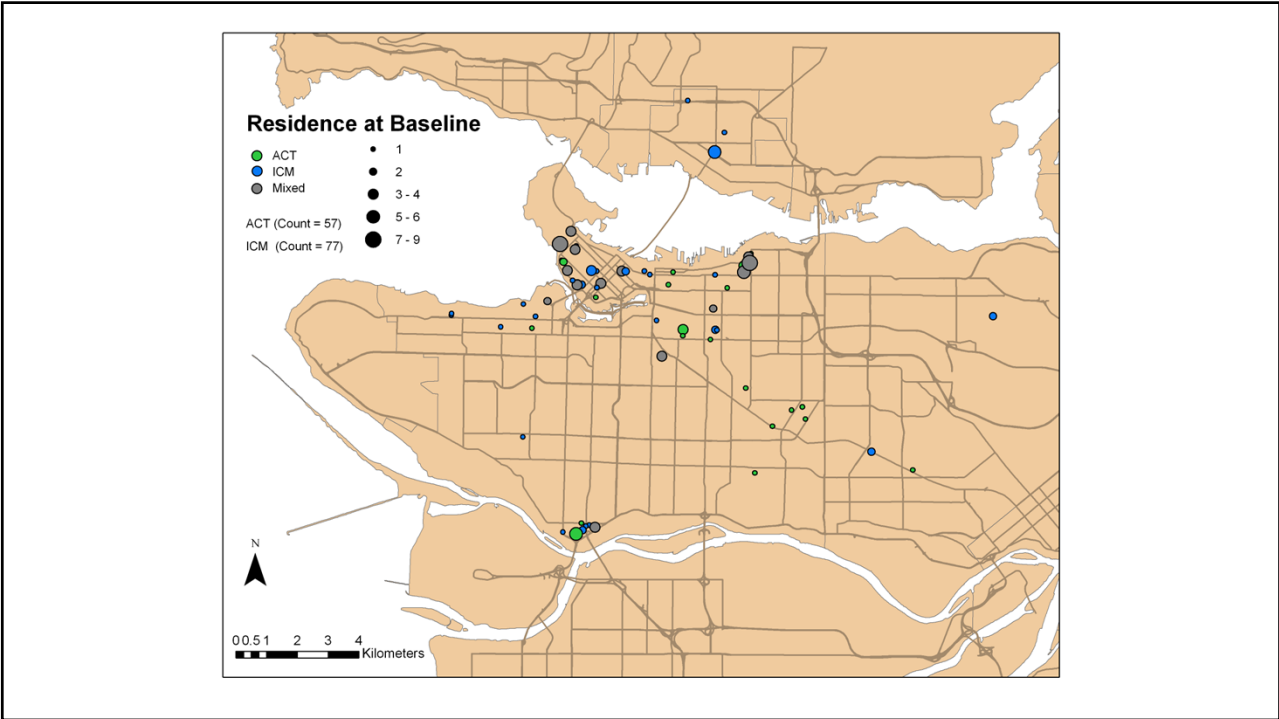
5

- CHIME (Leamy et al., 2011)
- Preference for Independent Housing of Persons with Mental Disorders: Systematic Review and Meta-analysis (Richter & Hoffman, 2017)

6

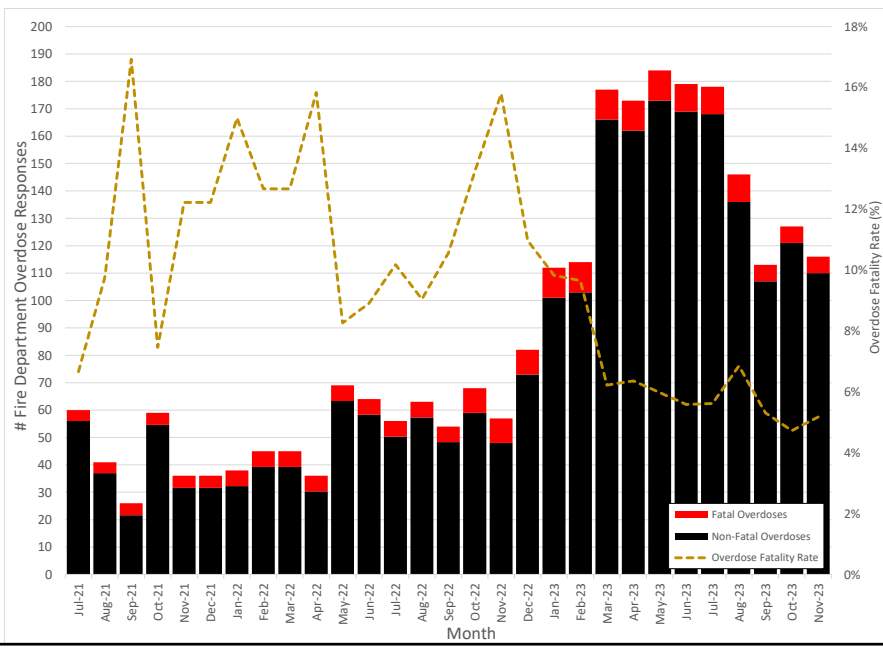


7

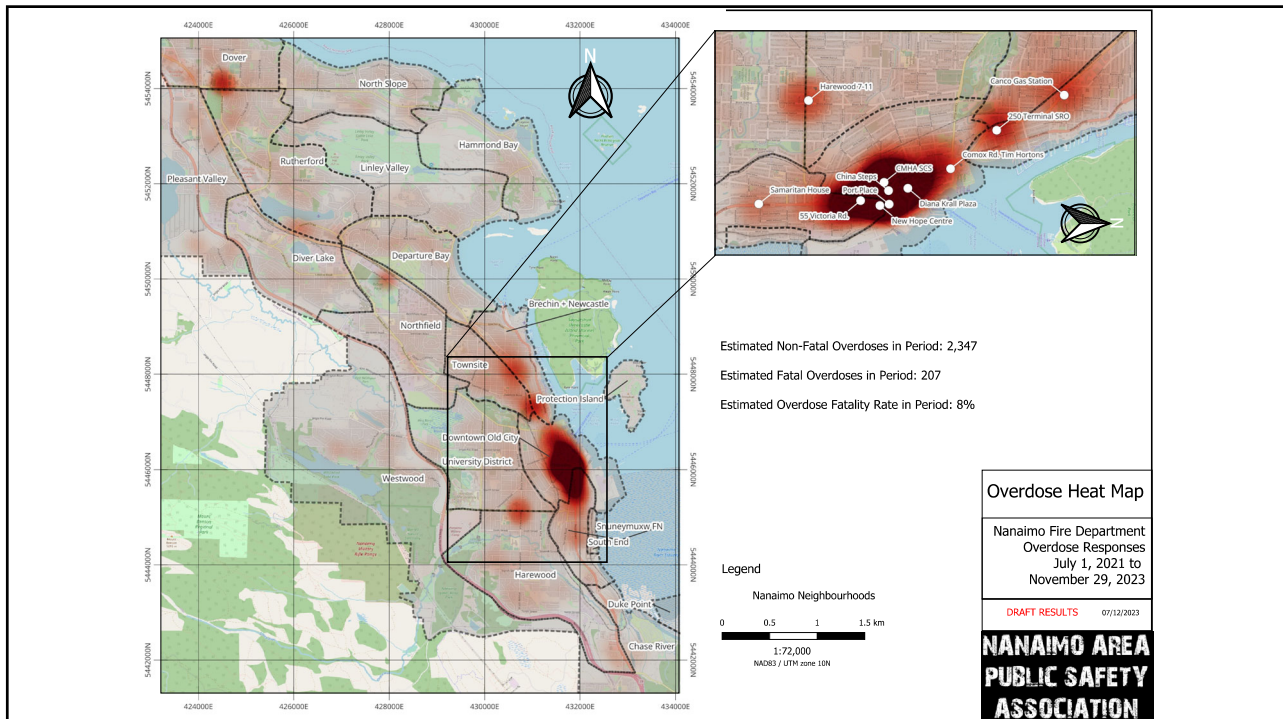


8

NANAIMO AREA PUBLIC SAFETY ASSOCIATION



11



12

SFU SIMON FRASER UNIVERSITY

HOMELESSNESS, ADDICTION & MENTAL ILLNESS:
A CALL TO ACTION FOR BRITISH COLUMBIA

2,200+
British Columbians experience complex co-occurring challenges including long-term homelessness and repeated criminal justice involvement

80%
of the people who experience long-term homelessness, mental illness, and addiction in Vancouver's Downtown Eastside have moved there from outside the Vancouver area

People who require our service have been identified throughout BC

somerspsych.com

13

Increasing Addiction & Despair in BC

- 66% of drug poisonings involved people who earned less than \$500/year¹
- Over 8 years:
 - Involuntary hospitalizations due to Substance Use Disorders increased 2.4 times²
 - The percentage of people in custody diagnosed with a Substance Use Disorders before incarceration increased from 42% to 55%³
- Between 2019 – 2021 suicidal ideation increased more in BC than any other region and affected the highest percentage of the population (5.9%).⁴

1. Carriere G, Sanmartin C, Garner R (2021). *Understanding the sociodemographic profile of people who experienced opioid overdoses in British Columbia, 2014-2016*. Statistics Canada.
 2. Vigo D, Erickson M, Pakhamova T, Lou H, Small W (2019). *Exploring Care Options for Individuals with Severe Substance Use in British Columbia*. For: BC Ministry of Health. Victoria BC.
 3. Somers JM, Moniruzzaman A, Rezanoff SN, Russolillo A, Parpouchi M (2021). *The Increasing Role of Custody in the Management of Addiction in British Columbia*. For: BC Solicitor General. Victoria BC.
 4. Liu L, Pollock NJ, Contreras G, Tonmyr L, Thompson W (2022). *Prevalence of suicidal ideation among adults in Canada: results of the second survey on covid-19 and mental health*. Statistics Canada.

14

SFU

SIMON FRASER
UNIVERSITY

PUBLIC SUPPLY OF ADDICTIVE DRUGS: A RAPID REVIEW

Moniruzzaman A, Rezanoff SN, Somers JM (2022). *Public Supply of Addictive Drugs: Rapid Review*. For Alberta Ministry of Health. Edmonton, AB.



Journal of
COMMUNITY SAFETY & WELL-BEING

REVIEW

The Relationship Between the Legal Status of Drug Possession and the Criminalization of Marginalized Drug Users: A Literature Review

Akm Moniruzzaman, Stefanie N., Rezanoff, and Julian M. Somers*