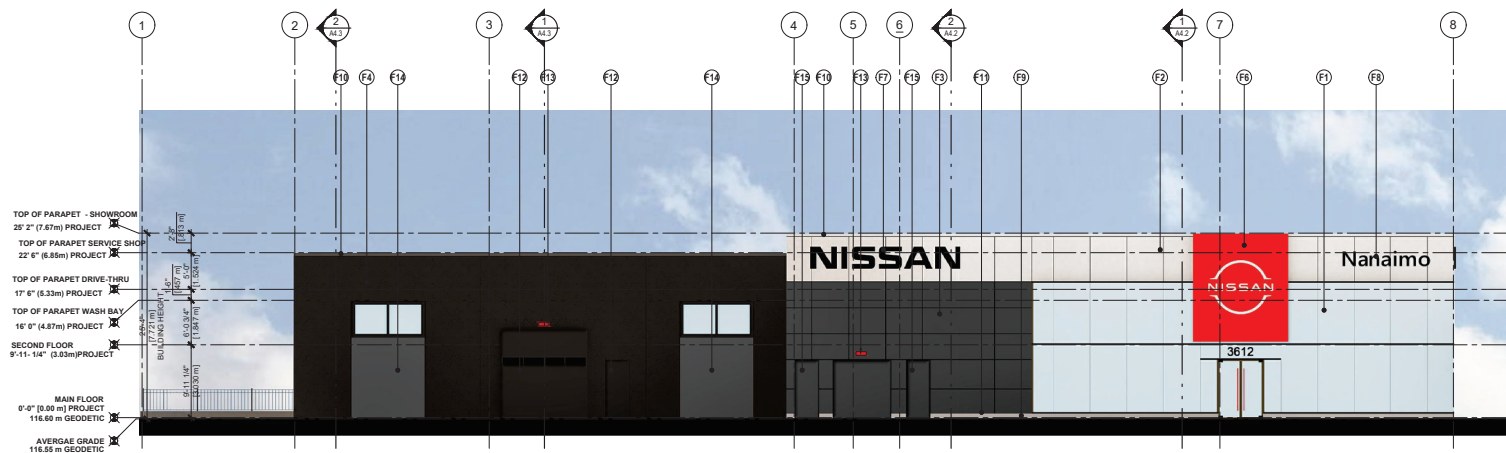
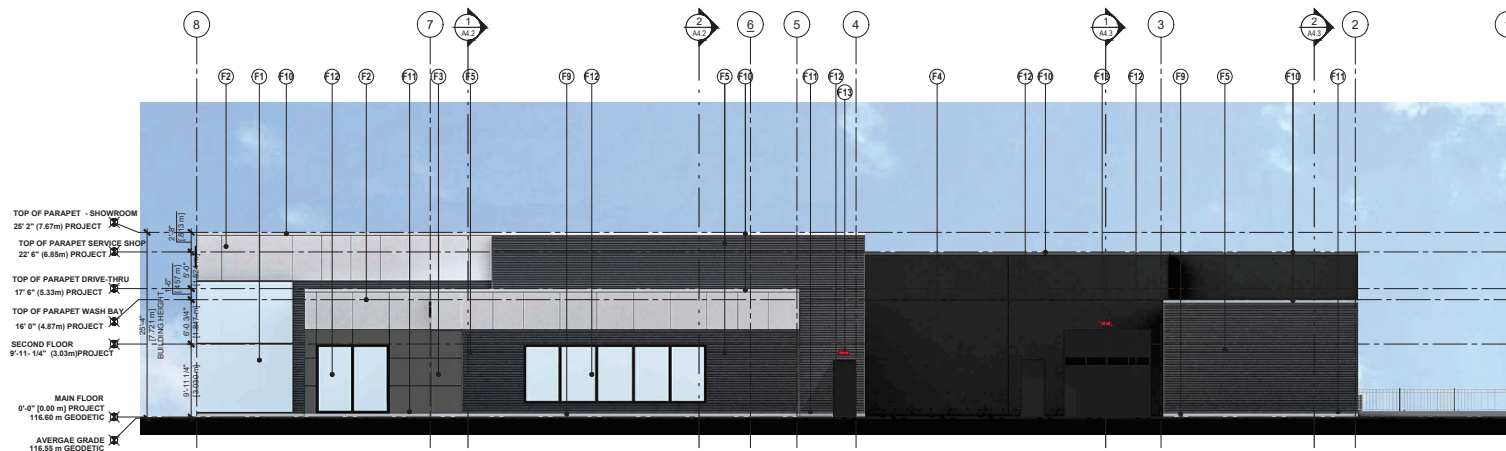


ATTACHMENT D BUILDING ELEVATIONS & DETAILS



1 SOUTH ELEVATION
SCALE: 1/8" = 1'-0"



2 NORTH ELEVATION
SCALE: 1/8" = 1'-0"

EXTERIOR FINISHES & NOTES

- SHOWROOM CURTAIN WALL
CAPLESS VERTICALS WITH DARK GREY HORIZONTALS
GLASS SOLARBAN LOW E 764
FRAME CLEAR ANODIZED
- (F1) FASCIA ALUMINUM COMPOSITE MATERIALS PANEL
COLOR: MTL.C. BOX SILVER METALLIC / SUNRISE SILVER II (PVDF-3/GLASS LEVEL-30) / STERLING SILVER
- (F2) ALUMINUM COMPOSITE MATERIALS PANEL
COLOR: VALFLOX 11324 GRAY / NISSAN GREY / STORMY GREY
- (F3) TILT-UP CONCRETE PANEL PAINTED TO MATCH COLOUR SW 7076 CYBERSPACE (RAL 7024 GRAPHITE GREY)
- (F4) CORRUGATED METAL CLADDING TO MATCH COLOR SW 7076 CYBERSPACE (RAL 7024 GRAPHITE GREY)
- (F5) NISSAN TABLET (ILLUMINATED)
- (F6) NISSAN WORDMARK (ILLUMINATED)
- (F7) DEALERSHIP NAME (ILLUMINATED)
- (F8) CONCRETE CURB
STANDARD GREY CONCRETE COLOR
- (F9) PRE-FINISHED METAL CAP FLASHING
COLOUR TO MATCH ADJACENT CLADDING
- (F10) BASE WALL METAL FLASHING
COLOUR TO MATCH ADJACENT CLADDING
- (F11) EXTERIOR PAINT FOR MISCELLANEOUS FINISHES (DOORS / WINDOWS)
COLOUR RAL 7024 GRAPHITE GREY
- (F12) BUILDING LIGHTING
- (F13) PAINTED TILT-UP CONCRETE TO MATCH ACM COLOR F3 NISSAN GREY
- (F14) EXTERIOR PAINT FOR MISCELLANEOUS FINISHES (DOORS / WINDOWS)
TO MATCH ACM COLOR F3 NISSAN GREY

BUILDING LIGHTING TYPE



Copyright Reserved: These drawings are at all times the property of the Architect. Reproduction in whole or in part without written consent of the Architect is prohibited.



project no.:

issue / revisions:

No.	Issued / Revisions	Date
13		
12		
11		
10	REVISIONS TO DP	20 OCT 23
9	REVISIONS TO DP	15 SEP 23
8	REVISIONS TO DP	20 APR 23
7	DEVELOPMENT PERMIT	23 FEB 23
6	REVIEW	01 FEB 23
5	REVIEW	24 JAN 23
4	REVIEW	04 NOV 22
3	REVISIONS TO BUILDING	11 JUNE 22
2	REVISIONS TO DP DRAFT	10 MAY 22
1	REVIEW	02 JAN 20

alan lowe architect inc.

#118 - 21 Erie St. 1 250.960.2888
Victoria, British Columbia

seal:



project title:
**PROPOSED
NISSAN DEALERSHIP**

3612 & 3690 ISLAND HIGHWAY N
NANAIMO, BC

PROPOSED
ELEVATIONS

project no.: 19-635

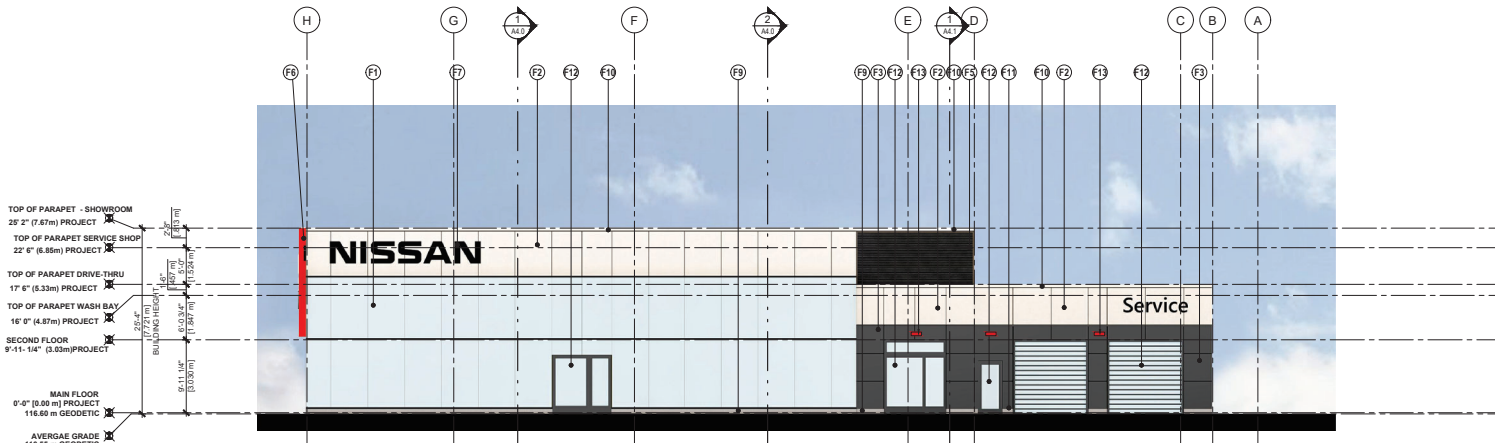
date: 20 OCT 2023 scale: AS NOTED

checked by: LOWE drawn by: DM

sheet no.:

A3.0

RECEIVED
DP1300
2023-OCT-24
Current Planning



1 EAST ELEVATION
SCALE: 1/8" = 1'-0"



2 WEST ELEVATION
SCALE: 1/8" = 1'-0"

EXTERIOR FINISHES & NOTES

- SHOWROOM CURTAIN WALL
CAPLESS VERTICALS WITH DARK GREY HORIZONTALS
GLASS: SOLARBAN LOW E 70L
FRAME: CLEAR ANODIZED
- FASCIA ALUMINUM COMPOSITE MATERIALS PANEL
COLOR: MTL-C SILVER METALLIC / SUNRISE SILVER II (PVDF-3IGLASS LEVEL-30) / STERLING SILVER
- ALUMINUM COMPOSITE MATERIALS PANEL
COLOR: VALFLON 1124 GRAY / NISSAN GREY / STORMY GREY
- FLT-UP CONCRETE PANEL PAINTED TO MATCH COLOR SW 7076 CYBERSPACE (RAL 7024 GRAPHITE GREY)
- CORRUGATED METAL CLADDING TO MATCH COLOR SW 7076 CYBERSPACE (RAL 7024 GRAPHITE GREY)
- NISSAN TABLET (ILLUMINATED)
- NISSAN WORDMARK (ILLUMINATED)
- DEALERSHIP NAME (ILLUMINATED)
- CONCRETE CURB
STANDARD GREY CONCRETE COLOR
- PRE-FINISHED METAL CAP FLASHING
COLOR TO MATCH ADJACENT CLADDING
- BASE WALL METAL FLASHING
COLOR TO MATCH ADJACENT CLADDING
- EXTERIOR PAINT FOR MISCELLANEOUS FINISHES (DOORS / WINDOWS)
COLOR RAL 7024 GRAPHITE GREY
- BUILDING LIGHTING
- PAINTED FLT-UP CONCRETE TO MATCH ACM COLOR F3 NISSAN GREY
- EXTERIOR PAINT FOR MISCELLANEOUS FINISHES (DOORS / WINDOWS)
TO MATCH ACM COLOR F3 NISSAN GREY

BUILDING LIGHTING TYPE



Copyright Reserved: These drawings are at all times the property of the Architect. Reproduction in whole or in part without written consent of the Architect is prohibited.



project name:

issue / revision:

Issue / Revision	Date
13	
12	
11	
10	REVISIONS TO DP 20 OCT 23
9	REVISIONS TO DP 15 SEP 23
8	REVISIONS TO DP 20 APR 23
7	DEVELOPMENT PERMIT 23 FEB 23
6	REVIEW 01 FEB 23
5	REVIEW 24 JAN 23
4	REVIEW 04 NOV 22
3	REVISIONS TO BUILDING 11 JUNE 22
2	REVISIONS TO DP DRAFT 10 MAY 22
1	REVIEW 02 JAN 20
No. Issued / Revisions	Date

alan **lowe** architect inc.

#118 - 21 Erie St. 1 250.360.2888
Victoria, British Columbia

seal:



project title:

PROPOSED NISSAN DEALERSHIP

3512 & 3590 ISLAND HIGHWAY N
VANCOUVER, BC

PROPOSED ELEVATIONS

project no.: 19-635

date: 20 OCT 2023 scale: AS NOTED

checked by: LOWE drawn by: DM

sheet no.:

A3.1

RECEIVED
DP1300
2023-OCT-24
Current Planning