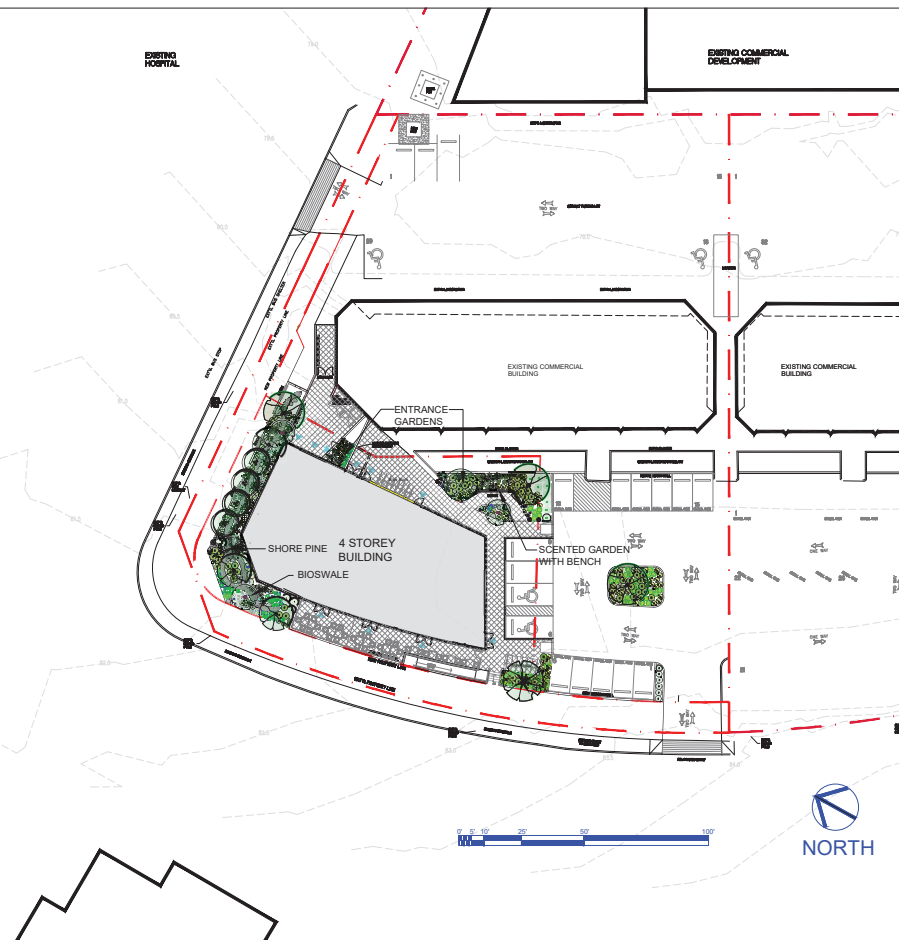


# ATTACHMENT F LANDSCAPE PLAN AND DETAILS

HOSPITAL COMMONS LOT A - - - - - LANDSCAPE CONCEPT - - - - - 1588 BOUNDARY CRESCENT

## DESIGN ELEMENTS



LANDSCAPE PLAN

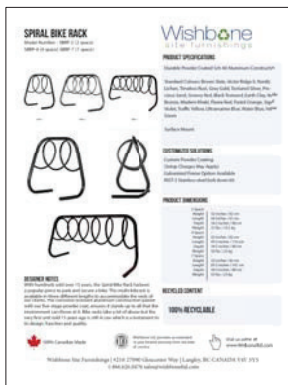
For Planting Plan  
see L0.2

N.T.S.

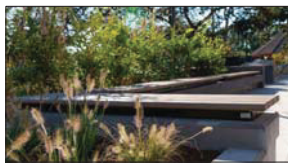
- Bioswale Gardens:**
- Bioswale stormwater function
  - Dry stream bed/large rock features reflect regional character of Mt Benson
  - Layered/seasonal plantings for aesthetics and biodiversity
  - Plants selected according to aspect/microclimates
    - Shade plants on north side
    - Sun loving plants on the west side

- Entrance gardens:**
- A scented garden with seating
  - Canopy shade trees
  - Flowers and colours for each season

### DESIGN DETAILS



DETAIL #1 - BIKE RACKS  
TO BE WISHBONE SBRP-7, OR EQUIVALENT



DETAIL #2 - BENCH  
TO BE WISHBONE BACKLESS WALL TOP, OR EQUIVALENT



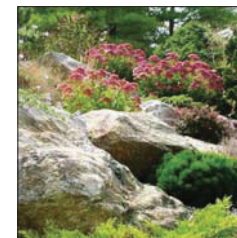
Shore Pine



Bioswale



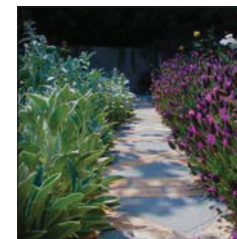
Shade plants for north facing gardens



Sun loving plants for south facing gardens



Clerodendrum



Scented plants

NOTES:  
ALL GRADES APPROXIMATE;  
TO BE CO-ORDINATED WITH  
CIVIL.

NOT FOR  
CONSTRUCTION

REVISIONS:

- Issued for DP Review - 2022Apr01
- Issued for DP - 2022Apr04
- Re-issued for DP - 2022Jun10
- CoN Comprehensive Letter - 2023Mar06
- CoN Comprehensive Letter - 2023Mar27
- Re-issued for DP - 2023Oct06

CONSULTANT:



PROJECT:

HOSPITAL  
COMMONS  
LOT A

SITE LEGAL DESCRIPTION:

1588 Boundary Crescent,  
Nanaimo, BC  
Lot 2, Section 1, District Lot 976,  
Newcastle reserve, Nanaimo District,  
Plan 27521

SHEET TITLE:

CONCEPTUAL  
LANDSCAPE  
DESIGN  
ELEMENTS

SCALE: AS NOTED DATE: MAR. 30, 2022

DRAWN: DR CHECKED: VJD

PROJECT NUMBER: HC LOT A 2022

DRAWING NUMBER:

L0.1/DP

MUN. DWG#:

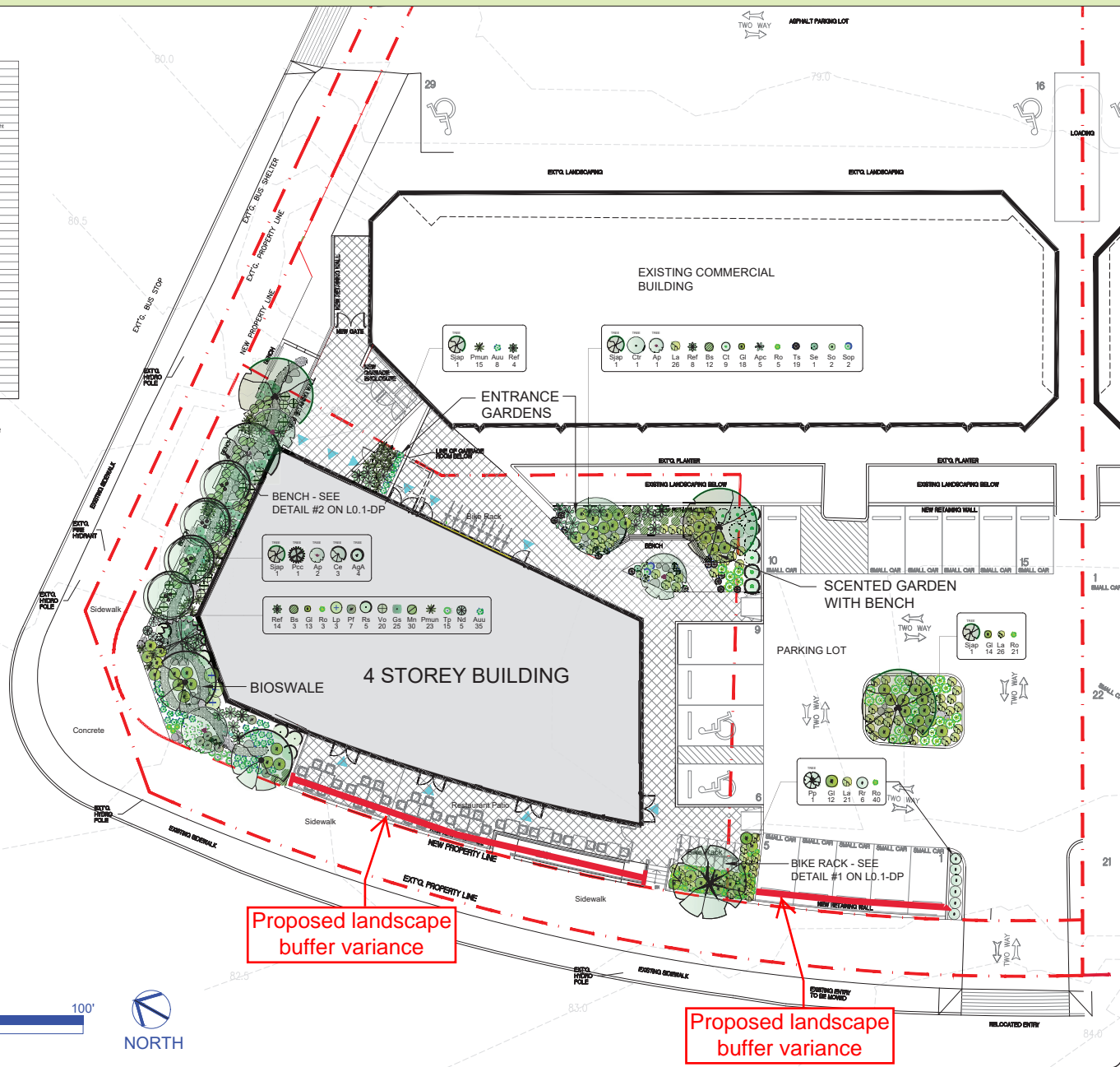


HOSPITAL COMMONS LOT A - - - - - LANDSCAPE CONCEPT - - - - - 1588 BOUNDARY CRESCENT

PLANT PALETTE

Key	Qty	Botanical Name	Common Name	Pot Size	Spacing
<b>Deciduous Trees</b>					
Ap	3	Acer palmatum	Japanese Maple	2.5m	medium
AgA	4	Amelanchier grandiflora Autumn Brilliance	Savoyberry	10 gal	
Cr	1	Cornus alternifolia	Flowering Dogwood	25 gal	
Ca	3	Cornus alba white wonder	Eden White Wonder Dogwood	6 cm cal	spacing 1.8m
Pp	1	Parrotia persica	Persian Ironwood	6 cm cal	spacing 1.8m branching fr.
Ssp	3	Shyrax asperica	Snowball Tree	6 cm cal	
<b>Coniferous Trees</b>					
Poc	1	Pinus contorta contorta	Shore Pine	1.5m	
<b>Deciduous Shrubs</b>					
Pr	7	Potentilla fruticosa	Potentilla	#1	
Rr	6	Rosa rugosa	Shrub Rose	#1	
Hs	5	Hibes sanguineum	Red flowering Currant	#1	
<b>Evergreen Shrubs</b>					
App	5	Artemisia Flossa Castle	Flossa Castle Artemisia	#1	
Bs	15	Buxus sempervirens	Boxwood (green variety)	#2	
Cl	9	Chrysa ternata	Mexican Orange Blossom	#1	
Lp	3	Lonicera pileata	Wooded Honeysuckle	#1	
Raf	26	Rhododendron Elsie Fry	Elsie Fry Rhododendron	#2	3'x' flagrant whitepink
Vs	20	Vaccinium corymbosum	Evergreen Huckleberry	#1	
<b>Evergreen Groundcovers</b>					
Aus	43	Actinophylos ulex ulex	Kinnikinnick	10 cm	
Sk	26	Galium aparine	Wax	#1	
Mn	30	Marrubium vulgare	Oral Oregon Grape	#1	
Pinu	38	Polystichum munitum	Sword Fern	#1	
<b>Shrubs perennials groundcovers</b>					
Gl	57	Galium aparine	Saltwort plant	#1	
La	73	Lavandula angustifolia	Lavender	#1	
Nd	5	Nepeta sibirica	Catmint	#1	
Rb	69	Ribes sanguineum	Rosehip	#1	
Se	1	Salvia elegans	French Sage	#1	
So	2	Salvia officinalis	Common Sage	#1	
Sop	2	Salvia officinalis Purpurascens	Purple Leaved Sage	#1	
Tp	15	Thymus pseudolanuginosus	Woolly Thyme	10 cm	
Tk	19	Thymus serpyllum Magic Carpet	Creeper Thyme	10 cm	

NOTE: The plants for this scheme will be chosen from the Plant Palette as appropriate. Not all plants will necessarily be used and others may be substituted depending on availability and suitability. The plant numbers are based on the conceptual plan and may change during the development of the Building Permit drawing.



LANDSCAPE PLAN  
Scale: 3/32" = 1'-0"



NOTES:  
ALL GRADES APPROXIMATE.  
TO BE CO-ORDINATED WITH  
CIVIL.

NOT FOR  
CONSTRUCTION

REVISIONS:

- Issued for DP Review - 2022Apr01
- Issued for DP - 2022Apr04
- Re-issued for DP - 2022Jun10
- CoN Comprehensive Letter - 2023Mar06
- CoN Comprehensive Letter - 2023Mar27
- Re-issued for DP - 2023Oct06



PROJECT:  
**HOSPITAL  
COMMONS  
LOT A**

SITE LEGAL DESCRIPTION:  
1588 Boundary Crescent,  
Nanaimo, BC  
Lot 2, Section 1, District Lot 976,  
Newcastle reserve, Nanaimo District,  
Plan 27521

SHEET TITLE:  
**CONCEPTUAL  
LANDSCAPE  
DESIGN SCHEME**

SCALE: AS NOTED DATE: MAR. 30, 2022  
DRAWN: DR CHECKED: VJD

PROJECT NUMBER: HC LOT A 2022  
DRAWING NUMBER:

**L0.2/ DP**  
MUN. DWG#: