



1

This slide has a blue header with the City of Nanaimo logo on the right. The main title "Background" is in large white font on the left. Below the title are three images: 1) A cover for the "Design Commercial Downtown Reimagined Final Report" featuring a rainbow-colored building icon and the City of Nanaimo logo. 2) A photograph of four people gathered around a table, looking at and pointing to architectural plans. 3) A 3D architectural rendering of a street scene with cars, trees, and buildings, with the text "Commercial Street" written vertically on the road surface. The City of Nanaimo logo and "Prepared by TOOLE DESIGN" are visible at the bottom of the slide.

2

CITY OF NANAIMO  
THE HARBOUR CITY

## Design Principles

**CONNECTED**  
A clear and intuitive route between the waterfront and surrounding neighbourhoods will encourage and enable people to access downtown.

**CONVENIENT**  
Easy access to walking paths and the availability of safe and secure parking for cars and bicycles will remove barriers and encourage people to spend time downtown.

**COMFORTABLE**  
Provision of ample room for walking, traffic calming, and ample spaces for people to stay and play will enhance the comfort of Commercial Street for visitors, residents, and businesses.

**ENGAGING**  
Adding colour through greening and public art and enabling public events that bring people downtown will create a space that is engaging and inviting.

3

CITY OF NANAIMO  
THE HARBOUR CITY

## Design Principles

**ACCESSIBLE**  
Wider sidewalks, flush curbs, and continuous crossings and public spaces, combined with places to sit, play, or relax, create a downtown that is enjoyed by all ages and abilities.

**LEGIBLE**  
Contrasting colours and materials, and delineation through use of trees and clearly defined parking, will create a space that is legible and easy to navigate in all seasons.

**SAFE**  
Measures that reduce conflicts between road users, reduce isolated or dark spaces and increase visibility through lighting will create a safer environment.

4

## Design Principles



### EQUITABLE

Equitable design encourages visitors of all ages, abilities, backgrounds, and economic means to enjoy the street and its plazas without discrimination or exclusion.



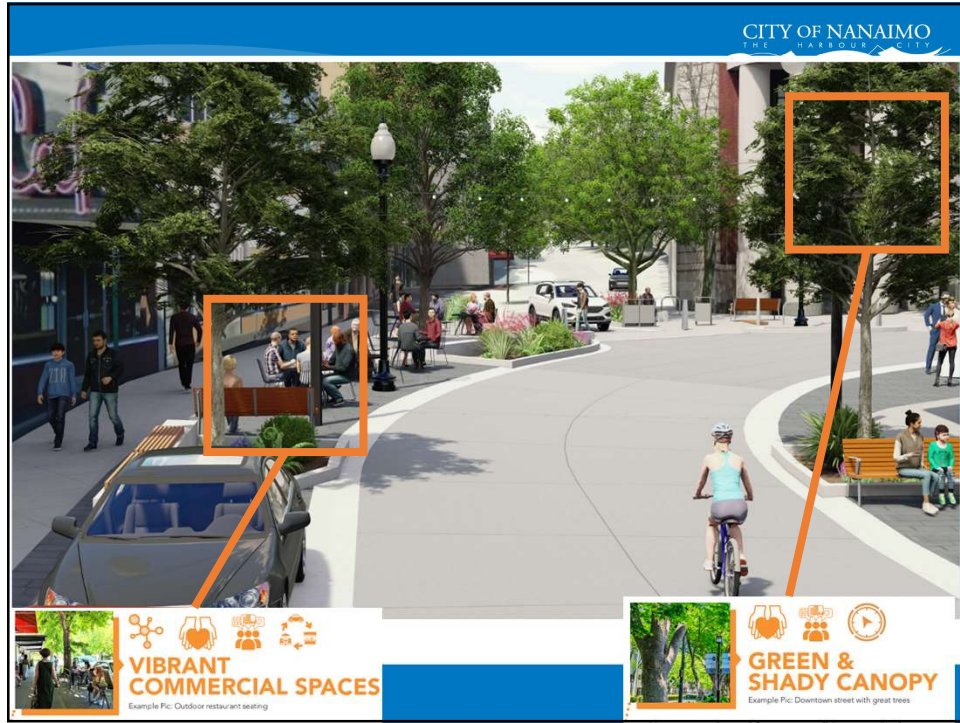
### FLEXIBLE

Flush curbs, flexible parking areas, and continuous spaces through intersections and plazas allow for flexibility in the use and enjoyment of downtown while supporting a sustainable and resilient future.

5



6



7



8



9

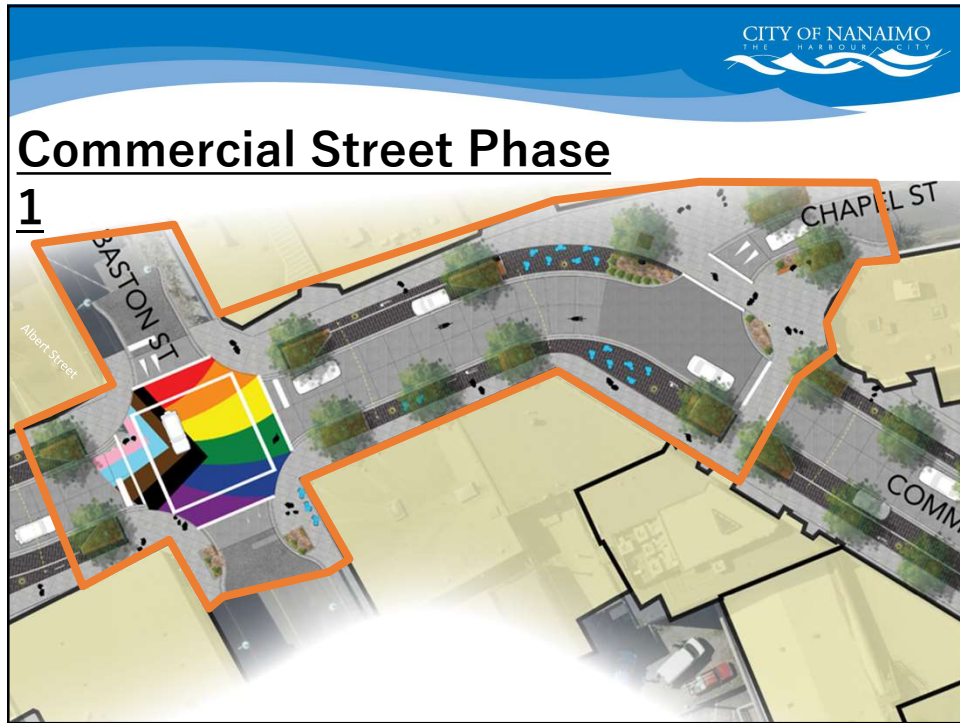
**Consultation**

- Pride Society
- Royal Canadian Legion
- Downtown Merchants (Phase 1&2)
- DNBA
- Night Market

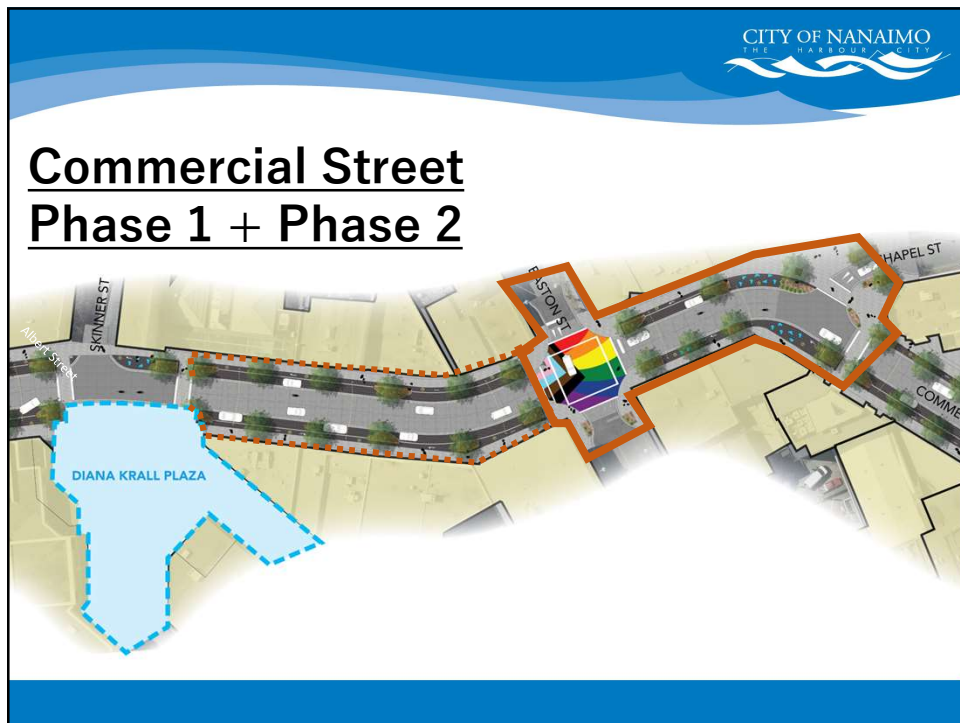


CITY OF NANAIMO  
THE HARBOUR CITY

10



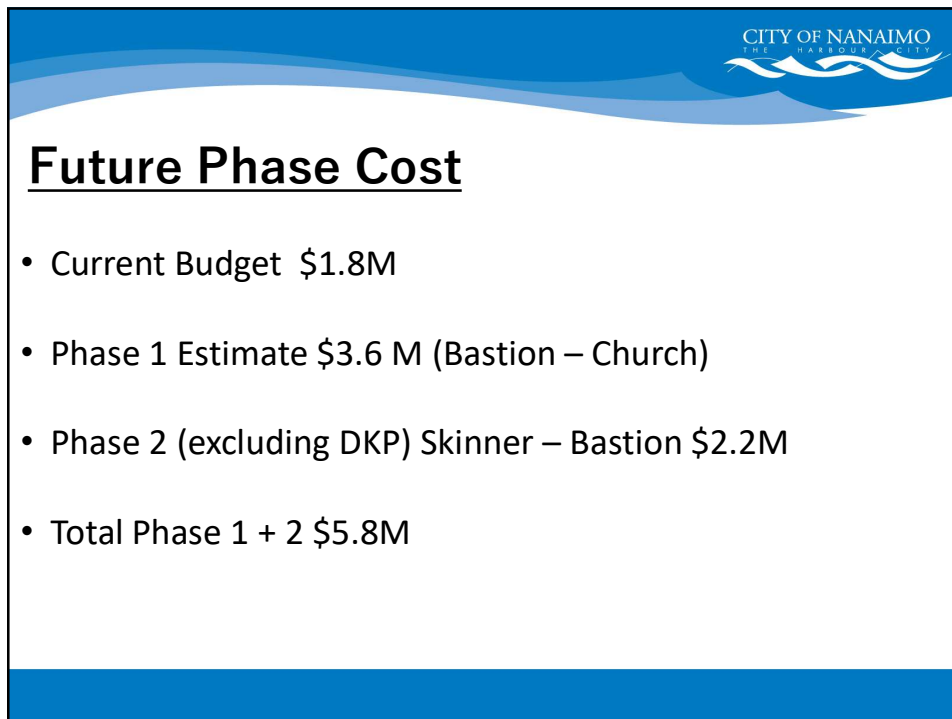
11




12



13




14



## Cost Future Phases

- Phase 2 Dianna Krall Plaza ~\$2.3M
- Phase 3 Albert –Terminal ~\$2.7M
- Phase 4 Terminal – Skinner ~\$4.1M
- Phase 5 Church – Front + Dallas Square Park ~\$6.1M

15



## Schedule

	Oct-23	Nov-23	Dec-23	Jan-24	Feb-24	Mar-24	Apr-24	May-24	Jun-24	Jul-24	Aug-24	Sep-24	Oct-24	Nov-24	Dec-24
Phase 1	Design	Procurement	Construction												
Future Phases	DESIGN											Procurement			
Other Downtown Projects															
Terminal Avenue	Construction														
Transit Exchange	Design											Procurement			

16





17