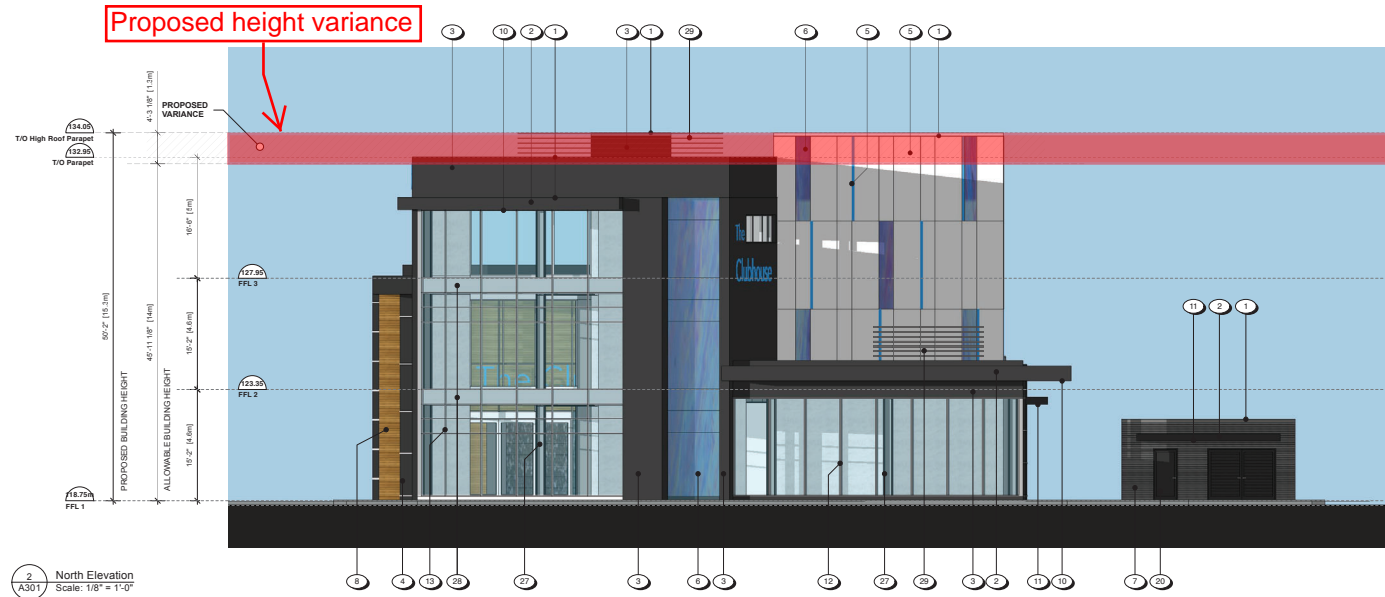
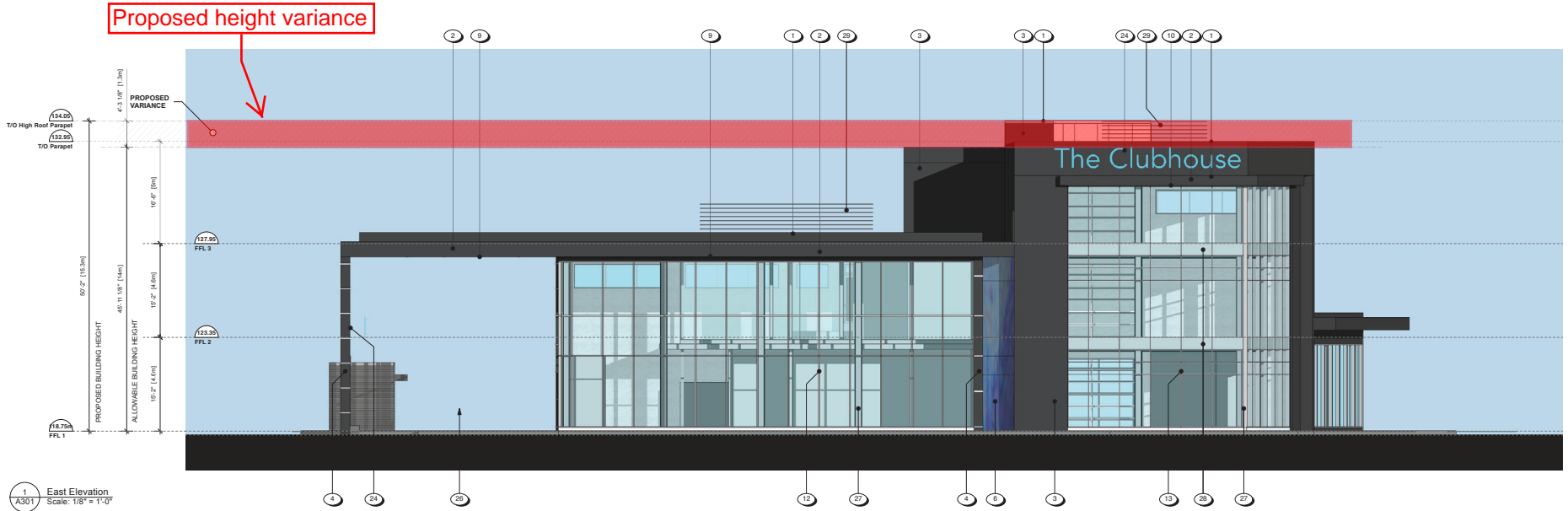
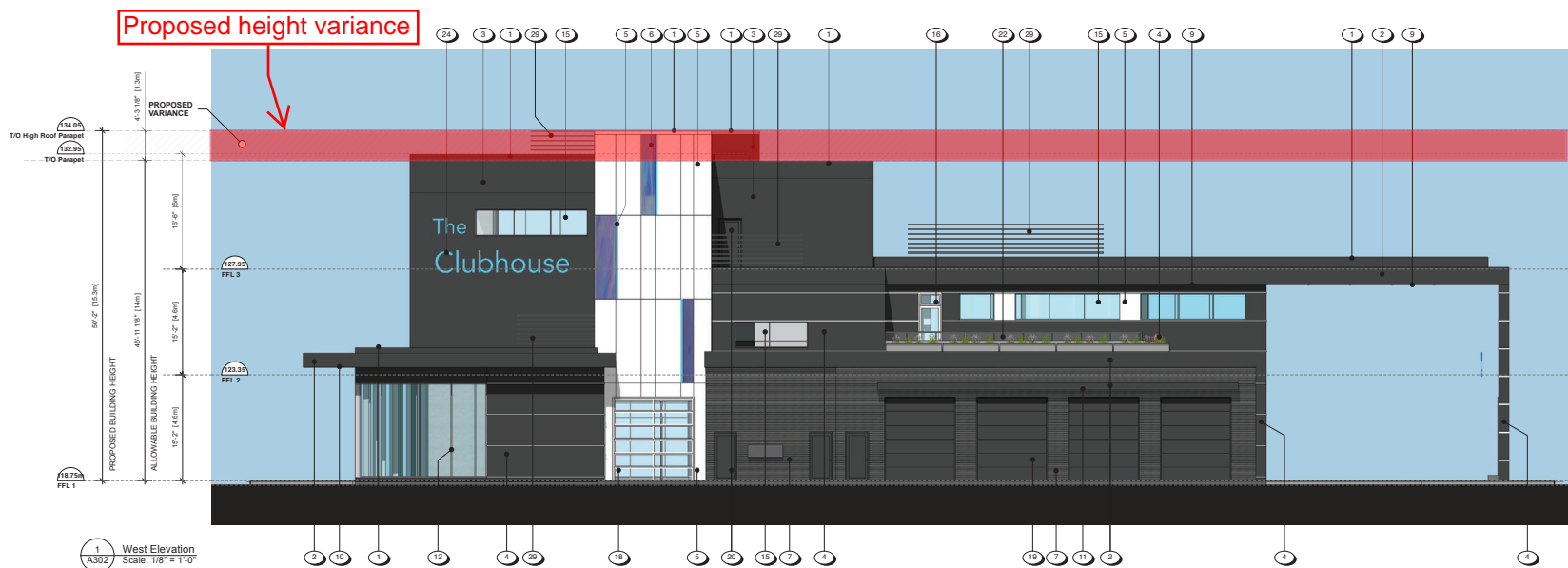


ATTACHMENT D BUILDING ELEVATIONS AND DETAILS

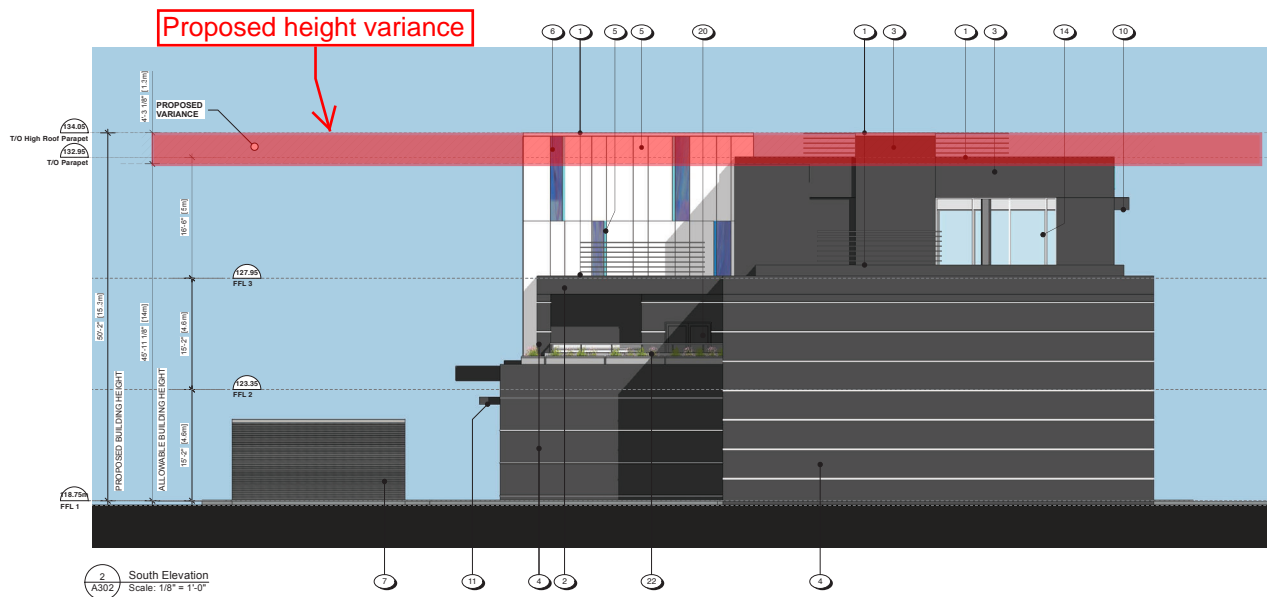


- ### MATERIAL PALETTE
- ① LOW SLOPE MEMBRANE ROOF, IN DARK GREY TONES, WITH PARAPET AND CAP FLASHING
 - ② METAL PANEL FASCIA SIDING, IN ACORN GREY, WITH COLOUR MATCHED FLAT CAP FLASHING
 - ③ METAL PANEL SIDING, IN ACORN GREY, WITH COLOUR MATCHED FLAT CAP FLASHING
 - ④ METAL PANEL SIDING, IN ACORN GREY, WITH REVEAL CAP FLASHING IN WHITE
 - ⑤ METAL PANEL SIDING, IN WHITE, WITH WHITE & ULTRA MARINE REVEAL CAP FLASHING
 - ⑥ METAL PANEL SIDING, IN OIL SLICK, WITH COLOUR MATCHED FLAT CAP FLASHING
 - ⑦ CORRUGATED METAL SIDING, WITH WID RIB PROFILE IN SLATE GREY
 - ⑧ WOOD LOOK METAL PLANK CLADDING, IN DOUGLAS FIR
 - ⑨ WOOD LOOK METAL PLANK SOFFIT, IN DOUGLAS FIR, VENTED
 - ⑩ METAL PANEL SOFFIT, IN OIL SLICK, VENTED
 - ⑪ ALUMINIUM VENTED SOFFIT, IN IRON GREY (GARAGE & GARBAGE ENCLOSURE OVERHANG)
 - ⑫ CURTAINWALL SYSTEM WITH VERTICAL LINING (PRESSURE PLATES), IN ANODIZED ALUMINIUM & STRUCTURAL GLASS
 - ⑬ CURTAINWALL SYSTEM WITH STRUCTURAL GLASS; SPANDREL PANELS AT FLOORS (SEE 28)
 - ⑭ STOREFRONT GLAZING, IN ANODIZED ALUMINIUM
 - ⑮ WINDOW, IN ANODIZED ALUMINIUM
 - ⑯ STOREFRONT DOORS, IN ANODIZED ALUMINIUM
 - ⑰ FOLDING DOOR SYSTEM, IN ANODIZED ALUMINIUM
 - ⑱ OVERHEAD DOOR WITH GLAZED PANELS, IN ANODIZED ALUMINIUM
 - ⑲ OVERHEAD DOOR WITH SOLID PANELS, IN IRON GREY
 - ⑳ SOLID DOOR, IN IRON GREY
 - ㉑ WINDOW, IN ANODIZED ALUMINIUM
 - ㉒ PARAPET WALL IN SLATE GRAY WITH GLASS PANEL GUARDRAIL
 - ㉓ PLANTERS
 - ㉔ SIGNAGE (PLACEHOLDER)
 - ㉕ WATER FEATURE WITH OCEAN PEARL ASHLAR
 - ㉖ PORTE COCHERE
 - ㉗ STRUCTURE (INTERNAL)
 - ㉘ SPANDREL PANEL
 - ㉙ MECHANICAL SCREEN

RECEIVED
DP1279
2023-AUG-18

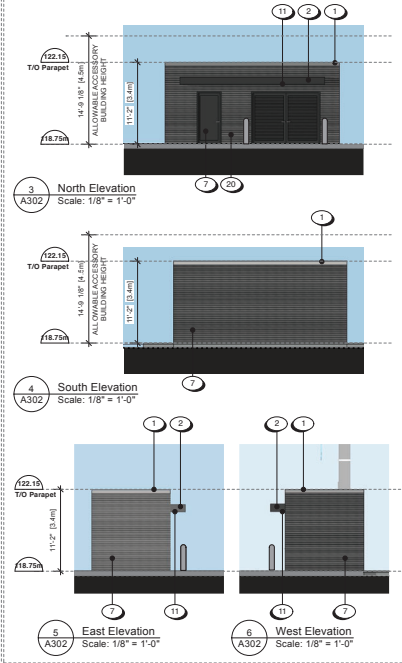


1 West Elevation
A302 Scale: 1/8" = 1'-0"



2 South Elevation
A302 Scale: 1/8" = 1'-0"

ACCESSORY BUILDING ELEVATIONS



3 North Elevation
A302 Scale: 1/8" = 1'-0"

4 South Elevation
A302 Scale: 1/8" = 1'-0"

5 East Elevation
A302 Scale: 1/8" = 1'-0"

6 West Elevation
A302 Scale: 1/8" = 1'-0"

MATERIAL PALETTE

- 1 LOW SLOPE MEMBRANE ROOF, IN DARK GREY TONES, WITH PARAPET AND CAP FLASHING
- 2 METAL PANEL FASCIA SIDING, IN ACORN GREY, WITH COLOUR MATCHED FLAT CAP FLASHING
- 3 METAL PANEL SIDING, IN ACORN GREY, WITH COLOUR MATCHED FLAT CAP FLASHING
- 4 METAL PANEL SIDING, IN ACORN GREY, WITH REVEAL CAP FLASHING IN WHITE
- 5 METAL PANEL SIDING, IN WHITE, WITH WHITE & ULTRA MARINE REVEAL CAP FLASHING
- 6 METAL PANEL SIDING, IN OIL SLICK, WITH COLOUR MATCHED FLAT CAP FLASHING
- 7 CORRUGATED METAL SIDING, WITH WID RIB PROFILE IN SLATE GREY
- 8 WOOD LOOK METAL PLANK CLADDING, IN DOUGLAS FIR
- 9 WOOD LOOK METAL PLANK SOFFIT, IN DOUGLAS FIR, VENTED
- 10 METAL PANEL SOFFIT, IN OIL SLICK, VENTED
- 11 ALUMINIUM VENTED SOFFIT, IN IRON GREY (GARAGE & GARBAGE ENCLOSURE OVERHANG)
- 12 CURTAINWALL SYSTEM WITH VERTICAL LINING (PRESSURE PLATES), IN ANODIZED ALUMINIUM & STRUCTURAL GLASS
- 13 CURTAINWALL SYSTEM WITH STRUCTURAL GLASS; SPANDREL PANELS AT FLOORS (SEE 28)
- 14 STOREFRONT GLAZING, IN ANODIZED ALUMINIUM
- 15 WINDOW, IN ANODIZED ALUMINIUM
- 16 STOREFRONT DOORS, IN ANODIZED ALUMINIUM
- 17 FOLDING DOOR SYSTEM, IN ANODIZED ALUMINIUM
- 18 OVERHEAD DOOR WITH GLAZED PANELS, IN ANODIZED ALUMINIUM
- 19 OVERHEAD DOOR WITH SOLID PANELS, IN IRON GREY
- 20 SOLID DOOR, IN IRON GREY
- 21 WINDOW, IN ANODIZED ALUMINIUM
- 22 PARAPET WALL IN SLATE GRAY WITH GLASS PANEL GUARDRAIL
- 23 PLANTERS
- 24 SIGNAGE (PLACEHOLDER)
- 25 WATER FEATURE WITH OCEAN PEARL ASHLAR
- 26 PORTE COCHERE
- 27 STRUCTURE (INTERNAL)
- 28 SPANDREL PANEL

RECEIVED
SP1279
2023-AUG-18
LUMBERVILLE

2595 Bowen Road
Nanaimo, BC
18 AUG 2023

The Clubhouse

RE-ISSUED FOR DEVELOPMENT PERMIT

A302
Elevations

dHKarchitects dHka