

Basic Shelter

Structure Types

2023-JUN-19

Tent Shelters



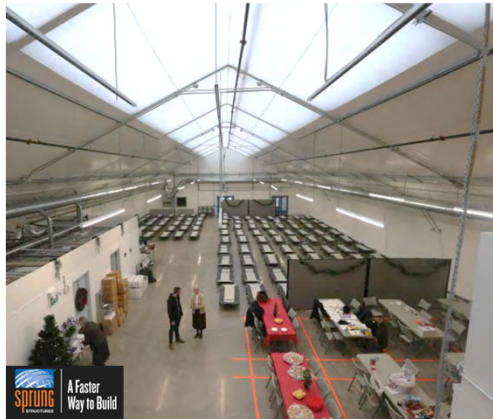
Bowen Park Picnic Shelter



Picnic Shelter Example

\$2,000 – \$5,000 per structure
\$34,000 - \$62,500 for up to 100 tents

Sprung-Structure



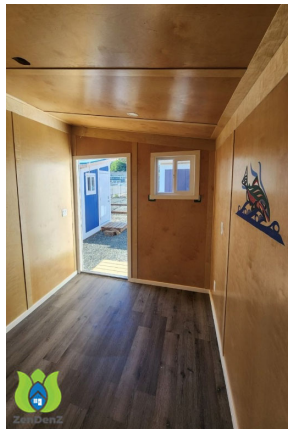
Images provided by: Sprung Structures

24-Hour Respite Centre, City of Toronto

\$5,646 per bed
\$564,582 for 100 beds

Cabin Village

Images provided by: Zen Denz



Images provided by: Nexus Modular Solutions

Port Alberni Watyqit Tiny Home Village Units – Exterior & Interior

Cowichan Emergency Shelter Units

\$4,000 – \$14,500 per unit
\$400,000 - \$1.4 million for 100 Cabins

Cabin Village

Images provided by: Pallet

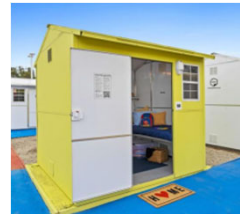


Image provided by: ZenDenZ

Cabin Villages, Boston (bottom, left) and LA (right)

Interior – Vancouver Cabin

\$4,000 – \$14,500 per unit
\$400,000 - \$1.4 million for 100 cabins

Workforce Housing

Images provided by: Nanaimo News Now, Nanaimo News Bulletin



Image provided by: Island Crisis Care Society

Newcastle Place, Nanaimo

\$21,000 – \$45,000 per unit
\$2.1 million - \$4.5 million for 100 units

Workforce Housing

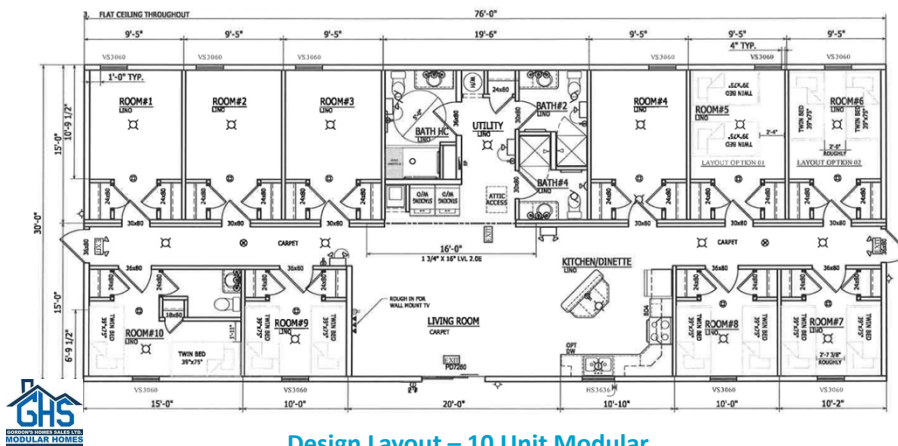


Images provided by: ATCO Structures & Logistics

Dorm-Style Workforce Housing

\$21,000 – \$45,000 per unit
\$2.1 million - \$4.5 million for 100 units

10 Unit Modular

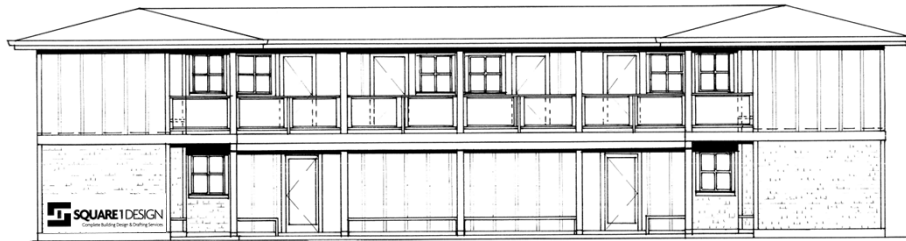


Design provided by: Gordon Homes Ltd.

Design Layout – 10 Unit Modular

\$47,590 per unit
\$4.76 million for 100 units (10 modulares)

Site Built

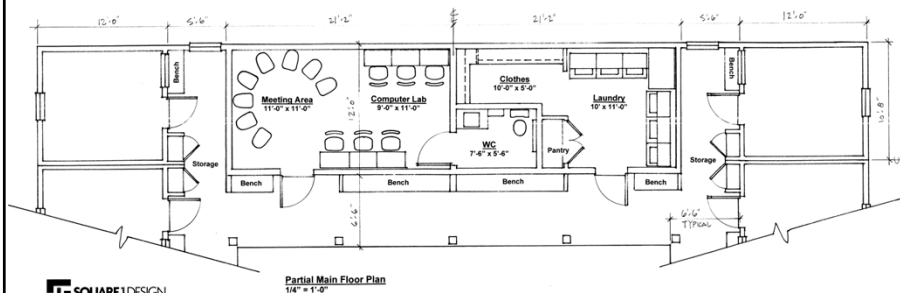


Design provided by: Square One Design Ltd. ©

Preliminary Layout Designs – 12 Units (Main Floor) 16 Units (2nd Floor)

\$50,000 per unit
\$4.2 million (84 units)

Site Built



Design provided by: Square One Design Ltd. ©

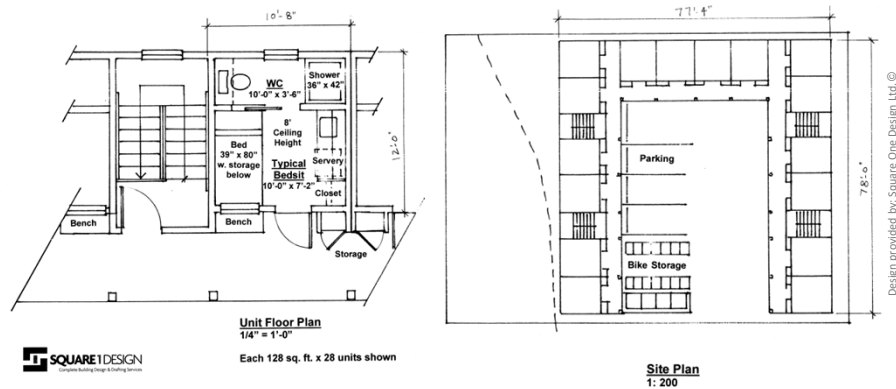
SQUARE1DESIGN
COMMERCIAL BUILDING DESIGN & BUILDING SERVICES

Partial Main Floor Plan
14'4" x 1'-0"

Preliminary Layout Designs – 12 Units (Main Floor) 16 Units (2nd Floor)

\$50,000 per unit
\$4.2 million (84 units)

Site Built



Preliminary Layout Designs – 12 Units (Main Floor) 16 Units (2nd Floor)

\$50,000 per unit
\$4.2 million (84 units)

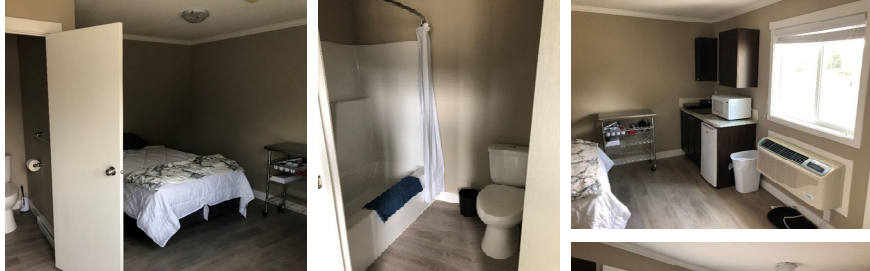
Fourplex Modular



Snuneymuxw First Nation– 12 Units

\$70,000 per unit
\$7 million for 100 units (25 modulars)

Fourplex Modular



Images provided by: Snuneymuxw First Nation

Snuneymuxw First Nation– Interior Photos

\$70,000 per unit
\$7 million for 100 units (25 modulars)

Multi-Level Modular



Image provided by: BC Housing

702 Nicol Street

\$300,000 per unit
\$30 million for 100 units

Multi-Level Modular



Images provided by NRB Modular Solutions

702 Nicol Street

\$300,000 per unit
\$30 million for 100 units