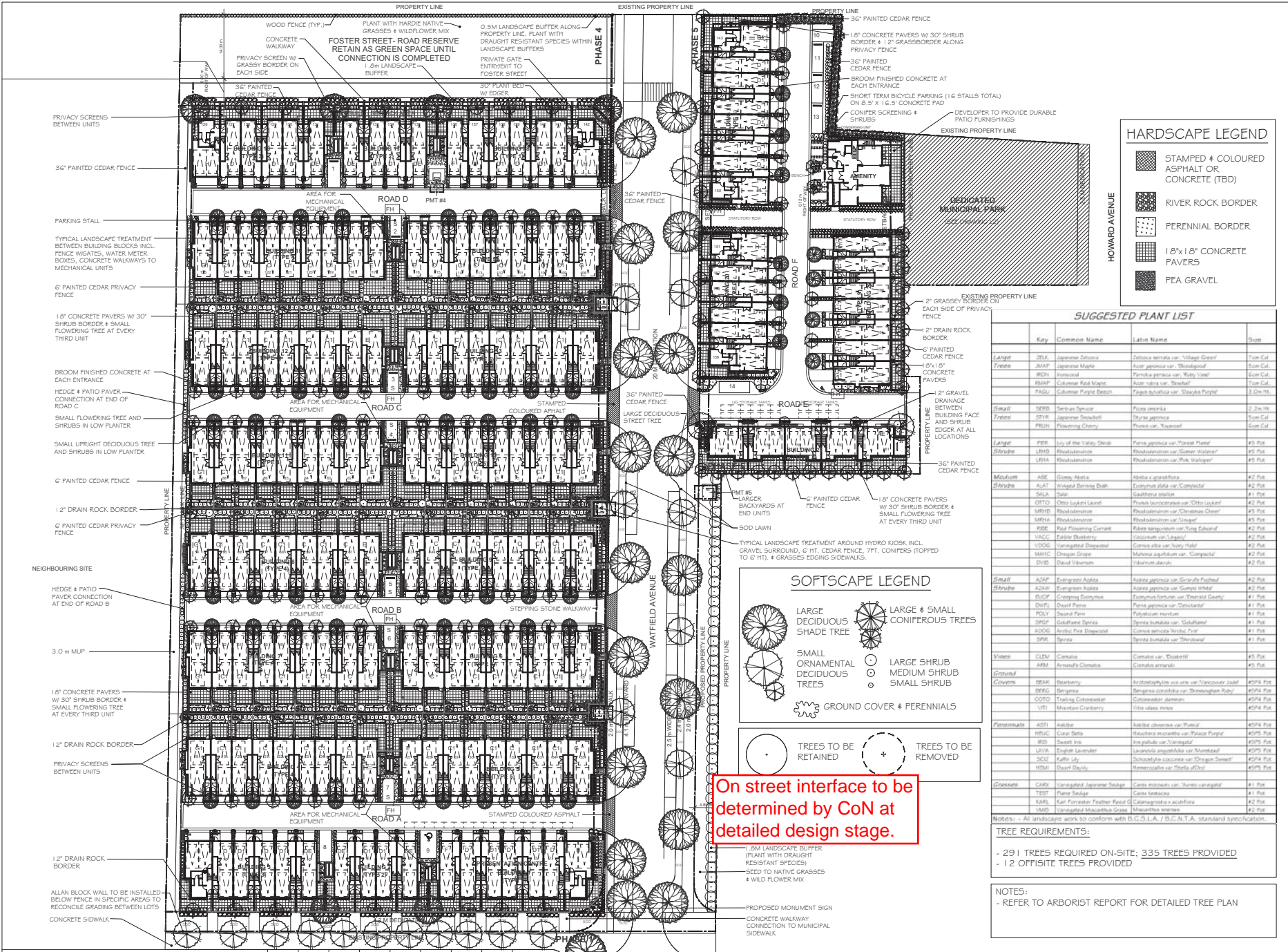


# ATTACHMENT G LANDSCAPE PLAN AND DETAILS



### HARDSCAPE LEGEND

- STAMPED & COLOURED ASPHALT OR CONCRETE (TBD)
- RIVER ROCK BORDER
- PERENNIAL BORDER
- 18"x18" CONCRETE PAVERS
- PEA GRAVEL

### SUGGESTED PLANT LIST

Key	Common Name	Latin Name	Size
Large	WEI Japanese Sycamore	<i>Quercus serrata</i> var. 'Village Green'	7.5m Cal.
Tree	WALF Japanese Maple	<i>Acer japonicum</i> var. 'Bloodgood'	7.5m Cal.
	WCH Ironwood	<i>Parrotia persica</i> var. 'Redy Leaf'	5.0m Cal.
	PMAP Columnar Red Maple	<i>Acer rubra</i> var. 'Redspire'	3.0m Cal.
	PMGU Columnar Paper Birch	<i>Betula papyrifera</i> var. 'Shanley Playfair'	3.0m Cal.
Small	SWB Serbian Spruce	<i>Picea serotina</i>	2.2m Ht.
Tree	STW Japanese Snowbell	<i>Styrax japonica</i>	5.0m Cal.
	FLC Flowering Cherry	<i>Prunus</i> var. 'Kawanishi'	5.0m Cal.
Large	PEE Ley of the Valley Shrub	<i>Photinia japonica</i> var. 'Flame Tree'	#5 Pot.
Shrub	LEHD Rhododendron	<i>Rhododendron</i> var. 'Glen of Malin'	#5 Pot.
	LEHA Rhododendron	<i>Rhododendron</i> var. 'Pink Walpole'	#5 Pot.
Medium	ASE Green Ash	<i>Fraxinus excelsior</i>	#1 Pot.
Shrub	ALAT Winged Burning Bush	<i>Euonymus alata</i> var. 'Compacta'	#2 Pot.
	SALA Saur	<i>Gaultheria phillyifolia</i>	#1 Pot.
	OTFO Otto Luyken Laurel	<i>Prunella lauro-coccinea</i> var. 'Otto Luyken'	#2 Pot.
	MPHB Rhododendron	<i>Rhododendron</i> var. 'Christmas Cheer'	#5 Pot.
	MPHA Rhododendron	<i>Rhododendron</i> var. 'Vasey'	#5 Pot.
	RESE Red Flowering Currant	<i>Ribes sanguineum</i> var. 'Viva Edward'	#3 Pot.
	UNCC Fiddle Leaf Fig	<i>Ficus lyrata</i>	#2 Pot.
	UDOC Variegated Dogwood	<i>Cornus alba</i> var. 'Honey Gold'	#2 Pot.
	MANC Orange Ginkgo	<i>Ginkgo biloba</i> var. 'Compacta'	#2 Pot.
	DVED Dwarf Vireon	<i>Viburnum acerifolium</i>	#2 Pot.
Small	ACAP Burgundy Anemone	<i>Anemone japonica</i> var. 'Grapefruit Fizz'	#2 Pot.
Shrub	ACAP Burgundy Anemone	<i>Anemone japonica</i> var. 'Grapefruit Fizz'	#2 Pot.
	BCOF Corolla Clematis	<i>Clematis florida</i> var. 'Elizabeth Gandy'	#1 Pot.
	DWTF Dwarf Ficus	<i>Ficus japonica</i> var. 'Dwarfstar'	#1 Pot.
	FDLY Deciduous Ficus	<i>Ficus religiosa</i>	#1 Pot.
	SPST Goldflame Spirea	<i>Spiraea japonica</i> var. 'Goldflame'	#1 Pot.
	ADSD Arctic Fire Dogwood	<i>Cornus sericea</i> 'Arctic Fire'	#1 Pot.
	SPP Spirea	<i>Spiraea japonica</i> var. 'Therese'	#1 Pot.
Vines	CLV Clematis	<i>Clematis</i> var. 'Dorothy'	#5 Pot.
	ANM Anemone Clematis	<i>Clematis anemone</i>	#5 Pot.
Ground	BERG Bergenia	<i>Bergenia ciliolata</i> var. 'Wingspan Ruby'	#575 Pot.
	COFF Trailing Columbine	<i>Columbine clematis</i>	#575 Pot.
	UNM Mountain Geranium	<i>Viola alba</i> 'New'	#575 Pot.
Perennials	ASTI Astilbe	<i>Astilbe chinensis</i> var. 'Pinnatifid'	#575 Pot.
	NRUC Coral Bell	<i>Heuchera serrata</i> var. 'Pinnatifid'	#575 Pot.
	WED Wood Anemone	<i>Anemone pulsatilla</i> var. 'Vancouver'	#575 Pot.
	LAVA English Lavender	<i>Lavandula angustifolia</i> var. 'Munstead'	#575 Pot.
	SCIL Ruffin Lily	<i>Schizobolus coccinea</i> var. 'Oregon Sunset'	#575 Pot.
	HMW Dwarf Daylily	<i>Hemerocallis</i> var. 'Starburst II'	#575 Pot.
Grasses	CARD Variegated Japanese Sedge	<i>Carex stricta</i> var. 'Variegata'	#1 Pot.
	TESP Pines Sedge	<i>Carex lasiocarpa</i>	#1 Pot.
	KARL Karl Forester Feather Reed	<i>Calamagrostis a. gracillima</i>	#2 Pot.
	UNM Variegated Miscanthus Grass	<i>Miscanthus sinensis</i>	#2 Pot.

### SOFTSCAPE LEGEND

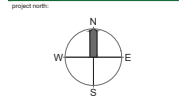
- LARGE DECIDUOUS SHADE TREE
- LARGE & SMALL CONIFEROUS TREES
- SMALL ORNAMENTAL DECIDUOUS TREES
- LARGE SHRUB
- MEDIUM SHRUB
- SMALL SHRUB
- GROUND COVER & PERENNIALS
- TREES TO BE RETAINED
- TREES TO BE REMOVED

On street interface to be determined by CoN at detailed design stage.

Copyright Reserved: These drawings are all in the property of the Landscape Architect. Reproduction in whole or in part without written consent of the Landscape Architect is prohibited.

- NOTES:
- 1) DO NOT SCALE THE DRAWING. WORK TO FIGURED DIMENSIONS ONLY.
  - 2) CONTRACTOR TO VERIFY ALL DIMENSIONS ON SITE. REPORT ANY DISCREPANCIES TO LANDSCAPE ARCHITECT PRIOR TO PROCEEDING WITH THE WORK.
  - 3) THIS DRAWING IS THE PROPERTY OF FOREST LANDSCAPE ARCHITECTURE AND SHALL NOT BE REPRODUCED WITHOUT WRITTEN PERMISSION.

4★ SITE  
LANDSCAPE ARCHITECTURE  
AND SITE PLANNING



Revised / Revisions

No.	Issued / Revisions	Date
7	REVISED LANDSCAPE DP PLAN	04/20/23
6	REVISED LANDSCAPE DP PLAN	03/23/23
5	REVISED LANDSCAPE DP PLAN	02/08/23
4	REVISED LANDSCAPE DP PLAN	01/16/23
3	REVISED LANDSCAPE DP PLAN	09/06/22
2	REVISED LANDSCAPE PLAN	08/26/22
1	ISSUED FOR DP	08/02/22

project title:  
**HAREWOOD TOWNHOMES**  
550 FOURTH STREET & 351 HOWARD AVENUE

drawing title:  
**LANDSCAPE PLAN**

RECEIVED  
DP 1284  
2023-APR-21

project no.: 1  
date: APRIL 20, 2023  
checked by: FORTH  
drawn by: FRANCIS

sheet no.: **L1**