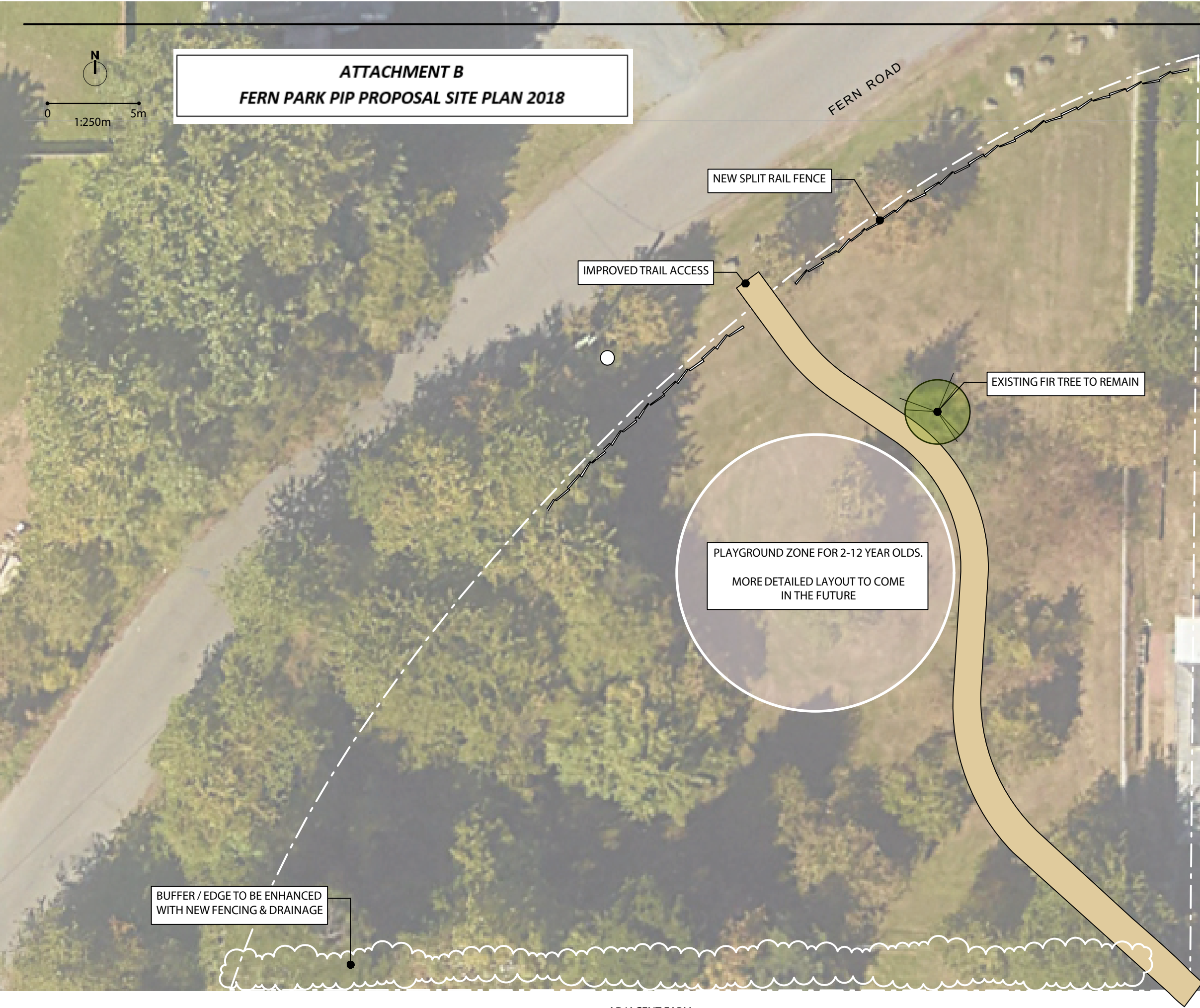


ATTACHMENT B
FERN PARK PIP PROPOSAL SITE PLAN 2018



Fern Park Improvements:

This site plan depicts a neighbourhood vision to increase the recreational use of Fern Park. This is a neighbourhood green space and this site plan has been developed through the City's Partners in Parks (PIP) Program. This improvement plan is neighbourhood initiated and driven. It is a partnership project between neighbours and the City of Nanaimo. If there is community support, this project could begin in 2018/19. It will not directly impact taxes and will not require maintenance by neighbours.

Fern Park was acquired by the City of Nanaimo as a public park in 1988 through subdivision. It is zoned PRC-2 (which allows playgrounds and other active park uses) and is .24 hectares in size.

Improvement ideas generated to date through the PIP process include:

- Phase 1:**
- Installation of a playground for 2-5 year old and 5-12 year olds (including bucket and belt swings, spider-web, monkey bars)
 - Tree removals and replacement with new shade/fruit trees
 - Picnic tables & bench
 - Installation of park entrance sign
- Phase 2:**
- Installation of a split rail fence along Fern Road
 - Consideration of garden plots
 - Consideration of interpretive signage (about agriculture, neighbourhood history, etc).

Other work to be completed includes a solid four-foot solid fence and drainage work between the park and farm.

- Concerns have also been expressed about:
- Traffic speeds on Fern Road (a 30km playground zone will be requested if a playground is installed)
 - Potential impacts on wildlife and the adjacent farm
 - Potential impacts on immediate neighbours (but all neighbours will be encouraged to give their opinions and participate as the vision for the park develops)

