

# ATTACHMENT G LANDSCAPE PLAN AND DETAILS



THIS DRAWING IS NOT FINAL AND SHALL NOT BE USED FOR CONSTRUCTION WORK UNLESS IT HAS BEEN STAMPED AND SIGNED BY THE LANDSCAPE ARCHITECT. THE COPYRIGHT TO ALL DESIGN AND DRAWINGS ARE THE PROPERTY OF MACDONALD GRAY ARCHITECTURE INC. UNLESS OTHERWISE STATED. NO PART OF THIS DRAWING MAY BE REPRODUCED OR TRANSMITTED IN ANY FORM OR BY ANY MEANS WITHOUT THE WRITTEN PERMISSION OF MACDONALD GRAY ARCHITECTURE INC.

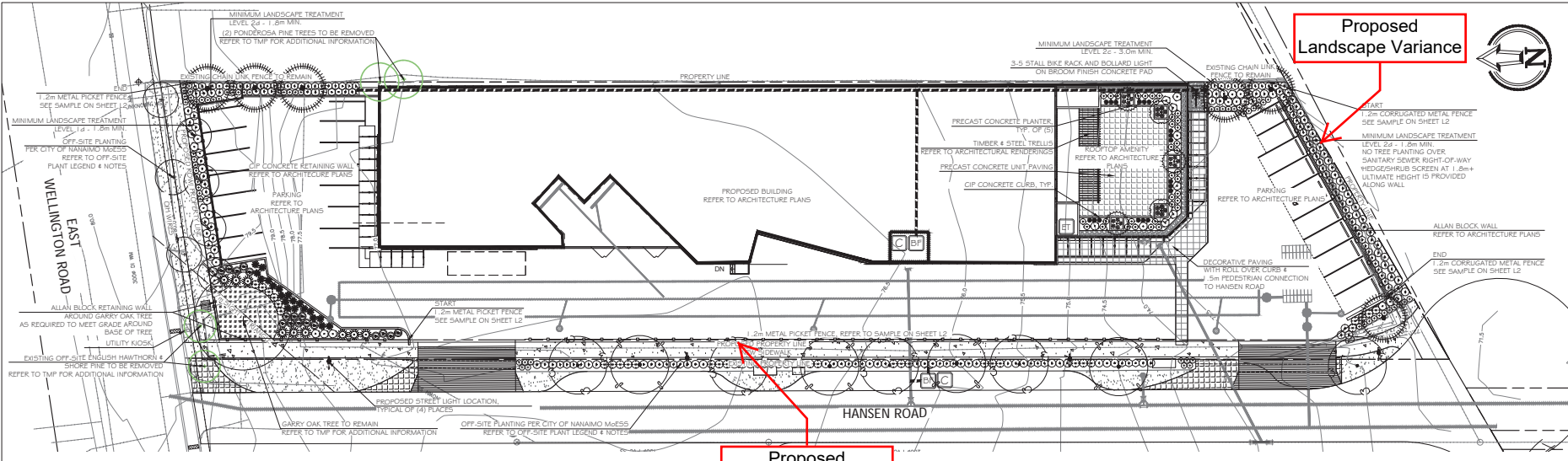
**New Leaves & Fishes Warehouse**  
Nanaimo Loaves & Fishes  
1861 East Wellington Road

**LANDSCAPE ARCHITECTURE PLAN**

Date: March 13, 2023  
 Drawn: CM  
 Checked: CM  
 Scale: 1:250 metric  
 Project Number: 22-0327  
 DRAWING NUMBER: L1 of 2

#	REVISION SCHEDULE	NOTES
0	23JUN2022	DP Coordination
1	20OCT2022	DP Coordination
2	26OCT2022	DP Review
3	10AUG2023	DP Coordination
4	11JAN2023	DAP
5	13MAY2023	Reissued for DP

RECEIVED  
DP1290  
2023-MAR-23



**GENERAL NOTES**

1. THE LANDSCAPING CHARACTER AREA FOR THE SITE IS: WELLINGTON TOWNSITE/ DEPARTURE BAY.
2. REFER TO PLANS PREPARED BY ALVIN REINHARD FRITZ ARCHITECT INC. FOR PROPOSED FINISHED FLOOR ELEVATIONS AND OTHER ARCHITECTURAL INFORMATION.
3. REFER TO CIVIL & STRUCTURAL PLANS AND REPORT PREPARED BY HEROLD ENGINEERS LTD. FOR ALL SITE PLAN LAYOUT, SITE SERVICING, GRADING, SITE DRAINAGE AND STORMWATER MANAGEMENT INFORMATION.
4. REFER TO TREE MANAGEMENT PLAN (TMP) PREPARED BY MUR TREE SERVICE LTD. FOR ALL TREE RETENTION, REMOVALS, REPLACEMENTS AND PROTECTION.

**TREE REPLACEMENT**

1. NUMBER OF TREES TO BE REMOVED: CONIFEROUS 5 DECIDUOUS 6 TOTAL 11	3. TREE REPLACEMENT SUMMARY: ON-SITE CONIFEROUS 5 ON-SITE DECIDUOUS 4 SUBTOTAL 9
2. REQUIRED TREE REPLACEMENT: CONIFEROUS 0 DECIDUOUS 10 TOTAL 10	OFF-SITE CONIFEROUS 1 OFF-SITE DECIDUOUS 12 SUBTOTAL 13  TOTAL ON AND OFF-SITE REPLACEMENT TREES 22

**ON-SITE IRRIGATION EQUIPMENT LEGEND**

SYMBOL	MANUFACTURER	MODEL	DESCRIPTION
[C]	HUNTER	TBD	AUTOMATIC IRRIGATION CONTROLLER IN MECHANICAL ROOM
[IT]	HUNTER	W55-SEN	WIRELESS SOLAR-SYNC SENSOR ON SOUTH-FACING GAZE
[BP]	BY MECHANICAL	BY MECHANICAL	25mm (1") DOUBLE CHECK BACKFLOW PREVENTER IN MECHANICAL ROOM
[---]		SCHEDULE 40	25mm (1") PVC MAINLINE
[-----]		SCHEDULE 40	PVC SLEEVES UNDER ALL PAVING AND THROUGH WALLS MIN. TYPE MAINLINE & LATERALS: 150mm (6") LATERALS & CONTROL WIRE: 150mm (4") BURIAL DEPTH TO MATCH DEPTH OF CARRIED PIPE.

**OFF-SITE IRRIGATION EQUIPMENT LEGEND**

SYMBOL	MANUFACTURER	MODEL	DESCRIPTION
[C]	PER CITY	PER CITY	IRRIGATION CONTROLLER PER CITY OF NANAIMO MESS
[BP]	PER CITY	PER CITY	25mm (1") DOUBLE CHECK BACKFLOW PREVENTER PER CITY OF NANAIMO MESS
[---]		SCHEDULE 40	25mm (1") PVC MAINLINE
[-----]		SCHEDULE 40	PVC SLEEVES UNDER ALL PAVING AND THROUGH WALLS MIN. TYPE MAINLINE & LATERALS: 150mm (6") LATERALS & CONTROL WIRE: 150mm (4") BURIAL DEPTH TO MATCH DEPTH OF CARRIED PIPE.

**ON-SITE PLANT LEGEND**

SYMBOL	BOTANICAL / COMMON NAME	SIZE	SPACING	QTY.	NOTES
<b>TREES</b>					
[Symbol]	CORNUS KRASNA ORIENTAL DOGWOOD	6m CAL.	6m O.C. AVG.	4	DROUGHT TOLERANT
[Symbol]	MAGNOLIA GRANDIFLORA 'KAY FARRIS' KAY FARRIS SOUTHERN MAGNOLIA	#7 POT	SEE PLAN	2	ROOFTOP PLANTER
[Symbol]	PNUS CONTORTA SHORE PINE	2.5m	6m O.C. SEE PLAN	5	NATIVE SPECIES
[Symbol]	STYRAX JAPONICUS 'EVENING LIGHT' JAPANESE SNOWBELL	#15 POT	SEE PLAN	3	ROOFTOP PLANTER
<b>SHRUBS</b>					
[Symbol]	Berberis thunbergii 'AUREA NANA' DWARF GOLDEN BARBERRY	#2 POT	1.0m O.C.	17	DROUGHT TOLERANT
[Symbol]	ESCALLONIA NEWPORT DWARF DWARF ESCALLONIA	#1 POT	0.9m O.C.	34	DROUGHT TOLERANT
[Symbol]	CEANOTHUS THYRSIFLORUS 'VICTORIA' VICTORIA CALIFORNIA LILAC	#2 POT	1.0m O.C.	30	DROUGHT TOLERANT
[Symbol]	JUNIPERUS SQUAMATA 'HOLGER' HOLGER JUNIPER	#2 POT	1.0m O.C.	69	DROUGHT TOLERANT
[Symbol]	MAHONIA AQUIFOLIUM OREGON GRAPE	#2 POT	1.0m O.C.	6	NATIVE SPECIES
[Symbol]	PNUS MUGO VAR. PUMILIO DWARF MOUNTAIN PINE	#2 POT	1.5m O.C.	9	DROUGHT TOLERANT
[Symbol]	POTENTILLA FRUTICOSA 'GOLD FINGER' 'MANGO TANGO' 'PINK BEAUTY' 'YELLOW, YELLOW-ORANGE & PINK SHRUBBY CINQUEFOIL	#2 POT	0.75m O.C.	47	NATIVE CULTIVARS, MIX COLOURS IN GROUPS OF 3 OR 5
[Symbol]	RIBES SANGUINEUM RED FLOWERING CURRANT	1.0m	0.9m O.C.	74	NATIVE SPECIES, HEDGE/SHRUB SCREEN 1.8m+ ULTIMATE HEIGHT
<b>GROUNDCOVER &amp; PERENNIALS</b>					
[Symbol]	HELICTICHON SEMPERVIRENS BLUE OAK GRASS	#2 POT	0.9m O.C.	20	DROUGHT TOLERANT
[Symbol]	MAHONIA NERVOSA CASCADE OREGON GRAPE	#1 POT	0.6m O.C.	80	NATIVE SPECIES UNDER GARRY OAK.
[Symbol]	PENNESSIA ALPEGUROIDES 'LITTLE BUNNY' DWARF FOUNTAIN GRASS	#1 POT	0.6m O.C.	18	DROUGHT TOLERANT
[Symbol]	RUDBECKIA FULLIDA 'GOLDSTURM' BLACK-EYES SUSAN	#1 POT	0.6m O.C.	10	DROUGHT TOLERANT
[Symbol]	SALVIA 'SYLVESTRIS' CARADONIA CARADONIA SAGE	#1 POT	0.6m O.C.	15	DROUGHT TOLERANT

**OFF-SITE PLANT LEGEND**

SYMBOL	BOTANICAL / COMMON NAME	SIZE	SPACING	QTY.	NOTES
<b>TREES</b>					
[Symbol]	ACER RUBRUM 'REDPOINTE' 'REDPOINTE RED MAPLE	5cm CAL	7.5m O.C. SEE PLAN	4	
[Symbol]	CARPINUS CAROLINIANA AMERICAN HORNBREAM	5cm CAL	1.0m O.C. SEE PLAN	3	UNDER OH WIRES
[Symbol]	PNUS CONTORTA SHORE PINE	5cm CAL	SEE PLAN	1	
[Symbol]	QUERCUS RUBRA RED OAK	5cm CAL	7.5m O.C. SEE PLAN	5	
<b>SHRUBS</b>					
[Symbol]	CEANOTHUS THYRSIFLORUS 'VICTORIA' VICTORIA CALIFORNIA LILAC	#2 POT	1.0m O.C.	3	DROUGHT TOLERANT
[Symbol]	JUNIPERUS SQUAMATA 'HOLGER' HOLGER JUNIPER	#2 POT	1.0m O.C.	45	DROUGHT TOLERANT
[Symbol]	MAHONIA AQUIFOLIUM OREGON GRAPE	#2 POT	1.0m O.C.	25	NATIVE SPECIES
[Symbol]	POTENTILLA FRUTICOSA 'GOLD FINGER' 'MANGO TANGO' 'PINK BEAUTY' 'YELLOW, YELLOW-ORANGE & PINK SHRUBBY CINQUEFOIL	#2 POT	0.75m O.C.	21	NATIVE CULTIVARS, MIX COLOURS IN GROUPS OF 3 OR 5
[Symbol]	RIBES SANGUINEUM RED FLOWERING CURRANT	1.0m	0.9m O.C.	21	NATIVE SPECIES
[Symbol]	CANADA NO. 2	SOD		335m2	

**OFF-SITE MINIMUM TREE PLANTING CLEARANCES**

SETBACK TREES FROM:	DISTANCE IN METRES
UNDERGROUND STREET LIGHT CONDUIT OR IRRIGATION MAIN	0.6
OTHER UNDERGROUND UTILITIES	1.2
LAMP STANDARDS	6.0
STEEL AND WOODEN UTILITY POLES	3.0
DRIVEWAYS	2.0
CATCH BASINS	2.0
MANHOLES, VALVE BOXES, SERVICES	1.2
SEWER SERVICE BOXES	1.5
TREE HYDRANTS	2.0
ROAD INTERSECTION	7.0
CURB FACE	1.0
SIDEWALK	0.85
BUILDINGS - FASTIGIATE (COLUMNAR) TREE	2.0
BUILDINGS - REGULAR CROWN TREE	3.0 - 5.0



THIS DRAWING IS NOT FINAL AND SHALL NOT BE USED FOR CONSTRUCTION WORK UNLESS IT HAS BEEN SIGNED AND SEALED BY THE LANDSCAPE ARCHITECT. THE COPYRIGHT TO ALL DESIGN AND DRAWINGS ARE THE PROPERTY OF MACDONALD GRAY CONSULTANTS INC. PERMISSION TO REPRODUCE OR TO MAKE ANY PARTS THEREOF IS GRANTED BY MACDONALD GRAY CONSULTANTS INC. ONLY WITH THE WRITTEN CONSENT OF MACDONALD GRAY CONSULTANTS INC.

**New Loaves & Fishes Warehouse  
Nanaimo Loaves & Fishes  
1861 East Wellington Road**

**ON-SITE IRRIGATION NOTES**

1. THE IRRIGATION SYSTEM SHALL BE DESIGN-BUILD BY THE OWNER.
2. IRRIGATION SYSTEM INSTALLATION SHALL MEET OR EXCEED THE REQUIREMENTS SET OUT IN THE MOST CURRENT VERSION OF THE CANADIAN NURSERY LANDSCAPE ASSOCIATION (CNLA) / CANADIAN SOCIETY OF LANDSCAPE ARCHITECTS (CSLA) CANADIAN LANDSCAPE STANDARD.
3. ALL PROPOSED ON-SITE PLANTING AND LAWN AREAS SHALL BE WATERED VIA AN UNDERGROUND, AUTOMATIC IRRIGATION SYSTEM UTILIZING A "SMART" (ET/ WEATHER-BASED) IRRIGATION CONTROLLER.
4. IRRIGATION EMISSION DEVICES SHALL BE LOW VOLUME ROTARY NOZZLES OR MICRO/ DRIP EQUIPMENT.
5. THE CONTRACTOR SHALL ADJUST THE PLACEMENT AND RADIUS OF SPRINKLERS AS REQUIRED BY FIELD CONDITIONS TO ACHIEVE FULL COVERAGE OF ALL PLANTED AREAS AND TO MINIMIZE OVER-SPRAY ONTO ADJACENT HARD SURFACES, FENCES AND PROPERTY LINES.
6. ALL PIPING UNDER PAVING SHALL BE INSTALLED IN SEPARATE SCHEDULE 40 SLEEVES AT A MINIMUM DEPTH OF 600mm WITH 150mm OF SAND BACKFILL ABOVE AND BELOW PIPE. ALL WIRING UNDER PAVING SHALL BE INSTALLED IN SEPARATE SCHEDULE 40 PVC CONDUIT. ALL SLEEVES AND CONDUIT SHALL BE INSTALLED PRIOR TO PAVEMENT INSTALLATION AND SHALL EXTEND 150mm BEYOND EDGE OF PAVEMENT OR CURB. BACKFILL FOR SLEEVES SHALL BE COMPACTED TO THE SPECIFIED DENSITY FOR THE SUBGRADE.
7. OPERATE IRRIGATION CONTROLLER WITHIN THE CITY OF NANAIMO WATER RESTRICTION SCHEDULE.

**OFF-SITE IRRIGATION NOTES**

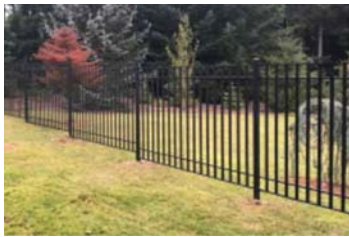
1. THE OFF-SITE IRRIGATION SYSTEM SHALL BE INSTALLED, MAINTAINED AND WATERED PER SECTION 1.4 - LANDSCAPE OF THE CITY OF NANAIMO ENGINEERING STANDARDS & SPECIFICATIONS (M&ESS) LATEST EDITION AND STANDARD DETAILS 1-1 TO 1-11 AVAILABLE ON THE CITY OF NANAIMO WEBSITE. <https://www.nanaimo.ca/docx/donng-businessengineering-standards/1-G-20/1-G-moess-sec-1-4-0.pdf>

**PLANTING NOTES**

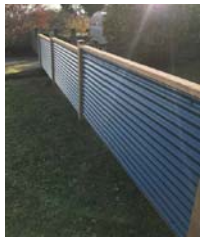
1. ALL LANDSCAPE INSTALLATION AND MAINTENANCE SHALL MEET OR EXCEED THE MOST RECENT STANDARDS SET OUT BY THE CANADIAN NURSERY LANDSCAPE ASSOCIATION (CNLA) / CANADIAN SOCIETY OF LANDSCAPE ARCHITECTS (CSLA) CANADIAN LANDSCAPE STANDARD.
2. GROWING MEDIUM SHALL MEET OR EXCEED THE PROPERTIES OUTLINED THE CANADIAN LANDSCAPE STANDARD PER SECTION 6 GROWING MEDIUM, TABLE T-6.3.5.2. PROPERTIES FOR GROWING MEDIA:  
LEVEL 2 "GROOVED" - 2P  
GROWING MEDIUM DEPTHS: SHRUBS - 450mm  
TREES - 600mm BELOW AND AROUND ROOTBALL
3. MULCH SHALL BE COMPOST PER SECTION 1.0 MULCHING OF THE CANADIAN LANDSCAPE STANDARD. MULCH DEPTH SHALL BE 75mm MINIMUM OVER ALL TREE, SHRUB AND GROUNDCOVER PLANTING AREAS.
4. PLANT MATERIAL QUALITY, TRANSPORT AND HANDLING SHALL COMPLY WITH CNLA STANDARDS FOR NURSERY STOCK.
5. ALL TREE, SHRUB, GROUNDCOVER AND LAWN AREAS SHALL BE WATERED VIA AN UNDERGROUND AUTOMATIC IRRIGATION SYSTEM UTILIZING "SMART" (ET/ WEATHER-BASED) IRRIGATION CONTROLLER. IRRIGATION EMISSION DEVICES SHALL BE HIGH EFFICIENCY LOW VOLUME ROTARY NOZZLES OR DRIP IRRIGATION EQUIPMENT.
6. PLANT QUANTITIES ARE FOR INFORMATION ONLY. IN CASE OF ANY DISCREPANCY THE PLAN SHALL GOVERN.
7. ALL PLANT MATERIAL SHALL MATCH TYPE AND SPECIES AS INDICATED ON THE PLANTING LEGEND. CONTACT THE LANDSCAPE ARCHITECT FOR APPROVAL OF ANY SUBSTITUTIONS. NO SUBSTITUTIONS WILL BE ACCEPTED WITHOUT PRIOR WRITTEN APPROVAL OF THE LANDSCAPE ARCHITECT.
8. CHECK FOR LOCATIONS OF WATER LINES AND OTHER UNDERGROUND SERVICES PRIOR TO DIGGING TREE PITS. EXCAVATED PLANT PITS SHALL HAVE POSITIVE DRAINAGE. PLANT PITS WHEN FULLY FLOODED WITH WATER SHALL DRAIN WITHIN ONE HOUR AFTER FILLING.
9. NO PLANTS REQUIRING PRUNING OF MAJOR BRANCHES DUE TO DISEASE, DAMAGE OR POOR FORM WILL BE ACCEPTED.

**OFF-SITE PLANTING NOTES**

1. ALL OFF-SITE TREES, SHRUBS AND SOD SHALL BE INSTALLED, MAINTAINED AND WATERED PER SECTION 1.4 - LANDSCAPE OF THE CITY OF NANAIMO ENGINEERING STANDARDS & SPECIFICATIONS (M&ESS) LATEST EDITION AND STANDARD DETAILS F-1, F-2 & F-3 AVAILABLE ON THE CITY OF NANAIMO WEBSITE. <https://www.nanaimo.ca/docx/donng-businessengineering-standards/1-G-20/1-G-moess-sec-1-4-0.pdf>
2. ALL OFF-SITE PLANTING INSPECTIONS AND APPROVALS SHALL BE PERFORMED BY THE CITY ENGINEER. NO TREE PLANTING SHALL BEGIN UNTIL THE TREE LOCATIONS HAVE BEEN STAKED ON SITE AND INSPECTED WITH CITY OF NANAIMO STAFF TO CONFIRM TREE PLANTING CLEARANCES ARE BEING MET. UNTIL THE TREES TO BE PLANTED HAVE BEEN INSPECTED BY CITY OF NANAIMO STAFF, AND UNTIL THE CITY OF NANAIMO HAS AUTHORIZED TREE PLANTING TO PROCEED IN WRITING. ALL COMMUNICATIONS WITH RESPECT TO TREE PLANTING AND BOULEVARD LANDSCAPING ARE TO BE ROUTED THROUGH THE CONSULTANT TEAM, AND NOT DIRECTLY TO THE CITY OF NANAIMO.
3. ALL TREE & SHRUB PLANTING AND SODDING SHALL MEET OR EXCEED THE M&ESS AND THE MOST RECENT STANDARDS SET OUT BY THE CANADIAN NURSERY LANDSCAPE ASSOCIATION (CNLA) / CANADIAN SOCIETY OF LANDSCAPE ARCHITECTS (CSLA) CANADIAN LANDSCAPE STANDARD.
4. GROWING MEDIUM AND SOIL SAMPLES AND TESTING SHALL BE PER THE M&ESS SECTION 1.4.1.4 & 1.4.1.7A. GROWING MEDIUM PROPERTIES SHALL MEET THE PROPERTIES FOR LEVEL 2 "GROOVED" AND LEVEL 3 "MODERATE" AREAS FOR: 1.L - LOW TRAFFIC LAWN AREAS AND TREES  
SOIL DEPTHS:  
SOD AREAS: 150mm MIN.  
SHRUB AREAS: 450mm (1 1/2')  
AT EACH TREE: 1000mm DEEP X 900mm WIDE MIN.  
STRUCTURAL SOIL: 600mm / 6m<sup>2</sup> PER TREE MIN.
5. STRUCTURAL SOIL UNDER THE SIDEWALK SHALL BE COMPOSED OF THE APPROVED GROWING MEDIUM AND CLEAR CRUSH GRANULAR COMPONENTS IN ACCORDANCE WITH THE FOLLOWING RECOMMENDED BASE RATIO OF MATERIALS:  
SOIL COMPONENT PROPORTION BY WEIGHT  
GROWING MEDIUM: 15% TO 20% DRY WEIGHT  
CLEAR CRUSH: 25mm TO 75mm CLEAR CRUSH 80% TO 85% DRY WEIGHT  
INSTALL GEOTEXTILE FILTER CLOTH BETWEEN THE STRUCTURAL SOIL AND SIDEWALK BASE MATERIAL. REFER TO CIVIL PLANS FOR LIMIT OF STRUCTURAL SOIL.
6. PLANT MATERIAL QUALITY, TRANSPORT AND HANDLING SHALL COMPLY WITH CNLA/CSLA STANDARDS FOR NURSERY STOCK AND THE M&ESS.
7. SOD MATERIAL QUALITY, TRANSPORT AND HANDLING SHALL COMPLY WITH THE M&ESS.
8. PLANT QUANTITIES ARE FOR INFORMATION ONLY. IN CASE OF ANY DISCREPANCY THE PLAN SHALL GOVERN.
9. ALL PLANT MATERIAL SHALL MATCH SPECIES AS INDICATED ON THE PLANTING LEGEND. SUBSTITUTIONS SHALL NOT BE ACCEPTED WITHOUT WRITTEN CITY OF NANAIMO APPROVAL.
10. CHECK FOR LOCATIONS OF WATER LINES AND OTHER UNDERGROUND SERVICES PRIOR TO DIGGING TREE PITS. EXCAVATED PLANT PITS SHALL HAVE POSITIVE DRAINAGE. PLANT PITS WHEN FULLY FLOODED WITH WATER SHALL DRAIN WITHIN ONE HOUR AFTER FILLING.
11. NO PLANTS REQUIRING PRUNING OF MAJOR BRANCHES DUE TO DISEASE, DAMAGE OR POOR FORM WILL BE ACCEPTED.



1.2m Metal Picket Fence  
Photo Courtesy of: <http://www.westcoastgates.ca>



1.2m Corrugated Metal Fence  
Photo Courtesy of: <https://simple-fencing.com/metal-fences>

PRODUCTS	QUANTITY	WEIGHT	PRICE
Quantity	2 Pk 4	1 Pk 2	4 Pk 8
Weight (kg)	367	367	367
Weight (lbs)	812	812	812
Weight (tonnes)	0.367	0.367	0.367
Weight (cubic m)	0.367	0.367	0.367
Weight (cubic ft)	13.1	13.1	13.1
Weight (cubic yd)	0.44	0.44	0.44
Weight (cubic ft)	0.44	0.44	0.44

Bike Rack  
Courtesy of: <http://www.coracanada.ca>

**NOTES & SAMPLES**

Date:	March 13, 2023
Drawn:	CM
Checked:	CM
Scale:	N/A
Project Number:	22-0327
DRAWING NUMBER:	L2 of 2

**REVISION SCHEDULE**

#	Date	NOTES
0	23JUN2022	DP Coordination
1	20OCT2022	DP Coordination
2	26OCT2022	DP Review
3	10JAN2023	DP Coordination
4	11JAN2023	DAP
5	13MAR2023	Reissued for DP

RECEIVED  
DP1290  
2023-MAR-23