

ATTACHMENT 'A' HAREWOOD ARTIFICIAL TURF FIELD KEY PLAN LAYOUT

BENCHMARK:
MONUMENT 77#5270 LOCATED AT INTERSECTION
OF HOWARD AVE AND SEVENTH ST.
ELEV. 40.872m

CLIENT
CITY OF NANAIMO

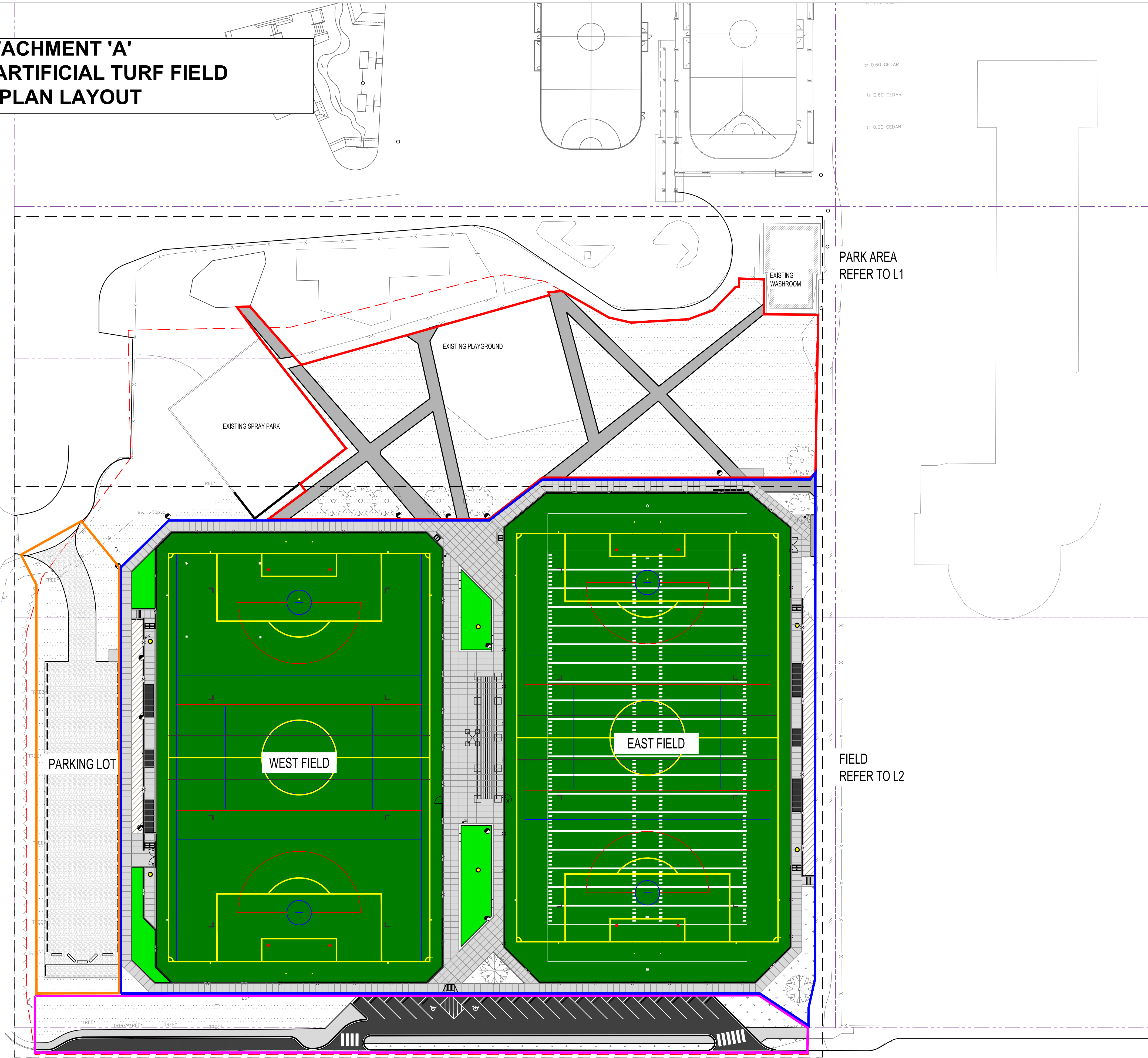
455 WALLACE STREET,
NANAIMO, BC, V9R 5J6

PROJECT
**HAREWOOD PARK
ARTIFICIAL TURF
FIELDS**

ROOKESIDE PL

PARKVIEW DR

HOWARD AVENUE



LAYOUT AND MATERIALS	
ITEM	DESCRIPTION
- - -	PROPERTY
- x -	FENCE
- - -	RETAINING WALL
■	SYNTHETIC TURF
■	SYNTHETIC TURF - PASSIVE
■	ASPHALT
■	CONCRETE PAVEMENT
■	GRAVEL
●	SPORTS FIELD LIGHTING

COLOUR CODE	
ITEM	DESCRIPTION
■	BASE WORK: SYNTHETIC FIELDS
■	OPTIONAL WORK: PARK AREA NORTH OF FIELDS
■	OPTIONAL WORK: HOWARD AVE PARKING LOT
■	OPTIONAL WORK: SEVENTH ST PARKING LOT

NOTE: REFER TO SPECIFIC DRAWINGS FOR EXACT LIMITS OF BASIC AND PROVISIONAL/OPTIONAL WORK ITEMS

No.	DESCRIPTION	DATE	BY
C	ISSUED FOR TENDER	2023/01/27	RB/KL
B	95% DESIGN REVIEW	2022/12/23	RB/KL
A	50% DESIGN REVIEW	2022/10/31	RB/EK

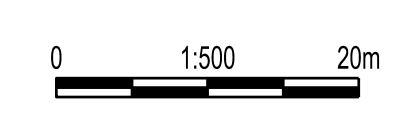
DESTROY ALL PRINTS BEARING PREVIOUS No. This drawing must not be reproduced without the written permission of R.F. Binnie & Associates Ltd. This drawing is not to be used for construction unless it is stamped "ISSUED FOR CONSTRUCTION" and signed by R.F. Binnie & Associates Ltd. It is the contractor's responsibility to ensure that they are in possession of the latest revision of this drawing.

Rev / C

DESIGN CREW SEAL
surveyed by
drawn by EK
designed by MH
checked by BA

BINNIE
Landscape Architects, Sports Facility Designers
R.F. BINNIE & ASSOCIATES LTD.
300 - 4940 Canada Way,
Burnaby, BC V5C 4K6
TEL 604 420 1721
BINNIE.com

DRAWING TITLE
**LAYOUT &
MATERIALS - KEY
PLAN**



project no. 22-0366
date 2023-01-27
scale 1:500

L1 / 35

ISSUED FOR TENDER

LAYOUT AND MATERIALS	
ITEM	DESCRIPTION
	PROPERTY
	FENCE
	RETAINING WALL
	SYNTHETIC TURF
	SYNTHETIC TURF - PASSIVE
	ASPHALT
	CONCRETE PAVEMENT
	GRAVEL
	SPORTS FIELD LIGHTING

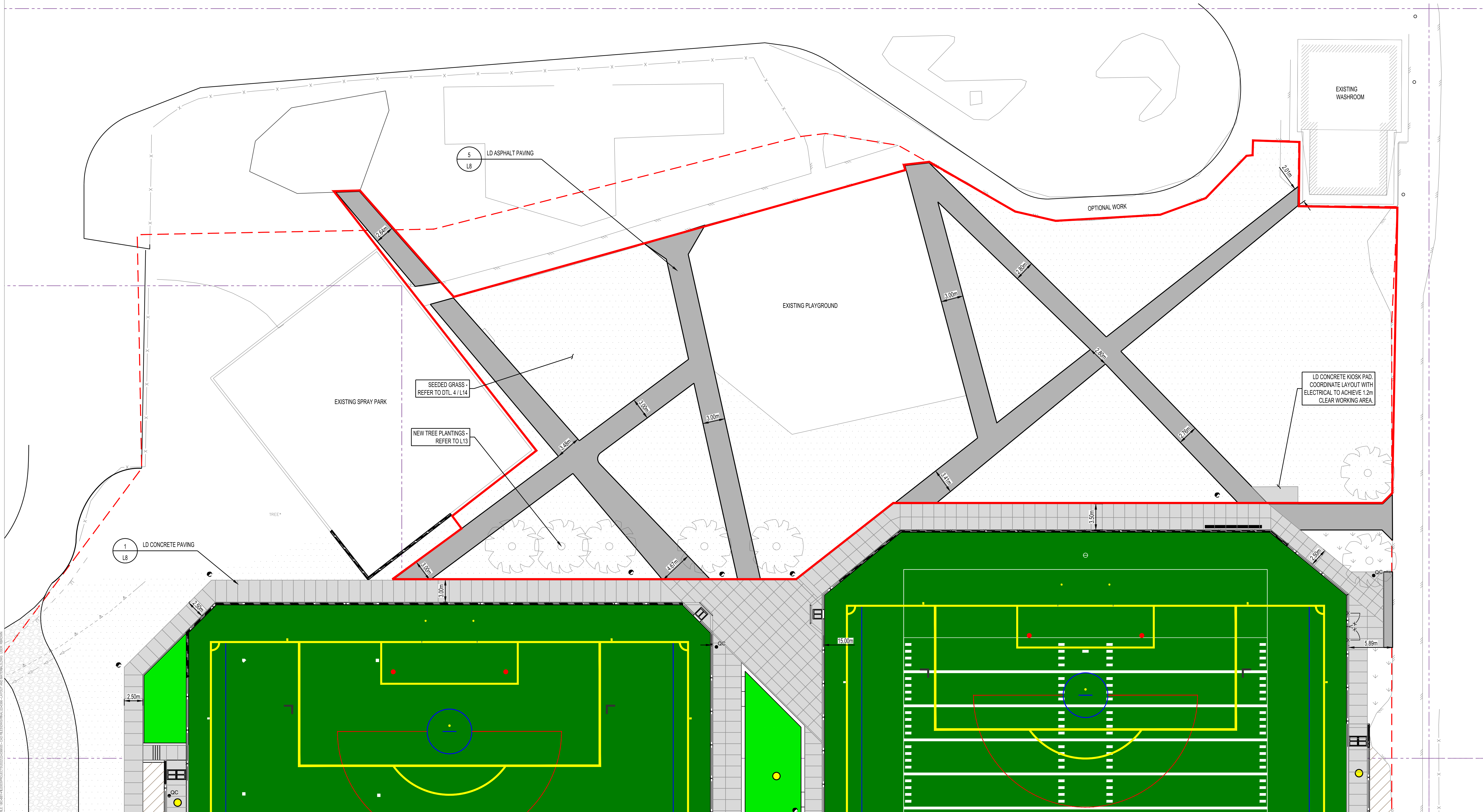
BENCHMARK:
MONUMENT 77#5270 LOCATED AT INTERSECTION
OF HOWARD AVE AND SEVENTH ST.

ELEV. 40.872m

CLIENT
CITY OF NANAIMO

455 WALLACE STREET,
NANAIMO, BC, V9R 5J6

PROJECT
**HAREWOOD PARK
ARTIFICIAL TURF
FIELDS**



No.	DESCRIPTION	DATE	BY
C	ISSUED FOR TENDER	2023/01/27	RB/KL
B	95% DESIGN REVIEW	2022/12/23	RB/KL
A	50% DESIGN REVIEW	2022/10/31	RB/EK

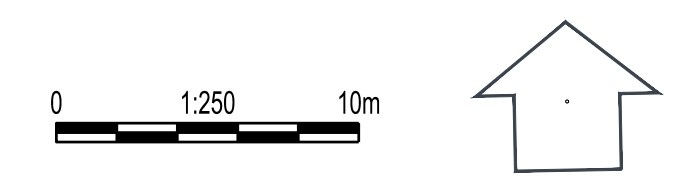
DESTROY ALL PRINTS BEARING PREVIOUS No.
This drawing is not to be used for construction unless it is stamped "ISSUED FOR CONSTRUCTION" and signed by R.F. Binnie & Associates Ltd. It is the contractor's responsibility to ensure that they are in possession of the latest revision of this drawing.

REV / C

DESIGN CREW SEAL
surveyed by
drawn by EK
designed by MH
checked by BA

BINNIE
Landscape Architects, Sports Facility Designers
R.F. BINNIE & ASSOCIATES LTD.
300 - 4940 Canada Way,
Burnaby, BC V5C 4K6
TEL 604 420 1721
BINNIE.com

DRAWING TITLE
**LAYOUT &
MATERIALS PLAN -
PARK**

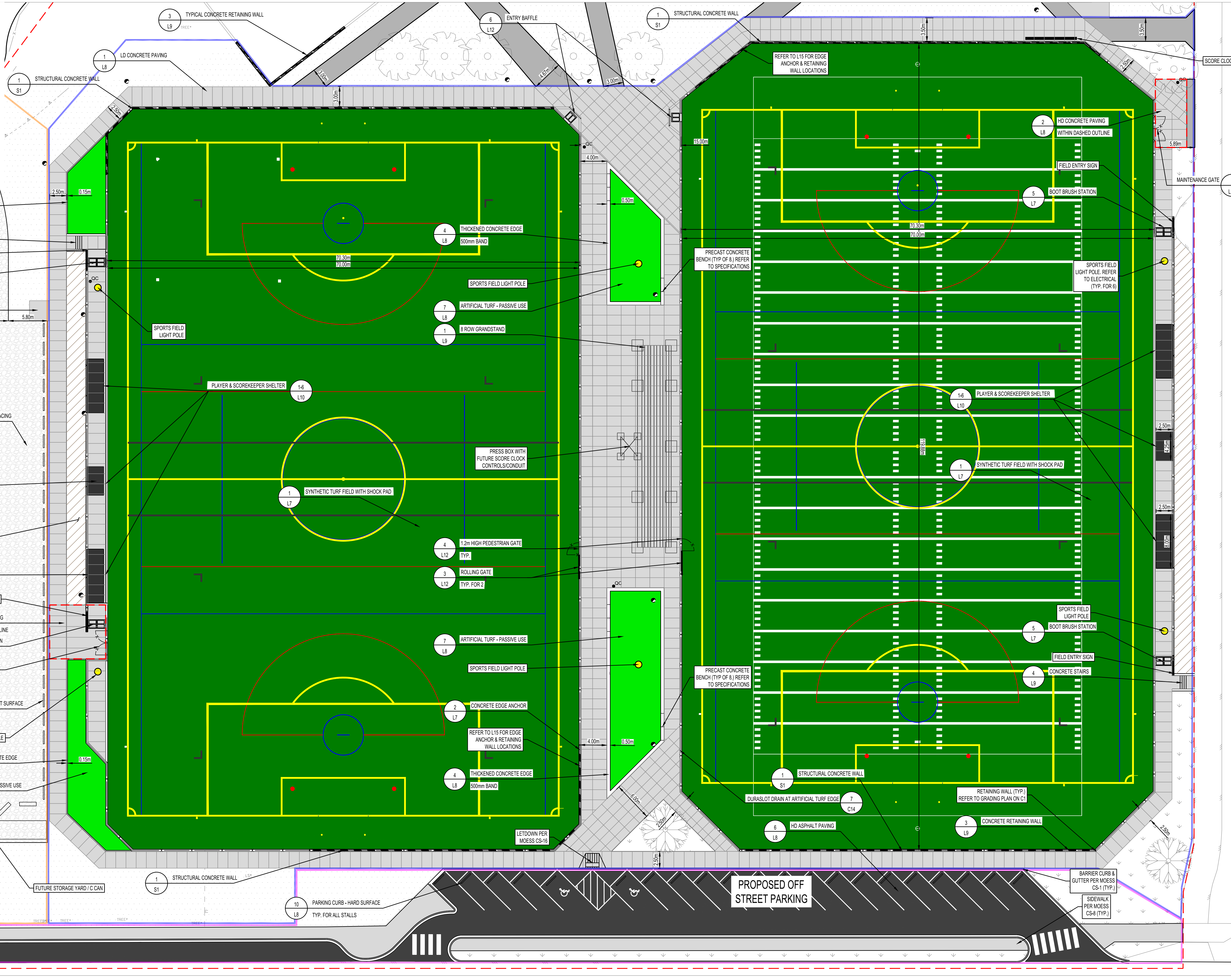


project no. 22-0366
date 2023-01-27
scale 1:250
L2 / 35
ISSUED FOR TENDER

LAYOUT AND MATERIALS	
ITEM	DESCRIPTION
---	PROPERTY
-x-	FENCE
---	RETAINING WALL
■	SYNTHETIC TURF
■	SYNTHETIC TURF - PASSIVE
■	ASPHALT
■	CONCRETE PAVEMENT
■	GRAVEL
●	SPORTS FIELD LIGHTING

- 4 THICKENED CONCRETE EDGE 150mm BAND
- 4 CONCRETE STAIRS
- 5 FIELD ENTRY SIGN
- 5 BOOT BRUSH STATION
- 6 DRINKING FOUNTAIN
- 9 GRANULAR SURFACING
- SCOREKEEPERS SHELTER (TYP. FOR BOTH FIELDS)
- REFER TO L13 FOR PLANTINGS
- 1 PLAYERS SHELTER TYP. FOR 4
- 2 HD CONCRETE PAVING WITHIN DASHED OUTLINE
- 5 BOOT BRUSH STATION
- 5 MAINTENANCE GATE
- 9 PARKING CURB - SOFT SURFACE TYP. FOR ALL STALLS
- SPORTS FIELD LIGHT POLE
- 4 THICKENED CONCRETE EDGE 150mm BAND
- 7 ARTIFICIAL TURF - PASSIVE USE
- 1 STRUCTURAL CONCRETE WALL
- 10 PARKING CURB - HARD SURFACE TYP. FOR ALL STALLS

- 3 TYPICAL CONCRETE RETAINING WALL
- 6 ENTRY BAFFLE
- 1 STRUCTURAL CONCRETE WALL
- 1 LD CONCRETE PAVING
- 4 THICKENED CONCRETE EDGE 500mm BAND
- SPORTS FIELD LIGHT POLE
- 7 ARTIFICIAL TURF - PASSIVE USE
- 8 ROW GRANDSTAND
- 1-6 PLAYER & SCOREKEEPER SHELTER
- 1 SYNTHETIC TURF FIELD WITH SHOCK PAD
- 4 1.2m HIGH PEDESTRIAN GATE TYP.
- 3 ROLLING GATE TYP. FOR 2
- 7 ARTIFICIAL TURF - PASSIVE USE
- SPORTS FIELD LIGHT POLE
- 2 CONCRETE EDGE ANCHOR
- REFER TO L15 FOR EDGE ANCHOR & RETAINING WALL LOCATIONS
- 4 THICKENED CONCRETE EDGE 500mm BAND
- LETDOWN PER MOESS CS-16
- 1 STRUCTURAL CONCRETE WALL
- 6 HD ASPHALT PAVING
- 3 CONCRETE RETAINING WALL
- BARRIER CURB & GUTTER PER MOESS CS-1 (TYP.)
- SIDEWALK PER MOESS CS-8 (TYP.)



CLIENT
CITY OF NANAIMO
455 WALLACE STREET,
NANAIMO, BC, V9R 5J6

PROJECT
**HAREWOOD PARK
ARTIFICIAL TURF
FIELDS**

No.	DESCRIPTION	DATE	BY
C	ISSUED FOR TENDER	2023/01/27	RB/KL
B	95% DESIGN REVIEW	2022/12/23	RB/KL
A	50% DESIGN REVIEW	2022/10/31	RB/EK

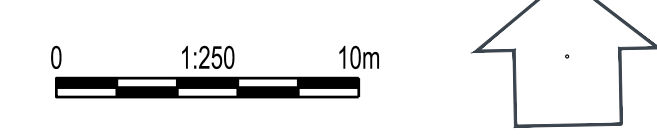
DESTROY ALL PRINTS BEARING PREVIOUS No. This drawing must not be reproduced without the written permission of R.F. Binnie & Associates Ltd. This drawing is not to be used for construction unless it is stamped "ISSUED FOR CONSTRUCTION" and signed by R.F. Binnie & Associates Ltd. It is the contractor's responsibility to ensure that they are in possession of the latest revision of this drawing.

REV / C

DESIGN CREW
SEAL
surveyed by
drawn by EK
designed by MH
checked by BA

BINNIE
Landscape Architects, Sports Facility Designers
R.F. BINNIE & ASSOCIATES LTD.
300 - 4940 Canada Way,
Burnaby, BC V5G 4K6
TEL 604 420 1721
BINNIE.com

DRAWING TITLE
**LAYOUT &
MATERIALS PLAN -
FIELD**



project no. 22-0366
date 2023-01-27
scale 1:250
L3 / 35
ISSUED FOR TENDER