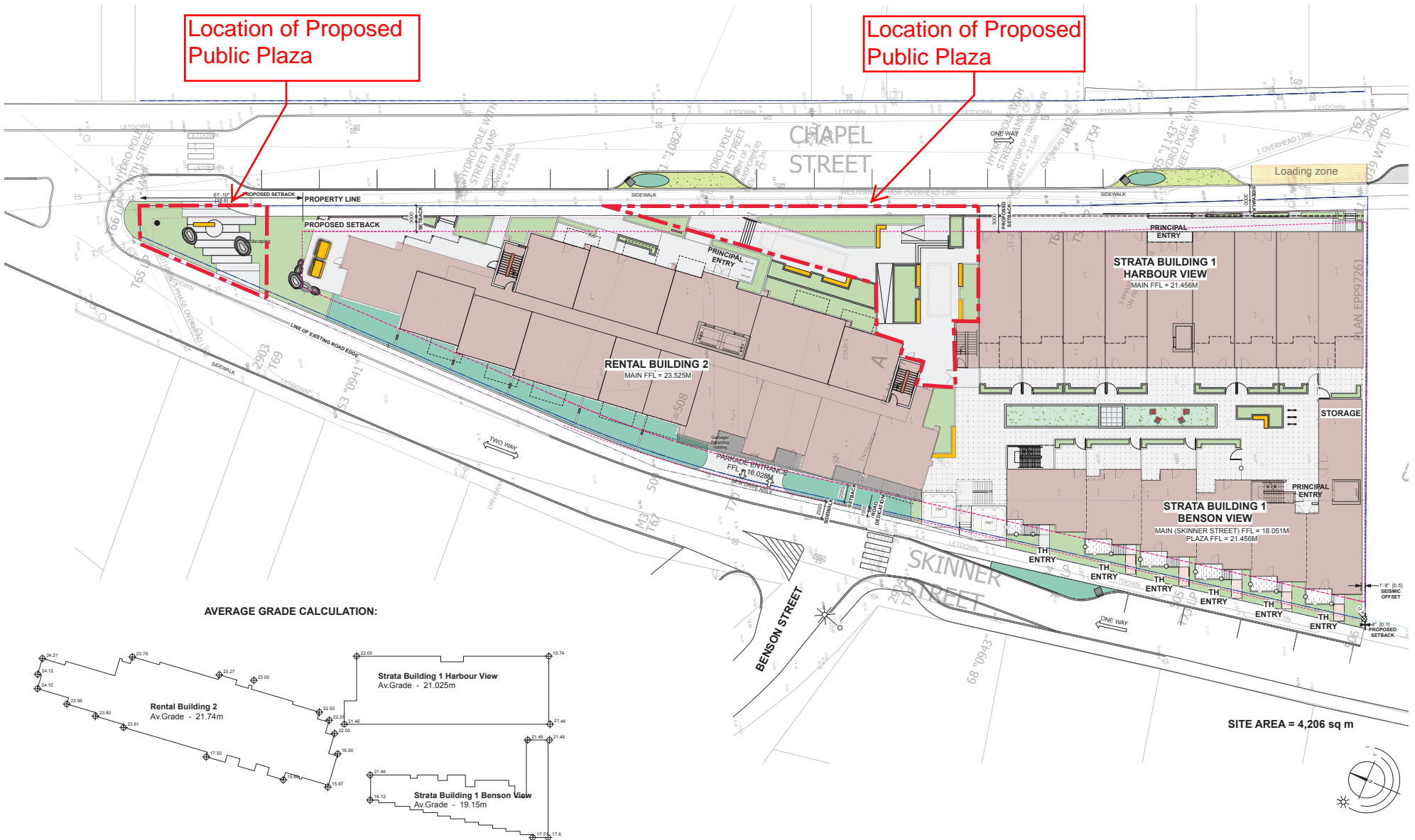
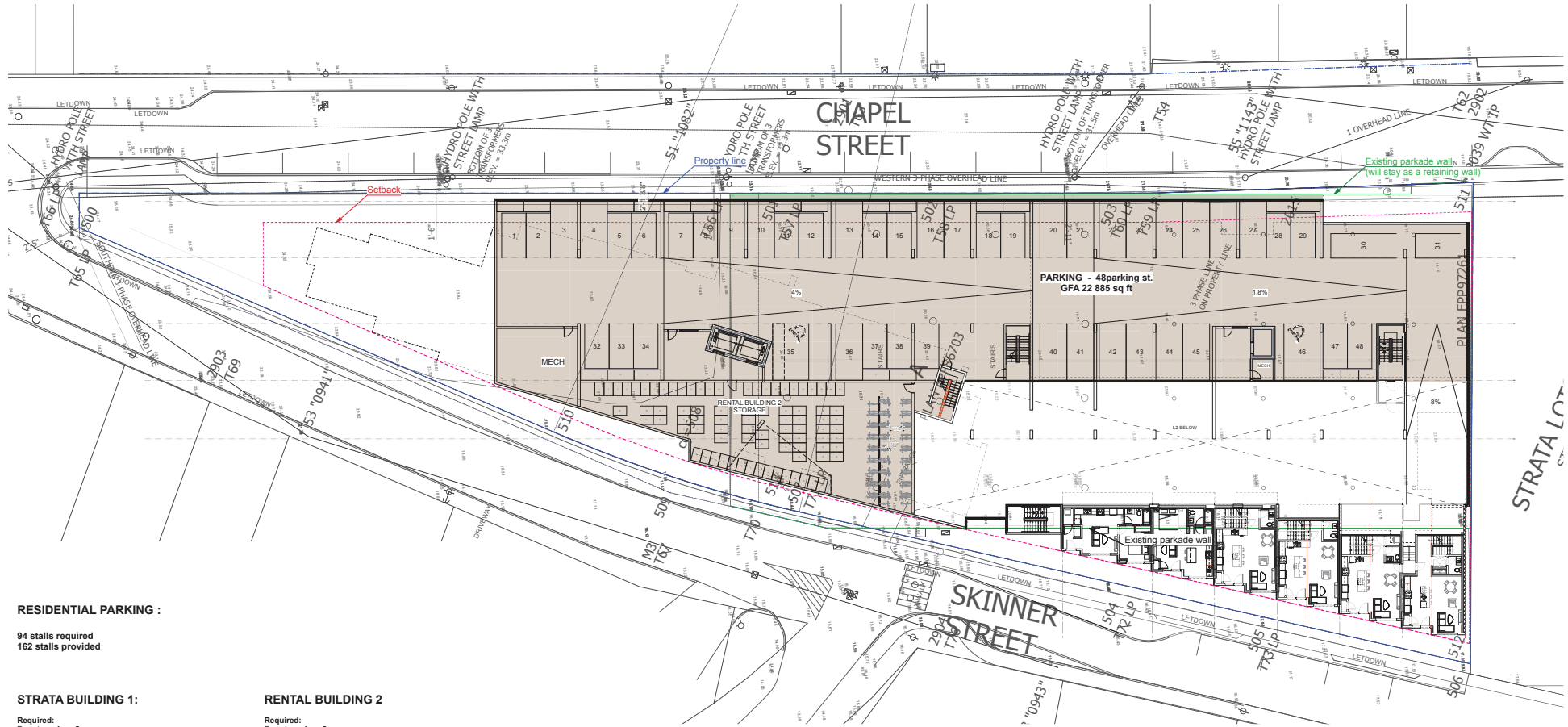


# ATTACHMENT C SITE AND PARKING PLAN

Location of Proposed  
Public Plaza

Location of Proposed  
Public Plaza





#### RESIDENTIAL PARKING :

94 stalls required  
162 stalls provided

#### STRATA BUILDING 1:

Required:  
Downtown Area 5:  
1BDM 51x0.5 = 25.5  
2BDM 20x0.9 = 18.0  
Studio 2x0.45 = 0.9

**TOTAL (required) 44.4 STALLS**  
including:  
Accessible parking - 3 stalls  
Visitor parking - 2 stalls  
Electric vehicle 25% - 11 stalls

**Bicycle parking:**  
Short term - 7 (73units x 0.1space)  
Long term - 36.5 (73units x 0.5space)

#### RENTAL BUILDING 2

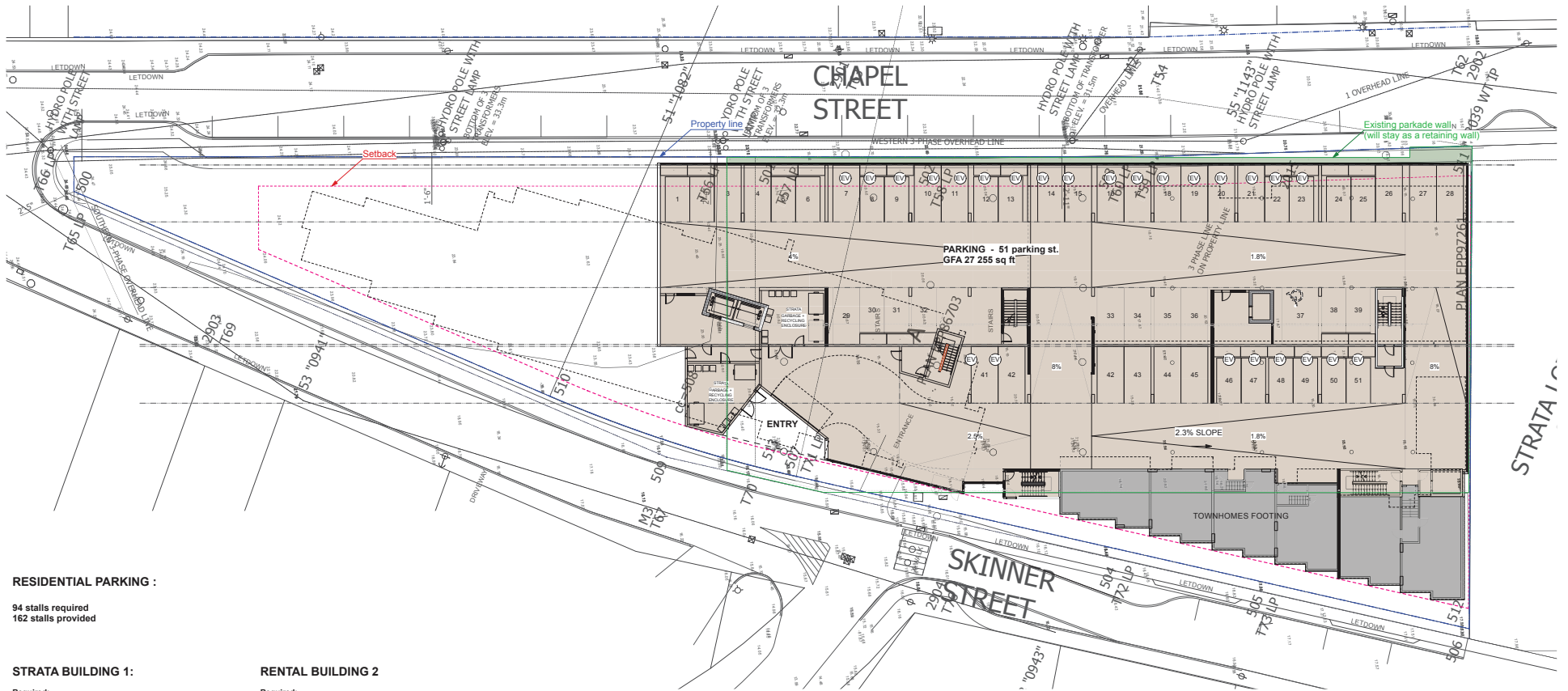
Required:  
Downtown Area 5:  
1BDM 51x0.5 = 25.5  
2BDM 21x0.9 = 18.9  
STUDIO 12x0.45 = 5.4

**TOTAL (required) 50 STALLS**  
including:  
Accessible parking - 3 stalls  
Visitor parking - 2 stalls  
Electric vehicle 25% - 13 stalls

**Bicycle parking:**  
Short term - 8 (84units x 0.1space)  
Long term - 42 (84units x 0.5space)



RECEIVED  
DP1256  
2023-MAR-16  
C:\2023\77 CHAPEL ST\77 CHAPEL ST.Plan L1

**RESIDENTIAL PARKING :**

94 stalls required  
162 stalls provided

**STRATA BUILDING 1:**

Required:  
Downtown Area 5:  
1BDM 51x0.5 = 25.5  
2BDM 21x0.9 = 18.9  
Studio 2x0.45 = 0.9

**TOTAL (required) 44.4 STALLS**  
including:  
Accessible parking - 3 stalls  
Visitor parking - 2 stalls  
Electric vehicle 25% - 11 stalls

**Bicycle parking:**  
Short term - 7 (73units x 0.1space)  
Long term - 36.5 (73units x 0.5space)

**RENTAL BUILDING 2**

Required:  
Downtown Area 5:  
1BDM 51x0.5 = 25.5  
2BDM 21x0.9 = 18.9  
Studio 12x0.45 = 5.4

**TOTAL (required) 50 STALLS**  
including:  
Accessible parking - 3 stalls  
Visitor parking - 2 stalls  
Electric vehicle 25% - 13 stalls

**Bicycle parking:**  
Short term - 8 (84units x 0.1space)  
Long term - 42 (84units x 0.5space)



RECEIVED  
DP1256  
2023-MAR-16  
CITY OF NANAIMO

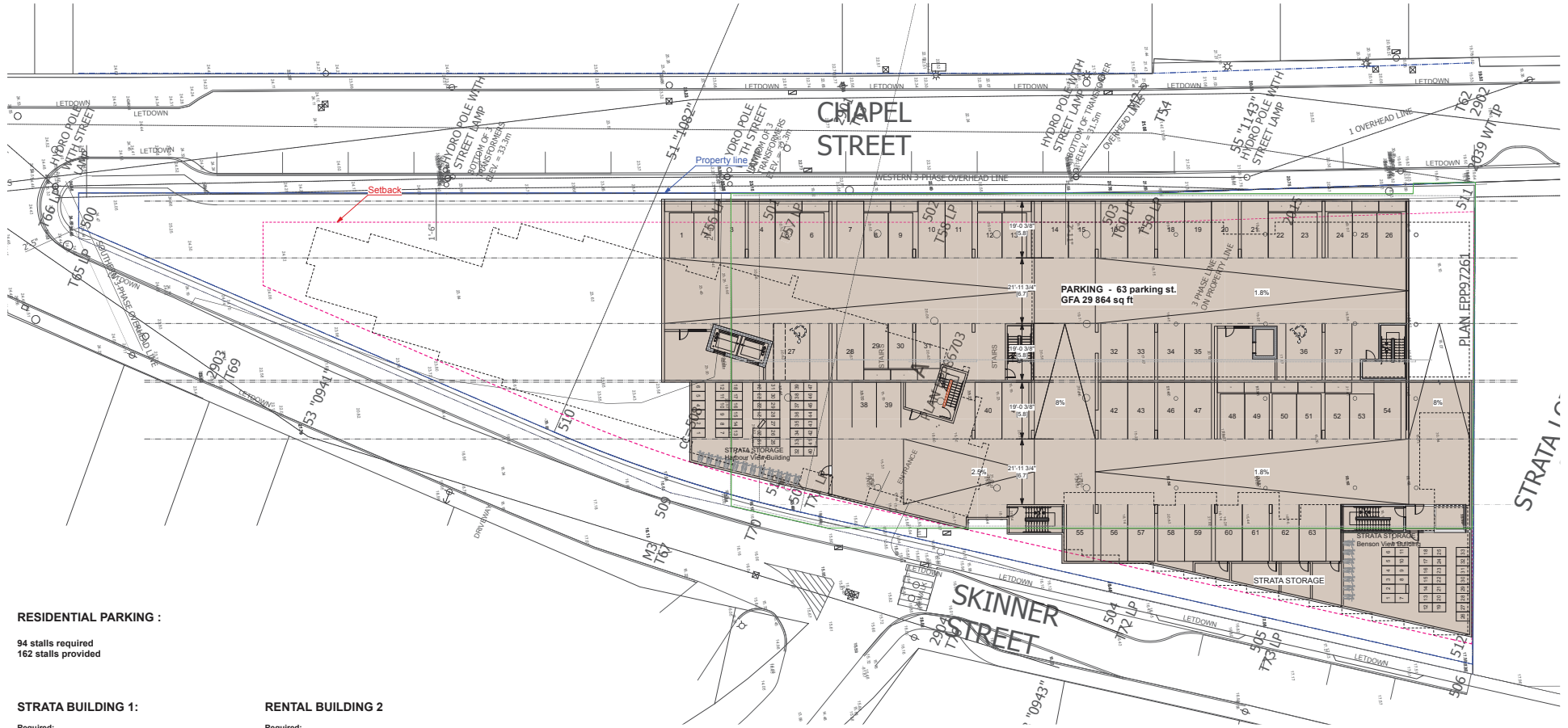
Nanaimo, BC  
09Mar23

77 Chapel Street / DP Revision

Parking Plan L2 **A202**

dHKArchitects





#### RESIDENTIAL PARKING :

94 stalls required  
162 stalls provided

#### STRATA BUILDING 1:

Required:  
Downtown Area 5:  
1BDM 51x0.5 = 25.5  
2BDM 20x0.9 = 18.0  
Studio 2x0.45 = 0.9

TOTAL (required) 44.4 STALLS  
including:  
Accessible parking - 3 stalls  
Visitor parking - 2 stalls  
Electric vehicle 25% - 11 stalls

Bicycle parking:  
Short term - 7 (73units x 0.1space)  
Long term - 36.5 (73units x 0.5space)

#### RENTAL BUILDING 2

Required:  
Downtown Area 5:  
1BDM 51x0.5 = 25.5  
2BDM 21x0.9 = 18.9  
STUDIO 12x0.45 = 5.4

TOTAL (required) 50 STALLS  
including:  
Accessible parking - 3 stalls  
Visitor parking - 2 stalls  
Electric vehicle 25% - 13 stalls

Bicycle parking:  
Short term - 8 (84units x 0.1space)  
Long term - 42 (84units x 0.5space)



RECEIVED  
DP1256  
2023-MAR-16  
CITY OF NANAIMO

Nanaimo, BC  
09Mar23

77 Chapel Street / DP Revision

Parking Plan L3 A203

dHKArchitects

