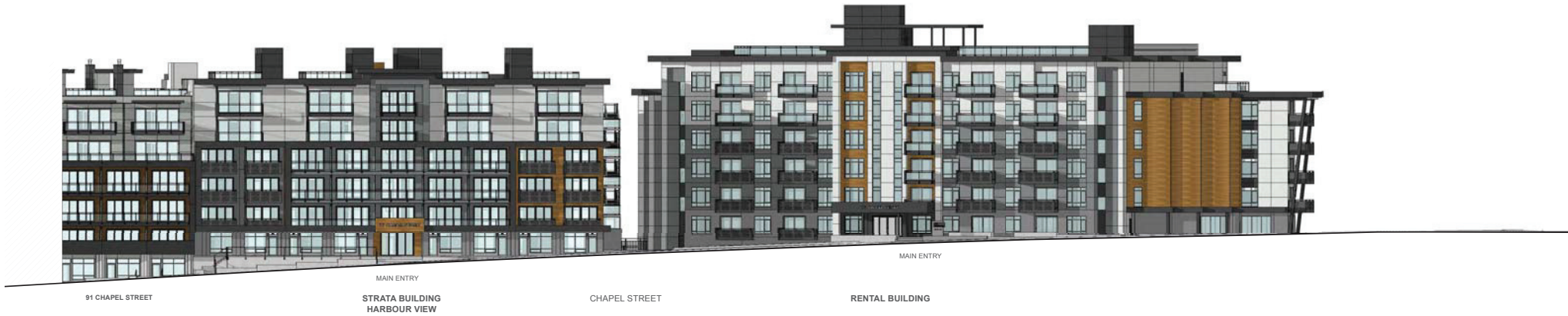


ATTACHMENT D BUILDING ELEVATIONS AND DETAILS

1 of 7



1 Chapel Street - Streetscape East Elevation
Scale: 1/16" = 1'-0"



2 Skinner Street - Streetscape West Elevation
Scale: 1/16" = 1'-0"

RECEIVED
DP1256
2023-MAR-16
C. H. K. ARCHITECTS

Nanaimo, BC
09Mar23

77 Chapel Street / DP Revision

Streetscape Elevations A300
As Noted.

dHKarchitects





1
A301 Strata Building - Harbour View - East Elevation (Facing Chapel St)
Scale: 1/8" = 1'-0"

- GENERAL NOTES**
1. ALL WORK TO CONFORM TO THE BCBC 2018 BUILDING CODE.
 2. ALL DRAWINGS TO BE READ IN CONJUNCTION WITH EACH OTHER.
 3. ALL EXISTING AND NEW DATUMS ARE GEODETIC AND SHOWN IN METERS. REFER TO SITE SURVEY AND CIVIL PACKAGES.
 4. CONTRACTOR TO VERIFY ALL DIMENSIONS AND CONFIRM SAME ON SITE. ARCHITECT TO BE CONTACTED REGARDING DISCREPANCIES.
 5. PROVIDE GUARDRAIL AT RETAINING WALLS OVER 2'-0" IN HEIGHT.
 6. ALL ILLUSTRATED SIGNAGE IS PLACEHOLDER. SIGNAGE WILL BE SUBMITTED THROUGH A FUTURE SIGN PERMIT APPLICATION.

MATERIAL PALETTE

- 1. LOW SLOPE MEMBRANE ROOF, IN DARK GREY TONES
- 2. FIBRE-CEMENT PANEL FASCIA, SMOOTH TEXTURE, IN 'IRON' GREY, WITH ALUMINUM CAP FLASHING, IN CHARCOAL GREY
- 3. WOOD-LOOK METAL SOFFIT/SMOOTH 4" V-GROOVE VENTED SOFFIT, WOOD GRAIN FINISH, IN 'FR'
- 4. SOFFIT: VENTED ALUMINUM SOFFIT, IN 'RUSTIC' GRANITE (DARK GREY TONES)
- 5. SOFFIT: VENTED FIBRE-CEMENT PANEL SOFFIT, SMOOTH TEXTURE, IN 'PEARL' GREY
- 6. FIBRE-CEMENT PANEL SIDING, SMOOTH TEXTURE, IN 'PEARL' GREY
- 7. FIBRE-CEMENT PANEL SIDING, SMOOTH TEXTURE, IN 'SLATE' GREY
- 8. FIBRE-CEMENT PANEL SIDING, SMOOTH TEXTURE, IN 'IRON' GREY
- 9. WOOD-LOOK METAL SIDING: SMOOTH 4" V-GROOVE PANEL SIDING, WOOD GRAIN FINISH, IN 'DARK CHERRY'
- 10. WOOD-LOOK METAL SIDING: SMOOTH 4" V-GROOVE PANEL SIDING, WOOD GRAIN FINISH, IN 'FR'
- 11. BRICK SIDING, IN 'ASHLAND TUNING' GREY WITH LIGHT GREY MORTAR
- 12. CAST-IN-PLACE CONCRETE WALL AND COLUMNS, SACK FINISHED, PAINT SEALED IN 'LIGHT' GREY TONES
- 13. CAST-IN-PLACE CONCRETE WALL, SACK FINISHED, PAINT SEALED IN 'CHARCOAL' GREY
- 14. INSULATED CONCRETE PANEL, 'DARK' GREY TONES
- 15. ALUMINUM STORE FRONT GLAZING, IN 'RESENT' GREY
- 16. ALUMINUM CURTAIN WALL GLAZING, IN 'RESENT' GREY
- 17. SPANDREL PANEL
- 18. ALUMINUM STORE FRONT DOOR, IN 'RESENT' GREY, WITH CLEAR TEMPERED GLASS INFILL PANELS
- 19. ALUMINUM STORE FRONT DOOR, IN 'CHARCOAL' GREY, WITH CLEAR TEMPERED GLASS INFILL PANELS
- 20. VINYL WINDOWS, IN 'RESENT' GREY
- 21. VINYL SLIDING GLASS DOORS, IN 'RESENT' GREY
- 22. VINYL SLIDING GLASS DOORS, IN 'CHARCOAL' GREY
- 23. VINYL SWING GLASS DOOR, IN 'RESENT' GREY
- 24. VINYL SWING DOOR, IN 'CHARCOAL' GREY, WITH TRANSBOM GLAZING ABOVE (ENTRY @ WALKWAY TBC)
- 25. STEEL DOOR, IN CHARCOAL GREY
- 26. STEEL DOOR, IN 'RESENT' GREY
- 27. GUARDRAIL HEIGHT PARAPET WALLS, WITH 1. FIBRE-CEMENT PANEL SIDING, IN 'IRON' GREY
- 28. ALUMINUM RAILING AND GUARDRAILS, IN 'RESENT' GREY FINISH, WITH CLEAR TEMPERED GLASS PANELS
- 29. ALUMINUM RAILING AND GUARDRAILS, IN 'CHARCOAL' GREY FINISH, WITH CLEAR TEMPERED GLASS PANELS
- 30. ALUMINUM RAILING AND GUARDRAILS, IN 'CHARCOAL' GREY FINISH, WITH DECORATIVE PERFORATED METAL INFILL PANELS, IN 'CHARCOAL' GREY TONES
- 31. PRIVACY SCREEN: ALUMINUM FRAME WITH FROSTED TEMPERED GLASS PANELS
- 32. ALUMINUM RAILING AND GUARDRAILS WITH PICKETS, IN 'CHARCOAL' GREY
- 33. BALCONIES WITH VINYL SIDING, IN LIGHT GREY
- 34. COURTYARD ELEVATED WALKWAYS WITH PAVEMENT WALKING SURFACE, IN LIGHT GREY
- 35. EXTERIOR METAL STAIRS, IN 'RESENT' GREY FINISH, WITH CLEAR TEMPERED GLASS INFILL PANELS
- 36. CONCRETE PATIO AND STAIRS, WITH ALUMINUM RAILING AND GUARDRAILS, IN 'CHARCOAL' GREY FINISH, WITH DECORATIVE PERFORATED METAL INFILL PANELS, IN 'CHARCOAL' GREY TONES
- 37. PRIVACY SCREEN: ALUMINUM FRAME WITH DECORATIVE PERFORATED METAL INFILL PANELS, IN 'CHARCOAL' GREY TONES
- 38. MECHANICAL SCREEN LOUVERS, METAL FRAME, IN 'BLACK'
- 39. CAST-IN-PLACE CONCRETE WALL, HORIZONTAL CEDAR LINER FINISHED, PAINT SEALED IN 'CHARCOAL' GREY
- 40. GARAGE ON DOOR, OPEN PICKET STYLE, IN 'BLACK'
- 41. METAL PANEL SIDING IN 'SLATE' GREY

RECEIVED
DP-1258
2023-MAR-16
CITY OF VANCOUVER

0 2'-0" 10'-0" 20'-0"
1/8" = 1'-0"

Nanaimo, BC
16Mar23

77 Chapel Street / DP Revision

Strata Building Harbour View - Chapel Street Elevation A301
1/8" = 1'-0"

dHkarchitects dHk



1 Strata Building - Benson View - West Elevation (Facing Skinner St)
Scale: 1/8" = 1'-0"

GENERAL NOTES

1. ALL WORK TO CONFORM TO THE BCBC 2018 BUILDING CODE.
2. ALL DRAWINGS TO BE READ IN CONJUNCTION WITH EACH OTHER.
3. ALL EXISTING AND NEW DATUMS ARE GEODETIC AND SHOWN IN METERS. REFER TO SITE SURVEY AND CIVIL PACKAGES.
4. CONTRACTOR TO VERIFY ALL DIMENSIONS AND CONFIRM SAME ON SITE. ARCHITECT TO BE CONTACTED REGARDING DISCREPANCIES.
5. PROVIDE GUARDRAIL AT RETAINING WALLS OVER 2'-0" IN HEIGHT.
6. ALL ILLUSTRATED SIGNAGE IS PLACEHOLDER. SIGNAGE WILL BE SUBMITTED THROUGH A FUTURE SIGN PERMIT APPLICATION.

MATERIAL PALETTE

- 1 LOW SLOPE MEMBRANE ROOF, IN DARK GREY TONES
- 2 FIBRE-CEMENT PANEL FASCIA, SMOOTH TEXTURE, IN 'IRON' GREY, WITH ALUMINUM CAP FLASHING, IN CHARCOAL GREY
- 3 WOOD-LOOK METAL SOFFIT, SMOOTH 4" V-GROOVE VENTED SOFFIT, WOOD GRAIN FINISH, IN 'FIR'
- 4 SOFFIT, VENTED ALUMINUM SOFFIT, IN 'RUSTIC' GRANITE (DARK GREY TONES)
- 5 SOFFIT, VENTED FIBRE-CEMENT PANEL SOFFIT, SMOOTH TEXTURE, IN 'PEARL' GREY
- 6 FIBRE-CEMENT PANEL SIDING, SMOOTH TEXTURE, IN 'PEARL' GREY
- 7 FIBRE-CEMENT PANEL SIDING, SMOOTH TEXTURE, IN 'SLATE' GREY
- 8 FIBRE-CEMENT PANEL SIDING, SMOOTH TEXTURE, IN 'IRON' GREY
- 9 WOOD-LOOK METAL SIDING, SMOOTH 4" V-GROOVE PANEL SIDING, WOOD GRAIN FINISH, IN 'DARK CHERRY'
- 10 WOOD-LOOK METAL SIDING, SMOOTH 4" V-GROOVE PANEL SIDING, WOOD GRAIN FINISH, IN 'FIR'
- 11 BRICK SIDING, IN 'HIGHLAND TUMBER' GREY WITH LIGHT GREY MORTAR
- 12 CAST-IN-PLACE CONCRETE WALL AND COLUMNS, SACK FINISHED, PAINT SEALED IN 'LIGHT' GREY TONES
- 13 CAST-IN-PLACE CONCRETE WALL, SACK FINISHED, PAINT SEALED IN 'CHARCOAL' GREY
- 14 INSULATED CONCRETE PANEL, 'DARK' GREY TONES
- 15 ALUMINUM STORE FRONT GLAZING, IN 'REGEN'T' GREY
- 16 ALUMINUM CURTAIN WALL GLAZING, IN 'REGEN'T' GREY
- 17 SPANDREL PANEL
- 18 ALUMINUM STORE FRONT DOOR, IN 'REGEN'T' GREY, WITH CLEAR TEMPERED GLASS INFILL PANELS
- 19 ALUMINUM STORE FRONT DOOR, IN 'CHARCOAL' GREY, WITH CLEAR TEMPERED GLASS INFILL PANELS
- 20 VINYL WINDOWS, IN 'REGEN'T' GREY
- 21 VINYL SLIDING GLASS DOORS, IN 'REGEN'T' GREY
- 22 VINYL SLIDING GLASS DOORS, IN 'CHARCOAL' GREY
- 23 VINYL SWING GLASS DOOR, IN 'REGEN'T' GREY
- 24 VINYL SWING DOOR, IN 'CHARCOAL' GREY, WITH TRANSBOM GLAZING ABOVE (ENTRY @ WALKWAY, TBC)
- 25 STEEL DOOR, IN 'CHARCOAL' GREY
- 26 STEEL DOOR, IN 'REGEN'T' GREY

- 27 GUARDRAIL HEIGHT PARAPET WALLS, WITH 1 FIBRE-CEMENT PANEL SIDING, IN 'IRON' GREY
- 28 ALUMINUM RAILING AND GUARDRAILS, IN 'REGEN'T' GREY FINISH, WITH CLEAR TEMPERED GLASS PANELS
- 29 ALUMINUM RAILING AND GUARDRAILS, IN 'CHARCOAL' GREY FINISH, WITH CLEAR TEMPERED GLASS PANELS
- 30 ALUMINUM RAILING AND GUARDRAILS, IN 'CHARCOAL' GREY FINISH, WITH DECORATIVE PERFORATED METAL INFILL PANELS, IN 'CHARCOAL' GREY TONES
- 31 PRIVACY SCREEN, ALUMINUM FRAME WITH FROSTED TEMPERED GLASS PANELS
- 32 BALCONIES WITH VINYL DECKING, IN 'LIGHT' GREY
- 33 COURTYARD ELEVATED WALKWAYS WITH PAVING WALKING SURFACE, IN 'LIGHT' GREY
- 34 EXTERIOR METAL STAIRS, IN 'REGEN'T' GREY FINISH, WITH CLEAR TEMPERED GLASS INFILL PANELS
- 35 CONCRETE PATIO AND STAIRS, WITH ALUMINUM RAILING AND GUARDRAILS, IN 'CHARCOAL' GREY FINISH, WITH DECORATIVE PERFORATED METAL INFILL PANELS, IN 'CHARCOAL' GREY TONES
- 36 PRIVACY SCREEN, ALUMINUM FRAME WITH DECORATIVE PERFORATED METAL INFILL PANELS, IN 'CHARCOAL' GREY TONES
- 37 MECHANICAL SCREEN LOUVERS, METAL FRAME, IN 'BLACK'
- 38 CAST-IN-PLACE CONCRETE WALL, HORIZONTAL CEDAR LINER FINISHED, PAINT SEALED IN 'CHARCOAL' GREY
- 39 GARGOLE ON DOOR, OPEN PICKET STYLE, IN 'BLACK'
- 40 METAL PANEL SIDING IN 'SLATE' GREY

** PRE-FINISHED METAL FLASHING TO COLOUR MATCH MATERIALS
ALUMINUM FLASHING, IN 'REGEN'T' GREY, WESTFORM METALS
ALUMINUM FLASHING, IN 'SLATE' GREY, WESTFORM METALS
ALUMINUM FLASHING, IN 'CHARCOAL' GREY, WESTFORM METALS

0 2'-0" 10'-0" 20'-0"
1/8" = 1'-0"

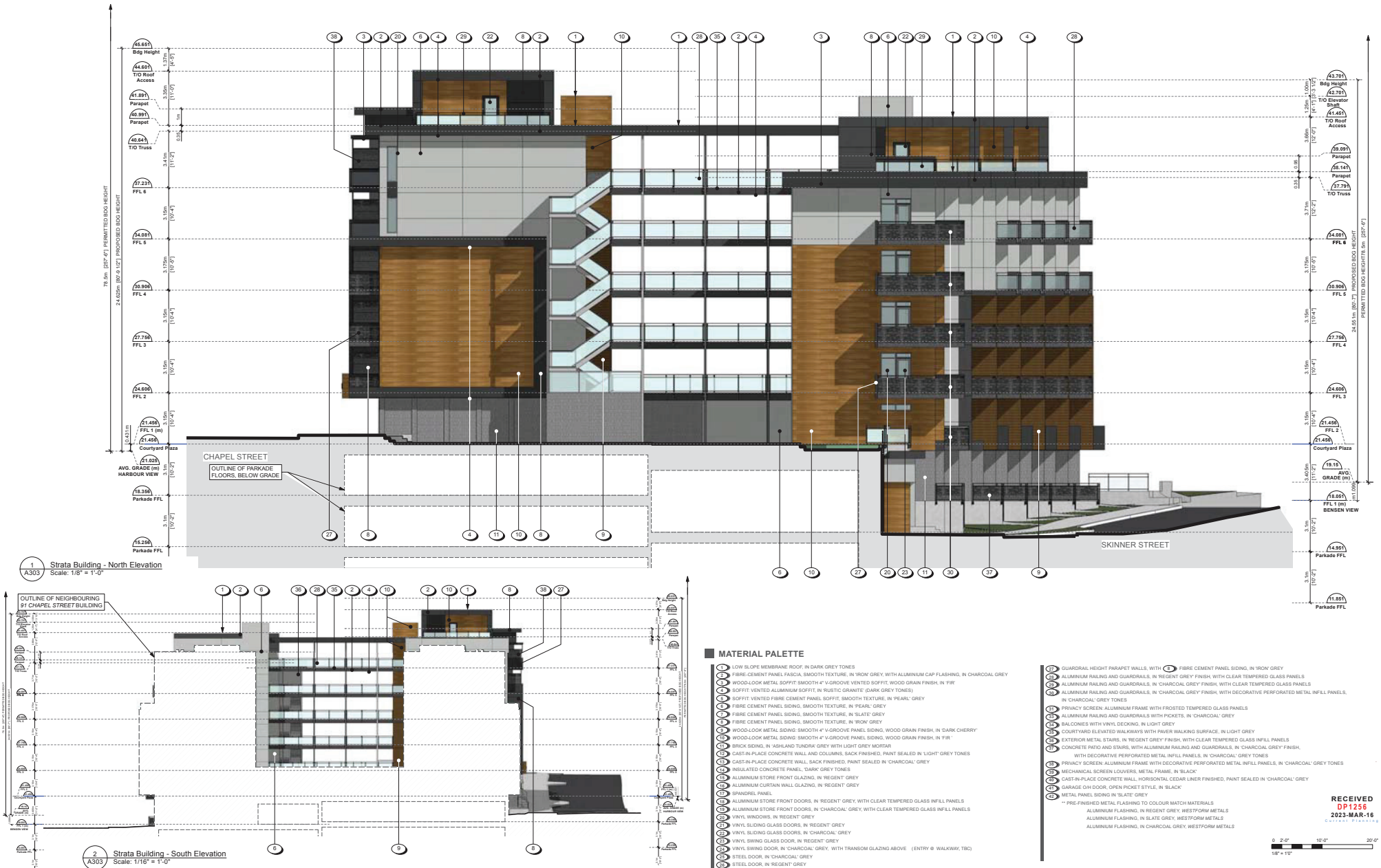
RECEIVED
DP1256
2023-MAR-16
Gallant Planning

Nanaimo, BC
09Mar23

77 Chapel Street / DP Revision

Strata Building Benson View - Skinner Street Elevation A302
1/8" = 1'-0"

dHkarchitects dHka





1 Rental Building - East Elevation (Facing Chapel St)
Scale: 1/8" = 1'-0"

GENERAL NOTES

1. ALL WORK TO CONFORM TO THE BCBC 2018 BUILDING CODE.
2. ALL DRAWINGS TO BE READ IN CONJUNCTION WITH EACH OTHER.
3. ALL EXISTING AND NEW DATUMS ARE GEODETIC AND SHOWN IN METERS. REFER TO SITE SURVEY AND CIVIL PACKAGES.
4. CONTRACTOR TO VERIFY ALL DIMENSIONS AND CONFIRM SAME ON SITE. ARCHITECT TO BE CONTACTED REGARDING DISCREPANCIES.
5. PROVIDE GUARDRAIL AT RETAINING WALLS OVER 2'-0" IN HEIGHT.
6. ALL ILLUSTRATED SIGNAGE IS PLACEHOLDER. SIGNAGE WILL BE SUBMITTED THROUGH A FUTURE SIGN PERMIT APPLICATION.

MATERIAL PALETTE

- 1 LOW SLOPE MEMBRANE ROOF, IN DARK GREY TONES
- 2 FIBRE CEMENT PANEL FASCIA, SMOOTH TEXTURE, IN 'IRON' GREY, WITH ALUMINUM CAP FLASHING, IN CHARCOAL GREY
- 3 WOOD-LOOK METAL SOFFIT, SMOOTH 4" V-GROOVE VENTED SOFFIT, WOOD GRAIN FINISH, IN 'FIR'
- 4 SOFFIT VENTED ALUMINUM SOFFIT, IN 'RUSTIC GRANITE' (DARK GREY TONES)
- 5 SOFFIT VENTED FIBRE CEMENT PANEL SOFFIT, SMOOTH TEXTURE, IN 'PEARL' GREY
- 6 FIBRE CEMENT PANEL SIDING, SMOOTH TEXTURE, IN 'PEARL' GREY
- 7 FIBRE CEMENT PANEL SIDING, SMOOTH TEXTURE, IN 'SLATE' GREY
- 8 FIBRE CEMENT PANEL SIDING, SMOOTH TEXTURE, IN 'IRON' GREY
- 9 WOOD-LOOK METAL SIDING, SMOOTH 4" V-GROOVE PANEL SIDING, WOOD GRAIN FINISH, IN 'DARK CHERRY'
- 10 WOOD-LOOK METAL SIDING, SMOOTH 4" V-GROOVE PANEL SIDING, WOOD GRAIN FINISH, IN 'FIR'
- 11 BRICK SIDING, IN 'HIGHLAND TUMBLE' GREY WITH LIGHT GRAY MORTAR
- 12 CAST-IN-PLACE CONCRETE WALL AND COLUMNS, SACK FINISHED, PAINT SEALED IN 'LIGHT' GREY TONES
- 13 CAST-IN-PLACE CONCRETE WALL, SACK FINISHED, PAINT SEALED IN 'CHARCOAL' GREY
- 14 INSULATED CONCRETE PANEL, 'DARK' GREY TONES
- 15 ALUMINUM STORE FRONT GLAZING, IN 'RESENT' GREY
- 16 ALUMINUM CURTAIN WALL GLAZING, IN 'RESENT' GREY
- 17 SPANDREL PANEL
- 18 ALUMINUM STORE FRONT DOOR, IN 'RESENT' GREY, WITH CLEAR TEMPERED GLASS INFILL PANELS
- 19 ALUMINUM STORE FRONT DOOR, IN 'CHARCOAL' GREY, WITH CLEAR TEMPERED GLASS INFILL PANELS
- 20 VINYL WINDOWS, IN 'RESENT' GREY
- 21 VINYL SLIDING GLASS DOORS, IN 'RESENT' GREY
- 22 VINYL SLIDING GLASS DOORS, IN 'CHARCOAL' GREY
- 23 VINYL SWING GLASS DOOR, IN 'RESENT' GREY
- 24 VINYL SWING DOOR, IN 'CHARCOAL' GREY, WITH TRANSBOM GLAZING ABOVE (ENTRY @ WALKWAY, TBC)
- 25 STEEL DOOR, IN 'CHARCOAL' GREY
- 26 STEEL DOOR, IN 'RESENT' GREY

- 27 GUARDRAIL HEIGHT PARAPET WALLS, WITH 1 FIBRE CEMENT PANEL SIDING, IN 'IRON' GREY
- 28 ALUMINUM RAILING AND GUARDRAILS, IN 'RESENT' GREY FINISH, WITH CLEAR TEMPERED GLASS PANELS
- 29 ALUMINUM RAILING AND GUARDRAILS, IN 'CHARCOAL' GREY FINISH, WITH CLEAR TEMPERED GLASS PANELS
- 30 ALUMINUM RAILING AND GUARDRAILS, IN 'CHARCOAL' GREY FINISH, WITH DECORATIVE PERFORATED METAL INFILL PANELS, IN 'CHARCOAL' GREY TONES
- 31 PRIVACY SCREEN: ALUMINUM FRAME WITH FROSTED TEMPERED GLASS PANELS
- 32 ALUMINUM RAILING AND GUARDRAILS WITH PICKETS, IN 'CHARCOAL' GREY
- 33 BALCONIES WITH VINYL SIDING, IN LIGHT GREY
- 34 COURTYARD ELEVATED WALKWAYS WITH PAVING WALKING SURFACE, IN LIGHT GREY
- 35 EXTERIOR METAL STAIRS, IN 'RESENT' GREY FINISH, WITH CLEAR TEMPERED GLASS INFILL PANELS
- 36 CONCRETE PATIO AND STAIRS, WITH ALUMINUM RAILING AND GUARDRAILS, IN 'CHARCOAL' GREY FINISH, WITH DECORATIVE PERFORATED METAL INFILL PANELS, IN 'CHARCOAL' GREY TONES
- 37 PRIVACY SCREEN: ALUMINUM FRAME WITH DECORATIVE PERFORATED METAL INFILL PANELS, IN 'CHARCOAL' GREY TONES
- 38 MECHANICAL SCREEN LOUVERS, METAL FRAME, IN 'BLACK'
- 39 CAST-IN-PLACE CONCRETE WALL, HORIZONTAL CEDAR LINER FINISHED, PAINT SEALED IN 'CHARCOAL' GREY
- 40 GARGAGE DOOR, OPEN PICKET STYLE, IN 'BLACK'
- 41 METAL PANEL SIDING IN 'SLATE' GREY

** PRE-FINISHED METAL FLASHING TO COLOUR MATCH MATERIALS
ALUMINUM FLASHING, IN 'RESENT' GREY, WESTFORM METALS
ALUMINUM FLASHING, IN 'SLATE' GREY, WESTFORM METALS
ALUMINUM FLASHING, IN 'CHARCOAL' GREY, WESTFORM METALS

0 2'-0" 10'-0" 20'-0"
1/8" = 1'-0"

RECEIVED
DP1256
2023-MAR-16
COURTESY PLANNING

Nanaimo, BC
09Mar23

77 Chapel Street / DP Revision

Rental Building Chapel Street Elevation
A304
1/8" = 1'-0"

dHArchitects





1 Rental Building - West Elevation (Facing Skinner St)
Scale: 1/8" = 1'-0"

GENERAL NOTES

1. ALL WORK TO CONFORM TO THE BCBC 2018 BUILDING CODE.
2. ALL DRAWINGS TO BE READ IN CONJUNCTION WITH EACH OTHER.
3. ALL EXISTING AND NEW DATUMS ARE GEODETIC AND SHOWN IN METERS. REFER TO SITE SURVEY AND CIVIL PACKAGES.
4. CONTRACTOR TO VERIFY ALL DIMENSIONS AND CONFIRM SAME ON SITE. ARCHITECT TO BE CONTACTED REGARDING DISCREPANCIES.
5. PROVIDE GUARDRAIL AT RETAINING WALLS OVER 2'-0" IN HEIGHT.
6. ALL ILLUSTRATED SIGNAGE IS PLACEHOLDER. SIGNAGE WILL BE SUBMITTED THROUGH A FUTURE SIGN PERMIT APPLICATION.

MATERIAL PALETTE

- 1 LOW SLOPE MEMBRANE ROOF, IN DARK GREY TONES
- 2 FIBRE-CEMENT PANEL FASCIA, SMOOTH TEXTURE, IN 'IRON' GREY, WITH ALUMINUM CAP FLASHING, IN CHARCOAL GREY
- 3 WOOD-LOOK METAL SOFFIT, SMOOTH 4" V-GROOVE VENTED SOFFIT, WOOD GRAIN FINISH, IN 'FIR'
- 4 SOFFIT, VENTED ALUMINUM SOFFIT, IN 'RUSTIC' GRANITE (DARK GREY TONES)
- 5 SOFFIT, VENTED FIBRE-CEMENT PANEL SOFFIT, SMOOTH TEXTURE, IN 'PEARL' GREY
- 6 FIBRE-CEMENT PANEL SIDING, SMOOTH TEXTURE, IN 'PEARL' GREY
- 7 FIBRE-CEMENT PANEL SIDING, SMOOTH TEXTURE, IN 'SLATE' GREY
- 8 FIBRE-CEMENT PANEL SIDING, SMOOTH TEXTURE, IN 'IRON' GREY
- 9 WOOD-LOOK METAL SIDING, SMOOTH 4" V-GROOVE PANEL SIDING, WOOD GRAIN FINISH, IN 'DARK CHERRY'
- 10 WOOD-LOOK METAL SIDING, SMOOTH 4" V-GROOVE PANEL SIDING, WOOD GRAIN FINISH, IN 'FIR'
- 11 BRICK SIDING, IN 'HIGHLAND TUMBLE' GREY WITH LIGHT GREY MORTAR
- 12 CAST-IN-PLACE CONCRETE WALL AND COLUMNS, SACK FINISHED, PAINT SEALED IN 'LIGHT' GREY TONES
- 13 CAST-IN-PLACE CONCRETE WALL, SACK FINISHED, PAINT SEALED IN 'CHARCOAL' GREY
- 14 INSULATED CONCRETE PANEL, 'DARK' GREY TONES
- 15 ALUMINUM STORE FRONT GLAZING, IN 'RESENT' GREY
- 16 ALUMINUM CURTAIN WALL GLAZING, IN 'RESENT' GREY
- 17 SPANDREL PANEL
- 18 ALUMINUM STORE FRONT DOORS, IN 'RESENT' GREY, WITH CLEAR TEMPERED GLASS INFILL PANELS
- 19 ALUMINUM STORE FRONT DOORS, IN 'CHARCOAL' GREY, WITH CLEAR TEMPERED GLASS INFILL PANELS
- 20 VINYL WINDOWS, IN 'RESENT' GREY
- 21 VINYL SLIDING GLASS DOORS, IN 'RESENT' GREY
- 22 VINYL SLIDING GLASS DOORS, IN 'CHARCOAL' GREY
- 23 VINYL SLIDING GLASS DOORS, IN 'RESENT' GREY
- 24 VINYL SWING DOOR, IN 'CHARCOAL' GREY, WITH TRANSBOM GLAZING ABOVE (ENTRY @ WALKWAY, TBC)
- 25 STEEL DOOR, IN 'CHARCOAL' GREY
- 26 STEEL DOOR, IN 'RESENT' GREY

- 27 GUARDRAIL HEIGHT FRAPPET WALLS, WITH 1 FIBRE-CEMENT PANEL SIDING, IN 'IRON' GREY
- 28 ALUMINUM RAILING AND GUARDRAILS, IN 'RESENT' GREY FINISH, WITH CLEAR TEMPERED GLASS PANELS
- 29 ALUMINUM RAILING AND GUARDRAILS, IN 'CHARCOAL' GREY FINISH, WITH CLEAR TEMPERED GLASS PANELS
- 30 ALUMINUM RAILING AND GUARDRAILS, IN 'CHARCOAL' GREY FINISH, WITH DECORATIVE PERFORATED METAL INFILL PANELS, IN 'CHARCOAL' GREY TONES
- 31 PRIVACY SCREEN: ALUMINUM FRAME WITH FROSTED TEMPERED GLASS PANELS
- 32 ALUMINUM RAILING AND GUARDRAILS WITH POCKETS, IN 'CHARCOAL' GREY
- 33 BALCONIES WITH VINYL SIDING, IN 'LIGHT' GREY
- 34 COURTYARD ELEVATED WALKWAYS WITH PAVEMENT SURFACE, IN 'LIGHT' GREY
- 35 EXTERIOR METAL STAIRS, IN 'RESENT' GREY FINISH, WITH CLEAR TEMPERED GLASS INFILL PANELS
- 36 CONCRETE PATIO AND STAIRS, WITH ALUMINUM RAILING AND GUARDRAILS, IN 'CHARCOAL' GREY FINISH, WITH DECORATIVE PERFORATED METAL INFILL PANELS, IN 'CHARCOAL' GREY TONES
- 37 PRIVACY SCREEN: ALUMINUM FRAME WITH DECORATIVE PERFORATED METAL INFILL PANELS, IN 'CHARCOAL' GREY TONES
- 38 MECHANICAL SCREEN LOUVERS, METAL FRAME, IN 'BLACK'
- 39 CAST-IN-PLACE CONCRETE WALL, HORIZONTAL CEDAR LINER FINISHED, PAINT SEALED IN 'CHARCOAL' GREY
- 40 GARBAGE CH DOOR, OPEN POCKET STYLE, IN 'BLACK'
- 41 METAL PANEL SIDING IN 'SLATE' GREY

* PRE-FINISHED METAL FLASHING TO COLOUR MATCH MATERIALS
ALUMINUM FLASHING, IN 'RESENT' GREY, WESTFORM METALS
ALUMINUM FLASHING, IN 'SLATE' GREY, WESTFORM METALS
ALUMINUM FLASHING, IN 'CHARCOAL' GREY, WESTFORM METALS

0 2'-0" 10'-0" 20'-0"
1/8" = 1'-0"

RECEIVED
DP1256
2023-MAR-16
12:00 PM

Nanaimo, BC
09Mar23

77 Chapel Street / DP Revision

Rental Building Skinner Street Elevation
A305
1/8" = 1'-0"

dHKarchitects





2 Rental Building - South Elevation
A306 Scale: 1/8" = 1'-0"

1	LOW SLOPE MEMBR. ROOF, IN DARK GREY TONES
2	FIBRE CEMENT PANEL, FACIA, SMOOTH TEXTURE, IN 'VIRGO' GREY, WITH ALUMINIUM CAP FLASHING, IN CHARCOAL GREY
3	WOOD-LOOK METAL SOFFIT, SMOOTH + UNCOLOURED VENTED SOFFIT, WOOD GRAIN FINISH, IN 'FIR'
4	SOFFIT VENTED ALUMINIUM SOFFIT, IN LIGHT GRANITE (DARK GREY TONES)
5	WOOD-LOOK VENTED FIBRE CEMENT PANEL, SOFFIT, SMOOTH TEXTURE, IN 'PEARL' GREY
6	FIBRE CEMENT PANEL, SIDING, SMOOTH TEXTURE, IN 'PEARL' GREY
7	FIBRE CEMENT PANEL, SIDING, SMOOTH TEXTURE, IN 'SLATE' GREY
8	FIBRE CEMENT PANEL, SIDING, SMOOTH TEXTURE, IN 'VIRGO' GREY
9	WOOD-LOOK METAL SIDING, SMOOTH + V-GROOVE PANEL SIDING, WOOD GRAIN FINISH, IN 'DARK CHERRY'
10	WOOD-LOOK METAL SIDING, SMOOTH + V-GROOVE PANEL SIDING, WOOD GRAIN FINISH, IN 'FIR'
11	BRICK SIDING, IN 'ASHLAND' TUNDRY GREY, WITH LIGHT GREY MORTAR
12	CONCRETE IN-PLACE CONCRETE WITH SMOOTH FINISH, FRAMED, PAINT SLEED IN 'LIGHT GREY TONES
13	CAST-IN-PLACE CONCRETE WALL, SMOOTH FINISH, PAINT SLEED IN 'CHARCOAL' GREY
14	INSULATED CONCRETE PANEL, 'DARK' GREY TONES
15	ALUMINIUM STORE FRONT GLAZING, IN 'RECENT' GREY
16	ALUMINIUM CURTAIN WALL GLAZING, IN 'RECENT' GREY
17	SPANDREL, PANEL
18	ALUMINIUM STORE FRONT DOORS, IN 'RECENT' GREY, WITH CLEAR TEMPERED GLASS INFL. PANELS
19	ALUMINIUM STORE FRONT DOORS, IN 'CHARCOAL' GREY, WITH CLEAR TEMPERED GLASS INFL. PANELS
20	WYNYL WINDOWS, IN 'RECENT' GREY
21	WYNYL SLIDING GLASS DOORS, IN 'RECENT' GREY
22	WYNYL SLIDING GLASS DOORS, IN 'CHARCOAL' GREY
23	WYNYL SLIDING GLASS DOOR, IN 'RECENT' GREY
24	WYNYL SLIDING DOOR, IN 'CHARCOAL' GREY, WITH TRANSLUC GLAZING ABOVE (ENTRY W WALKWAY, TRC)
25	STEEL DOOR, IN 'CHARCOAL' GREY
26	STEEL DOOR, IN 'RECENT' GREY

- ** PRE-FINISHED METAL FLASHING TO COLOUR MATCH MATERIALS
- ALUMINIUM FLASHING, IN REGENT GREY, WESTFORM METALS
- ALUMINIUM FLASHING, IN SLATE GREY, WESTFORM METALS
- ALUMINIUM FLASHING, IN CHARCOAL GREY, WESTFORM METALS

1. ALL WORK TO CONFORM TO THE CBC 2018 BUILDING CODE.
2. ALL DRAWINGS TO BE READ IN CONJUNCTION WITH EACH OTHER.
3. ALL EXISTING AND NEW DATUMS ARE GEODETIC AND SHOWN IN METERS.
REFER TO SITE SURVEY AND CIVIL PACKAGES.
4. CONTRACTOR TO VERIFY ALL DIMENSIONS AND CONFIRM SAME ON SITE.
ARCHITECT TO BE CONTACTED REGARDING DISCREPANCIES.
5. PROVIDE GUARDRAIL AT RETAINING WALLS OVER 2'-0" IN HEIGHT.
6. ALL ILLUSTRATED SIGNAGE IS PLACEHOLDER. SIGNAGE WILL BE
SUBMITTED THROUGH A FUTURE SIGN PERMIT APPLICATION.