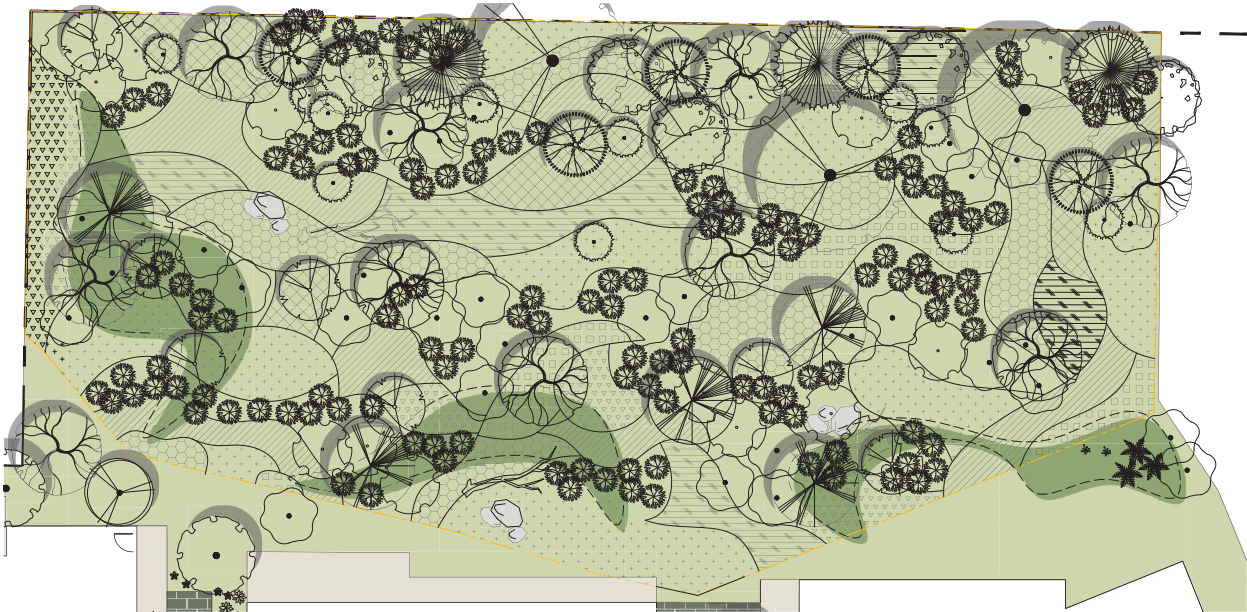


ATTACHMENT F PROPOSED RIPARIAN RESTORATION PLAN



PLANT SCHEDULE

Quantity	Symbol	Latin Name	Common Name	Container	Native	Pollinator
124		Arctostaphylos uva-ursi	Kinnikinnick	4"	y	
146		Blechnum spicant	Deer Fern	#1	y	
137		Gaultheria shallon	Salal	#1	y	y
314		Heuchera spp	Alumroot	#1	y	
146		Mahonia Nervosa	Dull Oregon Grape	#1	y	y
30		Olmeria cerasiformis	Indian plum	#2	y	y
476		Polystichum munifolium	Western sword fern	#1	y	
300		Tiarella cordifolia	Foam Flower	#1	y	
254		Trillium ovatum	Western Trillium	#1	y	
22		Vaccinium ovatum	Evergreen Huckleberry	#2	y	y

NOTES:
 1. TOTAL PLANT QUANTITY: 1949.
 PLANT DENSITY: 1.38 PER ONE SQUARE METER.
 2. PLANTS IN PLANT LISTS ARE SPECIFIED ACCORDING TO THE CANADIAN NURSERY LANDSCAPE ASSOCIATION CANADIAN STANDARDS FOR NURSERY STOCK AND SECTION 12, CONTAINER GROWN PLANTS FROM THE BC LANDSCAPE STANDARD, CURRENT EDITION.

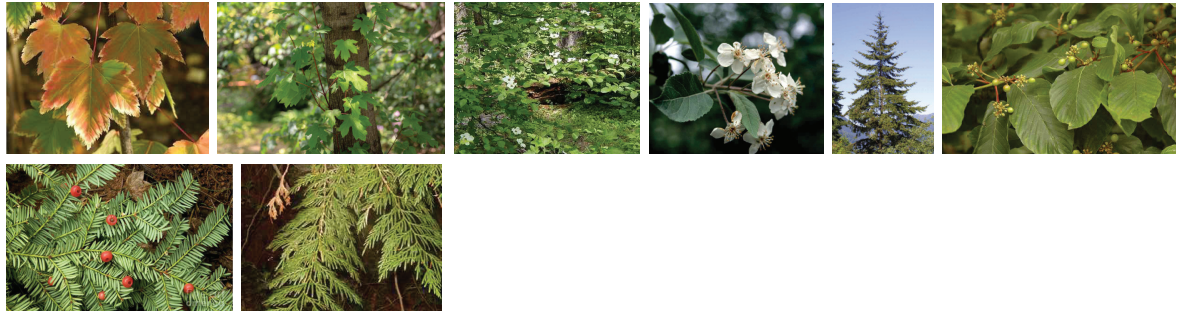
NATIVE PLANTS & SHRUBS PALLET



LEGEND



NATIVE TREE PALLET



TREE SCHEDULE

Quantity	Symbol	Latin Name	Common Name	Container	Caliper	Height	Native
7		Acer glabrum	Douglas Maple	B&B	40mm		y
3		Acer macrophyllum	Big Leaf Maple	B&B	60mm		y
5		Cornus nuttallii	Pacific Flowering Dogwood	B&B	60mm		y
10		Malus fusca	Pacific Crab Apple	B&B	50mm		y
5		Pseudotsuga menziesii	Douglas Fir	B&B		2.5m	y
5		Rhamnus purshiana	Cascara	B&B	40mm		y
11		Taxus brevifolia	Pacific Yew	B&B		2.5m	y
3		Thuja plicata	Western Red Cedar	B&B		3m	y

NOTES:
 1. PLANTS IN PLANT LISTS ARE SPECIFIED ACCORDING TO THE CANADIAN NURSERY LANDSCAPE ASSOCIATION CANADIAN STANDARDS FOR NURSERY STOCK AND SECTION 12, CONTAINER GROWN PLANTS FROM THE BC LANDSCAPE STANDARD, CURRENT EDITION.



1608 Camosun Street, Victoria BC V8T 3E6
 info@biophiliacollective.ca 250.590.1156

PROJECT ADDRESS:
**878 PARK AVE,
 NANAIMO, BC**

DESIGNED BY: BIANCA BODLEY
 DRAWN BY: SS

NO.	ISSUE	DATE
3	ISSUED FOR REVIEW	201202
2	ISSUED FOR REZONING	201207
1	ISSUED FOR REZONING	200908
NO.	ISSUE	DATE

SEAL:



DRAWING TITLE:
RESTORATION PLAN

DWG NO:
L2

RECEIVED
RA484
 2023-FEB-07

SCALE: 1:200