

Monitoring Strategy | Introduction

2023-JAN-23



Why



Provide meaningful, holistic **insights** and tell us if our actions are **effective**

Track the progress towards **City Goals**

Indicators and Targets

KEY INDICATORS



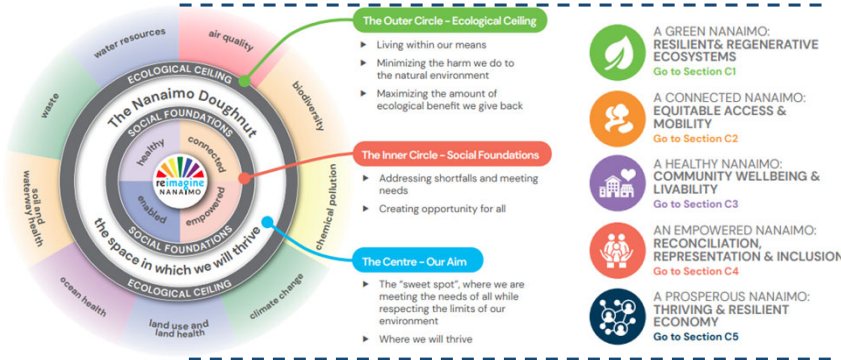
- Tell us how we are doing
- Show how well a system is working over a period of time

TARGETS



- Define desired outcomes
- Show what we wish to achieve and when we want to achieve it by

The Nanaimo Doughnut Framework → Five City Goals



2021 DRAFT INDICATORS AND TARGETS

DRAFT INDICATORS & TARGETS – ECOLOGICAL CEILING

A GREEN NANAIMO:
RESILIENT & REGENERATIVE ECOSYSTEMS

Water Resources: so everyone has access to clean drinking water and we preserve this resource for future generations

Element	Draft Indicator	Draft Target	Baseline (if known)
Water Consumption by Residents	New target to be set as previous target was exceeded	200 litres / capita / day	(2019)

Waste: so we use our resources sustainably

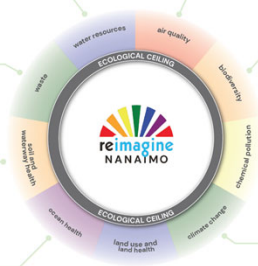
Element	Draft Indicator	Draft Target	Baseline (if known)
Household Waste Sent to the Landfill	Household Wt	39 kg / household / year	(2019)
	By 2030	150 kg / household / yr	
	By 2040	100 kg / household / yr	
	By 2050	500 kg / household / yr	

Soil and waterway health: so our lands and waters are healthy and cared for / managed sustainably

Element	Draft Indicator	Draft Target	Baseline (if known)
Number of Water Samples at Monitored Sites Meeting BC Water Quality Guidelines	Zero samples that fail to meet guidelines	TBD	

Ocean health: so our lands and waters are healthy and cared for / managed sustainably

Element	Draft Indicator	Draft Target	Baseline (if known)
Number of Water Samples at Monitored Sites Meeting BC Water Quality Guidelines	Zero samples that fail to meet guidelines	TBD	



Air quality: so everyone has good quality air to breathe

Monitored hourly at the provincial level

Biodiversity: so our ecosystems are healthy and cared for / managed sustainably

Element	Draft Indicator	Draft Target	Baseline (if known)
Area of Lands Dedicated for Natural Area Protection (PAC-Zoning)	General increase	2,182 ha	
	Specific target TBD		

Chemical Pollution: so our lands and waters are healthy and cared for / managed sustainably

Element	Draft Indicator	Draft Target	Baseline (if known)
Number of Water Samples at Monitored Sites Meeting BC Water Quality Guidelines	Zero samples that fail to meet guidelines	TBD	

Climate change: so the impacts of climate change are minimized for present and future generations

Element	Draft Indicator	Draft Target	Baseline (if known)
Community greenhouse gas emissions (tCO2e)	By 2030 reduce to 50% 55% below 2010	465,000 tCO2e (2010)	
	By 2050 reduce to 94% 97% below 2010		

Land use and land health: so our lands and waters are healthy and cared for / managed sustainably

Element	Draft Indicator	Draft Target	Baseline (if known)
Area of Lands Dedicated for Natural Area Protection (PAC-Zoning)	General increase	2,182 ha	
	Specific target TBD		

2021 DRAFT INDICATORS AND TARGETS

DRAFT INDICATORS & TARGETS – SOCIAL FOUNDATIONS

A HEALTHY NANAIMO:
COMMUNITY WELLBEING & LIVABILITY

so everyone has access to healthy, safe, and affordable food and housing

Element	Draft Indicator	Draft Target	Baseline (if known)
Chronic / Episodic Homelessness	Point-in-time count of people experiencing homelessness	Zero	433 (2020)
Rental Housing Affordability	Average rent of a 2-Bedroom Apartment	TBD	\$1263 (2020)
Vacancy Rate	Percent of vacancies in rental accommodation	3%-5%	7% (2020)
Mix of Housing Types	Proportion of single-family, ground-oriented, and apartment housing types	TBD	• 60% single-family • 18% ground-oriented • 22% apartment (2020)
Food Security	TBD	TBD	TBD

AN ENABLED NANAIMO:
ECONOMIC PROSPERITY & RESILIENCY

so everyone has opportunity to find good employment and businesses and institutions can thrive

Element	Draft Indicator	Draft Target	Baseline (if known)
Workforce Population	Percent of population that are of age likely to be in the workforce (15-64)	• 67% of total population	63% (2020)
Non-Residential Building Permits	Value of commercial and public building permits issued	• General increase • Specific target TBD	\$37.5 million (2020)
Ample & Diverse Business Opportunities	Number of total businesses and businesses with employees	• General increase • Specific target TBD	6,289 businesses with 1+ employees (2020)
Economic Success & Competitiveness	Economic Structure Index	TBD	TBD



A CONNECTED NANAIMO:
EQUITABLE ACCESS & MOBILITY

so everyone has safe, affordable, and sustainable options to move around and to access their daily needs

Element	Draft Indicator	Draft Target	Baseline (if known)
Transportation by Mode	Trips made by different modes of transportation	Modal split by 2041: • 2% walking • 4% cycling • 4% transit • 78% vehicle	2016 Modal split: • 6% walking • 2% cycling • 4% transit • 88% vehicle
Distance Driven	Average distance driven per person per day	10 km / day / person (2041)	14 km / day / person (2019)
Access to Daily Needs	Number of households within walking distance to employment hubs, essential services, schools, transit, recreation services, parks, and healthcare	TBD	TBD
Growth in Town Centres and Corridors	Proportion of growth occurring in designated growth areas - urban nodes and corridors	TBD	TBD
Traffic Injury Rate	Number of reported crashes in the City	• Vision Zero	TBD

AN EMPOWERED NANAIMO:
DIVERSITY, CULTURE, RECONCILIATION & SOCIAL INTEGRITY

so everyone can thrive and have opportunities to connect and participate in a way that fulfills them

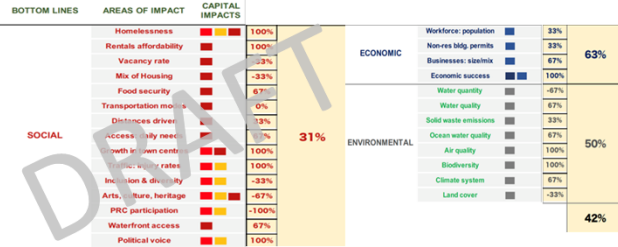
Element	Draft Indicator	Draft Target	Baseline (if known)
Inclusion & Diversity	TBD	TBD	TBD
Investment in Arts, Culture and Heritage	Culture being invested into arts, culture, and heritage	• General increase • Specific target TBD	TBD
Participation in PRC Programs and Services	Number of people participating in PRC programs and services	• General increase • Specific target TBD	TBD
Public Waterfront Access	Length of waterfront with public access and number of publicly accessible waterfront features	• Increase	TBD
Political Voice	TBD	TBD	TBD

MultiCapital Scorecard™

The MultiCapital Scorecard: Mockup Configured for City of Nanaimo (June 20, 2022 - with sample scores)

Vital capitals:

- Natural
- Internal Economic-Financial
- Constructed
- Internal Economic-Nonfinancial
- Human
- External Economic-Financial
- Social & Relationship
- External Economic-Nonfinancial



A performance measurement methodology to help an organization:

- Move beyond incremental progress
- Develop context-based sustainability performance indicators
- Connect actions with goals in a meaningful way

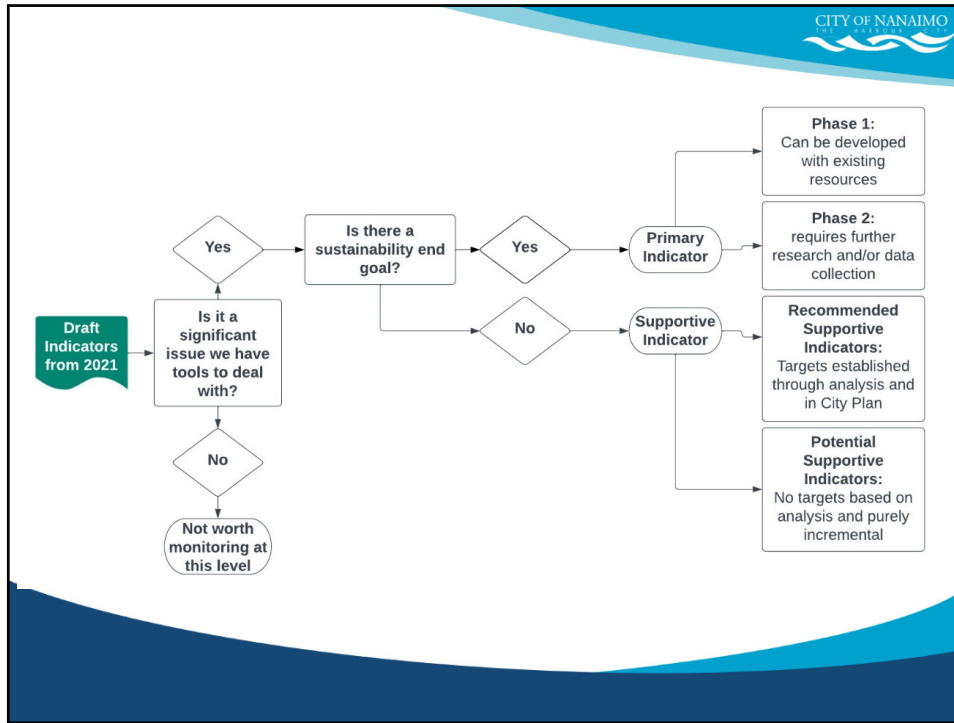
Step 1: Selection Criteria

1. Significance

Is this a significant and relevant issue to our community that we have tools to deal with?

2. End goal

Is there a science- or ethics-based sustainability end goal in this area of impact relating to the core values of the framework?



CITY OF NANAIMO
THE QUALITY CONNECTION

Primary Indicators

	Phase 1	Phase 2		Phase 1	Phase 2
Water infrastructure capacity	X		Vacancy rate	X	
Waste	X		Food security		X
Waterway health	X		Workforce population	X	
Ocean health	X		Growth in town centres and corridors	X	
Biodiversity		X	Traffic related fatalities	X	
Climate change	X		Inclusion and diversity		X
Chronic/Episodic homelessness	X		Participation in PRC services and programs (no-barrier)		X
Housing affordability	X		Political voice		X

Supportive Indicators

	Recommended	Potential
Land use and land health		X
Mix of housing types	X	
Non-residential building permit		X
Ample and diverse business opportunities		X
Economic success and competitiveness		X
Transportation by Mode	X	
Distance driven	X	
Access to daily needs		X
Investment in arts, culture and heritage		X
Participation in PRC services and programs (general population)		X
Public waterfront access		X

Step 2: Indicator Assessment

1. Is the indicator a sustainability measure of performance, not just an incremental one?
2. What is the threshold of the quantity of the resources or capitals involved that must be maintained in order to ensure the well-being of the community?

Example 1: Water infrastructure capacity

Water consumption by residents



Watershed reservoir capacity

(Incremental)

(Sustainability performance measure)

Sustainability threshold:

At least 30% of water reservoir capacity should be maintained at all times

Example 2: Housing affordability

Average rent of a 2-bedroom apartment



Percentage of income spent on housing costs

(Incremental)

(Sustainability performance measure)

Sustainability threshold:

No resident in Nanaimo should be required to spend more than 30% of their household income spent on housing costs (rent or mortgage payments and strata fees)

Step 3: Metric Development

Actual Impact (what we are measuring)

A Sustainability End Goal (what we ultimately want to maintain/achieve)

Example 1: Water infrastructure capacity

The sum of watershed reservoir capacity value from 30 days of the year that have the lowest capacity

30 (i.e. all 30 days are above 50% watershed reservoir capacity)

Look up table	
Watershed Reservoir Capacity	Value
0-30%	0
31-35%	0.2
36-40%	0.4
41-45%	0.6
46-50%	0.8
51%-100%	1

Where score of 1 = sustainable performance, score of 0 = unsustainable, between 0-1 = concern

Example 2: Housing affordability

Proportion of housed population with housing costs that do not exceed 30% of their income

100% housed population with housing costs that do not exceed 30% of their income

Where score of 1 = sustainable performance, score of <1 = less than ideal

Proposed Next Steps

City Plan IAP and Monitoring Review		Proposed Date
C1 & C2	A Green Nanaimo actions A Connected Nanaimo actions	GPC – March 13
C3	A Healthy Nanaimo actions An Empowered Nanaimo actions	GPC – April 24
C4, C5, D, E	A Prosperous Nanaimo actions, City Structure and Taking Action AND draft Monitoring Strategy Introduction	GPC – May 8
	Completed draft Integrated Action Plan and Monitoring Strategy	GPC – May 29

* Extra meetings can be scheduled if needed to ensure we have a final draft by May