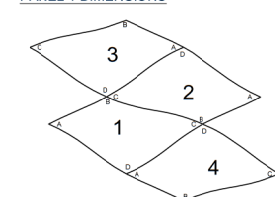
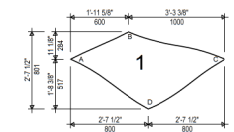
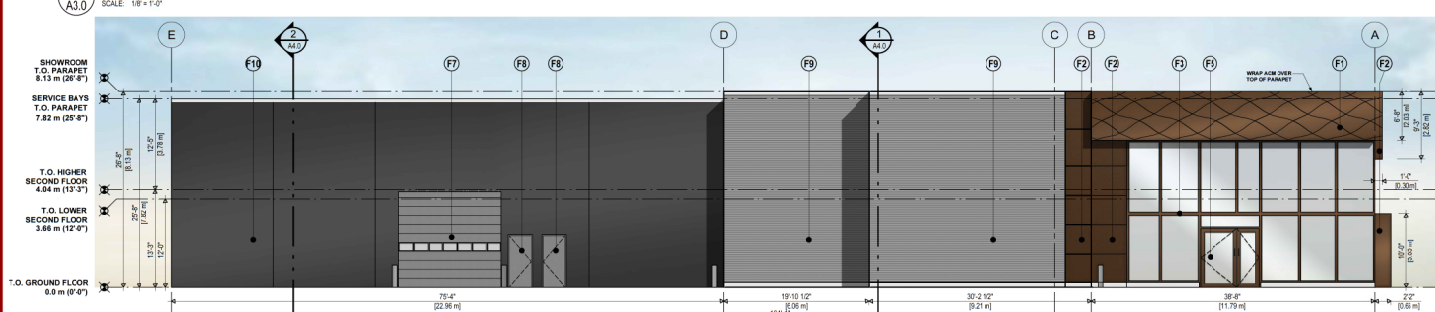
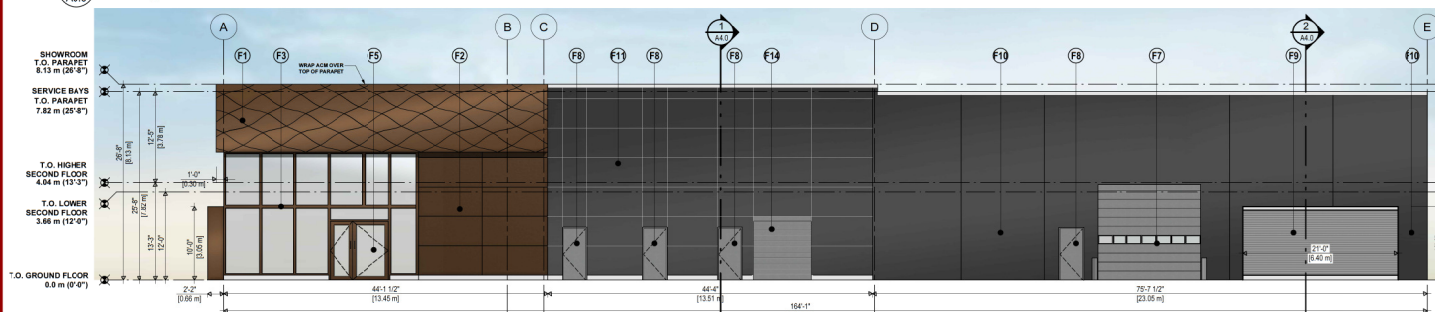
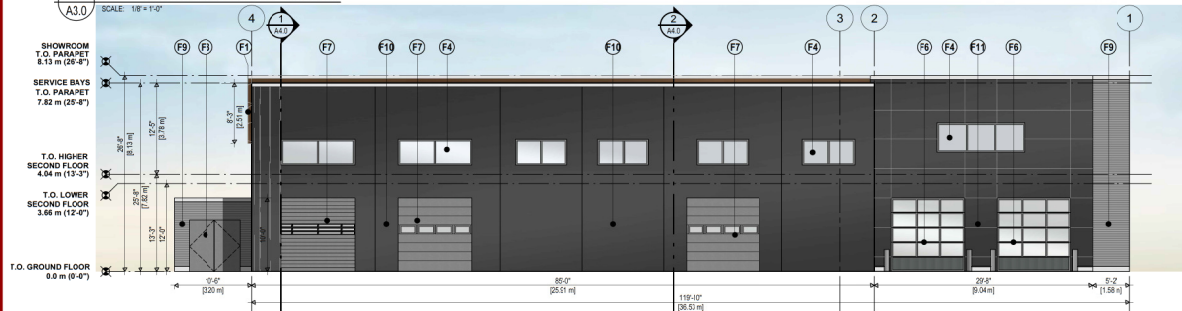
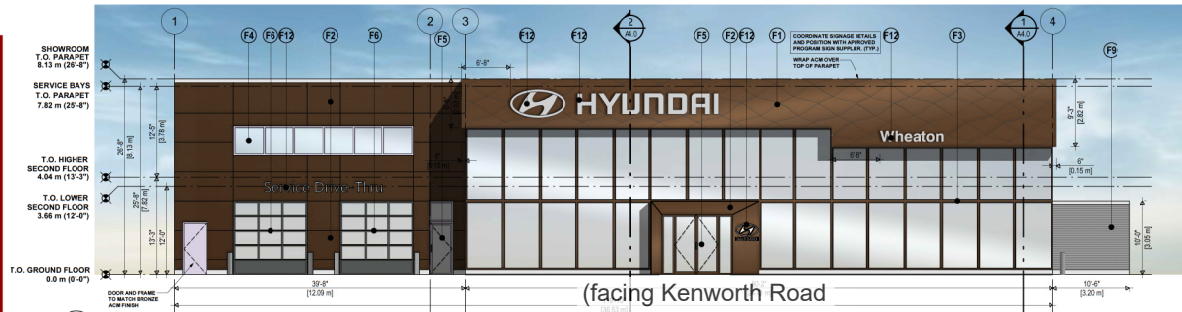


ATTACHMENT E BUILDING ELEVATIONS AND DETAILS



PANEL 2 = PANEL 1 ROTATED ±180 DEGREES
PANEL 3 = PANEL 1 MIRRORRED ALONG VERTICAL AXIS
PANEL 4 = PANEL 1 MIRRORRED ALONG VERTICAL AXIS AND ROTATED 180 DEGREES

EXTERIOR FINISHES & NOTES:			
Code	Description	Specification	Contact
F1	3-WAVE PATTERN ACM-BRONZE	Manufacturer: Solotex Ltd. Description: Aluminum Composite Materials (ACM) panels with Brushed Bronze Hairline Finish. 3-Wave Pattern. Colour: Bronze Finish: Matte Brushed	Solotex Ltd.
F2	LINEAR ACM-BRONZE	Manufacturer: Solotex Ltd. Description: Aluminum Composite Materials (ACM) panels with Brushed Bronze Hairline Finish. 3-Wave Pattern. Colour: Bronze Finish: Matte Brushed	Solotex Ltd.
F3	SHOWROOM CURTAIN WALL	Manufacturer: Kawneer Description: Capless vertical mullions with capped horizontal frames. Material: Aluminum (Thermally Broken) and Clear Glass (Low E). Colour: Bronze No. 28 Finish: Anodized Finish AA-M1222244 Class 1	Kawneer
F4	CLEAR ANODIZED WINDOW FRAMES	Manufacturer: Kawneer Description: Capless vertical mullions with capped horizontal frames. Material: Aluminum (Thermally Broken) and Clear Glass (Low E). Colour: Clear Finish: Anodized Finish NA	Kawneer
F5	GLAZED DOOR AND TRANSOM	Manufacturer: Kawneer Description: Capless vertical mullions with capped horizontal frames. Material: Aluminum (Thermally Broken) and Clear Glass (Low E). Colour: Bronze No. 28 Finish: Anodized Finish AA-M1222244 Class 1	Kawneer
F6	FULLY GLAZED OVERHEAD DOORS (CLEAR ANODIZED)	Manufacturer: TBD Description: Fully glazed overhead doors. Material: Aluminum and Glass Colour: Clear Finish: Anodized Finish NA	TBD
F7	OVERHEAD DOORS (WHITE)	Manufacturer: TBD Description: Insulated overhead service bay doors. Material: Aluminum and Glass Colour: White Finish: Per Manufacturer Standard	TBD
F8	INSULATED METAL DOORS, PAINTED DARK GREY	Manufacturer: Dulux Paint Description: GDSI Standard Dark Grey Paint. Material: Dulux Paint / Dulux Paint Ultra Grey Teflon Colour: Exterior Grade Finish: Dulux Ultra Deep Base 1 gallon formula BX-718, CX-114, FX-20, 30-20-20	Dulux
F9	7/8" HORIZONTAL CORRUGATED METAL SIDING CHARCOAL	Manufacturer: Viewast Description: Horizontal Corrugated Metal Siding. Material: Metal Siding Weather/L Series 7/8" EPS W/Later (Dulux Paint) Grey Teflon Colour: Exterior Grade Finish: Dulux Ultra Deep Base 1 gallon formula BX-718, CX-114, FX-20, 30-20-20	Viewast
F10	TILT-UP PANEL	Manufacturer: Dryvit Description: Tilt-up Concrete Panels painted to Match F11 B13 Grey. Material: Dryvit Colour: Exterior Insulated Finishing System Finish: EPS W/Later (Dulux Paint) Grey Teflon BX-718, CX-114, FX-20, 30-20-20	Dryvit
F11	B13S CHARCOAL GRAY	Manufacturer: Dryvit Description: Exterior Insulated Finishing System. Material: Dryvit Colour: Exterior Grade Finish: Dulux Ultra Deep Base 1 gallon formula BX-718, CX-114, FX-20, 30-20-20	Dryvit
F12	SIGNAGE	Manufacturer: TBD Description: Signage. Material: Aluminum Colour: White Finish: Per Manufacturer Standard	TBD
F13	METAL GATE / DOORS	Manufacturer: TBD Description: Insulated solid overhead door. Material: Aluminum Colour: White Finish: Per Manufacturer Standard	TBD
F14	OVERHEAD DOOR	Manufacturer: TBD Description: Insulated solid overhead door. Material: Aluminum Colour: White Finish: Per Manufacturer Standard	TBD

Copyright Reserved. These drawings are at all times the property of the Architect. Reproduction in whole or in part without written consent of the Architect is prohibited.



Issue / Revision	Date
14 REVISIONS TO DP	28 JULY '22
13 REVISIONS TO DP	22 JUNE '22
12 PRE-TENDER CO-ORD	04 APR '22
11 TENDER CO-ORD	07 MAR '22
10 TENDER CO-ORD	09 FEB '22
9 BUILDING PERMIT	20 DEC '21
8 IP CO-ORD	13 DEC '21
7 IP CO-ORD	04 NOV '21
6 DEVELOPMENT PERMIT	02 NOV '21
No. Issued / Revisions	Date

alan lowe architect inc.
118 - 21 Erie St.
Victoria, British Columbia
1 250.360.3888



project title: **HYUNDAI DEALERSHIP NANAIMO**
2355 KENWORTH ROAD
NANAIMO, BC
RENDERED ELEVATIONS

project no.: 21.699
date: JULY 28, 2022 scale: AS NOTED
checked by: LOWE drawn by: NA
sheet no.:

A3.1

RECEIVED
DP1251
2022-AUG-03
Current Planning