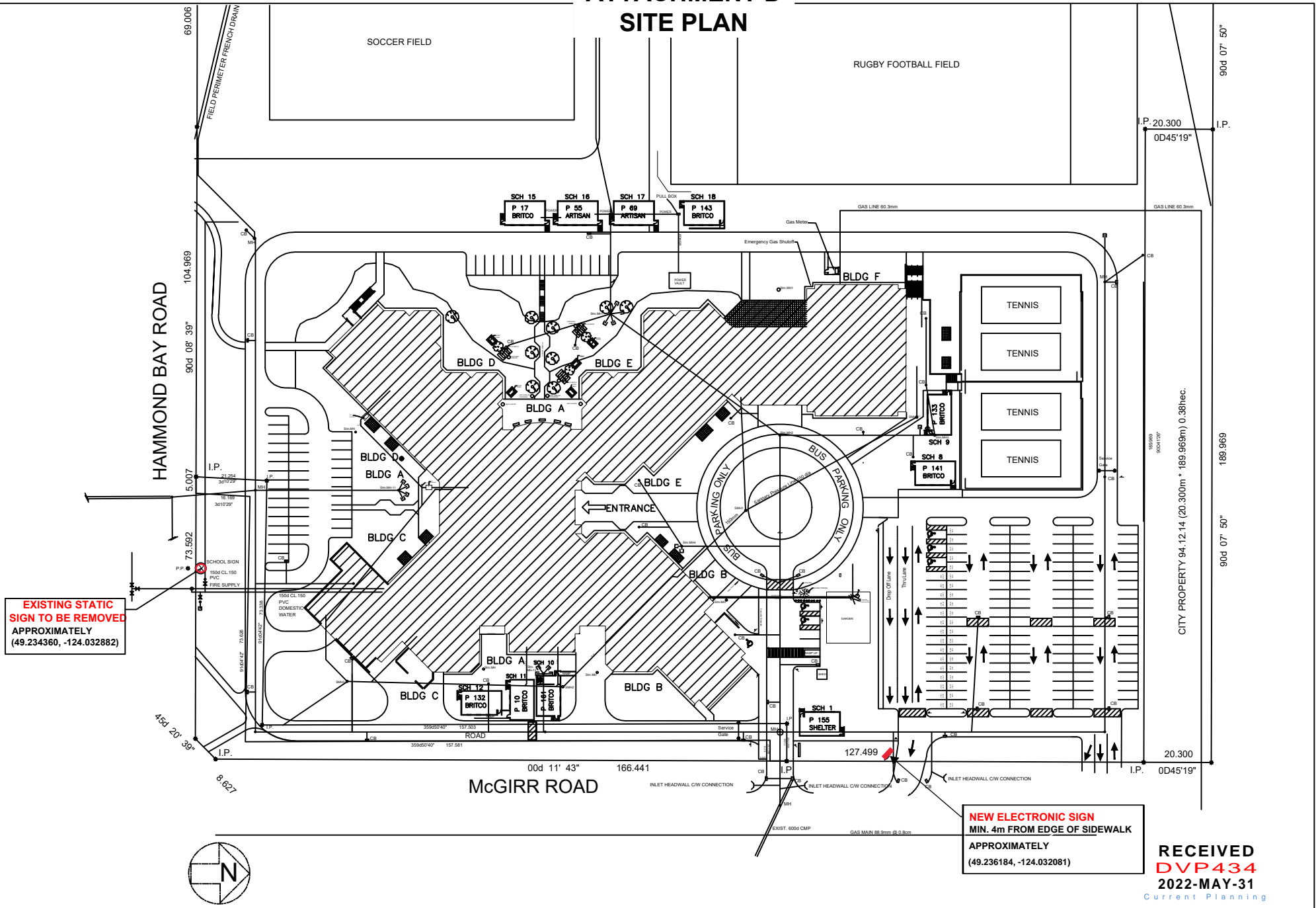


# ATTACHMENT D SITE PLAN



**EXISTING STATIC SIGN TO BE REMOVED**  
APPROXIMATELY  
(49.234360, -124.032882)

**NEW ELECTRONIC SIGN**  
MIN. 4m FROM EDGE OF SIDEWALK  
APPROXIMATELY  
(49.236184, -124.032081)

**RECEIVED**  
**DVP434**  
**2022-MAY-31**  
Current Planning



SCHOOL:	ADDRESS:	DRAWING TITLE:	DATE:	SHEET SIZE:	DESIGN BY:
DOVER BAY SECONDARY	6135 MCGIRR ROAD NANAIMO, BC V9V 1M1	SCHOOL SIGN	-	8.5 x 11	-
			SCALE:	SHEET #:	APPROVED BY:
			1:1500	1	-